



Adam Tas Corridor Energy

1 8t Optical Module Switch





1 8t Optical Module Switch

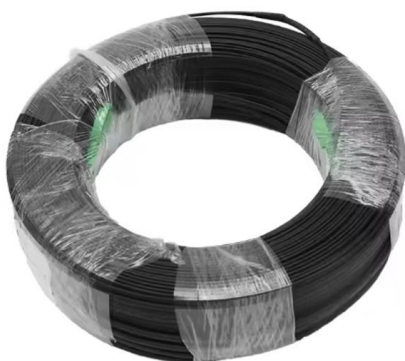


Optical Network International

Optical Network International OPNETI 1x8 MEMS switch is based on MEMS technology . The component makes an optical connection between an optical port and either one of 8 input or output

1x8T Optical Switch

Features Wide Wavelength Range Low Crosstalk High Stability, High Reliability Epoxy-free on Optical Path



PM Fiber MEMS optical switch Module -1x2, 1x4, 1x8,

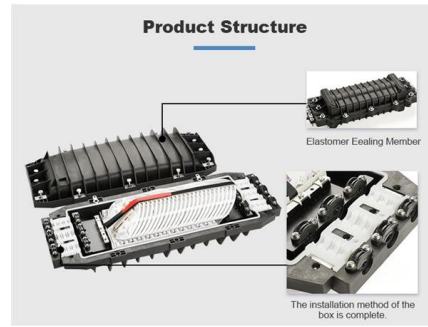
A fast switching, non Latching Mems module available in up to 16 port options.

Technology from 400G to 800G to 1.6T Transceivers

This paper describes the technical route of optical communication from 400G to 800G to



1.6T optical modules and compares pluggable and CPO.



Length:14.5mm
Small-end inner diameter:2.0mm
Large-end inner diameter:3.5mm
Outer diameter:5.2mm



Optical switch modules

POLATIS optical switch modules by HUBER+SUHNER, feature a non-blocking all-optical matrix, port counts from 16-48xCC, and "any-to-any" port connectivity.

Ecosia

Ecosia uses 100% of its profits for the planet and produces enough renewable energy to power all searches twice over.



How to View Optical Module Status on a Cisco Switch

In this Cisco Tech Talk, learn how to view the optical module status on a Cisco switch using the Command Line Interface (CLI). This video demonstrates





400G, 800G, and Terabit Pluggable Optics

Firmware updates onsite without unplugging the optics from the Switch:

- o Optics complexity
- o Enhance optics performance by adding new firmware features
- o Maintain firmware uniformity across install



Rack Mounted Fiber Optic Switch, Rackmount 1xN Optical Switch

GLSUN Rack Mount Optical Switch series offers unparalleled convenience and control for optical path switching. Equipped with an LCD display panel and visual display, our rack-mounted 1xN ($16 \leq N \leq 64$)

800G/1.6T Optical Transceiver and Co-Package Module

In conclusion, the 800G optics modules are currently under development and target dual 400G and octal 100G breakout applications. The



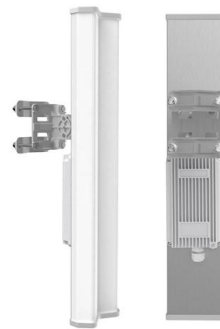
Optical Switch Module

Dimension offers a series of high-performance OSW optical switch modules for automation testing systems.



Fiber-optic Prism Optical Switches

These component-style fiber-optic prism optical switches utilize moving prisms between fixed collimator pairs, which allows bi-directional switch operation



Multi-channel fibre optic switch module 1x8T for integrating optical

Multi-channel optical switch module 1x8T Fibre Optic Switch - Introduction SUN-FSW-1x8T Optical Switch is an ideal component for OADM,OXC,system monitoring and protection. With compact

800G Client Optics in the Data Center

When hyperscale data center operators start deploying a new generation of client optics, they immediately require massive volumes of optical modules to build out switching fabric and router





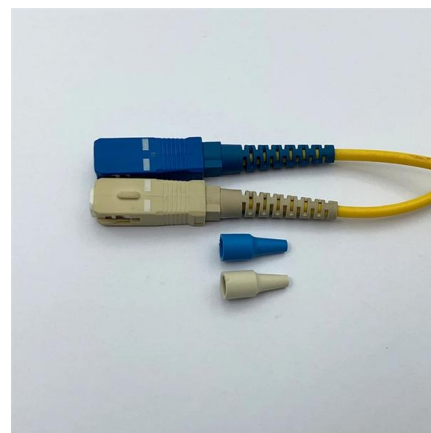
XPO: Redefining Pluggable Optics for AI Networking

Diagnosing and replacing a failed module within a fabric containing 50,000+ optical links presents a major operational challenge, often triggering cascading effects on job scheduling and leading to



Serenity's High Conviction Bet: ShunSin (<https://t /YjBgU2NAZs>)

On top of that, fresh rumors of accelerated NVDA CPO timelines and Foxconn increasing its full-optical CPO switch orders to 50,000 units. Once you understand ShunSin's critical role in the



Optical Switch Singlemode 1x8 · 1x12 · 1x16 · 2x4 · 2x8

Optical Switch Singlemode 1x8 · 1x12 · 1x16 · 2x4 · 2x8 The fiber optical switches are based on a proprietary micro-mechanical/ micro optical design. This guarantees superior properties, wide



Replacing an Optical Module

Before replacing an optical module, determine in which cabinet and chassis the optical module is installed, find the optical module in the chassis, and attach a label to the optical module.



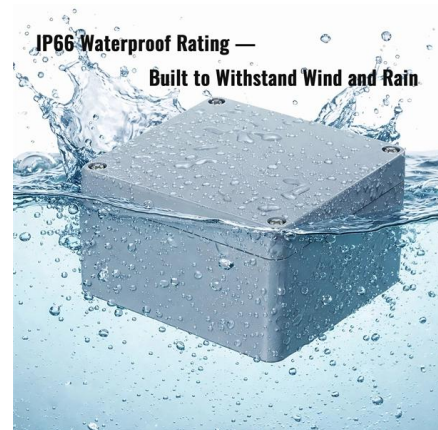
Matrix optical switch

The Matrix MXN fiber optical switches allow simultaneous connection between M inputs and N output fibers, in a fully non-blocking, all-optical, cross-connect



Optical Switches

1x8, 1x16 Fiber Optical Switches This 1x8 and 1x16 optical switches are ideal modules for applications requiring high optical switchi



HP N2282A (1 x 8 Optical Switch Module) , ArtisanTG(TM)

N2282A 1 x 8 Optical Switch Module from HP , Buy Today from Artisan. 30-Day Return Guarantee. 1-Year Warranty. Fast Shipping. Downloadable Technical





XPO-LPO Optical Transceiver , Optical Interconnect

Amphenol XPO-LPO optical transceiver delivers next-generation 12.8T Ethernet connectivity with 224 Gb/s per lane. Leveraging LPO technology,



Multi-channel fibre optic switch module 1x8T for integrating optical

SUN-FSW-1x8T Optical Switch is an ideal component for OADM, OXC, system monitoring and protection. With compact package, it can be easy to integrate into a high density optical

XG-SFP-LR-SM1310 10GBASE-LR SFP+ 1310-nm 10-km DOM

XG-SFP-LR-SM1310 10GBASE-LR SFP+ 1310-nm 10-km DOM Duplex LC SMF Optical Transceiver Module Applicable to data center and campus networks, enabling cost-effective, efficient, and high

Ordering information

NO.	1	2	3	4	5	6
Model	SFP12041	SFP12042	SFP16044	SFP16045	SFP12042	SFP12044
Product name	Patch Panel	Patch Panel	Patch Panel	Patch Panel	Patch Panel	Patch Panel
Illustration						
NO.	1	2	4	1	2	4
Maximum number of ports	144	288	576	144	288	576
Product line (including modules and accessories)	402-07117114 (mm)	402-07117188 (mm)	402-07117117 (mm)	402-07117114 (mm)	402-07117188 (mm)	402-07117117 (mm)
Standard color code	RAL9005	RAL9005	RAL9005	RAL9005	RAL9005	RAL9005

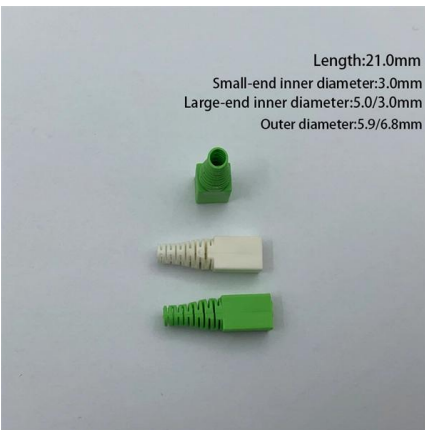
Cisco 10GBASE SFP+ Modules Data Sheet

The Cisco 10GBASE SFP+ modules give you a wide variety of 10 Gigabit Ethernet connectivity options for data center, enterprise wiring closet, and



Mini 1x8 T type Optical Switch

GEZHI Photonics' Mini 1x8 T type Mechanical Fiber Optic Switch (1x8 Optical Switch) support all wavelength at 1260nm~1650nm or 850nm Multimode



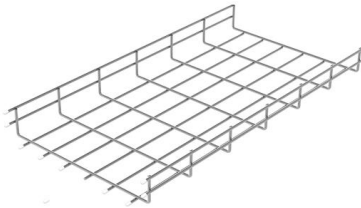
1xN MEMS Optical Switch Modul

1xN MEMS Optical Switch Module Features Compact Structure Fast Switching Time Low Insertion Loss High Reliability

MEMS 1X8 Optical Switch

MEMS 1X8 Fiber Optical Switch is a compact, single mode or multimode fiber optical switch configurable for port counts up to 1x64 utilizes the proprietary microelectromechanical system (MEMS)





850nm 1X8 Multimode Optical Switch Module MM/SM

850nm 1X8 Multimode Optical Switch Module MM/SM Fiber Switch The 1x8 multi-mode optical switch module is a functional device with optical path switching

1X8 Optical Switch

1X8 Fiber Optical Switches Modules is a kind of functional component, with the ability of switching optical route. The 1X8 Opto-Mechanical Optical Switches consists of 1 input and 8 output fiber ports

Ordering information

NO.	1	2	3	4	5	6
Model	SP12M1	SP12M2	SP12M3	SP12M4	SP12M5	SP12M6
Product name	Patch Panel	Patch Panel	Patch Panel	Patch Panel	Patch Panel	Patch Panel
Illustration						
NO.	1	2	4	1	2	4
Maximum number of cores	144	288	576	144	288	576
Product size (including module and assembly)	482.0(21.7174) mm	482.0(21.7181) mm	482.0(21.7177) mm	482.0(21.7174) mm	482.0(21.7181) mm	482.0(21.7177) mm
Standard color code	BA10005	BA10005	BA10005	BA10005	BA10005	BA10005



Serenity's High Conviction Bet: ShunSin ([https://t /YjBgU2NAZs](https://t/YjBgU2NAZs))

That speculation alone pushed the stock to around NT\$500. On top of that, fresh rumors of accelerated NVDA CPO timelines and Foxconn increasing its full-optical CPO switch orders to

Contact Us

For datasheets, pricing, or custom telecom energy solutions, please visit: <https://www.koskolong.co.za>