



**Adam Tas Corridor Energy**

# **10 Gigabit Multimode Fiber Optic Module Functional Diagram**





## 10 Gigabit Multimode Fiber Optic Module Functional Diagram

---



### Dahuasecurity

Hier sollte eine Beschreibung angezeigt werden, diese Seite lässt dies jedoch nicht zu.

### Fiber Modules

Featuring low power consumption, these fiber modules are ideal for enterprise LAN networks and other optical links. Please select the fiber cable according to the module type. The multi-mode module



### Cisco SFP Modules for Gigabit Ethernet Applications

This data sheet describes the benefits, specifications, and ordering information for the Cisco SFP Modules for Gigabit Ethernet Applications.

### Introduction of 10G SFP+ Optical Modules

10G SFP+ optical module is a popular category widely used in data centers, enterprise networks,



edge devices, and CPEs. Function: They're



### **SFP-1G-SX Explained: The Essential Guide to 1G**

The SFP-1G-SX module is a proven, reliable, and cost-effective solution for 1 Gigabit short-range fiber optic connectivity. Understanding its

### **Cisco SFP-10G-LRM Datasheet**

The Cisco 10GBASE SFP+ modules give you a wide variety of 10 Gigabit Ethernet connectivity options for data center, enterprise wiring closet, and service provider transport applications.



### **Fiber-optic communication**

Modern fiber-optic communication systems generally include optical transmitters that convert electrical signals into optical signals, optical fiber cables to carry the



## **fiber optic router , Newegg**

StarTech Cisco GLC-SX-MMD Compatible SFP Module - 1000BASE-SX - 1GE Gigabit Ethernet SFP 1GbE Multimode Fiber MMF Optic Transceiver Standards: IEEE 802.3z 1000BASE-SX



## **SFP+10G 1310nm 10Km LC Optical Module Guide**

The SFP+10G 1310nm 10Km LC optical module is a powerful and versatile solution for high-speed, long-distance data transmission. Understanding SFP+ optical

## **Demystifying 10G SFP+ Transceiver Modules**

Types of 10G SFP+ Transceiver Modules The diverse range of 10G SFP+ transceiver modules caters to a wide spectrum of applications and network environments. Here's an overview of



## **Cisco 10GBASE SFP+ Modules Data Sheet**

The Cisco® 10GBASE SFP+ modules (Figure 1) give you a wide variety of 10 Gigabit Ethernet connectivity options for data center, enterprise wiring closet, and service provider transport applications.



## Multimode SFP+: 10GBASE-SR Specs, Fiber Types and

Learn how multimode SFP+ (10GBASE-SR) transceivers work, including fiber types, transmission distance, specifications, and common data



## 10 Gigabit Fiber SFP+ Optical Transceiver Module

The Intellinet Network Solutions 10 Gigabit Fiber SFP+ Optical Transceiver Module (model 507479) is fully hot-pluggable, and that allows you to install the module without rebooting your network switch

## SFP+ Transceiver

This S-class fiber transceiver module is better suited for enterprise network runs of shorter distances than other standard modules. The N286-10G-SR-G supports Ethernet protocol and operates within



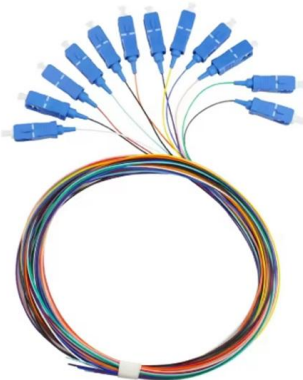


## 10 Gb/s Ethernet over multimode fiber

One solution for transmitting data at 10 Gb/s over multimode fiber is the LX4 optical interface, defined in the IEEE's original 10 Gb Ethernet standard. In this approach, four DFB laser diodes operate at

## What is an Optical Module?

Explore the world of optical modules, essential components in optical fiber communication. Learn about the different types of optical modules, their



## Optic Modules Datasheet

Data Sheet datasheet is intended to guide the user through the various options available when choosing an optic module for a given platform depending on the architecture.

## Fiber To Copper Media Converters (Updated Daily) , Adorama

Fiber To Copper Media Converters offer a reliable solution for seamlessly connecting fiber optic networks to traditional copper-based systems. Essential for expanding network flexibility, these



## 2 Pack of SFP Transceiver Multimode Gigabit Mini-GBIC Module

It can quickly find out the fault location of the optical fiber link with its DDM function, Easy to Install, Plug and Play 1 Meter OM3 LC to LC Multimode Duplex Fiber Patch Cable are widely used for



## Gigabit Ethernet

Gigabit Ethernet was the next iteration, increasing the speed to 1000 Mbit/s. The initial standard for Gigabit Ethernet was produced by the IEEE in June 1998 as



## Optical Fiber and 10 Gigabit Ethernet

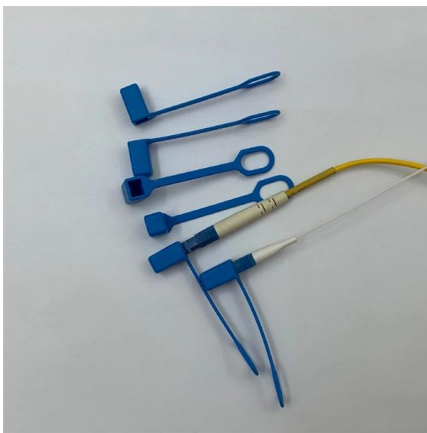
As 10 Gigabit Ethernet (10GbE) is introduced into networks the physical limitations and properties of optical fiber introduce new challenges for a network designer.





## 10G SFP+ Cable and Transceiver Modules Data Sheet

The SFP+-10G modules are our latest generation of 10G transceiver modules solution based on a SFP+ form factor. (See Figure 1).



## UniFi 10G Multi-Mode Optical Module

SFP+ transceiver that supports 10G connections up to 300 m using multi-mode fiber with a duplex LC UPC connector.

## H!Fiber 10G Multimode SFP+ LC Module, 10GBase-SR Fiber

About this item 10GBase-SR SFP+: 10 Gigabit Ethernet Multimode SFP+ Module, 10 Gb/s, 850nm wavelength, Duplex Dual LC, MMF, operates on multi-mode (OM3/OM4) LC/UPC fiber cable spans of up to 300m (984 Ft) in length; 2 Pack Wide Compatible: Perfect for Cisco SFP-10G-SR, Meraki MA-SFP-10GB-SR,



## 10 Gigabit Fiber SFP+ Optical Transceiver Module

10 Gigabit Connectivity Whether you need a fast connection to your 10 GbE equipped server or NAS device, or if you simply want to connect two Gigabit



## What Is 10GBASE-LR? SMF 1310nm 10km SFP+ Explained

10GBASE-LR is a 10-gigabit Ethernet optical standard that operates at 1310 nm over single-mode fiber (SMF), supporting link distances of up to 10 km. It is typically implemented using SFP+ transceivers



## Fiber Optic Industry Acronyms

This comprehensive reference of standardized fiber optic acronyms is a resource for understanding technical shorthand across networking and telecommunications.

## SFP Module Introduction: SFP meaning, Fiber SFP and

The most common multimode SFP transceiver module is 1000BASE-SX SFP, which allows a maximum distance of 550m at 1.25 Gbit/s speed.

- o Single-mode SFP



## **What Is an SFP Module? -- Complete Guide to SFP, SFP+ & SFP28**

An SFP (Small Form-factor Pluggable) is a compact, hot-pluggable transceiver module that allows networking equipment -- including switches, routers, servers, and media converters -- to support

## **Contact Us**

---

For datasheets, pricing, or custom telecom energy solutions, please visit:  
<https://www.koskolong.co.za>