



Adam Tas Corridor Energy

10 Gigabit Single-Mode Fiber Optic Parameters





Overview

In SMF light follows a single path through the fiber while in MMF it takes multiple paths resulting in differential mode delay (DMD). The Cisco® 10GBASE SFP+ modules (Figure 1) give you a wide variety of 10 Gigabit Ethernet connectivity options for data center, enterprise wiring closet, and service provider transport applications. The implementation of a cabling design, compatible with LED and laser-based Ethernet network devices, which will allow the integration. The SFP-10G-LR is a hot-pluggable, industry-standard small form-factor pluggable module designed for 10 Gigabit per second data rates. 3ae standard, providing a bridgeable distance of up to 10km for 10GbE-LAN (10GBASE-LR), 10GbE-WAN. 10GBASE-LX4 supports four long wavelength WDM serial transmission over duplex (2-fiber) single-mode optical fiber cabling.



10 Gigabit Single-Mode Fiber Optic Parameters

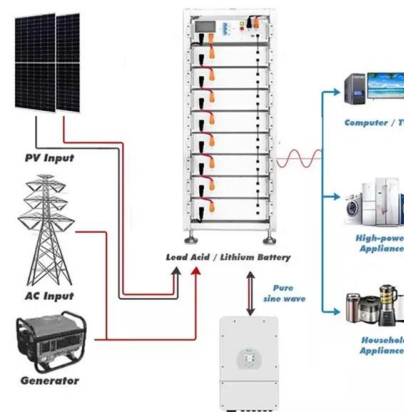


SC/UPC Single Mode Simplex Fiber Optic Patch Cord , COBTEL

This sc upc single mode fiber patch cord carries a single 9/125 μm OS2 fiber core through a low-smoke zero-halogen (LSZH) outer jacket. The result is a fiber optic cable patch cord that performs flawlessly

10 Gigabit Ethernet Fiber Design Considerations

This paper has introduced some basic fiber related concepts and outlined some of the key points to understand and consider when designing a 10 Gigabit Ethernet network.



Gigabit Ethernet

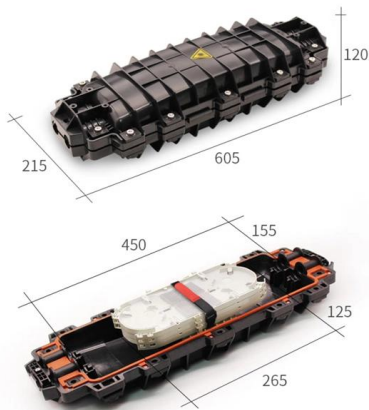
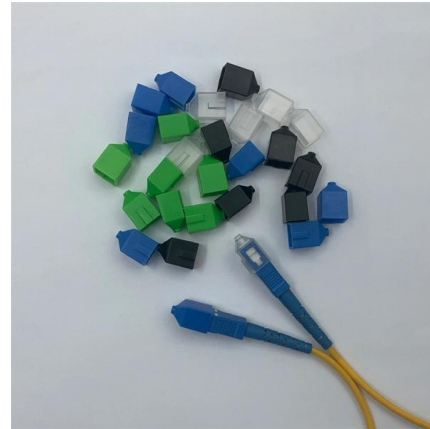
It is practically identical to 1000BASE-LX, but achieves longer distances up to 10 km over a pair of single-mode fiber due to higher quality optics. Before it was

10 Gigabit Ethernet

Overview
Optical fiber
Physical layer
modules
Copper
WAN PHY (10GBASE-W)



There are two basic types of optical fiber used for 10 Gigabit Ethernet: single-mode (SMF) and multi-mode (MMF). In SMF light follows a single path through the fiber while in MMF it takes multiple paths resulting in differential mode delay (DMD). SMF is used for long-distance communication and MMF is used for distances of less than 300 m. SMF has a narrower core (8.3 mm) which requires a more precise termination and c

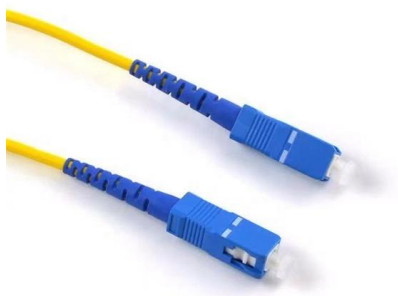
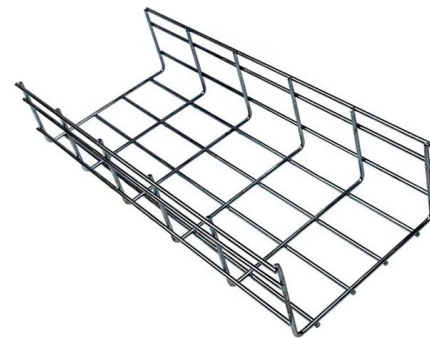


Installation and Maintenance Guide for Gigabit Optical Modules and 10

Storage Attention: Optical modules not in use for long periods should be stored with dust caps in a dry, dust-free, and light-protected environment to prevent moisture, dust, sunlight, and

The Essential Guide to SFP-10G-LR Optical Transceivers

Understanding what is SFP-10G-LR, and its core specification, application and comparison with other 10G SFP+ optical transceivers



What Are the Key Parameters of Optical Modules

Understand the key parameters of optical modules, including transmission rate, distance, wavelength, and fiber compatibility, for better network



Fiber-optic communication

An optical fiber patching cabinet. The yellow cables are single-mode fibers; the orange and blue cables are multi-mode fibers: 62.5/125 mm OM1 and 50/125 mm

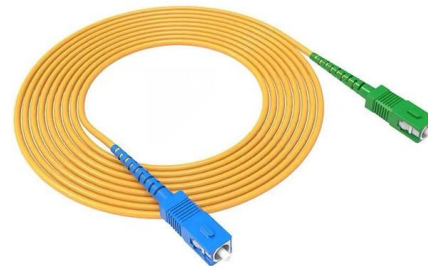


What is an Optical Module?

Explore the world of optical modules, essential components in optical fiber communication. Learn about the different types of optical modules, their

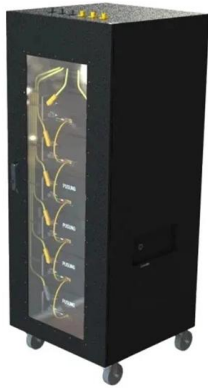
10G BiDi SFP+ Modules: A Guide to Single-Fiber 10G

Explore how 10G BiDi SFP+ modules enable high-speed, bidirectional data over a single fiber, cutting costs, saving fiber, and simplifying network deployment.



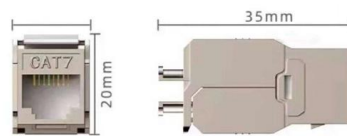
Arista SFP-10G-ER-Arista , 10G SFP+ Transceiver, Single-Mode,

The Arista SFP-10G-ER is a 10GBASE-ER SFP+ optical transceiver designed for extended-reach data transmission over single-mode fiber networks. Operating at 1550nm wavelength, this module delivers



Single-mode optical fiber

In fiber optics, a quadruply clad fiber is a single-mode optical fiber that has four claddings. Each cladding has a refractive index lower than that of the core.



Fiber Optic Cables vs. Ethernet Cables: What's the

Fiber optic cables and Ethernet cables are two of the most important data transfer cable standards there are, but with their use cases often crossing

Top Optical Modules for POTN Deployment: SFP, QSFP, and OSFP

Connector interface: LC duplex, MPO, or MTP, depending on whether the fiber is single-mode or multi-mode. Power and thermal envelope: The heat generated by high-speed optics affects



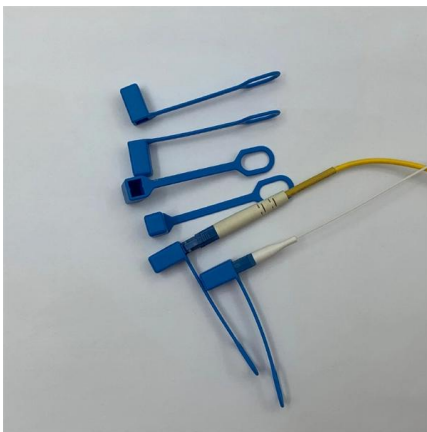
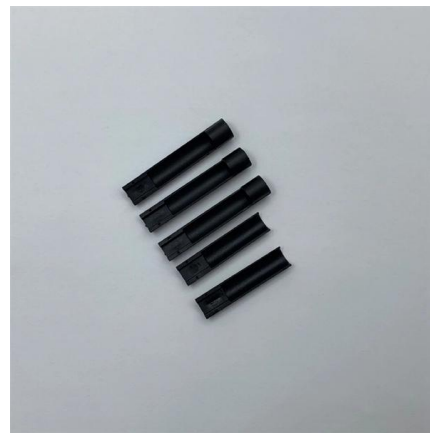


SFP-10G-LR Datasheet Overview

Cisco SFP-10G-LR module is the single-mode 10G fiber optical transceiver, the Cisco 10G Base-LR Module supports a link length of 10 kilometers on standard single-mode fiber (SMF, G.652) and SFP

SO-SFP-1G-10G-LR

The optical performance is in accordance with the IEEE 802.3ae standard, providing a bridgeable distance of up to 10km for 10GbE-LAN (10GBASE-LR), 10GbE-WAN (10GBASE-LW) and 1000BASE



What Is an SFP Module? (Comprehensive Guide Including Fiber Optic

Single-mode optical modules: Matched with single-mode fibers, with a core diameter of 9mm, excellent transmission performance, supporting long-distance transmission, used in scenarios such as

Arista QSFP-100G-LR4-Arista , 100G QSFP28 Transceiver, Single-Mode, 10

The Arista QSFP-100G-LR4 is a 100GBASE-LR4 QSFP28 optical transceiver designed for high-performance 100 Gigabit Ethernet applications. It supports link distances up to 10km over duplex



10GBASE-LX4 Application Overview

The TIA FOTC provides a comprehensive overview of 10GBASE-LX4 capabilities and single-mode optical fiber channel characteristics.



Amazon : Fiber To Ethernet Converter

A Pair of Gigabit Single Mode LC Fiber Media Converter, with 2 Pcs SFP LX Modules, 1.25G/s Fiber to Ethernet Converter, 1000Base-LX to 10/100/1000base-TX, SFP to RJ45, SMF, 1310nm, up to 20km



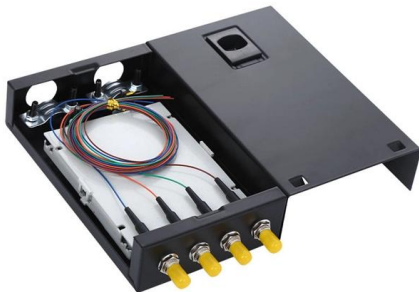
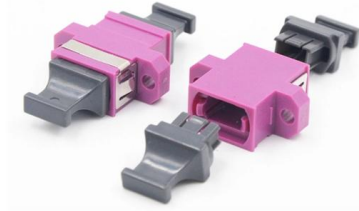
SFP Transceiver

Utilizing LC connectors and operating at a 1310nm wavelength, it enables high-speed data transmission over single-mode fiber for distances up to 10 kilometers. This module provides a reliable long-reach



Arista SFP-10G-LRL-Arista , 10G SFP+ Transceiver, Single-Mode,

The Arista SFP-10G-LRL is a 10GBASE-LRL SFP+ optical transceiver designed for short-reach single-mode fiber links up to 1 kilometer. Operating at 1310nm wavelength with duplex LC connectors, this



Optical Fiber and 10 Gigabit Ethernet

The current IEEE 802.3 standard for 10 Gigabit Ethernet cites ISO/IEC standard 11801 for optical fiber specification compliance, which in turn refers to IEC 60793-2 for detailed optical fiber parameter

Multi-mode optical fiber

Multi-mode optical fiber is a type of optical fiber mostly used for communication over short distances, such as within a building or on a campus. Multi-mode links can



Contact Us

For datasheets, pricing, or custom telecom energy solutions, please visit:
<https://www.koskolong.co.za>