



Adam Tas Corridor Energy

10G Optical Switch Configuration Scheme



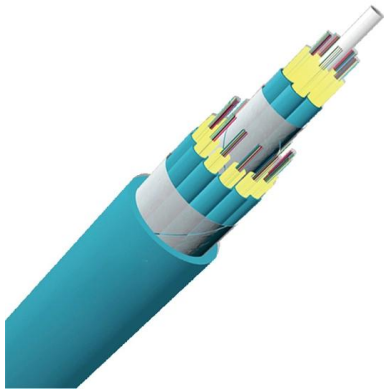


Overview

IP Address Configuration: Assign an IP address to the 10G SFP+ switch so you can manage it remotely. VLAN Setup: Create VLANS to segment network traffic and improve network security. Selecting the correct cabling or transceiver solution is critical for performance, cost, and scalability. ALL STATEMENTS, INFORMATION, AND RECOMMENDATIONS IN THIS MANUAL ARE BELIEVED TO BE ACCURATE BUT ARE PRESENTED WITHOUT WARRANTY OF ANY KIND, EXPRESS OR IMPLIED. The following switches support SFP-10G-T-X transceivers with adjacency limitations: Here's a table with direct links to the official Cisco hardware installation guides for the specified Nexus switch models that support SFP-10G-T-X transceivers: Note - Cisco Nexus FX3 series switches—such as the. A 10GBASE-SR SFP module, also called 10G SFP+ SR, is a 10 Gbps multimode optical transceiver using 850 nm VCSEL laser technology and duplex LC connectors, designed for short-reach fiber links over OM3 and OM4 multimode fiber, typically up to 300–400 meters.



10G Optical Switch Configuration Scheme



10 Gigabit Ethernet (10GbE) Standards: The Definitive

This is a complete guide to 10G Ethernet standards in 2022. In this in-depth guide we will cover: What is 10 Gigabit Ethernet (10GbE)? 10 Gigabit Ethernet

Unlocking the Potential of Cisco SFP-10G-LR: The

Discover the full potential of Cisco SFP-10G-LR transceiver modules for 10GBASE-LR links over 10km of single-mode fiber at 1310nm wavelength.



SFP-10G-AOC1M Setup Guide: 10G Active Optical Cable Tips

The SFP-10G-AOC1M is a 10Gbps active optical cable (AOC) that integrates SFP+ transceivers on both ends with a pre-terminated optical fiber cable. The "1M" denotes its 1-meter

Gigabit Ethernet

Optical fiber transceivers are most often implemented as user-swappable modules in SFP form or GBIC on older devices. IEEE 802.3ab,

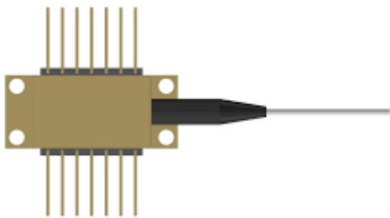


which defines the widely used



What Is 10GBASE-SR? Complete Guide to 10G SFP+ SR Optics

Designed for high-density and cost-sensitive environments, 10GBASE-SR offers an optimal balance of performance, power efficiency, and interoperability, making it the most widely deployed optical



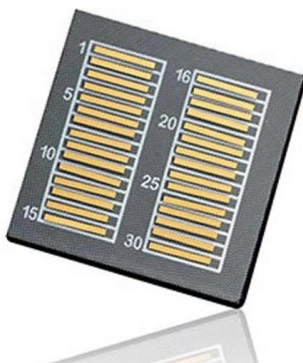
Understanding 10G Switches: The Future of Network Connectivity

Explore 10G switches: the future of network connectivity. Learn about 10Gb Ethernet, gigabit speeds, 10G switch features, and port options for your setup.



SFP vs SFP+: The OEM Guide to 1G and 10G Optical

SFP vs SFP+: What's the difference? We break down 1G (SX/LX) and 10G (SR/LR) compatibility, DDM features, and why OEM coding is critical for





Unlocking the Potential of 10GBASE-SR Optical

Explore the world of 10GBASE-SR optical transceivers with our Cisco-compatible guide. Discover SFP modules that offer 10G Ethernet



Cisco 10GbE Optics Guide

Current innovations in 10GbE/DWDM optics include full C-band tunability for ease of sparing, ordering, and provisioning of DWDM channels, as well as features like

Passive optical network

Passive optical network A fiber optic cable assembly with SC APC connectors, as commonly used to link optical network terminals to passive optical networks A



Product manual

10Gtek products catalogs and instruction manuals download including optical transceiver, DAC, AOC, Media Converter, POE etc.



Cisco Provider Connectivity Assurance Sensor SFP 10G Hardware

See the Cisco Provider Connectivity Assurance Sensor SFP Data Sheet for product details. The following table lists the regulation and standard compliance features of the Cisco Provider



Pluggable Transceivers Installation Guide

Each module provides 10 Gb optical connections. The type of switch, router, or other component determines the compatible type of SFP+ module. Use only Extreme Networks-certified SFP, SFP+,

How to Select the Optimal SFP-10G-SR Module for

This contrasts with the typical temperature limits of general optical modules (approximately 0°C to 70°C, or 32°F to 158°F), making the "SFP-10G



Building a 10G Home Network with Fiber Optics

Build a 10G home fiber network: learn how to choose switches/routers/APs, deployment tips, and practical considerations for high-performance home networking.



Dell EMC PowerSwitch S5248F-ON Port Groups

This document provides Dell EMC SmartFabric OS10 Full Switch mode configuration examples for a VxRail 4.7 cluster or a VxRail 7.0 cluster deployment using Dell EMC PowerSwitch S5248F-ON



What is a 10G SFP+ Switch and How to Use It?

This 10G SFP+ managed switch operates at Layer 3, providing advanced network management features such as port mirroring, VLAN, static

Using SFP+ 10GBASE-T Connectivity in Cisco Enterprise and Data

While existing 10GBASE-T switches such as the Cisco® Nexus N93108TC-FX can provide such connectivity today, the introduction of the SFP+ modular form factor enables variety and flexibility in



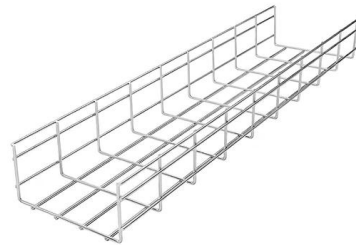


Ultimate Guide to 10gb Switch for Your Ethernet Network

The switch to a 10gb switch can alleviate bottlenecks due to the enhanced throughput and bandwidth capacity provided. This leads to higher

How to Connect 10G SFP+ Ports on a Switch: Setup, Configurations

In this guide, we compare 10G SFP+ direct attach copper cables (DAC), active optical cables (AOC), and optical modules--helping you decide which option fits your network needs.



Fiber Optic Networking 101: Creating a 10G Point-to

1 work Switch with a 10G Uplink To begin building a 10G point-to-point fiber link, a network switch with a 10G SFP+ uplink is crucial. The 10G

Cisco 10GBASE SFP+ Transceivers: The Ultimate

Cisco 10GBASE SFP+ Transceivers: The Ultimate Guide Cisco 10GBASE SFP+ transceivers are small form-factor pluggable (SFP+) optical



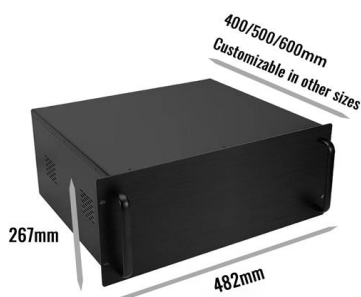
Optical Fiber and 10 Gigabit Ethernet

As 10 Gigabit Ethernet (10GbE) is introduced into networks the physical limitations and properties of optical fiber introduce new challenges for a network designer.



Using SFP+ 10GBASE-T Connectivity in Cisco

Instead of having to deploy a second dedicated 10GBASE-T switch, the SFP+ module can enable Cisco 10G and dual rate 10/25Gbps switches and



16 Most Common Questions Of Cisco SFP-10G-SR You

Today, 10G fiber network has been common in the telecommunications network, 10G switches are widely used by users. According



Guide: 10 Gigabit Networking

Guide: 10 Gigabit Networking For small office/home setups, 10-gigabit networking is probably a lot cheaper than you think. For larger environments, it's certainly going to cost more, but



Application of 10G DAC Fiber Optical Cable and

To achieve a server-to-switch connection, a 10G SFP+ optical module can be used with LC-LC single-mode fiber patch cords or LC-LC multimode fiber

Deployment Scheme for SFP-10G-T-X Transceivers

This guide outlines the configuration and power management strategy for deploying SFP-10G-T-X SFP+ transceivers on Cisco switches. The deployment scheme uses a color-coded system



Contact Us

For datasheets, pricing, or custom telecom energy solutions, please visit:
<https://www.koskolong.co.za>