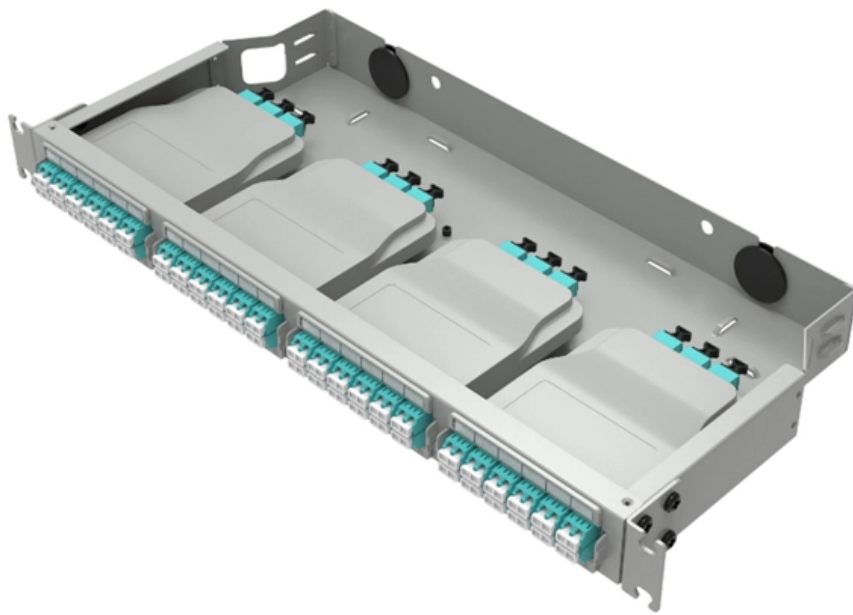




Adam Tas Corridor Energy

10kV Double Busbar Interconnection Cabinet





10kV Double Busbar Interconnection Cabinet



Cable branch box 1 in 6 out 10KV high voltage inlet

Cable branch box 1 in 6 out 10KV high voltage inlet cabinet with pt busbar inlet and outlet cabinet inflatable ring network cabinet. Shipping calculated at checkout.

10KV Cabinets

Types of 10kV Switchgear Cabinets A 10kV switchgear cabinet is a critical component in medium-voltage power distribution systems, designed to safely distribute, control, and protect electrical



Busbar Design & Installation UK , A& T Enclosures Limited

Busbar Design and Installation in the UK Expertise from ongoing testing to BS EN 61439-2 allows our engineers to provide support to ensure your design will meet



Types 8DA10 and 8DB10 up to 40.5 kV

Single-busbar switchgear 8DA10 and traction power supply switchgear 8DA11/12 is delivered



in transport units comprising up to four panels.
Double-busbar switchgear 8DB10 is delivered in



ABB MV Switchgear - Single Busbar Or Double Busbar?

If for any reason a cable, or cubicle in any busbar section is damaged, the cable can be isolated from the busbar, or the busbar section can be isolated,

UniGear ZS1 , ABB

UniGear UniGear o Air-insulated switchgear (AIS)
UniGear ZS1 UniGear ZS1 is available in single busbar, double busbar, or double-level configurations, certified for marine and seismic applications,



NES-FD

The type-tested double busbar switchgear in fixed-installation technology is distinguished by its compact modular design and particular ease of maintenance.



Double Busbar Panel

LMVP 12kV double busbar panel. The fixed metal-clad Enclosure comprises: A Control Cubicle in which the low voltage relays and instruments are fitted.



About Double-busbar switchgear

High-voltage distribution switchgear generally refers to the 10KV-class power distribution cabinet, which can be applied to 6KV or 10KV power system. The

Busbar Systems

Our busbar systems are available for a wide range of applications and the selection of the most appropriate system will depend on many factors such as the



Installing Busbars

Access the busbars through the side access of the cubicle. NOTE: It is also possible to reach the busbar from within the cubicle. Refer to Access to the Busbar Compartments, User Guide (BQT6904800).



Air-insulated switchgears double bus technology

The medium voltage double busbar switchgears offer you the best adaptation opportunities for different cases of operation through a large number of switching possibilities.



Busbar enclosure for temporary power & high current

Hazardous Area Busbar enclosure for 3kA
Designed to accommodate inflexible high current cables, the BusBar Box can safely terminate conductors up to 3200 amps



Busbar Design Standards for MV Switchgear

These standards collectively form the regulatory framework for busbar design, ensuring that all design and testing

LoRa handheld portable base station





UniGear ZS1

Air-insulated switchgear for power application UniGear ZS1 - Double Busbar is used to distribute electric power in a variety of demanding applications such as power utility substations, main substations and

ABB Group

Introduction to medium voltage switchgear by ABB, exploring its features, benefits, and applications in enhancing industrial digital technologies.

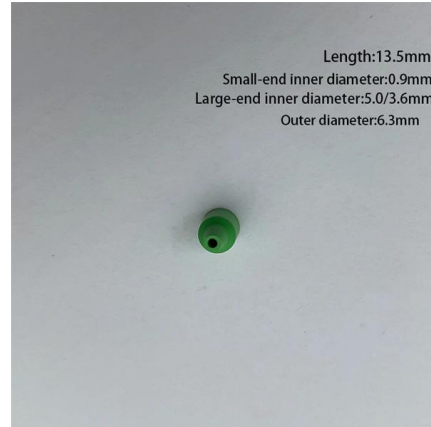


MMS , Medium-voltage switchgear panel , Overview

MMS is a metal-enclosed, double busbar, air-insulated switchgear system with vacuum interrupters and can be used in applications up to 24 kV. The use of

UniGear ZS1

Air-insulated switchgear for power application such as power utility substations, main substations and heavy industries. In any case the using of this product is highly recommended where there is a



Busbar Design & Installation UK , A& T Enclosures Limited

A& T Enclosures specialises in custom busbar design and installation in the UK for a wide range of electrical distribution systems. With more

Catalog Extract LV 10 - 04/2023

Take advantage of the benefits of digitalization at every step of the project with the SIVACON 8PS busbar trunking systems - from planning to installation on up to operation. SIMARIS software tools



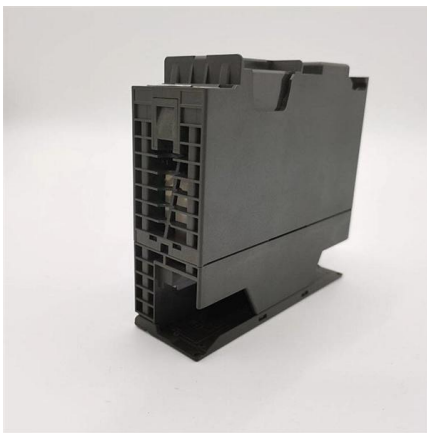
Single busbar systems up to 5000 A

The permissible rated busbar current of the proven switchgear type ZX2 is increased by parallel connection of the two busbar systems. The two physical busbar systems are combined electrically into a



UniGear ZS1 , ABB

UniGear ZS1 is available in single busbar, double busbar, or double-level configurations, certified for marine and seismic applications, and fully compliant with IEC, GB/DL, CSA, and GOST standards.



Air-insulated switchgears double bus technology

Double busbar switchgear The medium voltage double busbar switchgears offer you the best adaptation opportunities for different cases of operation through a large number of switching possibilities. Our air

MEDIUM VOLTAGE SWITCHGEAR SELECTION AND

There are many different types of enclosure designs for medium voltage switchgear use. However, the most commonly accepted and used style is



8DA10-8DB10 , Siemens

Siemens 8DA10 single-bus and 8DB10 double-bus switchgear are arc-resistant, gas-insulated, medium-voltage solutions. Use these designs in limited spaces, harsh environments, and to lower your total



Cable branch box 1 in 6 out 10KV high voltage inlet

Decrease quantity for Cable branch box 1 in 6 out 10KV high voltage inlet cabinet with pt busbar inlet and outlet cabinet inflatable ring network cabinet Increase



MMS , Medium-voltage switchgear panel , Overview

MMS is a metal-enclosed, double busbar, air-insulated switchgear system with vacuum interrupters and can be used in applications up to 24 kV. With flexibility in

Bespoke Busbar Systems

In partnership with the leading manufacturers of IP55 & IP68 Cast Resin Busbar Systems, we are able to offer a complete solution for all your busbar





Contact Us

For datasheets, pricing, or custom telecom energy solutions, please visit:
<https://www.koskolong.co.za>