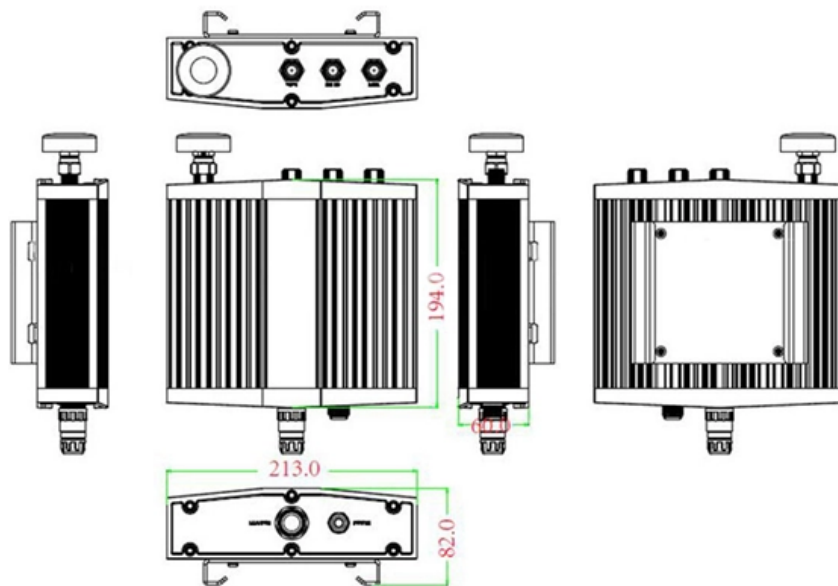




# 10kV without busbar protection

## Mechanical drawing





## 10kV without busbar protection

---



### POWER FLOWS AND SHORT CIRCUIT CALCULATIONS FOR KV

3.1. Three-phase short circuit for 10kV and 20kV operating voltage An analysis of three-phase short circuit currents on 10 kV and 20 kV busbars TR1 and TR2 was performed for the case when

### 10kV Flame-Retardant Busbar Sleeve , Heat Shrink Insulating Tubing

High-performance 10,000 Volts Busbar Sleeve with flame-retardant, halogen-free polyolefin. Provides superior electrical insulation, shrink ratio 2:1, UL & RoHS compliant. Ideal for low-voltage protection



### Fault Diagnosis and Troubleshooting of 10kV High-Voltage Switchgear

High-Voltage Fuse Blown: Tighten busbar joints, adjust protection settings, and replace the fuse. Busbar Discharge or Insulator Damage: Tighten busbar connection bolts, clean dust from insulator surfaces,

### Standard cubicle configurations for a medium voltage

MV metal-enclosed switchgear This technical article will shed some light on the standard



design of medium voltage metal-enclosed switchgear



### 10kv Bus Bar pt Feeder

Good Answer: If you close the breaker without a PT in position, to anyone looking at local or remote meters or to some of the protection, it will



### Busbar and Multipurpose Differential Protection and Control

1. Description REB611 is a dedicated busbar protection relay for phase-segregated short-circuit protection, control, and supervision of single busbars. REB611 is intended for use in high-impedance



### 8DA10-8DB10 , Siemens

Siemens 8DA10 and 8DB10 arc-resistant gas-insulated switchgear offer space-saving, durable solutions for harsh environments and lower ownership costs.



## Implementation of Protection and Control Systems in the

This article describes implementation concept of modern protection and control system in the substation Sarajevo 13 with special reference on using IEC 61850 GOOSE messages for interlocking conditions



## Busbar Differential Protection Scheme

The goal was to ensure that faults in any feeder or transformer connected to the busbar did not affect the entire busbar system. However, the

## Implementation of Protection and Control Systems in the

The group of protections that operates locally are standard protection function for this type of switchgear (overcurrent protection, sensitive earth fault protection, etc.). The group of protections that operates



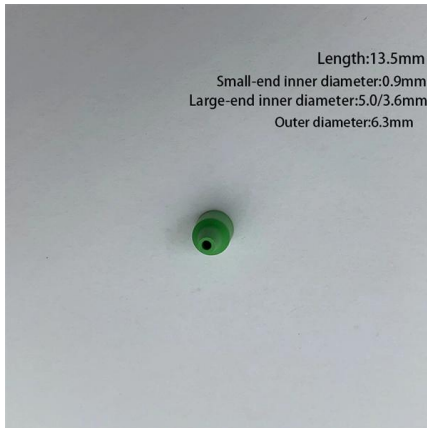
### 1. SCOPE

1. SCOPE This Relevant Electrical Standard (RES) defines the relevant technical specifications, policies and procedures that shall be complied with by all users connected to or seeking connection to the SP



## Busbar Protection Overview and Methods

This document discusses busbar protection in substations. It is divided into 8 parts that cover general principles, operating principles for different



## POWER FLOWS AND SHORT CIRCUIT CALCULATIONS FOR KV

In this paper, the current-voltage conditions of the distribution network at 10 kV and 20 kV operating voltage have been analysed. Analyses were performed using the software tool DlgSILENT Power

## 8DJH

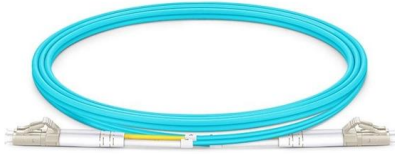
Components Three-position switch-disconnector Vacuum circuit-breaker Busbar extension, modularity HV HRC fuse assembly Allocation of HV HRC fuses and transformer ratings Current and voltage





## High Voltage Busbar Protection

**HIGH VOLTAGE BUSBAR PROTECTION** The protection arrangement for an electrical system should cover the whole system against all possible faults. Line protection concepts, such as overcurrent and



## Bus bar protection scheme in a substation

What is a busbar in an electrical substation? A busbar is a metallic strip or bar used to conduct electricity within an electrical substation. It acts as a common connection point for multiple incoming and



## Novel Busbar Protection Scheme for Impedance-earthed Distribution

is intended for busbar protection in distribution systems (where usually a bigger time margin for clearing the faults is allowed), it is not expected that a small delay will present a jeopardizing factor.

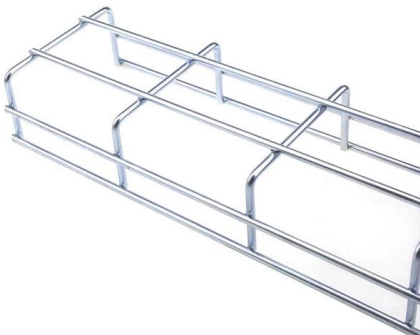
## Bus Protection Theory

The choice of protection technique used for a specific busbar depends on the protection requirements for speed and security, balanced against the cost of implementing a specific solution, and the



## Anforderungen an Netzschutz

The Protection Limiting Current is defined as the value of the current which can be transferred safely, i.e. without picking-up by the starter elements and/or without generating a trip by the protection system.



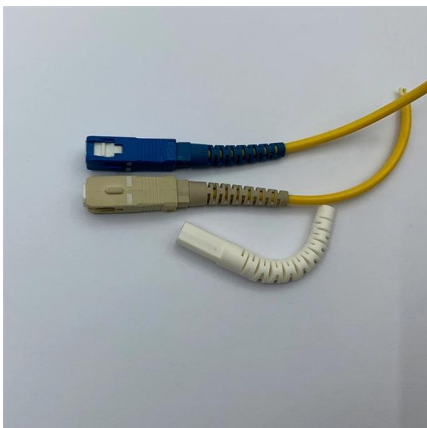
## BUSBAR PROTECTION

Busbar protection systems protect substation busbars and associated equipment from the consequences of short-circuits and earth faults. In the long ago early days of power system



## Protection for 132kV, 33kV and 6.6/11kV Systems

All main busbars at 33kV substations shall be protected by fast acting fully discriminative protection incorporating main and check systems. The standard scheme is for metal enclosed switchgear for





## Busbar protection schemes for distribution substations

The problem is that the busbars are usually left out without specific protection because it is assumed that they have high reliability. It was feared that



## Design issues in HV busbar protection systems

Busbar protection (BBP) This technical article discusses criteria and requirements for designing protection systems for busbars in HV/EHV networks.

## Bus Protection Theory

Busbar Protection Techniques The choice of protection technique used for a specific busbar depends on the protection requirements for speed and security, balanced against the cost of implementing a



## IS 8084 (1976): Interconnecting busbars for ac voltage above 1 kV up

NOTIG - For busbars in contact with insulating materials, the temperature rise shall be governed by the maximum permissible temperature for the class of insulation. \*For high current copper busbar



### Technical Application Papers No.11 Guidelines to the construction

The manufacturer can also indicate the degrees of protection relevant to special configurations which may be present in service, such as the degree of protection with doors open and the one with

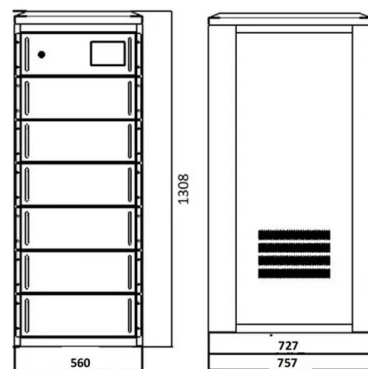


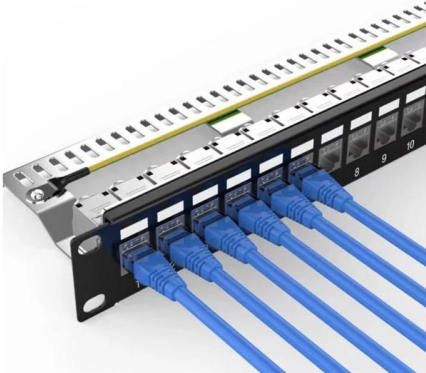
### Technical Application Papers No.11 Guidelines to the construction

In each test, the incoming circuit and the busbars are lo-aded to their rated current and as many outgoing circuits in a group are loaded to their rated current as necessary to distribute the incoming

### Busbar Protection

18.9.2 Busbar Protection Busbars are frequently left without protection because it is very rare to have faults, especially metal-clad switchgear, and it is protected by backup protection, it can be protected



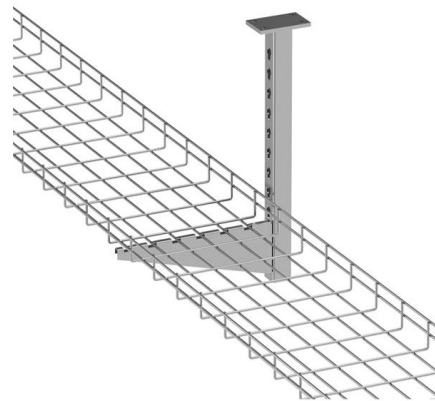


## Principles and applications of busbar protection

Principles and applications of busbar protection schemes (you SHOULD know about) - photo credit: MANTRA SWITCHGEAR CO.,LTD. Also,

## BUSBAR PROTECTION

During the time when no busbar protection is in operation, the activation of a reverse zone in the distance protection can provisionally replace the busbar protection.



## Contact Us

---

For datasheets, pricing, or custom telecom energy solutions, please visit:  
<https://www.koskolong.co.za>