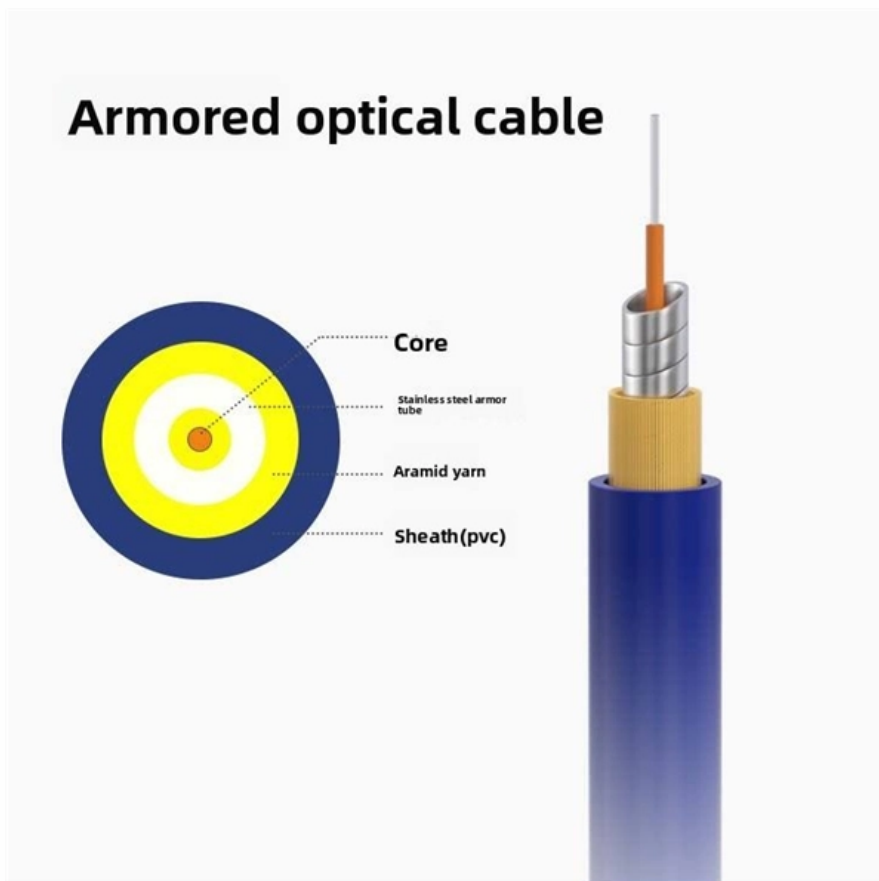




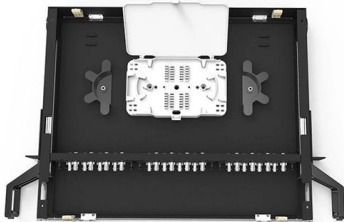
Adam Tas Corridor Energy

12-core Dutch bend-insensitive fiber





12-core Dutch bend-insensitive fiber



The FOA Reference For Fiber Optics

A second approach is to leave the core index profile alone but carefully engineer the trench to produce the bend-insensitivity. Today, essentially all MM fiber is bend

What is a bend-insensitive fiber, and when should it be

Designed to withstand sharp bends and extreme twists without causing substantial signal degradation, this type of fiber is invaluable in a variety of modern



What is a bend-insensitive fiber, and when should it be

Bend-insensitive fiber is a crucial advancement in the realm of optical fiber technology, providing significant benefits over traditional fibers. Designed to

What is Bend-Insensitive Fiber?

Bend-insensitive fiber optic cables have become increasingly important in modern telecommunications and networking systems.



These cables



ClearCurve Single-mode Optical Fibers , Bend

ClearCurve ® ZBL and LBL bend-improved single-mode fibers are cost-effective solutions designed to meet a wide array of applications and deployment



Dual Band Bend Insensitive Fiber , Fibercore

Dual Band Bend Insensitive Fiber These germanium doped Single-Mode (SM) fibers offer excellent performance in applications where the fiber will be subjected to



Top 3 Bend-Insensitive Fiber Patch Cable Brands for FTTH (2026)

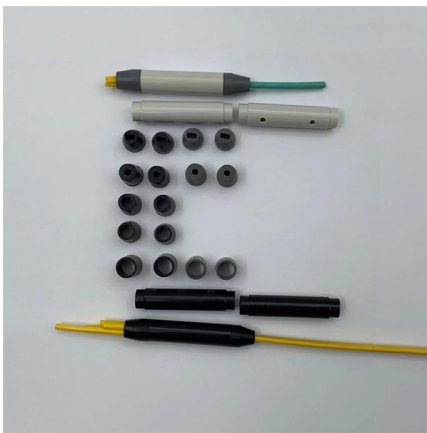
Corning vs CommScope vs Wolon. We compare the best bend-Insensitive Fiber Patch Cable fiber patch cords and reveal the real factory cable cost (just \$0.15/unit).





Bend Insensitive Fibres , Prysmian

They are the only fibres capable of securing the whole fibre spectrum, especially at the longer wavelengths (1625 nm and above), by minimising losses linked to



DUAL BAND BEND INSENSITIVE FIBER

Telecoms style bend insensitive fibers with specialty coatings These germanium doped Single-Mode (SM) fibers offer excellent performance in tight space environments and are available with a 9.8mm

What is Bend-Insensitive Fiber?

But what exactly is bend-insensitive fiber, and why is it a game-changer? This beginner's guide will answer these questions and explore its



Quiet Technological Changes: An update on bend

Many people take optical fiber for granted. My job requires focusing on finding the changes that might make a difference in the field. Some changes are



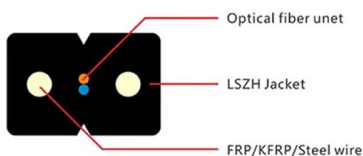
ClearCurve Single-mode Optical Fibers , Bend

ClearCurve bend-insensitive fibers are compliant with ITU-T Recommendations G.652.D and G.657, providing superior installation speed and efficiency, and



Bend-Insensitive Fiber - What Is It? - trueCABLE

Discover the benefits of bend-insensitive fiber for reducing stress and bending loss in optical fiber. Learn about its design, applications, and



PM14XXB-XP, Bend Insensitive Panda-Type PM, Optical Fiber

Optimized for use in the 1400-1500 nm range, these fibers are used in all PM applications for data and telecom. Coherent has applied its unique manufacturing facility and capabilities to this product area





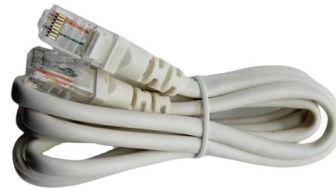
Understanding Bend-Insensitive Fibre: ITU-G.657

Bend-insensitive fibre (BIF) is designed to mitigate the risks associated with overbending. It incorporates an additional layer of protection around the core,



Bend Insensitive Optical Fiber , Fibercore

Bend insensitivity can be considered in terms of both the mechanical and optical performance of a fiber. In the case of a mechanically bend insensitive fiber, a reduced cladding such as 80µm or 50µm



Comparing bend-insensitive singlemode fibers

Currently, there are five primary types of bend-insensitive singlemode fibers available: extreme small core, small core, optimized matched/depressed

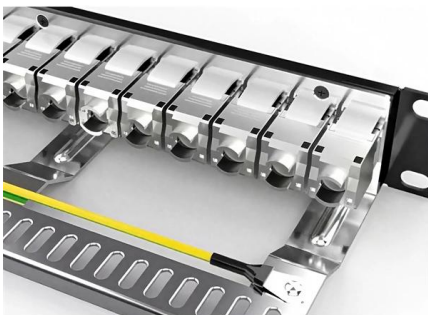
Bend Insensitive Fibres , Prysmian

Bend-insensitive single mode fibres (ITU-T G.657.A1 and G.657.A2) are a crucial part of the world's shift towards flexible and reliable connectivity. They are the



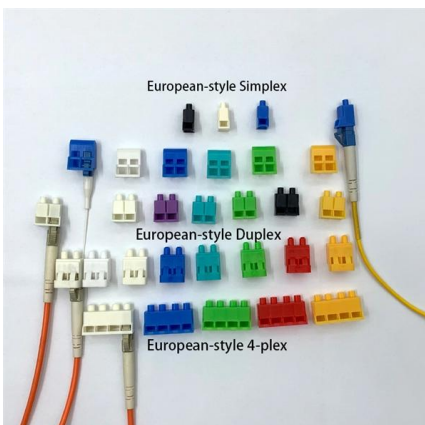
The FOA Reference For Fiber Optics

Let's examine the design of bend-insensitive multimode fiber (which we will usually call by its acronym BI MMF) that shows the technique. In regular graded index



12 Fiber OS2 Bend Insensitive G.657.A1 Loose Tube Single Jacket

About : TeraFlex Bend Resistant G.657.A1 loose tube single mode cable is the product of choice as the backbone in Outside Plant (OSP) environments. Optical fibers and water-blocking elements are



Bend-Insensitive Fiber: Types, Benefits & Applications

Bend-insensitive fiber has transformed how we deploy and maintain optical networks. By minimizing loss in tight bends, it simplifies installations, reduces costs, and enables new



Bend Insensitive Single Mode Fibers , Single Mode

Bend-insensitive, single-mode sensor grade fibers, available with 820, 1310, and 1550 nm cutoff wavelengths, feature a high NA of 0.16, making them suitable for



Bend-Insensitive Fiber: Types, Benefits & Applications

Learn what bend-insensitive fiber is, its types (single-mode & multimode), benefits, and why it's crucial for modern high-density fiber networks.

Contact Us

For datasheets, pricing, or custom telecom energy solutions, please visit:
<https://www.koskolong.co.za>