



**Adam Tas Corridor Energy**

# **12-core drawer-type fiber optic patch panel**





## 12-core drawer-type fiber optic patch panel

---

### 12 Core Fiber Optic Patch Panel

Fiber Patch Panel 12 Core is constructed with the highest quality materials, including sturdy aluminum alloy and durable plastic. This means it is built to last and can



### 1U Fiber Patch Panel with 24 SC, FC, LC, ST Adapter

The complete 1u fiber patch panel can be pre-terminated with 24 SC, LC, ST, FC adapter, easy and quick for optical fiber termination.



### Fiber Patch Panel, 24 Port Loaded SC

· Fiber input: 4 · Adapters output: 12core or 24 core or 48 core · Suitable for different adapter (SC simplex, SC duplex, LC duplex, ST simplex, FC simplex) · The slide

### Fiber Patch Panels: A Beginner's Guide , RLH

Fiber optic patch panels are enclosures that act as a distribution hub for fiber cable. A bulk (multi-



strand) fiber cable enters the patch panel and then each fiber strand

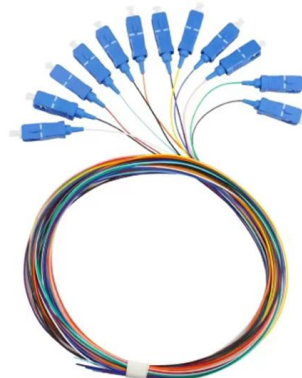


### 12 Core Fiber Optic Patch Panel

12 Core Fiber Optic Patch Panel JZ-1822 Features 19 inches standard type rack box, It can be pulled and took out .the extension piece is slip slot is convenience of

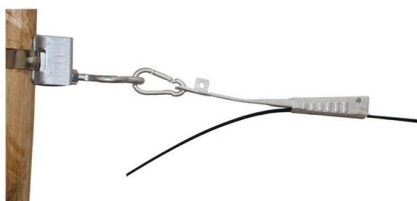
### 1U 12/24 Cores Fibre Optic Patch Panel Model:

1U 12/24 Cores Fibre Optic Patch Panel Model: SJ-OTB-M12-A SJ-OTB-M12-A 1U 12/24 cores fiber optic patch panel is a termination box for cable fibers, that will



### 12 Cores Drawer Type Rack Mount Fiber Optical Patch

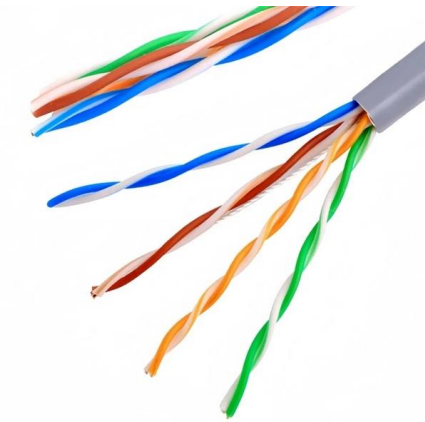
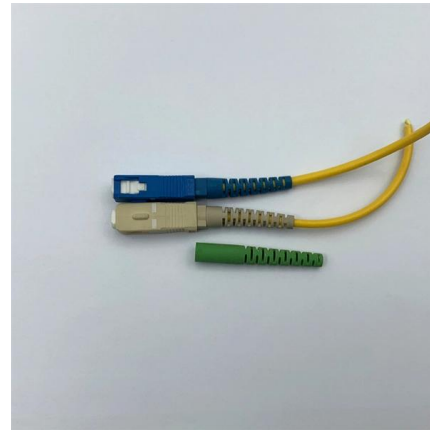
12 Cores Drawer Type Rack Mount Fiber Optical Patch Panel, Find Details and Price about Patch Panel Fiber Optic Patch Panel from 12 Cores





### **Patch panel optical fiber 12 core**

Typically, they look like trays, and are designed to house dense arrays of fiber optic cables and optical fibers in a way that protects the fibers and arranges them so they are easy to work with and maintain.



### **12 Core Duplex Ports LC Terminal Mounting Housing**

We are a 12 Core Duplex Ports LC Terminal Mounting Housing Fiber Patch Panel Manufacturer. We supply fiber optic panels in competitive cost and short lead

### **12-48 Core Fiber Optic Patch Panel, Rack-Mount ODF**

19inch Optical Distribution Frame / Fiber Optic Patch Panel (ODF) The ODF Rack-Mounted 12-48C Fiber Patch Panel offers a robust and reliable



### **Best Sliding Drawer Type Fiber Optical Patch Panel 12**

The sliding drawer type fiber optic patch panel is made of metal in 19" standard structure. There are 2pcs of stainless steel rails at the sides of the box. This



### **Drawer Type Fiber Optic Patch Panel - Trans Pasifik Teknologi**

Drawer Type Fiber Optic Patch Panel is used as termination panel for optical fiber wiring, fixation, splicing and patching. Based on different height, there are 1U patch panel, 2U patch panel, 3U patch



### **12 port Fiber Optic Patch Panel SC LC 19? 1U Drawer Type**

12 port Fiber Optic Patch Panel SC LC 19? 1U Rack Mounted Single Mode Multimode Drawer Type - Black Made of 1.2mm Premium Cold Rolled Steel Plate Supports

### **12 port Fiber Optic Patch Panel SC LC 19? 1U Drawer Type**

Drawer type fiber patch panel ODF offers 12, 24, 48, 72, 96, 144, 288 ports for FTTH, FTTB, FTTX networks. Made of cold-rolling steel, CE/ROHS/ISO9001/ANATEL certified., Alibaba .





### **12 Port Sliding Fiber Patch Panel For SC LC Option-**



The 12 port sliding fiber patch panel is suitable to configure SC, LC adapter on the front, and also is available to pre-loaded with 12 strand singlemode or multimode

### **FTTH 4u 144/288 core Sc/apc Fiber Optic Patch Panel**

Core Specifications Sliding Drawer Type Fiber optic patch panel are the auxiliary equipment for terminal wiring in optical fiber transmission communication



### **12 cores Fiber Patch Panel Manufacturer, Supplier , Sopto**

12 cores Fiber Patch Panel The 19-inch rack-mounted end box is a passive component for terminal distribution of trunk cables in fiber-optic communication



### **SJ-OTB-M12-F 1U 6-12 Cores Fiber Optical Patch Panel**

Drawer Type Fiber Optical Patch Panel with splice cassette, for 1U 19", load with Capacity for 6 SC/APC duplex or 12 SC/APC simplex fibers. If you are looking for



### 1U, 12/24 port Rackmount Fiber Optic Patch Panel

Rackmount Fiber Optic Patch Panel is a wiring device used to terminate, protect and organize the fiber optic cables.



### Fiber Patch Panel - 12Port - Drawer Style - Southern Elements

The fiber 12 port rack mount drawer style patch panel is a great enclosure for installation in a rackmount space. Ideal for data centers, enterprise network installations and FTtx applications. Designed to



### 12core 24core 48core 72core 96core Sc FC LC Drawer

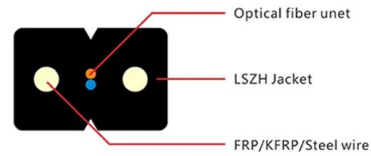
12core 24core 48core 72core 96core Sc FC LC Drawer Type Slideable Fiber Patch Panel with Pigtail Rack Mount ODF, Find Details and Price about Optic Patch





## 12 Port LC Fiber Patch Panel

Choice of 12 or 24 cores fibre patch panel for multimode and single mode fibre cable. You can order this 12 port LC fiber patch panel ODFKLC12 with LC duplex single



## fiber patch panel 12 port

Telhua's 12-port fiber optic patch panel offers high-density cable management with IEC/TIA compliance. Features durable steel construction, modular design for fast

## 12 ports optical fiber Panel drawer odf 24 core duplex lc 12 core

It is with standard 19 inch size and properly designed to control the bend radius of the cable inside the enclosure to avoid extra optical loss. This frame is ideal for indoor fiber optic cables



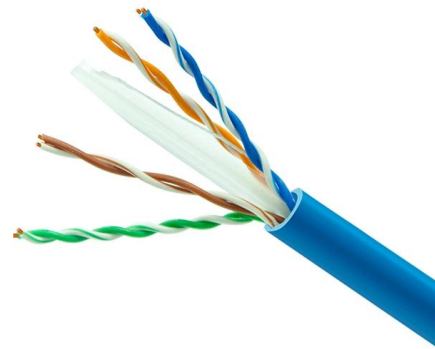
## 1U 12 Ports SC DX/LC QD Sliding Patch Panel

Nexconec sliding patch panel accepts 12 adapters SC Duplex or LC Quad within 1U space. The panel can be pre-loaded completely with the required adapters or pre



### **12 Core Fiber Optic Patch Panel**

The frame box has cable fixed press block, reinforced core, fixing device, 24 molten core fiber blanks, coiling device. All connecting rack adopts sealed rubber entrance.



## **Contact Us**

---

For datasheets, pricing, or custom telecom energy solutions, please visit:  
<https://www.koskolong.co.za>