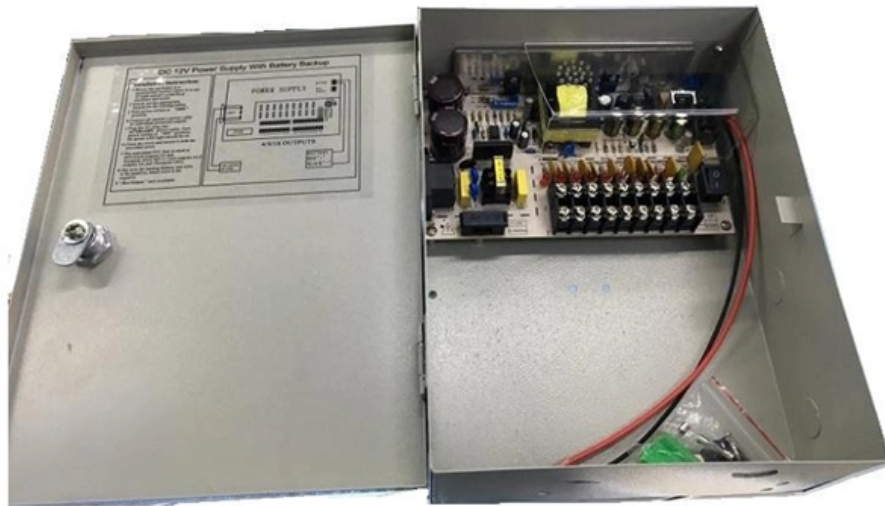




Adam Tas Corridor Energy

1300 optical module transmission distance





Overview

Due to the relatively high fiber attenuation, the transmission distance is typically within 40km. When engineers search for "SFP wavelength," they are typically trying to answer a practical deployment question: Which optical wavelength should I use—850 nm, 1310 nm, or 1550 nm—and why does it matter?

The answer directly affects fiber compatibility, transmission distance, link stability, and. Wavelength (denoted λ) is the physical distance between successive peaks (or troughs) of an electromagnetic wave.



1300 optical module transmission distance

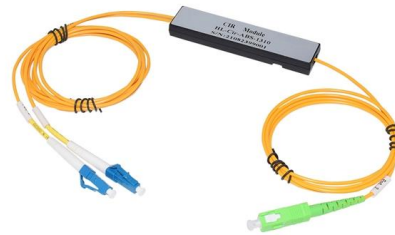


What is the difference between SFP 1310nm and

What is the advantage of sfp 1310nm? SFP modules operating at a 1310nm wavelength offer several advantages, particularly suitable for certain network

Data sheet 6GK1503-3CC00

Data sheet 6GK1503-3CC00 Product type designation PROFIBUS OLM/G12-1300 V4.0 T DISTANCES MEASURING OUTPUT



6GK1503-3CC00 - PROFIBUS OLM/G12-1300 V4.0

PROFIBUS OLM/G12-1300 V4.0 optical link module with 1 RS485 and 2 glass FOC Interfaces (4 BFOC sockets), 1300 Nm shaft Length for large distances with



Wavelength and Transmission Distance of Optical

The transmission distance of optical transceiver modules is divided into short distance, medium



distance, and long distance. Usually, short-distance



Fiber Optic

Fiber optic transmitter module for transmitting incremental encoder and sensor signals with a transmission distance of up to 3000 m at an optical wavelength of 1300 nm.

Fiber Optic Wavelengths Explained: 850 vs 1310 vs

Compare loss, transmission distance, and real-world applications to choose the right wavelength for your network or custom cable solution.



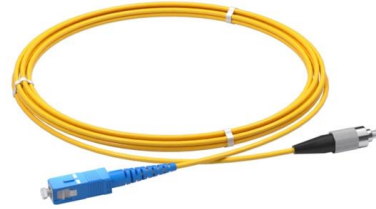
SFP Optical Module Transmission Distance Range , Yingda

Single-mode SFP optical modules typically use wavelengths of 1310nm or 1550nm, paired with 9/125um single-mode fiber, supporting long-distance transmission. Their transmission



SFP Optical Module Transmission Distance Range , Yingda

SFP optical modules transmission distance vary from the type of fiber, wavelength, and data rate, and can be hundreds of meters, 2km, 10km to 80km or more.



What is the difference between 1310nm and 1550nm SFP?

It has a long transmission distance and low transmission loss, and is widely used in wide area networks (WAN) and metropolitan area networks (MAN) and other scenarios that need to span

The relationship between wavelength and transmission

When paired with multimode, the maximum transmission distance is 2km, and when paired with single-mode, the maximum transmission distance is 40km. At 1310nm



Everything You Need to Know About 1310nm Optical

1310nm optical modules are essential for efficient data transmission in fiber optic networks, especially for medium distances. These modules offer low



Wavelength and transmission distance of optical modules

The transmission distance of optical module is divided into short distance, medium distance and long distance. Usually short distance



Everything You Need to Know About 1310nm Optical

Key Characteristics of 1310nm Optical Modules
1310nm optical modules are one of the most widely used solutions in optical communication,

What are the detailed parameters of the optical module

What are the detailed parameters of the optical module? Optical module center wavelength, transmission distance, loss and dispersion, laser type, fiber interface, etc. Let's take a





Parallel Optics and WDM Optics Subassemblies for High-speed Optical

In long-distance transmission, optical modules generally use WDM (wavelength division multiplexing) technology. WDM is a technology that enables various optical signals to be transmitted

Fiber Optic Cable Distance: A Comprehensive Guide

Fiber optic cables are the backbone of modern communications, enabling high-speed data transfer over vast distances. Unlike traditional copper



What Are the Key Parameters of Optical Modules

Understand the key parameters of optical modules, including transmission rate, distance, wavelength, and fiber compatibility, for better network

Understanding 1310nm Fiber: A Comprehensive Guide

Explore the complexities of 1310nm fiber wavelengths in this comprehensive guide. Learn about fiber optics, optical transmission, and more.



SFP Wavelength Guide: 850nm vs. 1310nm vs. 1550nm

1310nm SFP singlemode modules provide a practical and reliable solution for 10-20 km transmission in campus and metro environments, offering



Comparing OTDR Wavelength Responses

1. Comparing OTDR Wavelength Responses - Understanding Wavelengths Fiber optic systems utilize various wavelengths to transmit data.



SFP Optical Transceiver Modules for Long Distance: A

Discover everything you need to know about SFP optical transceiver modules for long-distance fiber transmission. Compare LX, EX, ZX models and



Fiber Optic Transmission Distance: Single Mode vs. Multimode Guide

Learn how fiber optic transmission distance varies between single mode vs. multimode fiber. Discover key factors affecting fiber distance, bandwidth, and cost to choose the right fiber for



SFP Distance Explained: Real-World Range, Limits, and Optics

Understand SFP distance, fiber optic range, and real-world limits of SR/LR modules. Learn how wavelength, fiber type, and optics affect performance.

Siemens

Siemens provides support for industrial automation with detailed product datasheets and resources for efficient and reliable solutions.



The relationship between wavelength and transmission

The transmission distance of optical modules is divided into short distance, medium distance, and long distance. Short distance transmission



Fiber Optic Cable Distance: A Comprehensive Guide

In this blog, I will discuss the fiber optic cable distance, the effect factors, how to choose the right fiber optic cables, and how to compare the



1300 nm Fiber Optic Transmitter and Receiver

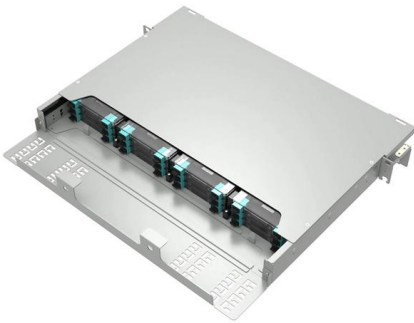
Description The HFBR-0300 Series is designed to provide the most cost-effective 1300 nm fiber optic links for a wide variety of data communication applications from low-speed distance extenders up to



Comprehensive Knowledge Of Long-distance Optical

Among them, the transmission distance of optical modules also varies. In different fields and links of optical communication network transmission, the





Technical Characteristics Of 10G Optical Modules With

Due to the relatively high fiber attenuation, the transmission distance is typically within 40km. 1310nm wavelength optical modules are widely used in

Contact Us

For datasheets, pricing, or custom telecom energy solutions, please visit:
<https://www.koskolong.co.za>