



Adam Tas Corridor Energy

16-core single-mode 10 Gigabit optical cable





16-core single-mode 10 Gigabit optical cable



Gigabit Singlemode Fiber to Ethernet Media Converter,

This economical unit converts a copper Ethernet signal to singlemode fiber (and vice versa) to extend a Gigabit Ethernet connection up to 12.4 miles (20 kilometers).

Accessories MINI-GBIC-LX-SM1310 1000BASE-SX SFP 1310-nm 10

The MINI-GBIC-LX-SM1310 is aligned to IEEE 1000BASE-LX optical specifications and supports a link length of up to 10 kilometers over a single-mode fiber (SMF) with an LC connector. It adopts the SFP



Cisco 25GBASE SFP28 Modules Data Sheet

The Cisco 25GBASE SFP28 (Small Form-Factor Pluggable) portfolio offers customers a wide variety of high-density and low-power 25 Gigabit

Singlemode 9/125 Fiber Cables , CableWholesale

Singlemode cable has a 9-micron core and 125-micron cladding diameter that are ideal for



low-loss transmissions that span distances as long as several miles. We have single mode fiber cable in all



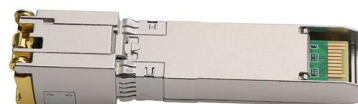
10Gtek Fiber Patch Cable

10Gtek Fiber Patch Cable - LC to LC OS2
10Gb/Gigabit Singlemode Jumper Duplex 9/125
LSZH Fiber Optic Cord for SMF SFP Transceiver,
Yellow, 10-Meter (32.8-ft)



Introduction of Cisco 10G SFP+ Modules

Cisco 10G SFP+ modules are optical devices intended for 10 Gigabit Ethernet deployments in diverse networking environments. They offer customers



SFP+ Optical Transceiver Modules (10G-SR/LR)

Genuine Amphenol 10GBASE-SR SFP+ Optical Transceiver Modules provide a high-density, high-performance interface for 10-Gigabit Ethernet and Fibre Channel





OS1/OS2 Singlemode Optical Fiber

PANDUIT OS1/OS2 fibers meet or exceed numerous standards for optical fiber, including ITU-TG.652 (Categories A, B, C and D), IEC 60793-2-50, ISO 11801 OS2, and TIA-492-CAAB and Telcordia GR-20.



10 Gigabit Ethernet

Multiple vendors introduced single-strand, bi-directional 10 Gbit/s optics capable of a single-mode fiber connection functionally equivalent to 10GBASE-LR or -ER, but

10G SFP

Choose the 1310-nm Singlemode SFP (LC) 10G optical transceiver, which transmits and receives optical data over singlemode optical fiber up to 10 km. Meets Tough



16GBASE SFP+ 1310nm 10km Single-Mode Optical Transceiver

Using the 2-wire serial interface defined in the SFF-8472 MSA, these 16G fibre channel transceivers provide real-time temperature, supply voltage, laser bias current, laser average output power and



Singlemode Fibre , Comms InfoZone

OS1 and OS2 are the specifications for single-mode optical fibre cable. Maximum bandwidths and corresponding distances for singlemode are: 10 km for 10-gigabit



ipolex Gigabit Single-Mode LC Fiber to Ethernet Media

About this item Seamless Conversion of LC Fiber to Copper - This fiber optic to ethernet media converter kit includes a single mode 1000BASE-LX SFP module (1310nm), which enables you to convert 1000BASE-LX Duplex LC fiber to 10/100/1000 Base-T RJ-45 copper media or vice versa.

10/100/1000Base-T to 1000Base-LX 20km Fiber Media

The MC-GSA11-20x Series is a Gigabit Ethernet Media Converter designed to convert 10/100/1000BASE-T copper to 1000BASE-LX fiber optic. The Gigabit



Small-Form Factor Pluggable (SFP) and Stacking Accessories

This article provides technical data on Fiber Transceivers and stacking accessories compatible with Meraki devices.



10Gtek Gigabit SingleMode Fiber to Ethernet Media Converter

10Gtek Gigabit SingleMode Fiber to Ethernet Media Converter, Dual SC Fiber, 1000Base-LX to 10/100/1000Base-Tx Gigabit SMF Fiber SC to Copper RJ45 Ethernet Converter, UL Certified, 20km, Pack of 2



1G to 16G FC & 10G Ethernet SFP+ transceivers

Extended reach SFP+ - Multimode and single-mode fiber transceivers with CWDM and DWDM options for metro and regional optical transport over long distances.





10Gtek OS2 Fiber Patch Cable

This item: 10Gtek OS2 Fiber Patch Cable - LC to SC 10Gb/Gigabit Singlemode Jumper Duplex 9/125 LSZH Fiber Optic Cord for SMF SFP Transceiver, Yellow, 3

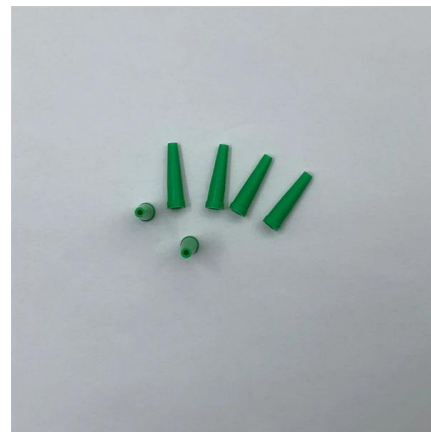


Optic Modules Datasheet

Data Sheet datasheet is intended to guide the user through the various options available when choosing an optic module for a given platform depending on the architecture.

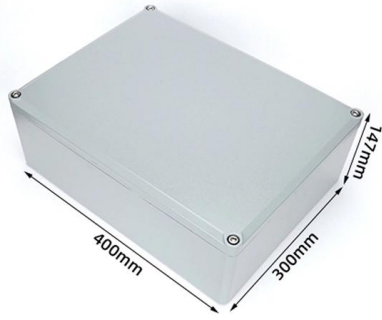
Drop+Fiber+Cable+Contact+Co.,+Ltd++86

16 Companies and suppliers for Drop+Fiber+Cable+Contact+Co.,+Ltd++86 Find wholesalers and contact them directly Leading B2B marketplace Find companies now!



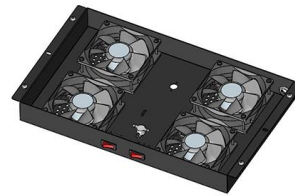
XG-SFP-LR-SM1310 10GBASE-LR SFP+ 1310-nm 10-km DOM

The XG-SFP-LR-SM1310 is aligned to IEEE 10GBASE-LR optical specifications and supports a link length of up to 10 kilometers over a single-mode fiber (SMF) with an LC connector.



10G SFP

Looking for a cost-effective SFP+ solution that enables higher port densities and greater bandwidth? Choose the 1310-nm Singlemode SFP (LC) 10G optical



10G SFP+ ER SMF 1310nm 40km Transceiver Module

Featuring a built-in Semtec/Macom chip and reliable DFB laser from global leaders, the 10G SFP+ ER1310 module delivers low power consumption and stable optical

1 Gigabit Singlemode SFP Fiber Optic Transceivers

1 Gigabit Singlemode SFP Transceivers Our 1 Gigabit Singlemode SFP Transceivers offer high-performance, reliable connectivity for singlemode fiber optic networks.





Single Fiber Media Converter , 10/100TX-100FX Single

Versitron's single fiber media converters can transmit & receive over one fiber. This 10/100TX-100FX single fiber converter accommodates 10 base or 100 base

1G SFP LX 1310nm 20km Single mode Transceiver

Generic SFP-1G-LX Compatible 1000BASE-LX/LH SFP 1310nm 10km-20km Transceiver supports 1G gigabit Ethernet throughput over singlemode fiber (SMF)



OS2 Single Mode Fiber Optic Cables, SMF Duplex

Get OS2 single mode duplex fiber patch cables for 1G/10G/40G/100G/400G Ethernet fiber connections to transport data up to 10km at 1310nm and 40km at 1550nm.

10G SFP+ Optical Transceivers , Transceiver Module

FS 10GbE SFP+ module solutions provide a wide variety of 10 Gigabit Ethernet connectivity options for data centers, enterprise wiring closets, Internet Service





Contact Us

For datasheets, pricing, or custom telecom energy solutions, please visit:
<https://www.koskolong.co.za>