



Adam Tas Corridor Energy

35kV Busbar and Equipment





35kV Busbar and Equipment

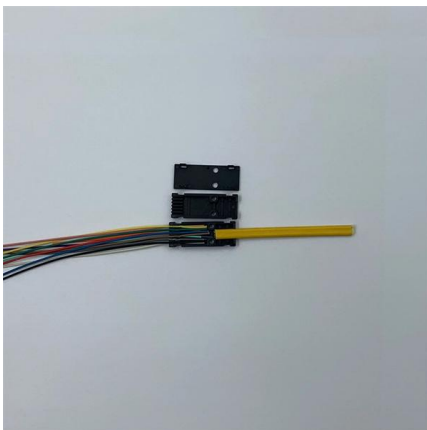


Gulifa 35kV Flame Retardant Heat Shrinkable Busbar Bushing (Red)

Gulifa 35kV heat shrinkable busbar bushing is perfect for insulating busbars in switchgear, power distribution units, control panels, substations, and heavy industrial equipment.

33kV 4000amp Fully Insulated Duresca Busbar System

Fully insulated busbars provide connections between medium and high voltage equipment such as generators, switchgear or transformers. The Duresca



Types 8DA10 and 8DB10 up to 40.5 kV

All high-voltage parts including the cable terminations, busbars and voltage transformers are metal-enclosed. Capacitive voltage detecting system to verify safe isolation from supply. Operation is only

BUS BARS

Home BUS BARS Advantages Our bus bar insulation system offers an alternative to cables routed in parallel and enclosed metal bus bar



trunking, especially for the



35KV High Voltage Busbar Tubing , Heat Shrink Tubing

35kV high voltage busbar heat shrink tubing is widely used in the insulation protection of high-voltage switchgear busbars, thanks to its outstanding insulation

Busbars , Electrical Busbars & Copper Busbars , RS

Here, at RS we have a comprehensive range of Busbars supplied to you from industry-leading brands including Schneider Electric, Siemens, ABB, Eaton, and Legrand. As mentioned before busbars are



Switchgear 35 kV «Volga» (PROEKT-ENERGO)

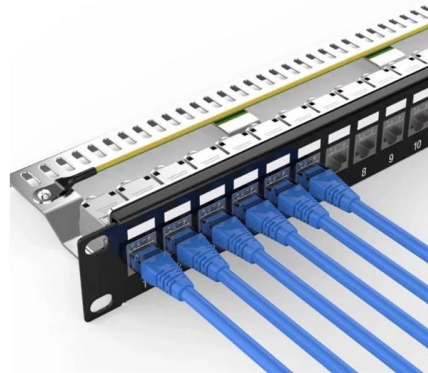
Adaptation to existing equipment. We develop drop-in panels to interface with legacy busbars. Why work with us Lower staffing costs. Documentation is clear to mid





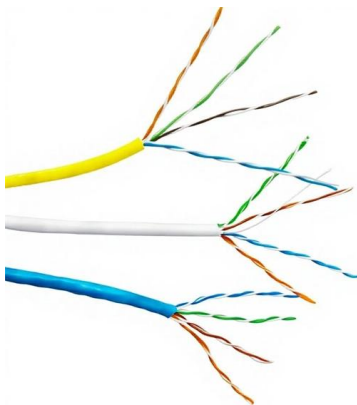
35kV Copper Busbar Cable Branch Box

The 35kV copper busbar cable branching box is a high-voltage distribution device used in urban grid cable modification projects. It is designed for outdoor, indoor,



Busbar Connection System Top busbar system (35kV) 35kV SU

35kV top busbar connector used in GIS system switchgear busbar connection system, mainly by the T-joint, cross connector, shield bus composition, to achieve the switchgear of the insulated, fully



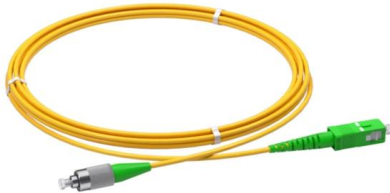
Advantages and Disadvantages of Double-Busbar Configuration in

Advantages and Disadvantages of Double-Busbar Configuration in Substations A substation with double-busbar configuration employs two sets of busbars. Each power source and each outgoing



Comprehensive Guide to 35kv Busbar Sleeve Installation

Learn the essential steps, materials, tools, and tips for effective 35kv Busbar Sleeve Installation in high-voltage electrical systems.



Busbar systems 0,4-35kV -- UNIGRON

Busbar systems 0,4-35kV Current rating: up to 6300A Voltage class: 10, 24, and 35 kV Aluminum and copper conductors Protection degree: IP55 and IP68

35kV F Busbar system

12-35kV 1250A Busbar connector Apply to the cabinet connection of 12-35kV 1250A RMU. Adopt the 35kV 2# Inner cone socket. Meet for the 1250A current requirements .



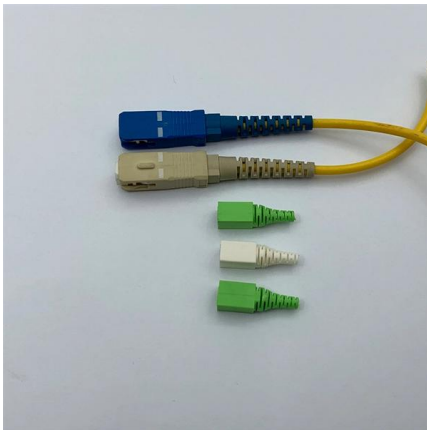
Busbar Systems in India , Types, Advantages

Discover what a busbar system is and its role in efficient power distribution. Learn about copper and aluminium busbar types, designs, advantages, and industrial



GIS NXPLUS Catalogue EN

Vacuum circuit-breaker Three-position disconnecter Busbar, module coupling Current transformers Voltage transformers Horizontal pressure relief duct Panel connection with outside cone Installation



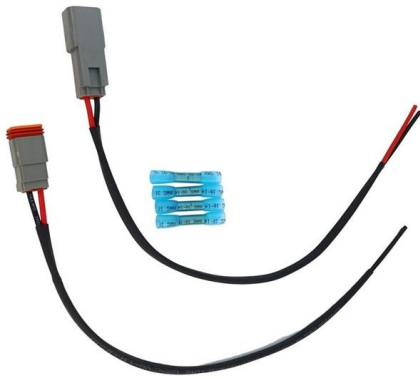
Circuit-Breaker Switchgear Type NXAIR H up to 36 kV, up to 31

Functions such as establishment of the isolating distance, as well as feeder and busbar earthing, can be completely controlled from remote Use of maintenance-free vacuum circuit-breakers Control cables

P635AB P935AB 35kV Apparatus Bushings

Richards 35 kV 600A (P635AB) and 900A (P935AB) Deadbreak Apparatus Bushings are Medium Voltage accessories utilized in equipment such as Transformers to provide a mating interface for





Functional Specification for 15 kV, 25 kV, or 35 kV Underground

There shall be provisions for mounting at least one fault indicator for each equipment bushing. Bushings shall be deadfront type for use with separable connectors conforming to IEEE Std 386(TM)

35kV High Voltage Switchgear Installation and Engineering

1. Personal protective equipment: such as safety helmets, insulated gloves, non-slip shoes, etc., to ensure the personal safety of the staff in the course of operation.
2. Fire fighting



DUWAI HB3

It is suitable for anti-corrosion and insulation protection of busbars and electrical

35KV heat shrink bus bar tubing BH-BBT-35KV

Applications: BH-BBT-35KV 35KV heat shrink bus bar tubing provides high resistance to tracking and arcing and used to enhance the insulation properties





35kV Copper Busbar Cable Branch Box

It is designed for outdoor, indoor, or underground installations, and primarily serves to connect power cables to equipment like substations, load switchgear, ring

2CDC446001D0201

Busbar systems and installation accessories
When connecting aluminum conductors, ensure that the contact surfaces of the conductors are cleaned, brushed and treated with grease.



ES310

6.6kV and 11kV Single Busbar Indoor Switchgear (Cable Connected) Electricity North West Limited. Registered in England & Wales. Registered No. 2366949. Registered Office: Borron Street,

EHV substation layouts for busbar systems (up to 400 kV)

Busbar Layouts In this publication, a serious attempt has been made to cover the basic requirements and illustrations containing typical layout for



35kV RMU Busbar Failure Due to Installation Errors

35kV RMU busbar insulation failure analysis: improper installation causes, fault identification process, and prevention strategies for power stations.



200 A and 600 A, 15, 25, and 35 kV junction bars for separable

General Eaton designs its Cooper Power™ series junction bars for vault or apparatus applications and can be used for looping, tapping and sectionalizing. They are fully shielded, submersible, resistant to



Busbar

In electric power distribution, a busbar (also bus bar) is a metallic strip or bar, typically housed inside switchgear, panel boards, and busway enclosures for



Contact Us

For datasheets, pricing, or custom telecom energy solutions, please visit:
<https://www.koskolong.co.za>