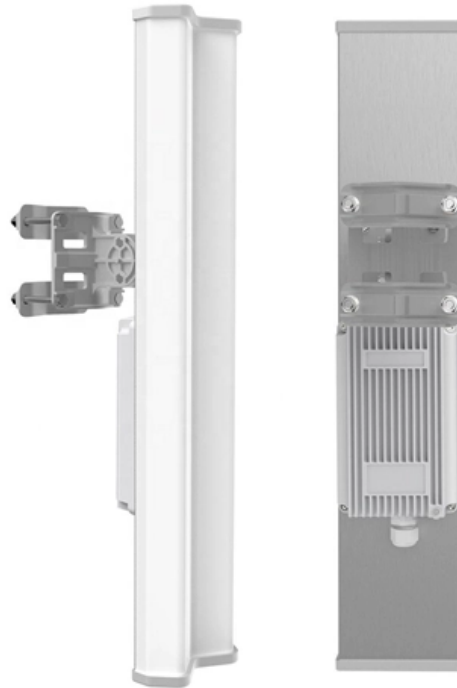




Adam Tas Corridor Energy

4-channel relay module with optocoupler





4-channel relay module with optocoupler



HiLetgo 12V 1 Channel Relay Module with Optocoupler Isolation

HiLetgo 12V 1 Channel Relay Module with Optocoupler Isolation Support High or Low Level Trigger : Buy Online at Best Price in KSA - Souq is now Amazon.sa: Everything Else Keep the item in its

Robocraze 4-Channel Relay Module Board , 5V Relay

Product description Robocraze 4-Channel Relay Module Board , 5V Relay Module with Optocoupler for boards compatible with Arduino



4 Channel Relay Module With Optocoupler , Bluepack

A 4 Channel Relay Module with Optocoupler is an electronic board designed to allow a low-power control signal (typically from a microcontroller like Arduino,

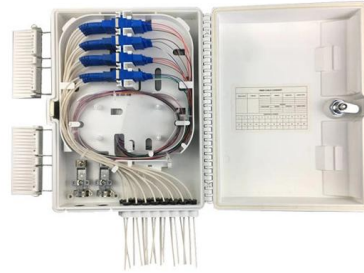


Amazon Best Sellers: Best Solid State Relays

Best Sellers in Solid State Relays #1 AEDIKO 4pcs DC 12V Relay Module 1 Channel Relay



Board with Optocoupler Isolation Support High or Low Level #2



24V 4-Channel Relay Module Switch Optocoupler

Enhance control capabilities with the 24V 4-Channel Relay Module. Featuring optocoupler isolation and compatibility with microcontrollers and PLCs, this



5V Dual Channel Relay Module with Optocoupler for PIC AVR DSP ARM

Autoradio Stereo ISO Kabelbaum Stecker Adapter Kabel für Toyota Camry Corolla 86. Rot 12MM Feder 365MM MotorradStoßdämpfer hinten Für Honda XL600 V Für Kawasaki. 1 Piece 5V



High-Performance 12V Relay Module with Fault-Tolerant Optocoupler

Unlock the full potential of your electronic projects with our sophisticated High-Performance 12V Relay Module with Fault-Tolerant Optocoupler Isolation. Genuine Relay: Utilizes a high-quality relay with a





1-channel 5V 30A High/Low Level Optocoupler Relay Module

1 channel 5V relay module with optocoupler, NO, up to 30A, with selectable High or Low trigger. 3.3-5V compatible for Arduino and ESP.



5V 16 Channel Relay Module with Optocoupler Protection Low

IN STOCK: best prices on 5V 16 Channel Relay Module with Optocoupler Protection Low Level Trigger, STYM0512-GS08851.

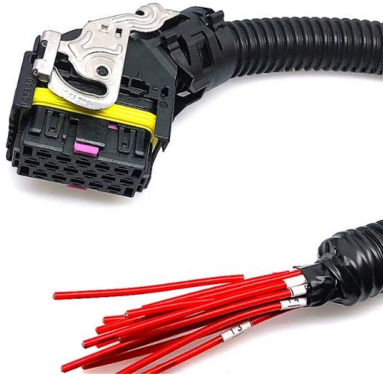
1 2 4 6 8 Way 5V12V24V Relay Module with Optocoupler Isolation

Product descriptions from the supplier Report abuse Specification item value Place of Origin None Brand Name other Model Number KY-019 Type Relay module Description 1/2/4/6/8-channel 5V/12V/24V



DIYables 4-channel Relay Module 5V for Arduino, ESP32, ESP8266

DIYables 4-channel 5V relay module for Arduino, ESP32, ESP8266, and Raspberry Pi. Optocoupler isolation, NO/NC contacts, and selectable



Yizhet 5V 8 Channel-Relay, DC 5V 230V Relay Shield

Yizhet 5V 8 Channel-Relay, DC 5V 230V Relay Shield Module Control Board with Optocoupler for Raspberry Pi Arduino PIC AVR MCU DSP ARM TTL Logic Visit



Amazon : 2 Channel Relay Module

4 PCS 5V 2 Channel Relay Module with Optocoupler Isolation, Relay Board with High/Low Level Trigger Jumper, 250V/10A AC or 30V/10A DC Load, Fault-Tolerant Design



4 Channel 5V Relay Module with Optocoupler

A 4x5V Opto-Isolated Relay Module is a board that contains 4 relays, each of





4 Channel Relay Module, 5V Low High Level Trigger, 30A High Power

About this item ?High Power Control?: Features 4 channels with 30A relays capable of handling AC250V or DC30A loads, supporting versatile automatic control applications. ?Enhanced Anti

DIYables 4-channel Relay Module 5V for

DIYables 4-channel 5V relay module for Arduino, ESP32, ESP8266, and Raspberry Pi. Optocoupler isolation, NO/NC contacts, and selectable



2CH Active H/L 3V OptoCoupler Relay Module

This is a 2 (two) channels universal 3.3V relay module because it can be configured as high or low triggered (Logic High or Low). With each relay rated at 250VAC,

8 Channel 12V Relay Module with Optocoupler Isolation for

8 Channel Relay Module with Optocoupler Isolation Blue Board PLC Relay Module for Control (12V) Features: Support all microcontroller control.



Optocoupler relay module, 1 channel, 12V, 30A, adjustable level

1 channel 12V relay module with optocoupler, supports up to 30A and allows High or Low Level triggering. Ideal for controlling AC/DC loads with LEDs.



5V Four-Channel Relay Module

Following are the major components present on the four-channel relay module, we will get into the details of this later in the article. 5V relay, terminal



4 Channel 5V Relay Module with Optocoupler

Featuring four independent relays, optocoupler isolation for safety, and LED indicators for easy monitoring, it's compatible with Arduino, Raspberry Pi, and





Amazon : 3.3v Relay

Alinan 10pcs 1 Channel 3V/3.3V Relay High Level Driver Module Optocoupler Relay Module Isolated Drive Control Board for ESP8266 Development Board Add to cart



Amazon : 4 Channel Relay Module

2pcs 4 Channel Relay Module with Optocoupler Isolation, 4.5-36V Wide Voltage, -40°C to +85°C, 10A Load, High/Low Level Trigger, Microcontroller Compatible Add to cart

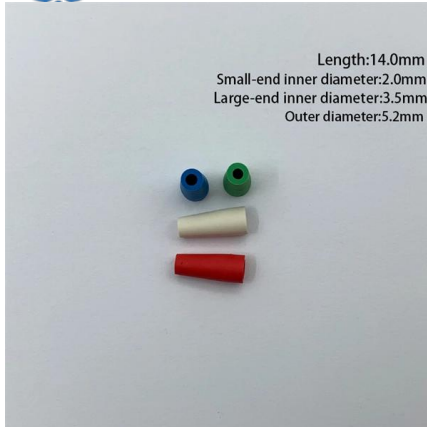
4-channel relay module 5V with optocoupler low-level

Microcontroller compatible board with 4 relays for max. 50V AC / 5A or 30V DC /



PENGLIN 1 x 4 Channel 5 V Relay Module with Optocoupler High

The Rel comes with a 4 (single) channel 5V activation relay ready to control 250VAC at 10A. Additional insulation with optocoupler at the front end of the controller and the activation logic for relays can be



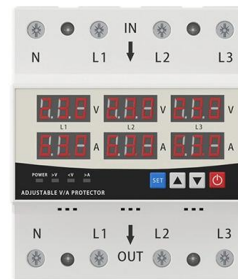
8-channel relay module, with optocoupler, low level, 5V

8-channel 5V relay module with optocoupler, low level actuation, for Arduino and automation. Switches up to 250VAC 10A, with NC NO COM terminals.



LED DISPLAY PANEL CURRENT STATUS CLEARLY VISIBLE

IT CAN CLEARLY SHOW THE CURRENT STATUS AND VOLTAGE STATUS, WITH EFFICIENT OPERATION AND RAPID RESPONSE.



KEAcvise 4-Pack 5V 1-Channel Relay Module

About this item Control Equipment The single-channel relay module employs a high-quality DC5V relay and SMD optical isolator, supporting high/low level triggering and widely used for controlling various

Contact Us

For datasheets, pricing, or custom telecom energy solutions, please visit:
<https://www.koskolong.co.za>