



Adam Tas Corridor Energy

48-Port Gigabit Optical Fiber Aggregation Switch





48-Port Gigabit Optical Fiber Aggregation Switch



48-port 10G/25G L3 Aggregation Fiber Switch with 8 100G Uplinks

Zyxel CX4800-56F high-density 100G/25G Layer 3 aggregation switch with Nebula cloud, 4.0 Tbps capacity, and high-availability system design.

Cisco C1300-48T-4G, 48-Port Gigabit Managed Switch with 4x Gigabit

Description Product Details Boost your clients' network performance with 48 high-speed Gigabit Ethernet ports, enabling seamless data transfer for demanding business applications. Enhance network



D-Link DBS-2000-52 52-Port Cloud Switch , Projectors Austral

The D-Link DBS-2000-52 is a powerful 52-port Gigabit Ethernet cloud-managed switch designed for small-to-medium businesses and enterprise environments. Featuring 48 x 10/100/1000BASE-T ports



208889

Full L2+ managed Ethernet aggregation /core fiber switch with 48* 10/100/1000M RJ45 ports and 4*1/10G SFP+ fiber slot ports, Built-in 60W



48-Port L2 Managed Gigabit Fiber Switch, 44x 100/1000 SFP, 4x

Produktinformationen für 48-Port L2 Managed Gigabit Fiber Switch, 44x 100/1000 SFP, 4x Combo RJ45/SFP 44x 100/1000Mbps SFP Slots 4x 100/1000Mbps Combo (SFP + RJ45) SFP Slots

48-Port L2 Managed Gigabit Fiber Switch, 44x 100/1000

Ensure proper earthing to avoid electric shocks. Avoid overloading as this can lead to overheating and short circuits. Check that the housing is undamaged and that



C1300-16P-2G Cisco Ethernet 16 Ports Manageable Switch

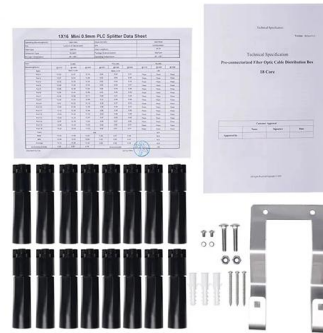
Cisco C1300-16P-2G Ethernet 16 Ports Manageable Switch Gigabit Ethernet 1000Base-X 3 Layer Supported Modular 2 SFP Power Optical Fiber. Excellent Refurbished with 1 Year Replacement





48 Port Switches -- Streamline Your Network

A 48 port switch can be suitable for certain roles within a data center, such as ToR or edge aggregation. They're not typically used as core switches in large-scale data

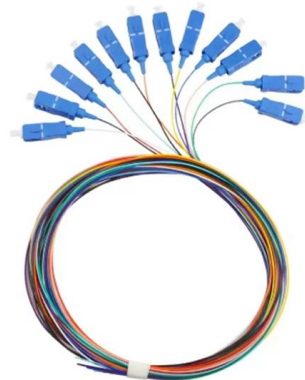


D-Link 48-port Gigabit Smart Managed Switch with 4 x 10G SFP+

The DGS-1250 Series switches support 24 or 48 x 10/100/1000BASE-T ports, with each switch also supporting an additional 4 x 10G SFP+ ports for optical connections using multimode or single-mode

Cisco C1300-24XS Catalyst 1300 24-Port SFP+ 4x10GE

CISCO C1300-24XS Catalyst 1300 C1300-24XS Manageable - Gigabit Ethernet, 10 Gigabit Ethernet - 10gbase-x, 1000base-t - 3 Layer Supported - 49.02 W Power



Best 10Gb Switch for SMB in 2025: Unlock Next-Gen Network

What Is a 10Gb Switch? A 10 Gigabit Ethernet switch is a network device that connects multiple endpoints at 10 Gbps speeds, enabling ultra-fast data exchange within local area networks.



MokerLink 48 Port Gigabit Managed Switch, 4x10G

G48410GSM is an enterprise-level L3 switch based on high-performance hardware architecture. It realizes port high density of 1U device, and the host solidifies 4

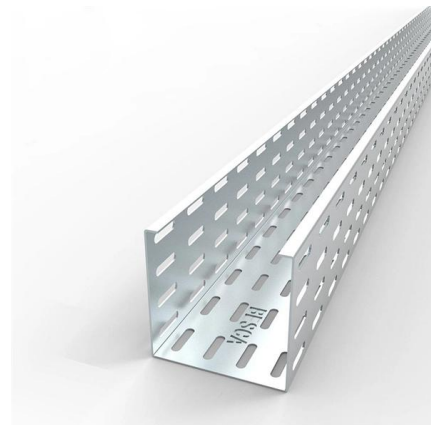


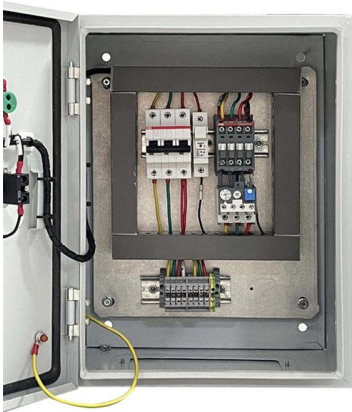
Cisco MDS 9148T 32-Gbps 48-Port Fibre Channel Switch Data Sheet

High performance: MDS 9148T architecture, with centralized nonblocking arbitration, provides consistent 32-Gbps low-latency performance across all traffic conditions for every Fibre

7520 , Extreme Networks

The Extreme 7520 are purpose-built 48-port 10Gb and 48-port 25Gb switches designed for high-performance aggregation and core applications.





48-Port L2 Managed Gigabit Fiber Switch, 44x 100/1000

Product information for 48-Port L2 Managed Gigabit Fiber Switch, 44x 100/1000 SFP, 4x Combo RJ45/SFP 44x 100/1000Mbps SFP Slots 4x 100/1000Mbps Combo

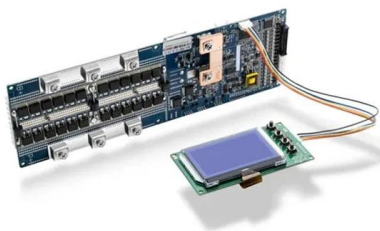
Campus Switches RG-CS85-48SFP4XS-D 48-Port 1GE SFP Layer 3

Aggregation switch for small and medium-sized campus networks, with four 10G uplink optical ports for high-speed data transmission; 48 x 1GE SFP ports, providing high-speed network experience for



RBG-F4808M3-AC

Explore the RBG-F4808M3-AC a Layer 3 managed all-fiber Gigabit switch with 48 SFP and 8 10G ports. Redundant power - buy now for high-density networking!



Used Cisco CBS250-48T-4X 48-Port Gigabit Smart Managed Switch

The Cisco CBS250-48T-4X-NA Refresh is a 48-port Gigabit smart managed switch with 4x 10GbE SFP+ uplinks, ideal for small businesses, branches, SMB networks, and enterprise edge deployments. Part



S5850-48XM8C 48-Port 10Gb Multigig Switch

The S5850-48XM8C is the upgraded version of the S5850-48T4Q, featuring 100G uplink ports that can operate at 40G or be split into 4x10G/25G ports, higher flash memory, and a larger packet buffer.



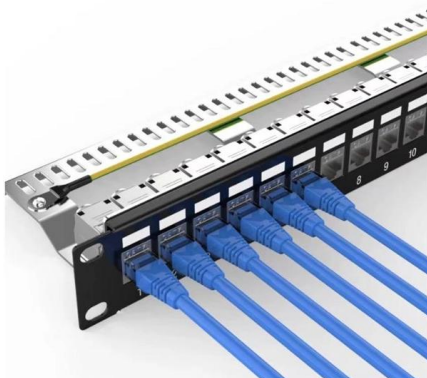
30-Port Lite Layer 3 Stackable Managed Gigabit Switch

The D-Link DGS-3130 Lite Layer 3 Stackable Managed Switches are a Gigabit access layer solution specifically designed to connect end-users in enterprise and metro Ethernet access networks. The



48-port 10G/25G L3 Aggregation Fiber Switch with 8 100G Uplinks

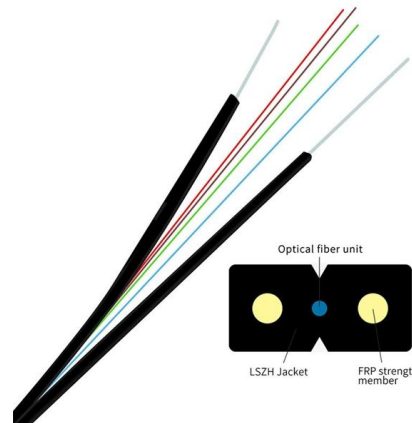
This Switch is engineered for robust network redundancy. Its 2-unit physical stacking enables a redundant ring that preserves data integrity even if one switch fails.





Ubiquiti Store United States

SFP & Fiber SFP cables, modules, and 10G RJ45 adapters for full optical networking.



COREMICRO NETGEAR M4300-52G-PoE+ 48-Port Gigabit

NETGEAR XSM4348FS is built for network environments where dense fiber connectivity matters more than copper access, and where long-term serviceability is part of the design. Based on the source

RG-S5750C-48SFP4XS-H, Enterprise-Class

Applied to the aggregation layer of large networks, the core of small and medium



48-Port Gigabit SFP+ 4-Port 10G SFP+ L3 Managed

UTP5650GS-L3 is a 48-Port Gigabit SFP+ 4-Port 10G SFP+ L3 Managed Ethernet Switch. It is a full fiber stackable routing switch with fixed, built-in 10GbE uplink



48-Port 10G Ethernet L3 Stackable Fiber Switch with 2x

QSFPTEK S7300-48X2Q4C L3 aggregation switch is designed with 48x 10G

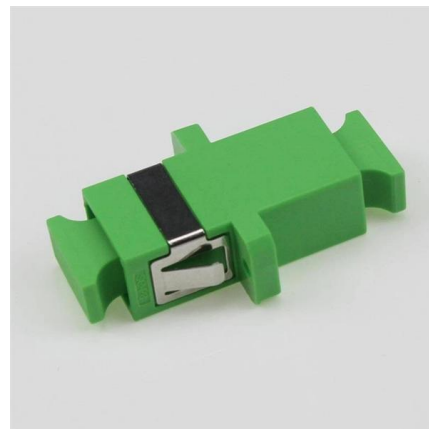


48-Port Gigabit SFP+ 4-Port 10G SFP+ L3 Managed

The switch is 48-Port Gigabit SFP+ 4-Port 10G SFP+ L3 Managed Ethernet Switch. It is full fiber stackable routing switch with fixed, built-in 10GbE uplink ports. The

48-Port 10G Ethernet L3 Stackable Fiber Switch with 2x

10G Optical Fiber Switch with 2x 40GE and 4x 100GE Uplinks for a Variety of Client Types 10G SFP+ ports for access switches, 40G/100G uplinks for aggregation



Contact Us

For datasheets, pricing, or custom telecom energy solutions, please visit:
<https://www.koskolong.co.za>