



Adam Tas Corridor Energy

551 Fiber Optic Sensor





Overview

FX-551-C2 Panasonic Industrial Automation Fiber Optic Sensors Digital fiber sensor, Cable type, NPN output datasheet, inventory, & pricing. (Note): When set to LONG, U-LG, HYPR, IP-F or IP-R, the time range cannot be set to 1/10 ms. The new Panasonic FX-551 digital fiber sensor series significantly improves stability and operation ease. Pricing and Availability on millions of electronic components from Digi-Key Electronics. Please add this item to cart to request a quote or contact us at for product availability. See other products in this category: Fiber-Optic Sensors PANASONIC, optical fiber amplifier PANASONIC * All prices are net prices (without VAT) and do not include transport costs, which will be added in the order.



551 Fiber Optic Sensor



FX-551-C2 PANASONIC

See other products in this category: Fiber-Optic Sensors PANASONIC, optical fiber amplifier PANASONIC. * All prices are net prices (without VAT) and do not include transport costs, which will

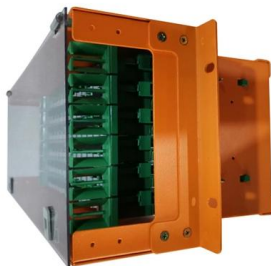
US Fiber Optic Sensor Market Size, Trends & Forecast 2035

US Fiber Optic Sensor Market is predicted to reach 2696 US\$ Million, at a 10.15% CAGR by driving industry size, share, top company analysis, segments research, trends and forecast report



4 INSTALL MORE AMPLIFIER OF SERIES CONNECTION TYPE

INSTRUCTION MANUAL Digital Fiber Sensor Amplifier FX-551Series ME-FX551 No.0058-72V Thank you very much for purchasing Panasonic products. Please read this Instruction Manual carefully and



Panasonic FX-551 Fiber Sensor

The Panasonic FX-551 Fiber Sensor stands out with its long-distance detection capability, delivering precise and stable performance across

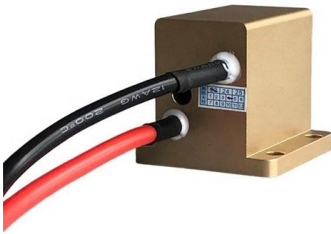


extended ranges. Engineered for industrial environments that



FX-551-C2

Panasonic [FX-551-C2], Digital Fiber Sensor FX-550, Part number detail page. Detailed specification of is here.



Standard Type Digital Fiber Sensor FX-551 SERIES

FX-551 SERIES For technical / application support
Contact Ramco Innovations today!



FX-551-C2 Panasonic Industrial Automation , Mouser

FX-551-C2 Panasonic Industrial Automation Fiber
Optic Sensors Digital fiber sensor, Cable type,
NPN output datasheet, inventory, & pricing.





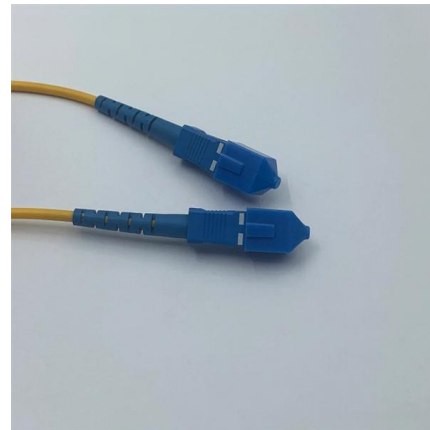
FX-551P|Digital Fiber Sensor FX-550

Panasonic [FX-551P], Digital Fiber Sensor FX-550, Part number detail page. Detailed specification of is here.



FX-551-C2

Digital fiber sensor amplifier (Red LED) with 2m cable - Panasonic / SunX (FX-551 series) - Supply voltage 12Vdc-24Vdc - 1 x digital output (NPN open-collector / 24Vdc / 100mA) - Red (660mm)



FX-551-C2 Panasonic Industrial Automation Sales

Order today, ships today. FX-551-C2 - Fiber Amplifier Sensor Amplifier Bracket Mount from Panasonic Industrial Automation Sales. Pricing and Availability on



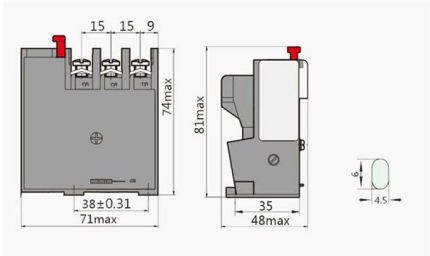
Panasonic FX-551 Series

The Panasonic FX-551 series of fiber optic sensors has 3x the emission power to improve stability, and 1.6x longer sensing range than conventional models.



Panasonic FX-551 Fiber Sensor

Panasonic FX-551 Fiber Sensor - Global Reach, Reliability, and Integration Recognized as an FX-551 Global Market Sensor, it meets international industrial standards and is trusted worldwide. Serving as



FX-551-C2 Panasonic Industrial Automation Sales

FX-551-C2 - Fiber Amplifier Sensor Amplifier Bracket Mount from Panasonic





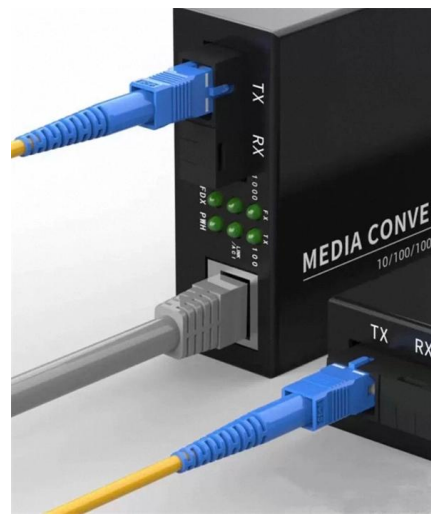
Standard Type Digital Fiber Sensor FX-551 SERIES



Ample sensing distance even with thin fiber The sensing range of the thin reflective type fiber is about 1.6 times longer than that of a conventional product (the sensing range of the standard reflective type)

Panasonic fiber amplifier FX-551-C2 Optical Proximity

Sensor360 provides professional information on the PANASONIC FIBER AMPLIFIER FX-551-C2 optical proximity sensors for KERNTech, covering its



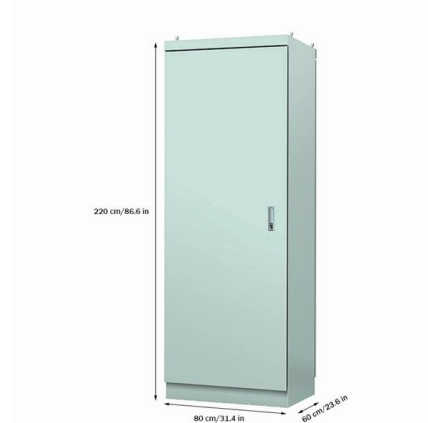
FX-551-C2 PANASONIC

PANASONIC FX-551-C2 , Sensor: optical fiber amplifier; NPN; IP40; Connection: cables; 2m - This product is available in Transfer Multisort Elektronik. Check out our wide range of products.



What Are Fiber Optic Sensors and How to Choose the

What is a fiber optic sensor used for? Their applications are extensive, ranging from verifying part positioning in factories with industrial fiber



Standard Type Digital Fiber Sensor FX-551 SERIES

Significantly improved stability and operation ease thanks to the industry's top* emission power and enhanced versatility! longer than conventional models! Stable detection! MODE NAVI uses three



FX-551-C2-HT Digital NPN Output Fiber Optic Amplifier Sensor

LGYMSZSS FX-551-C2-HT Digital NPN Output Fiber Optic Amplifier Sensor : Amazon.ca: Industrial & Scientific Fields with an asterisk * are required Price Availability

50KW modular power converter



- Flexible Configuration**
 - Modular Design, Expanding as Required
 - Small/light, Wall-Mounted
 - Installed in Parallel for Expansion
- Powerful Function**
 - Support PV+ESS
 - Grid Support Equipped with SVG Technology
 - On-Grid and Off-Grid Operation
- Reliable Protection**
 - Outdoor IP65 Design
 - Sufficient Protection Functions Equipped

FX-551|Digital Fiber Sensor FX-550

Panasonic [FX-551], Digital Fiber Sensor FX-550, Part number detail page. Detailed specification of is here.





FX-551

Digital fiber sensor amplifier (Red LED) - Panasonic / SunX (FX-551 series) - Supply voltage 12Vdc-24Vdc - 1 x digital output (NPN open-collector / 24Vdc / 100mA) - Red (660nm wavelength) beam -



China Fiber Optic Sensor Market Size, Share & Overview 2035

China Fiber Optic Sensor Market is projected to reach 664.98 USD Million, at a 10.22% CAGR by driving industry size, share, top company analysis, segments research, trends and forecast

FX-551 for Sale

Buy FX-551, the ideal DIGITAL FIBER SENSOR, CONNECTOR for your needs. Quality, reliability, and performance come together in this essential component. Order now!



FX-551

FX-551 series Functions Digital fiber sensor amplifier (Red LED) Interference prevention function OFF-delay/ON-delay timer (0.1ms-32s) One-shot timer Wavelength 660 nm Connection type Pre



Contact Us

For datasheets, pricing, or custom telecom energy solutions, please visit:
<https://www.koskolong.co.za>