



**Adam Tas Corridor Energy**

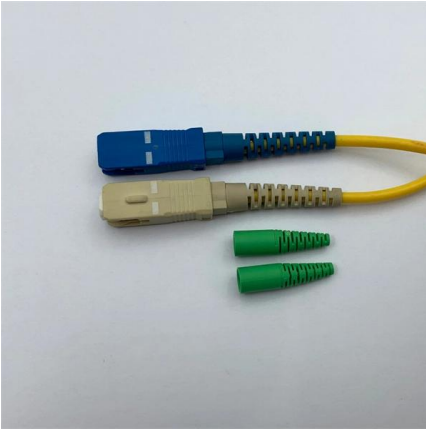
# **Access layer switches belong to**





## Access layer switches belong to

---



### Understanding the Hierarchical Switch Layers: Access

The three-tier switch hierarchy -- Access, Distribution, and Core -- is not just a technical blueprint, but a strategic decision-making framework for IT

### Difference between layer-2 and layer-3 switches

Layer 2 switches operate at the data link layer, forwarding data based on MAC addresses, while layer 3 switches route traffic using IP addresses.



### Understanding the Role of an Access Switch in Your

Explore the crucial role of an access switch in your network. Learn how it connects end-users and devices via Ethernet, enhancing overall performance.

### Layer Access Networking Essentials: Best Practices and

In large enterprises, access layer networking ensures multiple departments and devices stay

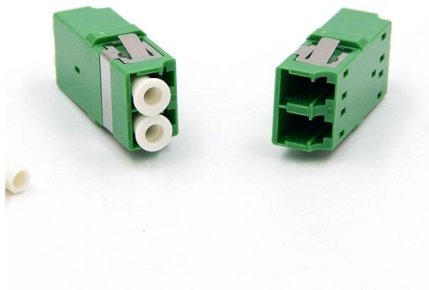


connected. Using managed switches and advanced security devices



### 1.1.1.5 Access, Distribution, and Core Layers

The distribution layer interfaces between the access layer and the core layer to provide many important functions, including: Aggregating large-scale wiring closet networks Aggregating Layer 2 broadcast



### Understanding the Differences Between Layer 2 and

For decades there were switches, and then there were routers. It was obvious that switches performed the switching, and routers did the routing. But in the past few



### L2 vs L3 Switch: How to Choose for Your Access Layer

This article breaks down the differences between L2 and L3 switches in the access layer, analyzes key decision factors like network scale and complexity, and finally provides a practical





## Core, Distribution, and Access Layer Explained with

Core, Distribution, and Access Layer Explained with Examples Ever tried explaining core, distribution, and access network layers to someone who



## Access Layer Security Design

Access Layer Security Design One of the most vulnerable points of the network is the access edge. The access layer is where end users connect to the network. In the past, network administrators have

## SMB Network Design: Core vs. Distribution vs. Access Switches

The access layer switch sits at the edge of the network, acting as the direct on-ramp for all end-user devices. This is where your laptops, VoIP phones, printers, and wireless access points



## Access, Distribution, and Core Layers Explained

Switches in this layer are called access switches. End devices connect to the LAN through the access switches. In other words, an access



## What Is an Access Switch? The Definitive Edge Network Guide

Learn what an access switch is, how it works at the network edge, why PoE and port density matter, and how Wi-Fi 7 and IoT change access-layer requirements.



## Understanding Network Hierarchical Structure with Core and Access Layers

In the realm of network engineering, understanding the hierarchical structure of networks is crucial for designing robust and efficient systems. The core and access layers play pivotal roles in

## Two-tier and three-tier switch architectures

The aggregation or distribution switches are the intermediary layer between the core and access layers. The lowest tier is the access layer, which is used to connect all of the various end devices, such as



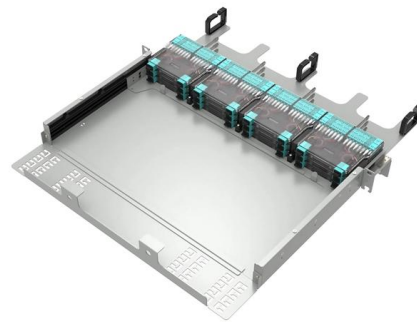


## Layer 2 vs Layer 3 Switch: What's the Difference? , Auvik

A network switch is a fundamental piece of any network, so it's critical that you as an IT professional understand the role of a switch in a properly

### The relationship between access layer switches,

Usually the part of the network that directly faces users to connect or access the network is called the access layer, which is equivalent to the basic



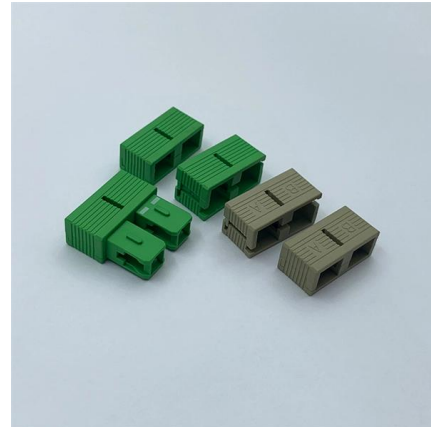
### Core Switch vs Access Switch , Definitions and Key Differences

Access switches are layer 2 switches that operate at OSI model layer 2 (data link layer).



### Access vs. Distribution vs. Core Switch Comparison Guide

Each layer is served by specialized switches, with the access switch connecting end-user devices, the distribution switch aggregating traffic and enforcing policies, and the core switch acting as the high

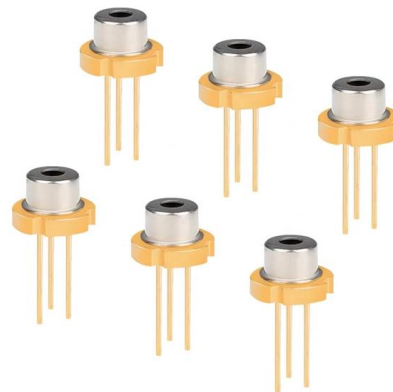


## Core Switch vs. Distribution Switch vs. Access Switch

The access layer consists of layer 3 switches, which take routed and switched data packets from the distribution switches and then route them to the access devices

### Access Layer

The access layer is the last layer of three-tier architecture of a datacenter. The actual servers are connected to this layer. The access layer communicates with its upper layer using several switches



## What is an access switch and how to select access switches?

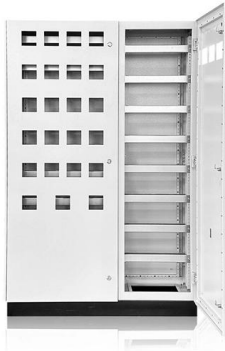
What is an access switch? Learn the features and applications, and know how to select the right access switch for your network needs. Ruijie Networks' access switches here for you.





## Choose access layer switch for the access layer network

What is the main function of an access layer?  
What does an access layer switch do? How to choose the right network switch for the access layer?



## How to Choose the Right Access Layer Switch?

Learn 8 key factors--ports, PoE, speed, security & TCO--to choose the right access layer switch and future-proof your network. Read the guide now.

## What is the Access Switch?

As the physical entity of the access layer, access switches are responsible to connect both to the distribution layer switches and the end devices as well as



## Contact Us

---

For datasheets, pricing, or custom telecom energy solutions, please visit:  
<https://www.koskolong.co.za>