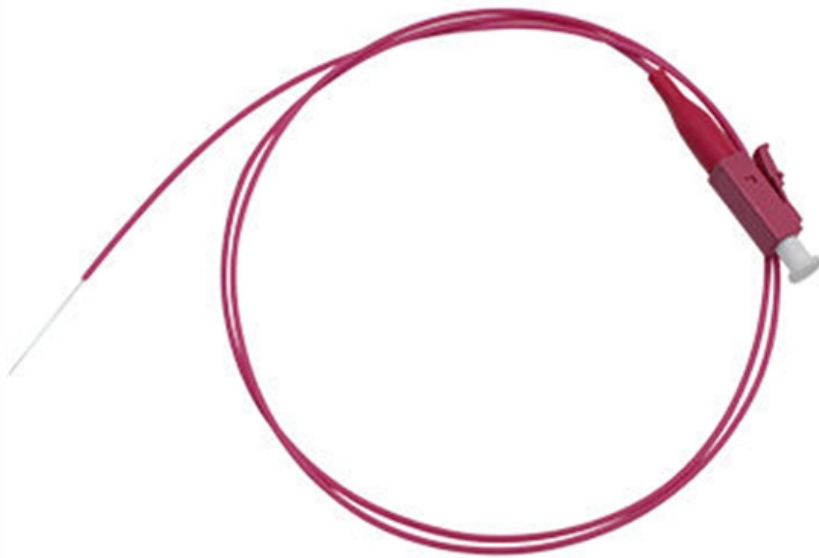




Adam Tas Corridor Energy

Add PLC module to distribution box





Add PLC module to distribution box

The Basics of Reading PLC Panels and Wiring Diagrams

On the other hand, the output module is used by the PLC to control output field devices like relays, solenoid valves, motors, pumps, and electric



Fiber Distribution Boxes for plc 1*8 splitter

16 Ports Distribution Box Fiber optic fiber optical terminal box, termination box is applicable PLC Splitter/ coupler to a terminal access links FTTH access system.



Din Rail Enclosures / Boxes: 2, 3 & 4 Way Modules

Enclosure Distribution Insulated 4 Module IP65
Part Number: 2500263363 MPN: ECW4 Add to Cart Add to Cart

Adding Input/Output Modules (boxes)

In the tree view of the I/O configuration, the various input and output modules (boxes) are



now added below the configured fieldbus cards, configured and, if necessary, linked to the variables of a PLC



EN_AI361_QSG_A_A2

Insert the top and bottom locking connectors of the PLC module into the slots of PLC expansion module as shown in Figure 2. Press the locking connector upward and downward to make sure that the

Inserting PLC modules

You can break an I/O module into as many pieces as you want at insertion time. It is great for high-density modules that do not fit into a single ladder column. Use the Allow spacers/breakers option in



AutoCAD Electrical 2021 Help , Inserting PLC modules , Autodesk

Select, insert, and annotate a PLC module. You can break an I/O module into as many pieces as you want at insertion time. It is great for high-density modules that do not fit into a single ladder column.



Adding Modules

See Base PLC Variables: Create, Import, and Export for creating base PLC I/O Tags & Tag import. Follow the steps below to add expansion modules in an open project.



Configuring Hardware and Communication Connections STEP 7

When you select a module in the Hardware Catalog and this module can be inserted in a configured module rack, all slots available for the insertion of this module are highlighted in color.

Components of PLC

Components of PLC A PLC consists of the required quantities of the following types of modules or cards, mounted on a common physical support and



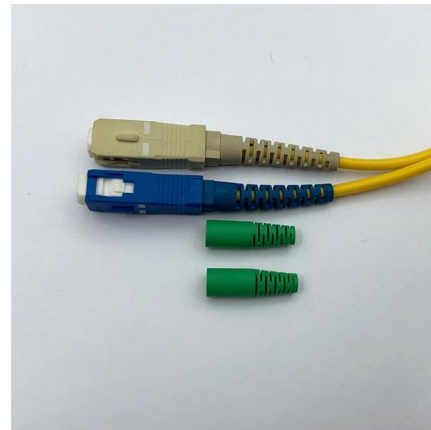
How to Build the Right PLC Control Cabinet?

Learn how to build a PLC cabinet with our comprehensive guide. Discover tips for selecting materials, designing a layout, and ensuring safety.



How to Configure Distributed IO in a PLC Project?

In this article, we will show how to configure distributed IO devices in our PLC project using Siemens ET200S module using Tia portal.

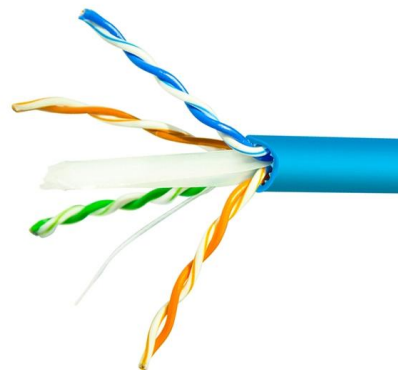


Guide to PLC Cabinets: Types, Layout, Wiring

Learn the essentials of designing and wiring PLC control cabinets, including component selection, cooling, wiring tips, and safety standards.

PlantPax Distributed Control System Reference Manual

Read this document and the documents listed in the additional resources section about installation, configuration, and operation of this equipment before you install, configure, operate, or maintain this





PLC Cabinets: Design, Protection, and Best Practices

Learn what a PLC cabinet is, key design features, NEMA/IP protection ratings, and best practices for automation and CNC applications.

Adding Input/Output Modules (boxes)

The various input and output modules (boxes) are now added and configured and/or linked with the variables of the PLC projects or other run-time systems (e.g. of an

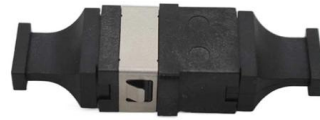


Insert a proprietary PLC module

In this video, author Shaun Bryant takes you through how to insert a proprietary PLC module in to a wiring ladder in an electrical drawing.

How to connect the PLC Arduino to the Distribution Panel

In this post, we are going to see how to connect our industrial controller Arduino -PLC- to the Distribution Panel in a regulated way, following the



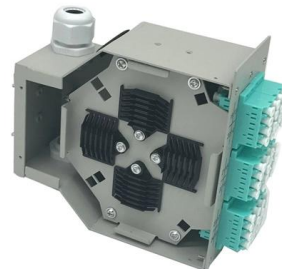
Solution Square : PLC IO and Expansion Module Setup

This guide demonstrates how to detect and add an IO or expansion module to a PLC setup.



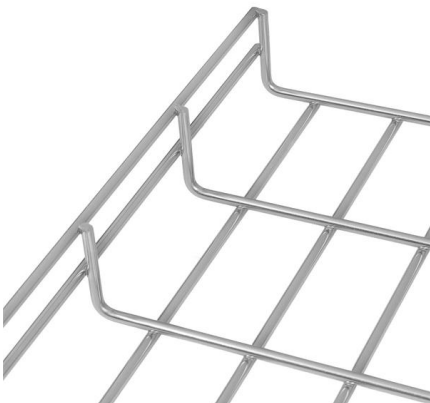
AutoCAD Electrical: Add a new PLC module

As we know there are many PLC manufacturers in the automation market. The common brands are AB, Siemens, Omron, Mitsubishi, Modicon. In



How to Build a PLC Cabinet: Step-by-Step Wiring Guide

Learn how to build a PLC cabinet with expert tips on wiring, safety standards, component selection, and testing. Ensure efficiency & compliance with





PLC Panel - Components, Working, Types, Uses

PLC panel consists of 2 types of components: the power and the control elements. Let's have a look at each part of the programmable logic



PLC-5 I/O Configuration (Documenting Modules)

How to set up the PLC-5 I/O Configuration, document modules in your project, and see a full I/O list of any slot.

How to Configure Distributed IO in a PLC Project?

The added IO module is not assigned to PLC. Another way to see that the Distributed IO module is not assigned to any controllers is that there are no



A Guide to Wiring Input and Output Devices for PLC

Output devices are typically connected to the PLC using relays or transistor modules. Proper wiring of input and output devices for a PLC ensures efficient



Adding Modules

XG5000 allows the user to synchronize the installed expansion module of an online XEM CPU. This will automatically add the modules to the project. I/O variables will be automatically created for most



Contact Us

For datasheets, pricing, or custom telecom energy solutions, please visit:
<https://www.koskolong.co.za>