



**Adam Tas Corridor Energy**

# **Adding an optical module to Huijue 2960x**





## Adding an optical module to Huijue 2960x

---



### How to stack Catalyst 2960S and 2960X

Talks about how to stack Cisco Catalyst 2960S and 2960X. Cisco designed the 2960-X to be backwards compatible with the 2960-S to allow

### Catalyst 2960-X and 2960-XR Switch Hardware

Install the FlexStack-Extended Fiber module and the fiber-optic cable. Install the FlexStack-Extended Hybrid module and the required fiber



### Catalyst 2960-X Switch Hardware Installation Guide

Comprehensive guide for installing and setting up Cisco Catalyst 2960-X switches, covering hardware requirements, configurations, and troubleshooting tips.

### Solved: 2960X Switch Stacking with fiber

Hi All, I am trying to stack 2960x "WS-C2960X-48LPD-L" switches in two different racks,



and racks are far away from each other. ( lets say 4 Meters

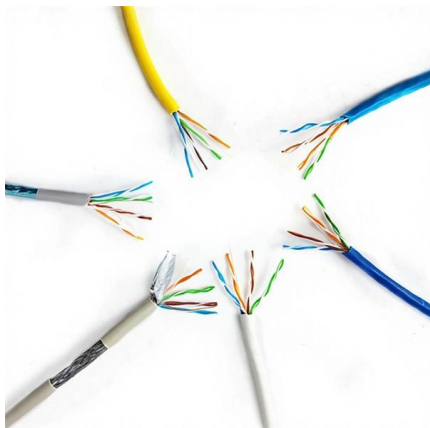


## CISCO CATALYST 2960-X SERIES HARDWARE

Catalyst 2960-XR Switch Rear Panel 1 FlexStack-Plus module slot and 4 PS OK LED cover Page 17  
The Cisco RPS 2300 (model PWR-RPS2300) supports the

## Switch Installation & nbsp; [Cisco Catalyst 2960-X Series

Switches powered on after the 1-minute timeframe do not participate in the election.  
Power off a switch before you add it to or remove it from an existing switch stack.



## Cisco Catalyst 2960 Series Switches

Cisco Catalyst 2960 Series Switches - Some links below may open a new browser window to display the document you selected.



## Catalyst 2960-X Switch Hardware Installation Guide

Install the FlexStack-Extended Hybrid module and the required fiber-optic/FlexStack cables. Note All the FlexStack modules are hot-swappable and can be inserted while the switch is powered on.



## How to Configure Cisco 2960X SFP Modules?

Configuring Cisco 2960X SFP modules involves verifying compatibility, installing the modules correctly, and configuring the interface using the Cisco IOS command-line interface (CLI) to

## Catalyst 2960-X Switch Hardware Installation Guide

The FlexStack-Extended Fiber module has two SFP+ module ports. The SFP+ port enables long-reach stacking using standard multimode LR (300m)



## Catalyst 2960 Switch Hardware Installation Guide

Catalyst 2960 Switch Hardware Installation Guide - Troubleshooting [Cisco Catalyst 2960 Series Switches] - Cisco Systems



## Catalyst 2960-X Switch Hardware Installation Guide

Install the FlexStack-Extended Hybrid module and the required fiber-optic/FlexStack cables. Note All the FlexStack modules are hot-swappable and can be inserted while the switch is powered on.



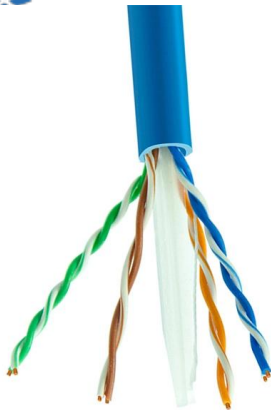
## Adding 2960-X to existing 2960-S stack

I am not having luck adding a newer 2960-X to and existing 2960-S stack Only 3 switches here. Existing stack: WS-C2960S-48TS-L - Switch priority 14 (c2960s-universalk9-mz.152-2.E4.bin)

## Switch Installation & nbsp; [Cisco Catalyst 2960-X Series

This encoding provides a way for Cisco to identify and validate that the module meets the requirements for the switch. For information about installing, removing,



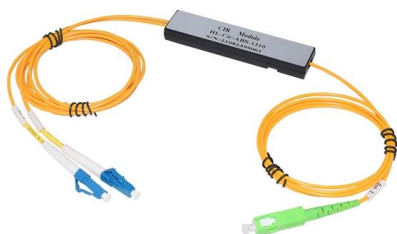


## 10gig SFP+ as an access port for 2960x

I have a need to have a 10gigbit access port on a 2960x 24ts-l running 15.2(6). With the proper SFP+, is it possible to configure a port this way?

### Connector and Cable Specifications [Cisco Catalyst]

Each port must match the wave-length specifications on the other end of the cable, and the cable must not exceed the stipulated cable length. Copper 1000BASE-T



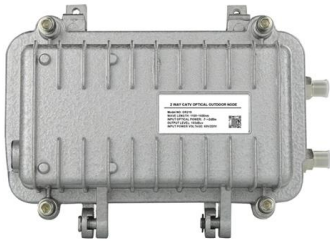
### Troubleshooting & nbsp; [Cisco Catalyst 2960-X Series]

For fiber-optic cables, verify that you have the correct cable for the distance and port type. Make sure that the connected device ports both match and use the same

### Catalyst 2960-X and 2960-XR Switch Hardware

For fiber-optic cables, verify that you have the correct cable for distance and port type. Ensure that the connected device ports match and use





## Catalyst 2960-X Switch Hardware Installation Guide

Power off a switch before you add it to or remove it from an existing switch stack. For conditions that can cause a stack master reelection or to manually elect the stack master, see the

## Catalyst 2960-X and 2960-XR Switch Hardware Installation Guide

Cisco Catalyst 2960-X and 2960-XR Switches now support QSFP-4X10G-AOC5M, the 40GQSFP to four 10G SFP+ direct attach breakout Active Optical cable assembly. Each port must



## Catalyst 2960-X Switch Hardware Installation Guide

For fiber-optic cables, verify that you have the correct cable for distance and port type. Ensure that the connected device ports match and use

## How to Configure Cisco 2960X SFP Modules?

Understanding SFP Modules and Cisco 2960X Switches Small Form-factor Pluggable (SFP) modules are hot-swappable input/output transceivers that plug into SFP ports, linking the



## Cisco Catalyst 2960-X Series Switches

Cisco Catalyst 2960-X Series Switches - Some links below may open a new browser window to display the document you selected.



## Catalyst 2960-X Switch Hardware Installation Guide

For cabling specifications, refer to the following notes: Cisco SFP and SFP+ Transceiver Module Installation Notes Cisco 40-Gigabit QSFP+ Transceiver Modules Installation Note Cisco



## Catalyst 2960-X Switch Hardware Installation Guide

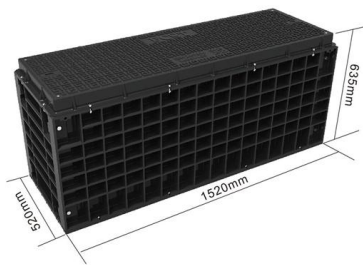
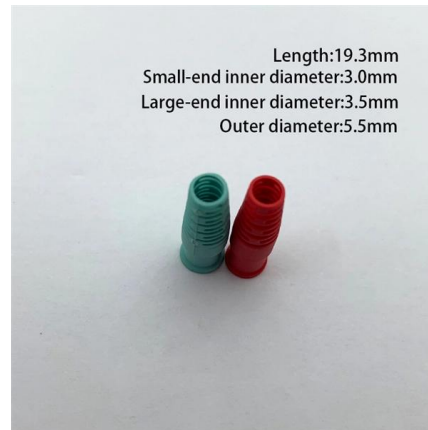
Install the FlexStack-Extended Fiber module and the fiber-optic cable. Install the FlexStack-Extended Hybrid module and the required fiber-optic/FlexStack cables.





### Solved: 2960x stack

Hi, we have 2x 2960x 48 port switches configured as a stack. I now need to add another member. I know I simply disconnect one of the existing flexstack cables and then add the other



### 10gig SFP+ as an access port for 2960x

Solved: I have a need to have a 10gigbit access port on a 2960x 24ts-I running 15.2 (6). With the proper SFP+, is it possible to configure a port this way?

### How to add a 2960x to a stack?

Below is a comprehensive guide to help you add a 2960-X switch to your existing stack effectively. Understanding the Stack Before adding a new switch, it's crucial



### Catalyst 2960-X Switch Hardware Installation Guide

Cisco Catalyst 2960-X and 2960-XR Switches now support QSFP-4X10G-AOC5M, the 40GQSFP to four 10G SFP+ direct attach breakout Active Optical cable assembly. Each port must



**needed sfp fiber module  
configuration in 2960 x series  
switch**

The other end of the fiber connected with sfp  
fiber modules to srw2024-k9-eu switch.



## Contact Us

---

For datasheets, pricing, or custom telecom energy solutions, please visit:  
<https://www.koskolong.co.za>