



Adam Tas Corridor Energy

Advantages of Huawei Core Switches





Overview

Key Advantages of Huawei Switches Proven Enterprise Reliability: Trusted globally in mission-critical networks. Comprehensive Product Range: Scales from 8-port access to 400G data center core switches. This document provides campus networks typical configuration examples and feature typical configuration examples. Selecting a data center core switch is no longer just a hardware decision—it is a long-term investment that directly impacts performance, operational efficiency, scalability, and total cost of ownership (TCO). With the rapid evolution of data centers driven by hybrid cloud, AI workloads, and. ■ Security Features: Includes advanced security protocols like ACLs, firewalls, and encryption.



Advantages of Huawei Core Switches



Selecting the Optimal Huawei Switch: Efficient and Reliable Enterprise

This guide examines Huawei's enterprise switch offerings, highlights their core performance benefits, and assists businesses in identifying the ideal model based on specific

Why Does Your Network Need a Huawei Core Switch? Is Outdated

Huawei core switches provide the speed, security, and scalability to support AI-driven workflows, edge computing, and other emerging technologies. Companies clinging



Huawei Switches: Comprehensive Guide And Insights

Huawei switches provide a robust, scalable, and cost-efficient solution for modern networking needs. Whether you're operating a small business, managing a large

Huawei Core Switch: Network's Beating Heart? Can Centralized

The Huawei core switch isn't a luxury--it's a strategic reset. By centralizing intelligence, it



cuts through the complexity of hybrid clouds, IoT sprawl, and shadow IT.



Features and Applications of Core Switches

By selecting Core Switch devices that align with specific needs, businesses can achieve high-speed, reliable data forwarding, ensuring efficient network operation. Core Switches also

Huawei Fixed Switches Overview

Like Cisco switch, Huawei switch is a big family that contains two product lines with different functionality: switches for campus corporate networks



Huawei Switches: Comprehensive Guide And Insights

Overview of Huawei Switches Huawei switches are among the leading solutions for networking and connectivity, offering advanced features for enterprises, small





Huawei S6700 Series Switches Product Brochure

The S6700 can be used in Huawei's sustainable data center solution, which offers four major advantages: evolution, availability, pooling, and visualization. As shown in the following figure, the



CloudEngine Series Data Center Switches

Huawei CloudEngine series switches are high-performance cloud switches designed for next-generation data centers and high-end campus networks. The series

Huawei CloudEngine S16700 Series Flagship Core Switches Datasheet

Huawei CloudEngine S16700 series switches (S16700 for short) are next-generation modular core switches designed for high-end campus networks in the fully-wireless era.



Native AC Solution: Core Switches Function as the Gateway for Wired

Core switches set up a CSS that functions as the core of the entire campus network to implement high network reliability and forwarding of a large amount of data.



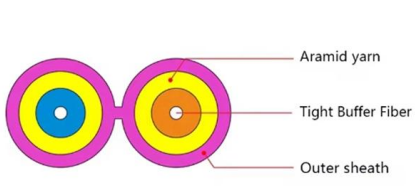
CloudEngine S6700 Series Switches Product Description (V600)

CloudEngine S6700 series Ethernet switches (S6700 for short) are next-generation 10GE fixed switches developed by Huawei. They can operate as access switches for 10GE servers and as core switches



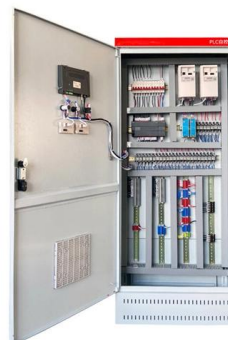
Switches

Switches After more than 20 years of unremitting efforts and stable development, Huawei provides extensive experience in Ethernet switches. With multiple



CloudEngine S12700E Series Switches Product Description

Product Characteristics Huawei CloudEngine S12700E series agile switches are core switches designed for next-generation campus networks. Using a fully programmable switching architecture, the





Huawei Switch Models: Overwhelming Options or Strategic Advantage

Navigating Huawei switch models feels like walking into a tech labyrinth: the S5700, CE8800, and S6730 series all promise blazing speeds and ironclad security, but choosing the wrong one can

Native AC Solution: Core Switches Function as the Gateway for Wired

In addition, core switches are configured with the native AC function to manage APs and transmit wireless service traffic on the entire network, implementing wired and wireless convergence.



Why Is the Huawei CloudEngine 12800 Core Switch a Game

In today's hyper-connected digital landscape, the backbone of any enterprise network relies on one critical component: the core switch. The Huawei CloudEngine 12800 Core Switch isn't just another

Choosing the 2025 Best Huawei Switch: Efficient and

Summary: Managed switches provide advanced control for large networks, while unmanaged switches are ideal for simple environments with



CloudEngine S12700E Series Switches Datasheet

CloudEngine S12700E Series Switches Huawei CloudEngine S12700E series switches are new core switches designed for next-generation high-quality campus networks. These purpose-built switches

Cisco vs Huawei Core Switch: Which Offers Better ROI

Compare Cisco and Huawei core switches for data centers in terms of ROI, CapEx, OpEx, performance, ecosystem, compliance, and supply chain factors to make an informed procurement decision.



What are the differences between Huawei S12700

It offers a variety of advantages, including excellent performance, high reliability, comprehensive security, intelligent operation and maintenance, and



Huawei CloudEngine S12700E Series Switches

Brand-New Flagship Core Switches CloudEngine S12700E is a brand-new flagship core switch in Huawei's CloudEngine S series switch family. Designed with an industry-leading distributed switching



9 Query Commands for Huawei Switches

In the modern network environment, switches, as the core equipment of the network, are responsible for key tasks such as data forwarding, traffic

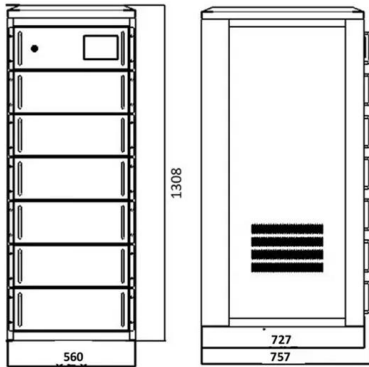
Choosing the 2025 Best Huawei Switch: Efficient and

This article explores Huawei's enterprise switch portfolio, outlines key performance advantages, and helps organizations select the best model based



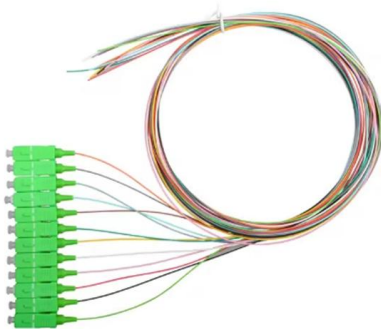
Data Center Switches

Data Center Switches CloudEngine Data Center Switches -- Ethernet switches widely used in diverse applications and in different network sizes, in both data



CloudEngine S12700E Series Switches Product Description

With this technology, a physical network with core/aggregation switches, access switches, and APs can be virtualized into one logical switch, offering the simplest network management solution.



(Video) Director Tech Talk: Introduction to HUAWEI CloudEngine

Huawei CloudEngine S16700 series flagship core switches are next-generation flagship modular core switches designed for high-end campus networks. They are designed to improve user experience,

Network Switches , Huawei Enterprise

Huawei campus switches are ideal for building future-proof campus networks with simplified management, high reliability, and service intelligence, across industries





Huawei Enterprise Support Community

We're sorry but web site doesn't work properly without JavaScript enabled. Please enable it to continue. Loading

Contact Us

For datasheets, pricing, or custom telecom energy solutions, please visit:
<https://www.koskolong.co.za>