



**Adam Tas Corridor Energy**

# **Afghanistan Spot SFP Optical Module 25G**





## Afghanistan Spot SFP Optical Module 25G

---



### 25GBASE-LR SFP28 1310nm 10km - Duplex LC Transceiver

The 25GBASE-LR SFP28 Optical Transceiver is a dual-fiber 25.8Gbps Small Form-Factor Pluggable SFP28 module for 25GBASE Ethernet. The SFP28 LR provides up to 10km of

### FAQs for 25G SFP28 Optical Transceivers

The small factor pluggable Transceivers (SFP28 Transceivers) is an optical module transceivers used for both telecommunication and data communication



### UniFi 25G Multi-Mode Optical Module

SFP28 transceiver that supports 25G connections up to 100 m using multi-mode fiber with a duplex LC UPC connector.

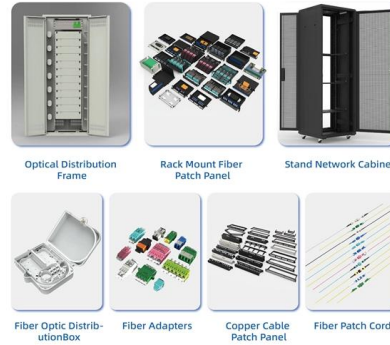
### 25G SFP28 Optical Transceivers , Transceiver Module

FS 25G SFP28 optical transceiver solutions offer



a wide variety of high-density and low-power connectivity options for 25 Gigabit Ethernet, telecom, and data center.

### An Extensive Library of Self-Developed Products

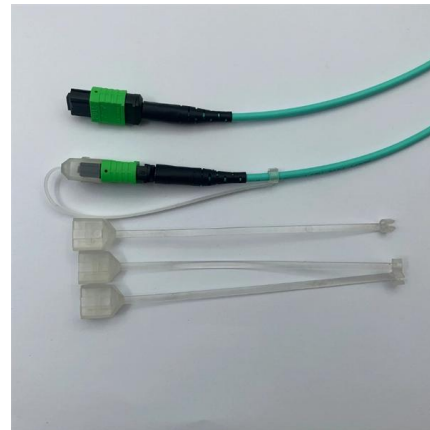


### 25G SFP28 Optical Transceiver , Fiber Optic Module Factory

A 25G transceiver module like SFP28 combines the compact size of SFP with upgraded electrical and optical interfaces for 25 Gbps operation. Compared to QSFP28, it consumes less power per port and

### 25G SFP28 Active Optical Cable

25Gb/s SFP28 Active Optical cable transceiver consists of several key components, including the LD driver, limiting amplifier, digital diagnostic monitor, VCSEL laser,



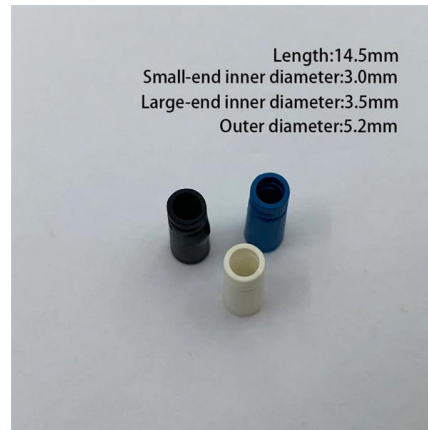
### SFP28 25Gbps 1310nm 10km Optical Module - Raiden

The SFP28 25G optical module is a high-performance transceiver designed for next-generation 25 Gigabit Ethernet applications. With advanced optical components



## Optimizing Network Upgrades with FS 25G SFP28 Modules

After comparing the key parameters of the 25G, 10G, 40G, and 100G optical modules in various network layers, we can clearly see the distinct advantages of the 25G solution in network



## What is SFP28-25G-ESR and Why Does it Matter

sfp28-25g-esr is a 25G optical transceiver offering fast, reliable data transmission and extended reach for modern network infrastructure.

## SFP28 25G

SFP28 modules provide high-performance network connectivity in a compact form factor. With data transmission speeds of up to 25 Gbps, these modules are ideal for demanding environments such as



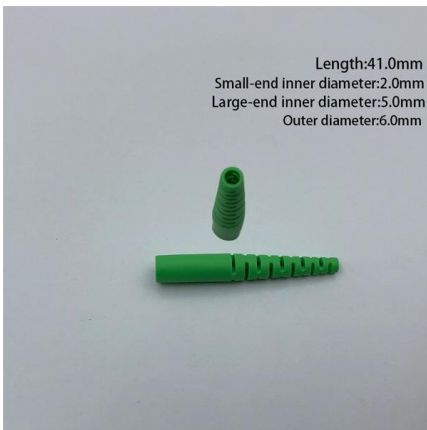
## 25G SFP28 LR Rx 10km Industrial Single-Receiver Optical Module

Description The Gigalight 25G SFP28 LR Rx 10km industrial single-receiver optical module (GSSR-SPO250-LRT) is designed for 25GBASE-LR Ethernet and CPRI/eCPRI Deep Packet Inspection



### **S2813010250F / SFP28 / 25GBase-LR**

Looking for a specific compatibility?  
S2813010250F is a high performance transceiver module for 25 Gigabit Ethernet data links over a single mode fibre pair. The maximum reach is 10km. The



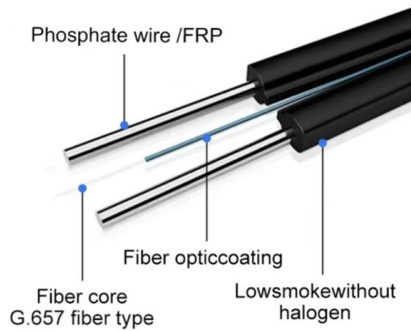
### **StarTech MSA-Compliant SFP-25G-LR-S SFP28**

The 25GbE multi-mode fiber module (SFP28) excels in bandwidth-intensive tasks such as virtualization, efficient data migrations, high-performance storage, high

### **25G SFP28 Transceiver**

QSFPTEK offers a 25G SFP28 high-performance Active Optical Cables integrated cable that can provide an ideal alternative solution for high-speed cables and short-distance SFP28 optical modules.



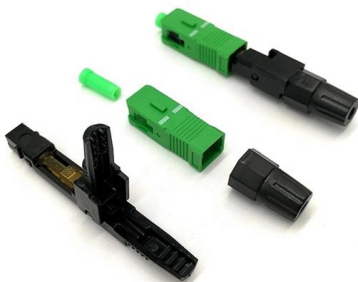


## **Arista Networks SFP-25G-LR Compatible 25Gb SFP28 Transceiver Module**

The optical interface uses duplex LC receptacle. This module incorporates Fibertronics proven circuit and DFB technology to provide reliable long life, high performance, and consistent service. This high

## **25G Optics , HPE Juniper Networking US**

All Juniper 25G optics are compliant with key industry standards and specifications for seamless interoperability in multivendor environments and qualified for use



## **MSA-Compliant SFP-25G-LR-S SFP28 Module, 25Gbps**

MSA-Compliant SFP-25G-LR-S SFP28 Module, 25Gbps Single Mode Fiber (SMF), 10km (6.2mi), LC Connector, 1310nm, MSA 25 Gigabit Optical Transceiver

## **25G SFP28 Optical Transceiver Modules , FiberMall**

FiberMall offers 25G Optical Transceiver Modules, which is compliant with the Multi-Source Agreement using Small Form-Factor Pluggable (SFP28) footprint.



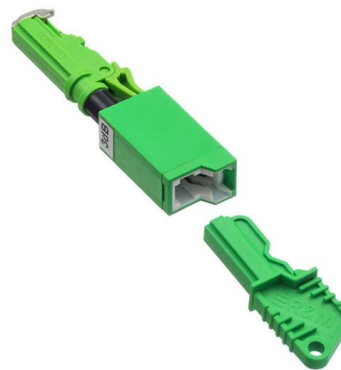
## 25G Single-Mode Optical Module

SFP28 transceiver that supports 25G connections up to 10 km using single-mode fiber with a duplex LC UPC connector.



## What Is an SFP Module? -- Complete Guide to SFP, SFP+ & SFP28

While an SFP28 module may physically fit into an SFP+ cage, 25G operation requires explicit host support, including the correct PHY, MAC, and firmware. In many cases, the module will either



## 25GSPON ONU SFP28 Optical Transceiver Module , Superxon

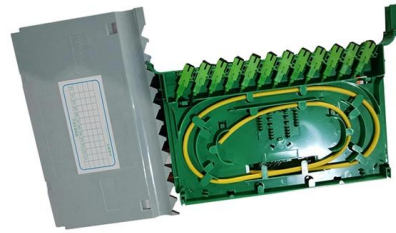
Superxon 25G ONU transceivers, compliant with SFP28 MSA, support single-fiber bi-directional data links with symmetric TX and RX rates of 25Gbps. Hot-pluggable, 3.3V, and high-sensitivity APD.





## Cisco 25 Gigabit Modules

The Cisco ® 25GBASE SFP28 (Small Form-Factor Pluggable) portfolio offers customers a wide variety of high-density and low-power 25 Gigabit Ethernet connectivity options for data center and high



## Ubiquiti 25G Multi-Mode SFP28 Optical Module UACC

Complete your network installation with this 25G Multi-Mode SFP28 Optical Module from Ubiquiti Networks. Featuring a duplex LC connector and 850nm TX and RX

## Understanding the SFP28-25G-SR Transceiver and Its

In this landscape, 25 Gigabit Ethernet (25GbE) has emerged as the sweet spot, offering a perfect balance of performance, cost, and power efficiency.



## Cisco SFP-25G-LR-S Compatible SFP28 Module,

Cisco SFP-25G-LR-S Compatible SFP28 Module, 25Gbps Single Mode Fiber (SMF), 10km (6.2mi), LC Connector, 1310nm, MSA 25 Gigabit Optical Transceiver



## 25G SFP28 Transceiver Module Types and Applications

25G Standard SFP28 Transceiver Module The SFP28 transceiver modules are key components in high-speed optical networks, offering versatile solutions for various distances and



## Everything You Need to Know about 25G Optics

The 25G SFP28 optical module is an optical module with a transmission rate of 25Gbps. It is a new Ethernet standard with many

## Contact Us

---

For datasheets, pricing, or custom telecom energy solutions, please visit:  
<https://www.koskolong.co.za>