



**Adam Tas Corridor Energy**

# **Aggregation Layer Switches and Border Routers**



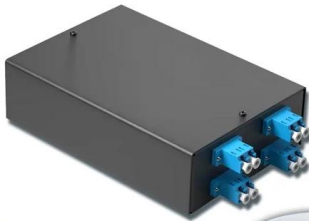


## Aggregation Layer Switches and Border Routers

---

4-port 8-core LC wall-mounted fiber terminal box (empty frame)

Surface painted    Scientific plate fiber    Cold-rolled steel plate



Lifetime quality assurance

Free shipping

Customizable for telecommunication

### What Is an Aggregation Switch and How to Choose?

An aggregation switch is a network device that consolidates traffic from multiple access switches, wireless access points, or other edge devices and

### AR (Aggregation Router)

An Aggregation Router (AR) is a critical networking device that plays an important role in modern network architecture. It is responsible for aggregating traffic from multiple lower-level

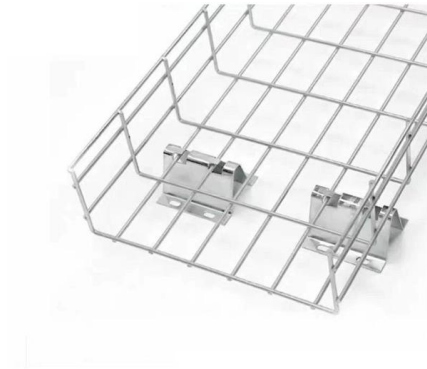


### UniFi Switching

Layer 3 Switching UniFi Layer 3 switches provide hardware-accelerated inter-VLAN routing, often replacing external routers. Reduce network congestion, streamline

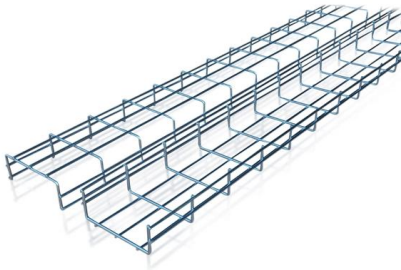
### Chapter4\_Oct19\_2011.ppt

Two key network-layer functions forwarding:  
move packets from router's input to appropriate router output



### **Cisco Catalyst SD-WAN Multi-Region Fabric**

Information About Route Aggregation on Border Routers and Transport Gateways Minimum releases: Cisco Catalyst SD-WAN Control



### **Aggregation switches and routers**

For this reason, we've delivered a data center-influenced standalone OLT architecture paired with non-blocking leaf-spine fabric and aggregation switching.



### **Everything You Need to Know About Aggregation Switch**

A: Ubiquiti UniFi is a brand of networking equipment, including aggregation switches, that offers high-performance and easy-to-manage solutions





## Layer 2 Leaf & Spine Design and Deployment Guide

These layer 2 links are bundled into Port-Channels and distributed across the two spine switches in a multi-chassis link aggregation group. Leaf-Spine interconnects require careful consideration to



## Understanding Switch Aggregation: A Comprehensive

QSFPTEK: How to Choose the Best Aggregation Switch?: This source provides a comprehensive guide on choosing the best aggregation switch,

## What is an Aggregation Switch? , Features and Practical Benefits

Additionally, the access switch includes user management features like address authentication, user authentication, and user information collection in addition to offering sufficient



## What Are Aggregation Service Routers (ASR)?

Aggregation services in routers and edge platforms help enable network edge routing. These devices combine traffic links at greater speeds to support the



## Core, Aggregation, or Access Switches? Choose the

Discover the crucial differences between core, aggregation, and access switches. Find out which type can best transform your network's

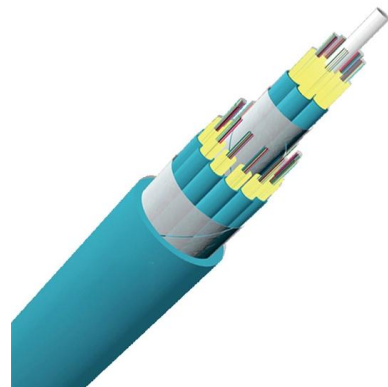


## Aggregation Routers

The AGR100 provides switching at Layer 2 or Layer 3 across 48 x 10 G ports and 6 x 100 G uplinks. Therefore it can be deployed either as a top-of-rack switch, as part

## What are link aggregation and LACP and how can I use

Unmanaged switches do not support link aggregation. What are the benefits of link aggregation? Link aggregation offers the following benefits:





## Aggregation Router

An 'Aggregation Router' is a device located in the services aggregation layer of a data center LAN that integrates important network services such as firewalls and server load balancers, allowing them to

## Aggregation layer , FortiSwitch 7.6.0 , Fortinet Document Library

This model allows the aggregation switches to easily accommodate thousands of devices passing through this layer while simplifying the design, maintenance, and operations. The following figure



## What Is an Aggregation Switch and How to Choose?

As the physical part of the aggregation layer, aggregation switches typically play a crucial part in the overall network architecture. So, what exactly is an aggregation

## SMB Network Design: Core vs. Distribution vs. Access Switches

Core Layer: The high-speed backbone, often connecting multiple distribution switches.  
Distribution Layer: The middle ground that aggregates access layer traffic, applying routing and



Focus creates quality products



## Aggregation switches and routers

The expected growth of gigabit and multigigabit services requires operators to architect network access scalability upfront. For this reason, we have delivered a

## What Are Aggregation Service Routers (ASR)?

What Are Aggregation Services Routers (ASR)? Aggregation services in routers and edge platforms help enable network edge routing. These devices combine traffic



## Router & Switch Layers: Enterprise Network Components , BizTech

The aggregation layer connects to the uplinks of the edge switches and is uplinked to the distribution layer toward the network core. Generally, network managers are moving away from in-closet



## In-depth analysis: What is an aggregation switch?

In many network constructions, we have all heard of switches. So do you really understand switches? Why are aggregation switches often overlooked?

LoRa handheld portable base station



## Data Center Network Switch Design

Redundancy and High Availability: Deploy redundant core switches, use dynamic routing protocols (such as OSPF, BGP) and link aggregation (LACP) to enhance network reliability.

## Data Center Design: Basic 3 Layers, Core, Aggregation,

Key Features of 3 layers design of Data Center: Data center network is divided into 3 standard three-layer structure. The layering is mainly based on the



## Datacenter Core and Aggregation Design

Introduction Datacenter design is based on a proven layered approach. The layered approach is the basic foundation of the DC design that



## What is an Aggregation Switch?

The aggregation switch is located in the middle of the network architecture, which is equivalent to a middle-level manager of a company. It



## LANCOM Tech Paper Two-Tier and Three-Tier Switch Architectures

A hierarchical switch network topology, with layers that each perform different functions and tasks, is therefore ideal for implementing a LAN infrastructure. This techpaper provides an overview of three

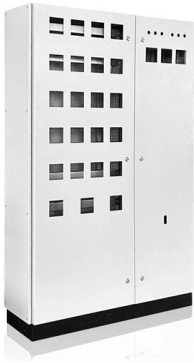
## INTELLIGENT AGGREGATION

As can be seen in the tables presented earlier, if there is substantial East-West traffic, and/or lower density of link utilization between the edge and core routers, then there is an economic benefit of



## Aggregation Switch

An aggregation switch refers to a type of switch used to connect multiple ToR switches to a core switch/router in a cloud data center network. It enables high-bandwidth aggregation ports to be



## Contact Us

---

For datasheets, pricing, or custom telecom energy solutions, please visit:  
<https://www.koskolong.co.za>