



Adam Tas Corridor Energy

Aggregation Switch QSFP





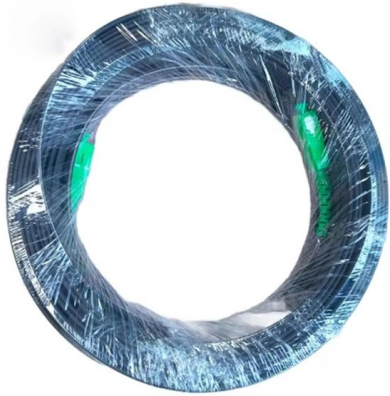
Overview

QSFP (Quad Small Form-factor Pluggable) is a high-density, multi-lane optical transceiver platform that aggregates four or more high-speed electrical lanes to deliver 40G, 100G, 200G, and 400G+ bandwidth per port. 4) as an example, this guide demonstrates the configuration methods for breakoutting and aggregating the QSFP interfaces of EXTREME switches: 1. Support comprehensive Layer 3 features with advanced L3 routing protocols support including OSPF, BGP, RIP, etc. I'm trying to work out how QSFP ports can be used in Meraki MS355 switches and can't find much about it in the documentation. More specifically: 1) Does the MS355 support "octopus" 4 x LC to 1 x QSFP+ breakout cables?

2) If I connect 4 x 1Gbps to a QSFP+ port, will the MS355 see this as 1 x 4Gbps. Enterprise SONiC based 32 port 100G QSFP28 aggregation core switch for aggregation spine architecture, which line rate L2 L3 up to 3. Mit UI Care verlängern Sie die Herstellergarantie von 1 Jahr auf insgesamt fünf Jahre und genießen exklusive Vorteile: Vorabaustausch Kostenlose Rücksendung UI Care Lizenz wird von ALLNET aktiviert UI Care-Schutz Ersatz anfordern Ihr Ersatz wird sofort versendet.



Aggregation Switch QSFP



QSFP, QSFP+, zQSFP, QSFP28 and QSFP56, QSFP

SHOP FEATURED PRODUCTS QSFP 112G Product TE Connectivity's (TE) QSFP 112G connectors and cages designed to support 112G-PAM4 signal modulation,

DCS-7260QX-64-F Arista 40GbE QSFP+ 2x SFP+ 64 Ports Ethernet Switch

This Ethernet switch integrates sixty-four QSFP+ 40GbE interfaces along with dual SFP+ uplink ports, enabling flexible connectivity options for aggregation, spine, leaf, and core switching deployments.



Top Optical Modules for POTN Deployment: SFP, QSFP, and OSFP

Low-power designs optimized for high-density switch front panels. Customizable labeling and wavelength options for integrators. Network planners can deploy LINK-PP QSFP28 modules for

SFP vs QSFP: Which Module Does Your Switch Need? (2025 Guide)

Struggling to choose between SFP and QSFP? Compare speed, density, and cabling costs side-



by-side. Discover the best use cases for SFP vs QSFP.



Solved: QSFP and link aggregation

I have 10Gbps uplink and want to aggregate 1Gbps links to provide a redundant uplink > 1Gbps. But in several cases I only have 6 fibre cores (ie: 3 x 1Gbps) and in other cases if I use SFP

48-Port 10G Ethernet L3 Stackable Fiber Switch with 2x 40G QSFP

Discover QSPTEK S7300-48X2Q4C full-10G ToR L3 switch! The 10Gb aggregation switch supports static routing, RIP, BGP, OSPF, oriented for high-performance computing, enterprise networks and



8 SFP 8 RJ45 Web Smart Industrial Fanless Switch for Outdoor Telco

8 SFP 8 RJ45 Web Smart Industrial Fanless Switch for Outdoor Telco Cabinet & Pole-Mounted 5G Node Aggregation SH-GML0808-P



Ubiquiti Switch full managed Layer3 54 Port o 6x QSFP28 o 48x

Product information "Ubiquiti Switch full managed Layer3 54 Port o 6x QSFP28 o 48x SFP28 o 19" o UniFi o ECS-Aggregation" Project notification at ubiquiti@allnet . 1.8 Tbps high-density 100G/25G Layer



SODOLA 8 Port 10G L3 Managed Switch, 8X10G SFP+ Interface, Link

When you click on links to various merchants on this site and make a purchase, this can result in this site earning a commission. Affiliate programs and affiliations include, but are not limited to, the eBay



D Link 10 Port Gigabit Smart Managed PoE+ Switch, 8x

Shop D Link 10 Port Gigabit Smart Managed PoE+ Switch, 8x PoE+ Ports (65W) + 2x Optical SFP Ports (DGS 1210 10P) Black products at Best Buy. Find low



Ubiquiti UniFi Switch Aggregation , Managed Layer 2 Switch

This compact managed Layer 2 switch offers eight 10G SFP+ ports and supports high-bandwidth links, making it ideal for aggregation switching to any UniFi device that deploys various interconnect



Link Aggregation with QSFP links on 5672UP

Yes, you can aggregate the 2 QSFPs together in a Portchannel. Just remember if the server has 10Gig SFP+ interfaces, you need a special cable with one side with multiple SFP+

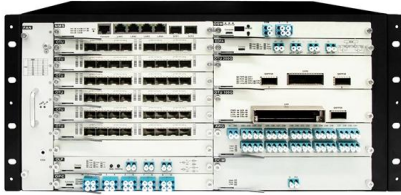
SFP vs SFP+ vs SFP28 vs QSFP: Výber správneho tvarového faktora

SFP/SFP+/SFP28 keep the smallest footprint per lane; QSFP provides higher aggregate bandwidth per cage--fewer cages for the same aggregate throughput but larger single-port cost. For rack/tile





Omada Aggregation 24-Port SFP Switch with 4 10GE



Omada Aggregation 24-Port SFP Switch with 4 10GE SFP+ Slots. As a 10G switch that seamlessly integrates into the Omada Software Defined Networking (SDN)

WAN aggregation through switch? : r/Ubiquiti

As long as the wan connections on the switch are in a separate vlan, that should work fine. In enterprise networks wan is often transported with vlans over switching.



Switch, 16-Port, 10 Gigabit Ethernet, SFP+, RJ45/SFP, QSFP+

Dieser 10G Aggregation Switch bietet zukunftssichere Glasfaser-Performance als übergeordnete Instanz in verteilten Netzwerken und stellt leistungsstarke 14 SFP+-Ports zur Aggregation von Access



RG-CS86-20XS4VS2QXS-D 20-Port 10/2.5GE (SFP+), Layer 3 Ruijie

Cost-effective Full 10GE Layer 3 Core/Aggregation Switch RG-CS86-20XS4VS2QXS-D Suitable for SME network core and large-scale network aggregation, 20 x 10GE ports and 4 x 25GE ports for



LANCOM XS-5116QF: LANCOM Systems GmbH

Dieser 10G Aggregation Switch bietet zukunftssichere Glasfaser-Performance als übergeordnete Instanz in verteilten Netzwerken und stellt leistungsstarke 14



S7600-24X2Q, Layer 3+ 24-port 10GbE Managed

Experience the QSPTEK S7600-24X2Q, a Layer 3+ aggregation switch. Each



SFP SFP+ SFP28 QSFP+ QSFP28: Fiber Module Form Factor Guide

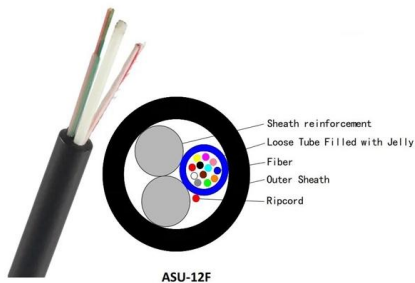
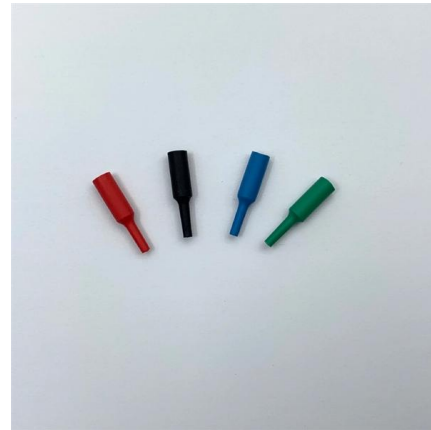
Learn the differences between SFP, SFP+, SFP28, QSFP+, and QSFP28 optical module form factors, including speeds, interfaces, and deployment scenarios.





32 Port 100G QSFP28 Core Switch Enterprise SONiC

Enterprise SONiC based 32 port 100G QSFP28 aggregation core switch for aggregation spine architecture, which line rate L2 L3 up to 3.2Tbps, Marvell

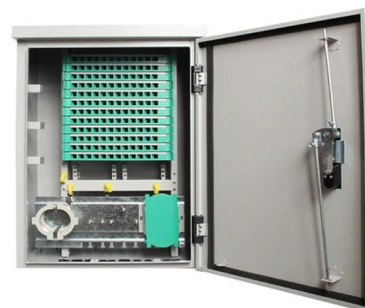


Shop Aggregation Switches with Competitive Pricing -

Aggregation switches serve as a critical component in network architecture, acting as intermediaries between access switches and core layers. They consolidate data

How To Configure Interface Breakout And Aggregate On Ruijie RG

Using the actual test on the EXTREME X690 Switch (Software Version: 22.4.1.4) as an example, this guide demonstrates the configuration methods for breakoutting and aggregating the



What is a 10G SFP+ Switch and How to Use It?

This 10G SFP+ managed switch operates at Layer 3, providing advanced network management features such as port mirroring, VLAN, static





Contact Us

For datasheets, pricing, or custom telecom energy solutions, please visit:
<https://www.koskolong.co.za>