



Adam Tas Corridor Energy

Aggregation Switch with 24 Ports Optical and Electrical





Overview

Features 24 10G SFP+ optical ports and 2 100G QSFP28 ports, with all ports supporting wire-speed forwarding to meet high-density access requirements for 10GE servers. WS9328GX 10Gb Layer 3 Managed Switch adopts high quality and high-speed network IC, offers 24*Gigabit Ethernet ports, 4*10Gb SFP+ ports, 1*console port, and 1*USB serial port. Perfect security control policy and CPU protect policy improve fault tolerance and ensure stable network operation and link. The VSU connects to peripherals through an aggregate link, realizing service switching in milliseconds upon a failure. DS-3E2500-HI series supports the combination of "Ethernet port + optical port" to meet networking requirements of various scenarios, which is convenient for users to build a flexible network.



Aggregation Switch with 24 Ports Optical and Electrical



24-Port Gigabit Optical Fiber Switch with 24 SFP Ports -

The GAOTek 24-Port Gigabit Optical Fiber Switch features 24 SFP ports, 92 Gbps switching capacity, 480 Gbps stack bandwidth, and supports up to 2000 wireless

Aggregation Switch 24-Port HSP-IO-24GE4XS-C2AH

Aggregation Switch 24-Port HSP-IO-24GE4XS-C2AH Overview: Fully Managed L2 and L3 Lite Stackable Switches All Gigabit Ethernet Access Ports with 10G Uplinks in a fixed 1U configuration



SODOLA 24 Ports 10G L3 Switch 24*10GE SFP

Each port delivers transmission speeds up to 10 Gigabit, providing a new generation of intelligent edge network solutions for large and medium-sized edge network

24-port Gigabit 4*10G SFP+ optical ports Layer 3 managed switch link

WS9328GX 10Gb Layer 3 Managed Switch adopts high quality and high-speed network IC,



offers 24*Gigabit Ethernet ports, 4*10Gb SFP+ ports, 1*console port, and 1*USB serial port.



Dahua L2+ 24 Port Aggregation Switch , ExpertElectrical .uk

Dahua L2+ 24 Port Aggregation Switch Features Hardened L2+ managed aggregation Switch 24GE+4 x GE/10GE SFP+ Switching Capacity: 128Gbps High lightning protection: Common/Differential mode



24-port Gigabit 4 optical ports Gigabit Layer 3 managed switch static

WS3028GM Layer 3 Gigabit Managed Switch supports 24 Gigabit Ethernet ports, 4 Gigabit SFP optical ports and 1 management port. The switch provides advanced network management features:



Aggregation/Distribution Switch for 24 SPF+ Ports

Hello, I need a Switch with 24x SPF+ Ports with 10Gbit. It should support Transceiver with Copper (1Gbit) and Fiber (10Gbit). The Connection is from 4x 10Gbit Core Uplink (6880) over the





Campus Switches RG-S6150-24VS8CQ-X 24-Port

The hardware supports dual stack for high-speed switching, catering to the requirements of campus network transition from IPv4 protocol to IPv6 protocol,



What is an Aggregation Switch?

24-port 10GbE Layer 3 aggregation network switch (including four 25G optical ports, backward compatible with 10G), 2 x 40G uplink ports It can be

24*Gigabit SFP 4*10G SFP+ 8*Gigabit Electrical/optical Combo 3

WS-5834GXF Managed Switch with 24 Gigabit SFP ports, 4*10G SFP+ optical ports, 8*Gigabit electrical/optical combo ports and 1 management port, provides advanced network management,



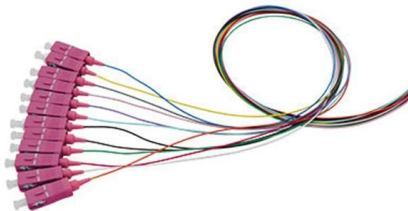
24-Port Gigabit Ethernet L3 Stackable Fiber Switch with

The S5300-24S8T6X is a Ethernet-managed aggregation switch with 24x GE SFP



24-Port 10G L3 Aggregation Switch Enterprise SONiC

Boasting 24×10GbE and 2×100GbE ports, the switch supports interface splitting via breakout cables, which helps enhance the efficiency of network resource usage



Ubiquiti SFP+ Guide: DAC vs. Fiber vs. RJ45 Selection

Tactical Advice: The Copper Heat Trap Port Staggering: If you must use RJ45 SFP+ modules, never place them in adjacent ports. Leave an empty slot between them to allow for passive

Switch Pro XG Aggregation

Professional-grade 32-port, Layer 3 Etherlighting(TM) switch for high-capacity 25G SFP28 connections.



Dahua 24 Port L2+ Managed Aggregation Switch

Dahua 24 Port L2+ Managed Aggregation Switch Features Hardened L2+ managed aggregation Switch 24GE+4 x GE/10GE SFP+ Switching Capacity: 128Gbps High lightning protection:



10g Uplink 24 Port L3 Managed Aggregation/Core Network Switch

Product Description 10g Uplink 24 Port L3 Managed Aggregation/Core Network Switch
Product Overview The JX24GE4TF-CSW-L3D-C series is a 10G uplink Layer 3 managed switch, featuring 24



AS5600-24GF4XF

AS5600-24GF4XF 28-Port Managed Gigabit Switch with 24-Port GSFP and 4-Port 10G SFP+ > High performance and reliability; easy to manage and maintain > 10

All-Optical 24-Port SFP Network Switch Layer3

It can be used as aggregation device in small and medium-sized campus





Aggregation Switches , Global , Zyxel Service Providers



Enhance your network with Zyxel's aggregation switches, offering advanced QoS, superior security, and a resilient design for seamless convergent services.

24-port Gigabit 4*10G SFP+ optical ports Layer 3 managed switch link

Based on Advanced security features and advanced quality of service (QoS), it can be used as a core distribution or access layer switch with high port density, and easy to manage. The managed 10G



Campus Switches RG-S5760C-24GT8XS-X 24-Port GE Electrical

Layer 3 GE Core & Aggregation Switch S5760C-24GT8XS-X Aggregation switch for small and medium-sized campus networks, with 8 x 1GE/10GE SFP+ uplink ports for high-speed data transmission; 24 x

DS-3E2528-HI-24T4F

DS-3E2500-HI series supports the combination of "Ethernet port + optical port" to meet networking requirements of various scenarios, which is convenient for users to build a flexible network.



10G uplink 24-port core routing switch-Aggregation/Core

10G uplink 24-port core routing switch Model: ONV58008-12TFM L3 managed 10G uplink Ethernet core routing switch with 8*10/100/1000M RJ45 ports and 12*1/10G



H3C S6530X Series

H3C S6530X series switches provide industry-leading high performance and scalable aggregation switching solution with modular dual power, fixed uplinks (40GE/100GE) and IRF for resiliency.



Ruijie RG-S5760C-24SFP/8GT8XS-X 24-Port GE

Ruijie RG-S5760C-24SFP/8GT8XS-X 24-Port GE Optical Layer 3 Enterprise-Class Core or Aggregation Switch (with Eight Combo Ports), Eight 10G Uplink Ports





H3C FS5500V2-EI Series Converged Optical Electrical Switches

H3C FS5500V2-EI series switches support M-LAG, which enables links of multiple switches to aggregate into one to implement device-level link backup. M-LAG is applicable to servers dual



All-Optical 24-Port SFP Network Switch Layer3

TOP-S3230-28SX is totally optical switch with 24-port Gigabit SFP Layer3 managed network switch TOP-S3230-28SX, features with All-Optical Ports and Redundant

What Is an All-Optical Ethernet Switch?

All-optical Ethernet switches are a type of switch that provides optical uplink and downlink ports, making them an ideal choice for building an all-optical campus network. They can function as



Switch Aggregation

An 8-port, Layer 2 switch made for 10G SFP+ connections.



Contact Us

For datasheets, pricing, or custom telecom energy solutions, please visit:
<https://www.koskolong.co.za>