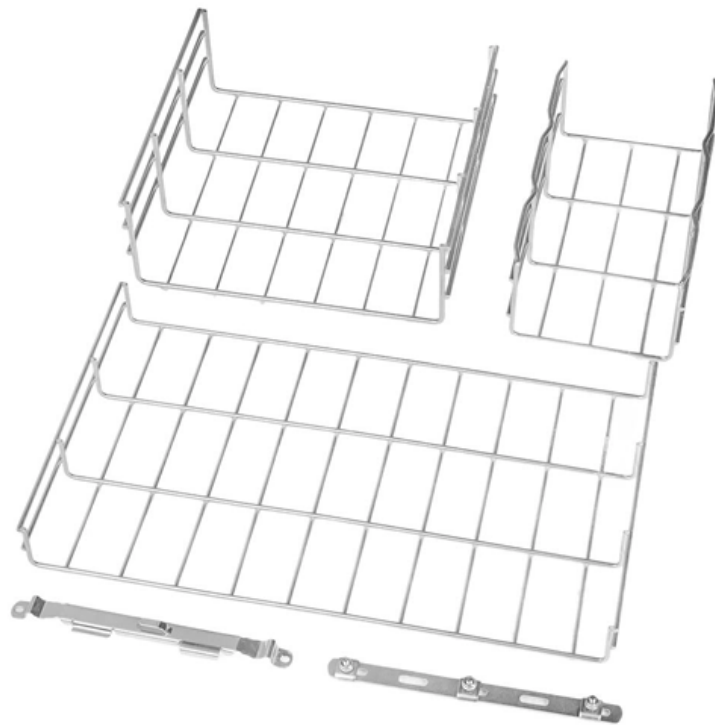




**Adam Tas Corridor Energy**

# **Aggregation switch needs to be paired**





## Overview

---

By design, it therefore provides resiliency because it will always be deployed in pairs of switches and comes with a recommendation to deploy only dual hot swappable power supplies and redundant fans in each switch to augment reliability. An Aggregation or "Top-of-Rack" switch is designed to connect everything in a rack at high speeds, then have an even bigger pipe out to the rest of the network. By bundling multiple network connections into a single high-bandwidth link, aggregation switches help. It facilitates the connectivity because it would rapidly become impractical to interconnect all access switches in a full mesh of links without relying on an.



## Aggregation switch needs to be paired

---

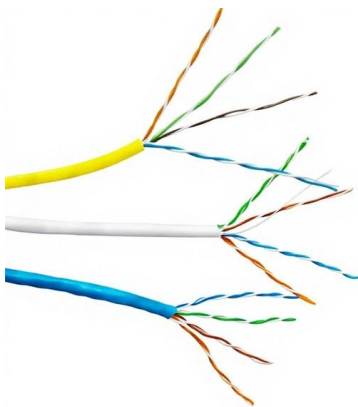


### Configure Active/Passive HA

The firewalls support only HA active/passive mode; HA active/active mode is not supported. HA active/passive includes comprehensive network integration

### Aggregation layer , FortiSwitch 7.6.0 , Fortinet Document Library

By design, it therefore provides resiliency because it will always be deployed in pairs of switches and comes with a recommendation to deploy only dual hot swappable power supplies and redundant



### What is an Aggregation Switch? , Features and Practical Benefits

This article focuses on the question of what is an aggregation switch and how it works its uses and its implementation. Read till the end to learn this very important concept in network

### What is Switch Aggregation, Its Role and Selection Advice

This article wraps up "what is switch aggregation" and suggestions for choosing an



aggregation switch. By considering these factors, network administrators can make informed



### **Aggregation Switch: Increasing the Priority of Special Traffic**

Aggregation switches set up stacks to implement device-level backup and increase the interface density and forwarding bandwidth. Before deploying QoS, ensure that the campus network is connected. For

Hier sollte eine Beschreibung angezeigt werden, diese Seite lässt dies jedoch nicht zu.



### **Test Access Points Aggregation**

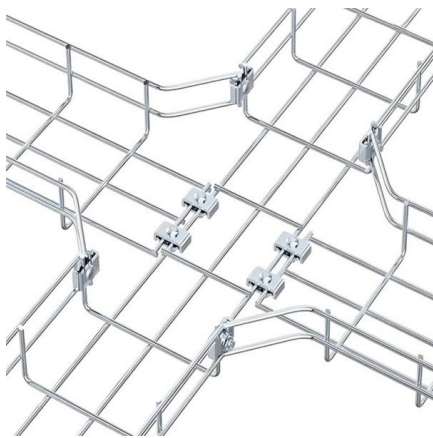
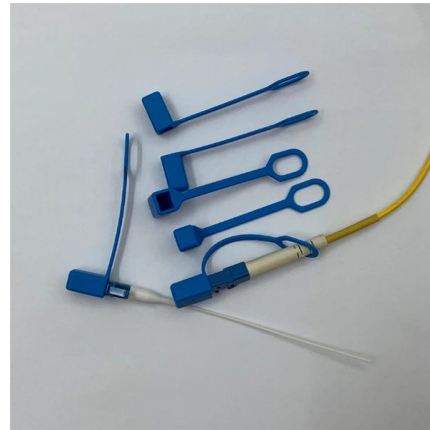
The TAP aggregation switch is directly connected to all of the analysis tools used to monitor the events in the network fabric. These monitoring devices include remote monitor (RMON) probes, application





## Link Aggregation

Aggregation with multiple switches on one end, such as split multilink trunking (SMLT) by Nortel, is not possible with link aggregation. The exception is with



## Network Order for Switch Aggregation Addition : r/Ubiquiti

Ubiquiti says that you need to "Make sure to enable port aggregation on the down link device first before enabling it on the up link device". So in other words enable it on the POE switch first then the

## Medium Branch Switch Configuration

this section of the guide will demonstrate how to configure a Aggregation switch with dual purposes, providing power and layer 2 access to



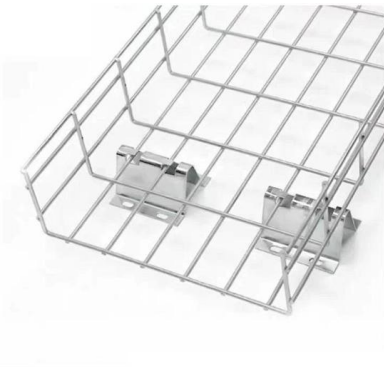
## Aggregated Ethernet Interfaces Overview

Link Aggregation Group (LAG) You configure a LAG by specifying the link number as a physical device and then associating a set of interfaces (ports) with the link. All the interfaces must have the same



## Redundant Link Connection From Access Switch To HA Aggregation

Solved: Dear Support, I am configuring an access switch with main fiber link connection to Aggregation/core switch and a second fiber link connection to the same Aggregation/core switch.

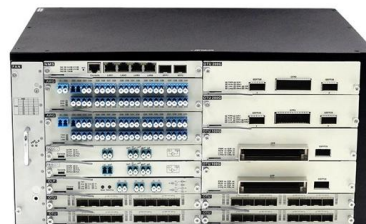


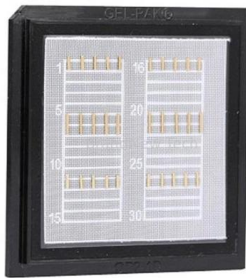
## [Wireless Router] How to setup link aggregation on ASUS router

For example, if you want to use the router and the NAS to do the Link Aggregation (LACP), and both of them need to support IEEE 802.3ad. Please refer to the Product model page in

## Hi-Capacity Aggregation Installation Guide

How to install and set up Hi-Capacity Aggregation; Set up your USW-Pro-Aggregation for the first time.



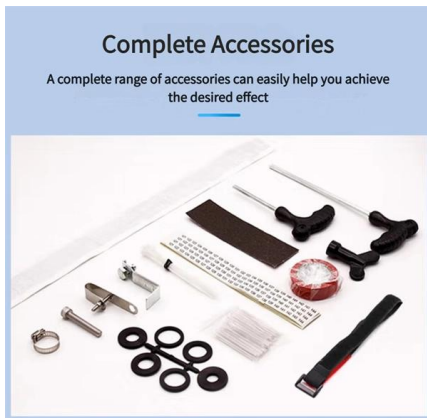


## Link Aggregation: What is it, and How Does it Work?

Link aggregation is a way of bundling a bunch of individual (Ethernet) links together so they act as a single logical link. A fundamental for effective

## Aggregation Switch

An aggregation switch refers to a type of switch used to connect multiple ToR switches to a core switch/router in a cloud data center network. It enables high-bandwidth aggregation ports to be



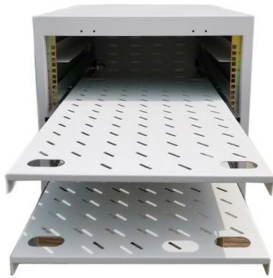
## Aggregation Switch

You aren't really going to gain much, unless you aggregate the connections i.e. put them in pairs and run them at 20Gb but would be total overkill for a residential property. If you're looking to improve your

## Why You Need a Fiber Aggregation Switch and How it

Q: How does a Fiber Aggregation Switch differ from a regular switch? A: In contrast to ordinary switches that connect end devices together through low





## In-depth analysis: What is an aggregation switch?

In many network constructions, we have all heard of switches. So do you really understand switches? Why are aggregation switches often overlooked?

## Configuring MC-LAG in UniFi Network - Ubiquiti Help

On the Preexisting MC-LAG Pair, designate at least two ports on each of the Top and Bottom Switch that you intend to aggregate with the new MC-LAG pair.



## Support

Dynamic link aggregation fails on a server-facing aggregate interface if dynamic link aggregation is configured only on the device. The device forwards traffic by using only one of the physical ports that

## How To Set Up Switch Link Aggregation

In this article, I'm going to describe how to set up Link Aggregation between two managed switches to provide connectivity, redundancy, and expanded



## What Is an Aggregation Switch and How to Choose?

So, what exactly is an aggregation switch, and how do you choose the right one? Let's examine it in detail.



## Aggregation Switch

An Aggregation or "Top-of-Rack" switch is designed to connect everything in a rack at high speeds, then have an even bigger pipe out to the rest of the network. The Pro Aggregation does this with it's



## Do I NEED a switch aggregation? : r/UNIFI

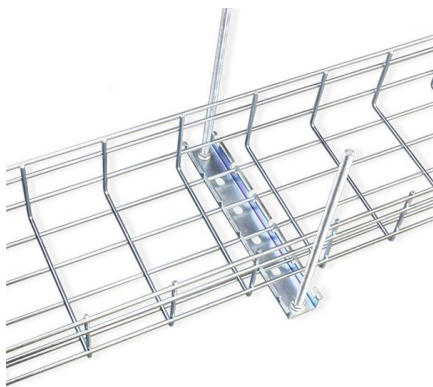
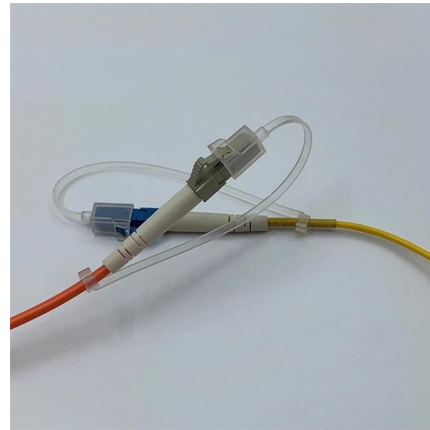
No, you probably don't need a aggregation switch. Most of your traffic is probably between your clients and the internet as opposed to from client to client/server all within the same network. Your





## Aggregation Switch : r/Ubiquiti

An aggregation switch would help with the load balancing for your setup, on a side note for both aesthetics and ease of use you should put your 48port switches in-between each of your 2 patch



## DO I NEED AGGREGATION SWITCH / SETUP CHECK

I got a switch aggregation to go 10G in my unraid server. I still on the fence on getting a flex xg when I move in my new home but realistically live day to day with

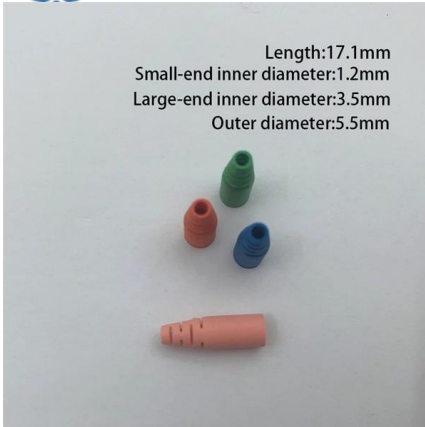
## Port Aggregation Configurations

Port Aggregation Port aggregation allows you to group multiple physical ports into one unit. Port aggregation is useful for implementing load balancing and provides a redundant link backup. To



## How To Set Up NIC Teaming (Link Aggregation)

Next up: setting up the switch. You'll need a switch that supports link aggregation, whereby there's management capabilities that will allow you to bond



### Configure Active/Passive HA

Active/Passive High Availability (HA) provides firewall redundancy by maintaining two firewalls in a primary-secondary relationship, where one firewall actively



### Contact Us

For datasheets, pricing, or custom telecom energy solutions, please visit:  
<https://www.koskolong.co.za>