



Adam Tas Corridor Energy

Aggregation switch with 6 VLANs





Aggregation switch with 6 VLANs



Example for Configuring VLAN Aggregation

S1720, S2700, S5700, and S6720 V200R011C10 Configuration Guide - Ethernet Switching This document describes the configuration of Ethernet services, including configuring link aggregation,

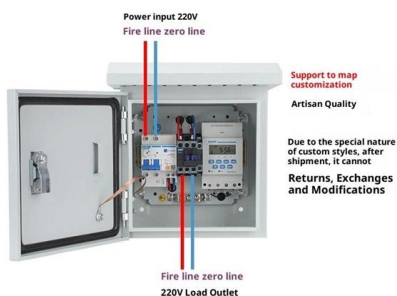
Adding 802.3ad link aggregation groups (trunks)

Adding 802.3ad link aggregation groups (trunks) If the trunk is in LACP mode and has ports with different speeds, the ports of the same negotiated speed are

MTP MPO SC-Type Fiber Adapter



Product Wiring Diagram



Data Center Aggregation Layer Design and Configuration with

This chapter covers the design recommendations for a data center design deployment consisting of a Cisco Nexus® 7000 Series Switch at the aggregation layer and a Cisco Nexus 5000 Series Switch at

What Is an Aggregation Switch and How to Choose?

So, what exactly is an aggregation switch, and how do you choose the right one? Let's examine



AOS 6.10

Using Link Aggregation Group (LAG) on a distributed switch, you can connect the ESXi host to physical switched by using dynamic link aggregation. You can create multiple link



48 ports poe aggregation network switch with 6 ports 10 gb SFP

Engineered for enterprise reliability, it offers advanced L3 routing, VLAN, QoS, and ACL security for optimized traffic management. The design ensures stable operation, while the 10G fiber uplinks



Data Center Aggregation Layer Design and Configuration with

Introduction This chapter covers the design recommendations for a data center design deployment consisting of a Cisco Nexus® 7000 Series Switch at the aggregation layer and a Cisco Nexus 5000



Link aggregation groups , FortiSwitch 7.6.4 , Fortinet Document Library

Link aggregation groups This section provides information on how to configure a link aggregation group (LAG). For LAG control, the FortiSwitch unit supports the industry-standard Link Aggregation Control



Link Aggregation Groups

Link Aggregation Groups Link aggregation is a method of combining multiple links to form a single virtual link that can carry a higher combined bandwidth. You can link multiple ports on a single connector to

MLAG

MLAG - Basic Configuration MLAG Overview LAG or link aggregation is a way of bonding multiple physical links into a combined logical link. MLAG or multi-chassis link aggregation extends this



VLAN Aggregation Configuration

This chapter describes how to configure VLAN aggregation. VLAN aggregation allows for communication between hosts on the same network segment that are in different VLANs.



Multiple FortiSwitches in tiers via aggregate interface

Multiple FortiSwitches in tiers via aggregate interface with redundant link enabled This example provides a recommended configuration of FortiLink



Aggregation layer , FortiSwitch 7.6.0 , Fortinet Document Library

Aggregation-layer platforms The most appropriate FortiSwitch unit to form the aggregation layer comprises many 10/25/40 gigabit Ethernet ports to address the access layer and a few 100-GbE



Adding 802.3ad link aggregation groups (trunks) , FortiSwitch 7.6.4

Configuring FortiSwitch VLANs and ports
Configuring VLANs
Configuring ports using the GUI
Configuring port speed and status
Configuring flap guard
Configuring PoE
Adding 802.3ad link



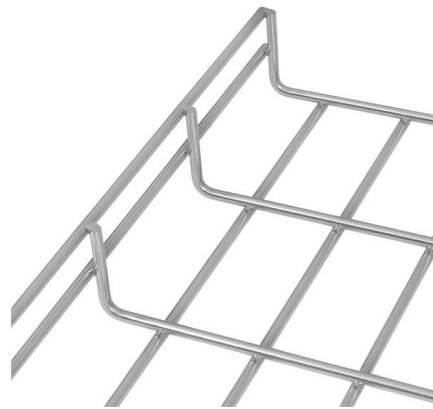


SODOLA 6 Port 2.5G Easy Web Managed Switch, 4 x

2.5G Easy Web Managed Switch: Effortlessly web manage switch, device status, and configurations via the intuitive web interface, and a suite of configurations -

Link aggregation groups , FortiSwitch 7.6.2 , Fortinet Document Library

Configure the trunk 2 interface and assign member ports as a LAG group: config switch trunk edit trunk2 set members "port4" "port5" set description test set mode lacp-passive set port-selection criteria src



EOS 4.36.0F

In the figure below, Switch A and Switch B are peer switches in the MLAG domain and connect to each other through the peer link. Each peer switch uses the peer

Link aggregation groups , FortiSwitch 7.6.4 , Fortinet Document Library

This section provides information on how to configure a link aggregation group (LAG). For LAG control, the FortiSwitch unit supports the industry-standard Link Aggregation Control Protocol (LACP). The



48 ports poe aggregation network switch with 6 ports 10 gb SFP

X1580P-48T6X, the layer 3 aggregation network switch has 48 ports gigabit ethernet PoE, and 6 ports 10G SFP+.



What Is Link Aggregation and Link Aggregation Switch?

You can surely make it by implementing link aggregation and link aggregation switch. We're going to share some insights on deploying link aggregation with Ethernet switch.



What is Switch Aggregation, Its Role and Selection Advice

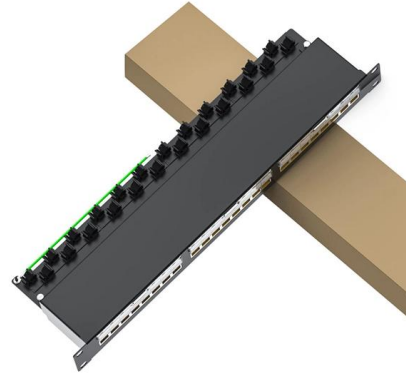
This article wraps up "what is switch aggregation" and suggestions for choosing an aggregation switch. By considering these factors, network administrators can make informed





Amazon : Link Aggregation Switch

Experience the power of link aggregation with versatile managed switches. Explore options with web-based management, VLAN support, and energy-efficient designs.



6 Port 2.5Gb Web Managed Switch, 4 x 2.5GbE Ports, 2

6 Port 2.5Gb Web Managed Switch, 4 x 2.5GbE Ports, 2 x 10G SFP+, Web Managed with Link Aggregation/VLAN/QOS, Metal Fanless Home Lab Network Switch Visit

Support

Aggregate Interface: Route-Aggregation2
Aggregation Mode: Static Loadsharing Type: Shar
Management VLANs: None Port Status Priority
Oper-Key XGE1/0/3 (R) S 32768 2 XGE1/0/4 S



Interfaces User Guide for Switches

Link Aggregation Group (LAG) You configure a LAG by specifying the link number as a physical device and then associating a set of interfaces (ports) with the link. All the interfaces must have the same



Configuration -- VLANs, Spanning Tree, and Link Aggregation Avaya

The following sections detail what's new in Avaya Ethernet Routing Switch 5000 Configuration -- VLANs, Spanning Tree and Link Aggregation, NN47200-502 Release 6.3.



VLAN Aggregation Configuration

VLAN aggregation introduces the concept of sub-VLANs and super-VLANs. A sub-VLAN is an independent broadcast domain that contains only physical interfaces, whereas a super-VLAN

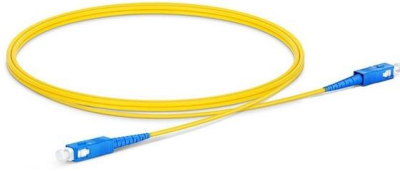
How To Set Up Switch Link Aggregation

I'm going to set up Link Aggregation between two gigabit switches: an 8 port Linksys SRW2008; and a 16 port Netgear GS716GT, shown in Figures 1 and 2 below. We





What Is an Aggregation Switch and How to Choose?



An aggregation switch is a network device that consolidates traffic from multiple access switches, wireless access points, or other edge devices and

Contact Us

For datasheets, pricing, or custom telecom energy solutions, please visit:
<https://www.koskolong.co.za>