



Adam Tas Corridor Energy

Angle of placement of the distribution box





Overview

What Is a Distribution Box?

A distribution box, also known as a power distribution unit, is a critical component in any electrical system.



Angle of placement of the distribution box

How to Install a Distribution Box in Singapore?



Guide to distribution box installation in Singapore, covering planning, wiring, circuit setup and safety. Ensure proper setup or consult a licensed electrician.

Size determination, installation method and wiring mode

During wall construction, the reserved hole shall be about 20mm larger than the length and width of the distribution box. The reserved depth is the thickness of



Distribution Box Installation: A Complete Guide to Safe

Mount the distribution box in a convenient, accessible location that complies with local electrical codes. Typically, this is in a basement, utility room, or garage.

How to confirm whether the installation location of the

The electrical distribution box plays a vital role in the power system. It is responsible for



distributing electricity to various circuits and equipment.



Where is the best place to put a Electrical distribution box?

Additionally, if the box is located in an area with high humidity or moisture, it is important to take steps to mitigate these effects - consider using cooling fans and dehumidifiers to ensure your

Essential Guide to Placement of Distribution Box in Septic Systems

Understanding the distance between the distribution box and the septic tank is essential for maintaining an efficient septic system. This section will break down the factors that influence this



Understanding Distribution Boxes: Your Guide to Power

Weatherproof Distribution Boxes These serve specific outdoor purposes, with rain, dust, and extreme temperatures sealed shut, protecting any





How to determine the size, installation method and

9) The wood brick and iron parts needed for the installation of the distribution board need to be buried in advance, and the exposed distribution box should be fixed



Requirements And Specifications For Installation Of

The bottom edge of the distribution box is usually between 1.5 meters and 1.8 meters above the ground, which is convenient for operation and

Key Points Of Installation And Collocation Of Distribution Box In

The inlets and outlets of the mobile distribution box and switch box shall not be connected with pins Rubber insulated cable must be used for the mouth line and exit line. 8. The distribution box and



Cautions and Requirements for Installation of

Distribution box is a low-voltage distribution device which assembles switchgear, measuring instruments, protective appliances and auxiliary equipment in a closed



Distribution Box Wiring Steps

?Preparation phase? ?Box installation?: Make sure that Distribution box has been correctly installed and fixed. ?Material preparation?: Prepare the required cir



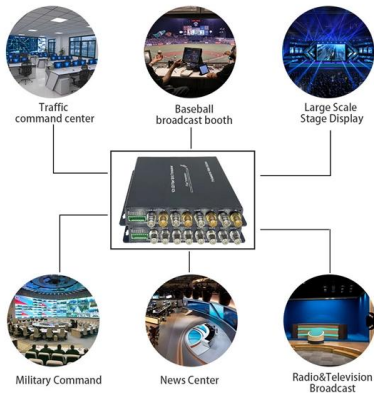
The purpose, working principle, and usage instructions

(2) The installation positions of each distribution box and switch box in the construction power distribution system should be reasonable. The main

News

While a common recommendation is to position the bottom edge of the distribution cabinet approximately 1.4 meters above the ground, this height may vary based on the convenience of



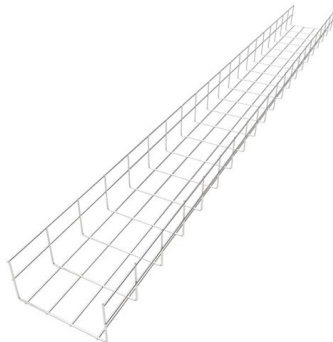


Distribution Box: Types and Functions , Axis-Electricals

A distribution box ensures that electrical supply is distributed in the building, also known as a distribution board, panel board, breaker panel, or electric panel. It is

Cable Distribution Box Layout: 10 Industrial Strategies

This article will detail the practical strategies for optimizing the layout of cable distribution boxes in industrial scenarios, integrating the advantages of Chuanli products and industry best

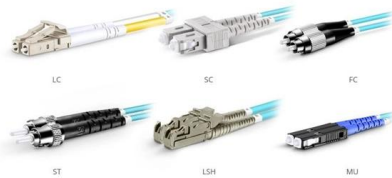


How to Install a Distribution Box--A Comprehensive

Distribution Box Installation: Put the distribution box on the installation surface, and align the position of the expansion bolts and tighten the screws. This

TECHNICAL SPECIFICATION FOR LT DISTRIBUTION BOX

General Technical Particulars for LT Distribution Boxes : - The L.T. Distribution Boxes should be of the dimensions as per the drawing & details in the table furnished.



OM3 Fiber Patch Cable Family

What Is an Electrical Distribution Box? A Complete Guide

What Is an Electrical Distribution Box? An electrical distribution box serves as a centralized unit for distributing electrical power within

Key Points Of Distribution Box Installation

The wire inlets and outlets in the distribution box and switch box shall be set at the lower bottom of the box. It is strictly prohibited to set them at the top, side, back or door of the box.



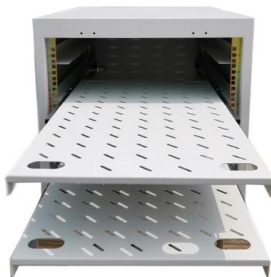
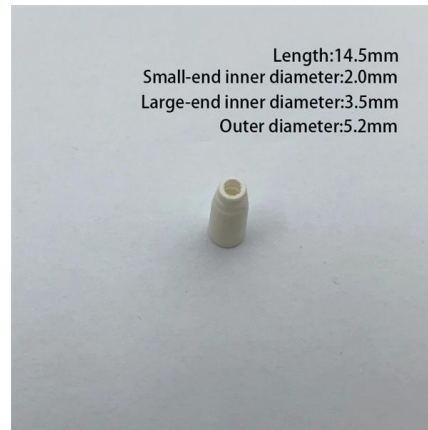
Understanding Distribution Boxes:A Comprehensive Guide

A distribution boxes is an essential device that manages the safe and efficient flow of electrical power throughout different areas of a building or facility.



Power Distribution Boxes Explained Simply

Discover the essentials of a Power Distribution Box--how it works, key types, benefits, and tips to ensure safe, efficient electrical power management.



Where is the best place to put a power distribution box?

So, here at Rubber Box, we're here to list off some of the key considerations that should be considered when determining the ideal placement for a power distribution box. Accessibility One of the most

Key Points Of Distribution Box Installation

1. The power distribution system at the construction site shall implement hierarchical power distribution, which shall be equipped with a general distribution box (or distribution room), a distributio



Contact Us

For datasheets, pricing, or custom telecom energy solutions, please visit:
<https://www.koskolong.co.za>