



Adam Tas Corridor Energy

Are junction boxes considered hardware





Overview

A small metal, plastic or fiberglass junction box may form part of an or (TPS) wiring in a building. If designed for surface mounting, it is used mostly in ceilings, concrete or concealed behind an access panel—particularly in domestic or commercial buildings. An appropriate type (such as that shown in the gallery) may be buried in the of a wall (although full conceal.



Are junction boxes considered hardware



Understanding the Junction Box: The Cornerstone of

Explore the essential role of a junction box in residential and commercial electrical systems. Learn its uses, key features, and installation tips

Everything You Need to Know About Junction Boxes for Hardwiring

Moreover, junction boxes often have convenient knockouts or openings for incoming and outgoing wires, allowing for neat and orderly



Junction Boxes , A Complete Guide

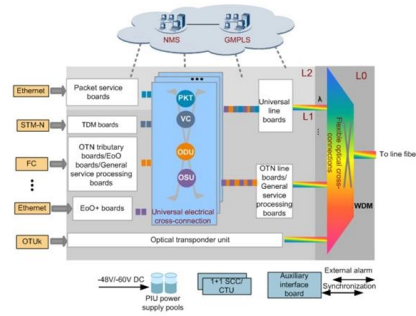
A junction box and an outlet box are both types of electrical boxes that enclose wire connections safely. However, the key difference lies in their specific

What is an Electrical Junction Box and What Does it Do?

Junction boxes are made of non-conductive materials like plastic or metal to enclose and



protect electrical wire connections. Plastic junction boxes are lightweight and corrosion resistant



Junction box

A small metal, plastic or fiberglass junction box may form part of an electrical conduit or thermoplastic-sheathed cable (TPS) wiring system in a building. If designed for surface mounting, it is used mostly in ceilings, concrete or concealed behind an access panel--particularly in domestic or commercial buildings. An appropriate type (such as that shown in the gallery) may be buried in the plaster of a wall (although full conceal



Electrical Installations That Don't Need Junction Boxes

One benefit of electrical installations that don't need junction boxes is there is no need to install a separate junction box in the wall. The cable exits the



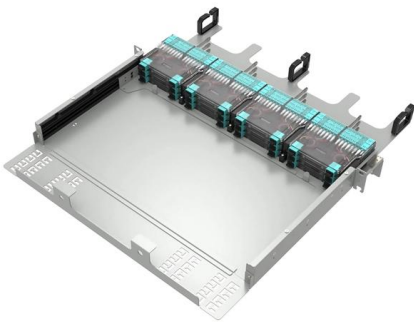
Junction Box Types and Applications , Electrical

Learn about different junction box types, their materials, and applications across residential, commercial, and industrial sectors.



Everything You Need To Know About Junction Boxes

Everything You Need To Know About Junction Boxes A junction box is an electrical enclosure used to protect and safely contain electrical connections



What is an Electrical Junction Box and What Does it Do?

What is an electrical junction box and why is it important? Learn about the different types, sizing, uses, installation, and wiring of junction boxes.

What is a Junction Box (or jbox)? , Electrical Knowledge

A junction box - also known as an ' electrical box ', ' jbox ', 'or ' terminal box ' - is a protective box where wires are interconnected. Junction





Conduit Body vs. Junction Box: Key Differences, When

Learn the practical differences between conduit bodies and junction boxes. Understand NEC requirements, use cases, and which Shelden product

Distribution Box vs Control Box vs Junction Box: Key

Learn the differences between distribution boxes, control boxes, and junction boxes. Discover their functions, applications, and how E-abel provides



Terminal and Junction Boxes Selection Guide: Types, Features

Description Terminal and junction boxes are used to house electrical components and facilitate wiring. Selection Considerations When selecting terminal or junction boxes, correct size and adequate

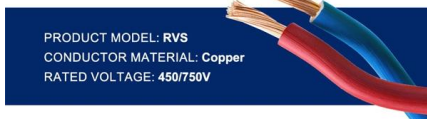
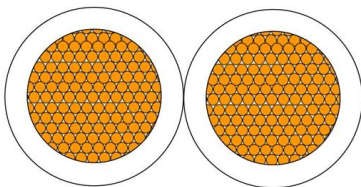
Junction Box Grounding Requirements: (2024 NEC Guide)

Learn the essential junction box grounding requirements per NEC 250.148. Ensure safety and pass inspections with our expert bonding guide. Read now!



Understanding Junction Boxes: Essential Components

VIOX Junction Box B. Importance in electrical systems Junction boxes are essential for preserving the safety and effectiveness of electrical



What Are Junction Boxes and Why Are They Required?

Learn why junction boxes are essential for electrical safety, what types exist, and the critical NEC rules for mandatory installation and accessibility.



What Is Junction Box And What Is Junction Box's Function?

What Is a Junction Box? A junction box is typically a metal or plastic enclosure that contains electrical connections. These boxes come in various sizes, shapes, and materials, depending on the specific





What Is A Junction Box And What Does It Mean For

Electrical expert Chris Lozano said a junction box is "a means to contain electrical connections and pull points" to prevent fires if cutting or splicing



Electrical Junction Box Types: Materials, Uses

While many electrical boxes hold switches, outlets, or fixtures, a junction box is typically used only for wire connections, often hidden behind walls,

What is a Junction Box: The Ultimate Guide

Junction boxes, while appearing simple, are composed of several key components that work together to ensure safe and effective electrical connections



Junction Box Types: Choose the Right One for Your

Choosing the right junction box helps keep your wires safe and makes sure your electrical setup works well. Here are a few factors to consider when



What is a Junction Box: Definition and Practical Uses !

What is a Junction Box: Discover the essential functions of junction boxes in electrical wiring systems. Learn about different types, their key.



Distribution Box vs Control Box vs Junction Box: Key

A junction box is primarily used for housing connections between electrical cables. It does not control or distribute power in the same way as

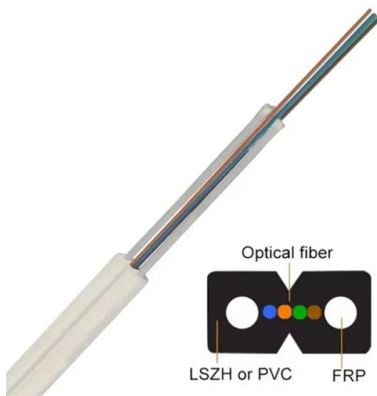
Electrical Junction Box NEC Code: Rules, Requirements

According to the NEC (National Electrical Code), all wire splices and electrical connections must be enclosed within an approved electrical junction



Understanding the Junction Box: The Cornerstone of

Junction boxes guard electrical connections by providing sturdy housing that protects wiring against wetness, dirt, and mechanical damage. This



Electrical Junction Box Types: Materials, Uses

Learn the main electrical junction box types, including materials, shapes, indoor and outdoor uses, and how to choose the right box for safe wiring.



What Are Junction Boxes and Why Are They Required?

An electrical junction box is a protective enclosure used to house the splices and terminations of electrical wiring. Functioning as a secure hub, the box manages the points where

What Is an Electrical Junction Box and Why Do You Need One?

The essential guide to electrical junction boxes: types, selection, and mandatory safety codes for safe installation and fire prevention.





What Is a Junction Box Used For and Why It Matters

Learn what a junction box is used for, how it protects wire connections, and why it's essential for electrical safety in homes, buildings, and



Understanding Junction Boxes: Essential Components

Junction boxes, which offer secure and well-organized connections for wiring in a variety of settings, are crucial parts of electrical systems. These



Contact Us

For datasheets, pricing, or custom telecom energy solutions, please visit:
<https://www.koskolong.co.za>