



**Adam Tas Corridor Energy**

# **Argentina Smart Patch Panel**





## Argentina Smart Patch Panel

---



### **SMARTPATCH Intelligent Systems , Leviton Network Solutions**

SMARTPATCH is a modular-based system which provides the flexibility and support required to efficiently meet business needs. Operates on multiple network/database platforms and supports

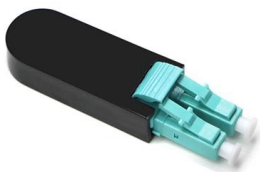
### **Smart Patch Panels & Intelligent Infrastructure Management Guide**

Smart Patch Panels & Intelligent Infrastructure Management Guide Introduction - when a cabinet becomes a source of truth Traditional patch panels behave like filing cabinets: they hold connections



### **Siemon M-spp-k24ens**

The MapIT G2 Smart Patch Panel (SPP) is an industry first in intelligent infrastructure management. The panel features on-board intelligence and a combination of LEDs and a backlit LCD to guide



### **Hardware**

Belden PatchPro® offers a complete intelligent ready physical layer management system that uses RFID (radio frequency identification)



### Intelligent Patch Panel System

Technical research shows that almost half of all network problems arise from problems in the physical infrastructure level. Despite of this fact the physical infrastructure is largely overlooked and a lot of



### Intelligent Copper Panels

CommScope offers Intelligent Copper Panels for automated infrastructure management solutions that enable you to monitor, manage and optimize your network connectivity in real time



### MapIT G2 Smart Copper Patch Panel

The MapIT G2 Smart Copper Patch Panels (SPP) are an industry first in intelligent infrastructure management. The panel features on board intelligence and a combination of LEDs and a backlit LCD





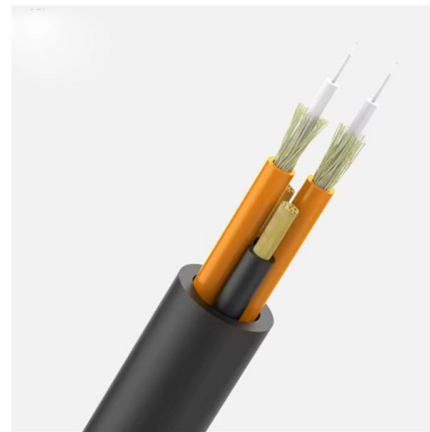
## Patch Panel

Envíos Gratis en el día Comprá Patch Panel en cuotas sin interés! Conocé nuestras increíbles ofertas y promociones en millones de productos.



## Intelligent patching systems: A competitive advantage

Too often, enterprise customers can be focused on short-term, "parts and labor" installation savings instead of the long-term, life-cycle expense of their networks.



## Intelligent Patching (IP)

We recommend to equip the entire patch panels with intelligent electronic and use intelligent patch cords in order to keep an eye on the real-time monitoring of the



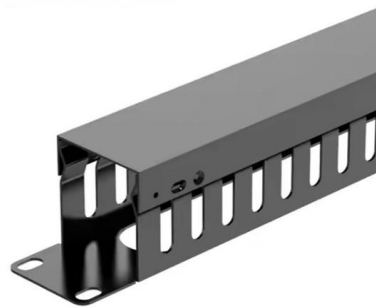
## RiT Smart GIGA 24 Patch Panel Vertical 1000 Mbps

SMART Giga 24 patch panels conform to ANSI/TIA/EIA-568-B.2, ISO/IEC 11801 2nd edition (2002) and CENELEC EN50173 (2002) for Category 5e/Class D, and are



## Siemon adds angled patch panels to its intelligent

15 August 2012 Global infrastructure specialist, Siemon has announced the addition of new angled Smart Patch Panels (SPP) to its full MapIT G2 intelligent infrastructure management (IIM) solution for



## SmartPatch(TM) Copper Snap-In-Jack Pane

APPLICATION SmartPatch Intelligent Patch Panels enable the monitoring and recording of patching status for copper networks. Intelligent panels communicate with and receive power from the



## MapIT G2 Smart Patch Panels, Control Panels, Patch Cords

MapIT G2 integrates the powerful combination of innovative Smart Patch Panels, user-friendly Master Control Panels and EagleEye(TM) software to provide real-time tracking and reporting of network-wide





## Simplify IT Management with Automated Infrastructure



Plus, our innovative Main Control Panels (MCP) and Smart Patch Panels (SPP) help to guide technicians on work order steps and indicate if an action is done

## Intelligent Patching Systems

This complete & intelligent-ready physical layer management system uses RFID technology for wireless detection of individual patch cords & real-time monitoring



## Intelligent Patch Panel System

Intelligent Patch Panel System CAN-INTF-10X  
Technical research shows that almost half of all network problems arise from problems in the physical infrastructure level. Despite of this fact the physical

## SmartPatch(TM) Fiber LC Pane

SmartPatch Fiber LC Panels are available with RFID antenna strip included or as an intelligent-ready panel without the antenna. SmartPatch Fiber LC Panels are 1RU high, and support 48 fibers with 24



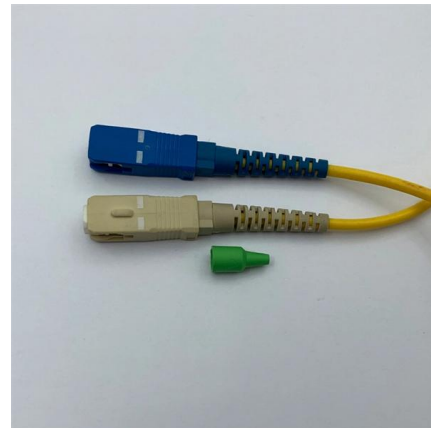
### **Patch Panels , Leviton Network Solutions**

Leviton offers the industry's largest selection of high-quality copper and fiber optic patch panels to support the latest technologies and provide ideal configurations



### **SMARTPATCH Intelligent Systems , Leviton Network**

SMARTPATCH provides simple and controlled management and recording of common network changes such as those resulting from office moves and terminal



### **Siemon Angled Patch Panels**

Siemon has added new angled Smart Patch Panels (SPP) to its full MapIT G2 intelligent infrastructure management (IIM) solution.





## What is a Patch Panel and Why You Need It?

A patch panel is a piece of hardware with multiple wire ports that are used to connect various IT devices together. They are found in IT and telecom

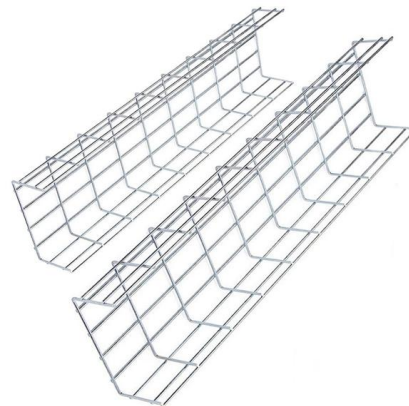


## Intelligent Patch Panel Solution

EN 60950-1; EN 55032; EN 55035; EN 61000-3-2; EN 61000-3-3, ANSI C63.4 Infinique's Intelligent Patch Panel Solution for Copper and Fiber Structured Cabling System provides an automated and

## Infinique Intelligent Fiber Patch Panel 24 Port , Infinique

Infinique's Intelligent Patch Panel Solution for Copper and Fiber Structured Cabling System provides an automated and versatile remote management of ICT



## SMART SC 48 Patch Panels

The SMART SC 48 Patch Panel is a new addition to the RiT family of SNMP manageable real-time connectivity products. The panels, which support 24 duplex adapters (48 fibers) in a 2U rack space,



### Patch Panel Inteligente < Product

El sistema de gestión de infraestructura inteligente LS SimpleWin (TM) acelera y simplifica drásticamente la planificación del sitio y el aprovisionamiento, el mantenimiento y la seguridad diario de la red.



### trendy patch panel: Smart & High-Density Solutions for 2025

In conclusion, the patch panel market is on a strong growth trajectory, driven by technological advancements and increasing demand for high-speed, reliable connectivity. The key

## Contact Us

---

For datasheets, pricing, or custom telecom energy solutions, please visit:  
<https://www.koskolong.co.za>