



Adam Tas Corridor Energy

Attachment Single-loop optical cable





Overview

Optical attached cable (OPAC) is a type of fibre-optic cable that is installed by being attached to a host conductor along overhead power lines. EtymologyThe generic (IEC) and designation for attached cable is "OPAC". OPAC can be used in the same sense as the nomenclature "OPGW" and "ADSS".



Attachment Single-loop optical cable



ADSS Communication Connectors (CA05079E)

OPTI-LOOPTM DIRECT ATTACH FOS The Opti-Loop™ ADSS Direct Attach unit uses the patented bowtie double deadend process for storing ADSS fiber. This system provides maximum protection for

Fiber Optic Cable Installation and Handling Instructions

The information contained in this manual should serve as a guide to proper handling, installing, testing, and for troubleshooting problems with fiber optic cables.



Optical attached cable

Optical attached cable (OPAC) is a type of fibre-optic cable that is installed by being attached to a host conductor along overhead power lines. The attachment system

Fiber Optic Cable Installation and Handling Instructions

Fiber optic cables can be easily damaged if they are improperly handled or installed. It is



imperative that certain procedures be followed in the handling of these cables to avoid damage and/or limiting their



WORLD WIDE WEB JOURNAL Home

O'Reilly & Associates, Inc. 103A Morris St.
Sebastopol, CA United States

Fiber Optic Cable Types - Multimode and Single Mode

Single Mode cable has a much smaller core (8-9um) than multimode cable and uses a single path (mode) to carry the light. The main difference between single mode OS1 and OS2 is cable



Length:44mm
Small-end inner diameter:3.6mm
Large-end inner diameter:5.5mm

Patchcord and Cable loss FOA-2a

FOA Standard FOA-2 Testing Loss of Fiber Optic Cables, Single-Ended 2025, The Fiber Optic Association, Inc. Patchcord and Cable loss FOA-2a.docx, 1/12/25, 1



Fiber Optic Cable Types Explained

Learn all about the differences between single mode and multimode cables, as well as the various fiber wavelengths and standard core sizes used in fiber optics.



6 Things You Should Know About Active Optical Cable

What are the Applications of Active Optical Cables? AOC cables were developed as an alternative to traditional Direct Attach Copper cables

A Complete Guide to Single Mode LC Connectors in

The LC connector is specially designed for single-mode fiber optic cables. It minimizes signal loss and interference, which is very conducive to high-bandwidth



FIBER OPTIC CONSTRUCTION STANDARDS

Fiber optic cable sequential numbers are required at each pole location and vault wall. Sequential numbers will identify conduit length, and slack left in vaults and at poles.



Handbook Optical fibres, cables and systems

In optical fibres, the change from multimode to single-mode behaviour does not occur at an isolated wavelength, but rather smoothly over a range of wavelengths.



AFL Fiber Optic Cable: A Complete Solution for Your

AFL Fiber Optic Cable offers a complete solution for all of your needs, from aerial to underground to indoor to outdoor. We have a wide variety of fiber cable types to

10G SFP+ AOC , FS

Description FS SFP+ Active Optical Cable (AOC) assemblies use active circuits to support longer distances than standard Passive or Active SFP+ Copper Cables. They are designed for high speed,





SLACKLOOP® Plastic In-Span Storage

The SLACKLOOP Plastic In-Span Storage is designed to store slack ADSS or lashed messenger fiber optic cables within the span. The storage brackets can

Fibre Optic Cable & Connector Guide

Choices must be made in selecting fibre optic cables and connectors for high-reliability applications. This white paper provides the knowledge for how to make appropriate selections of fibre optic cable and



Understanding Single Mode LC Connector: A

Discover the essentials of Single Mode LC Connectors in our comprehensive guide. Explore our range of fiber optic cables, including simplex

Singlemode Fiber Optic Cable Assemblies - Mouser

Singlemode Fiber Optic Cable Assemblies are available at Mouser Electronics. Mouser offers inventory, pricing, & datasheets for Singlemode Fiber Optic Cable Assemblies.



Fiber Optic Cable Types Explained

Our comprehensive guide to types of fiber optic cables. Learn all about the differences between single mode and multimode cables, as well as the various



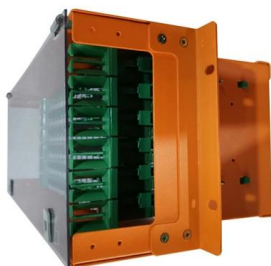
Engineering: Optical attached cable

Optical attached cable (OPAC) is a type of fibre-optic cable that is installed by being attached to a host conductor along overhead power lines. The attachment system



101 Guidelines for Fiber Optic Cable Installation

Avoid placing fiber optic cables in raceways and conduits with copper cables to avoid excessive loading or twisting. Attach cables with plastic clamps having large





The FOA Reference For Fiber Optics -Outside Plant

Closures attached to the messenger and their cable (s) must be securely attached and service loops secured along the current cables with showshoe turnarounds



Fiber Optic Cables

Meet all of your fiber optic cable assembly needs in full with our extensive line of trunk assemblies, breakout harnesses, patch cords, interconnects, and pigtails.

Everything you need to know about fiber optic termination

Fiber Optic Termination Tutorial We terminate fiber optic cable two ways - with connectors that can mate two fibers to create a temporary joint and/or connect



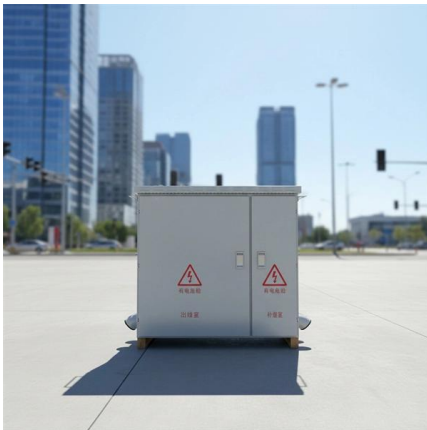
Fiber Optic Cables

Fiber Optic Cables, Adaptors, & Accessories Our extensive offering of fiber optic cables, connectors, cassettes, enclosures, patch cords, cable assemblies, cable



How To Install Fiber Optic Cable Connectors?

There are many types of fiber optic connectors, including SC, LC, FC, ST, D4, MU, MT/MPO, etc. These connectors can be divided into single-mode



The FOA Reference For Fiber Optics

For singlemode fiber, a simple loop mode filter is all that is needed. With all reference cables, be careful to not stress them during the tests as that can induce loss that

AmScope Fiber Optic Single Gooseneck Attachment for

Key Features This single gooseneck fiber optic attachment for microscope fiber optic illuminators comes with a 22" (560mm) metal-sheathed light cable and a two





Optical Fiber Cable Installation Guideline



When laying loops of fiber on a surface during a pull, use "figure-8" loops to prevent twisting the cable. The figure 8 puts a half twist in on one side of the 8 and takes it out on the other, preventing twists.

Contact Us

For datasheets, pricing, or custom telecom energy solutions, please visit:
<https://www.koskolong.co.za>