



Adam Tas Corridor Energy

Bare Ceiling Cable Tray Cabling





Bare Ceiling Cable Tray Cabling

Cable Tray Systems: Requirements and Best Practices



Comprehensive guide to cable tray systems requirements: tray types, materials, loading, supports, bonding, routing, and best practices for safe electrical cable management.

Tray-Rated Cable 101

Tray-Rated Cable 101 What is tray cable?
According to the NEC (National Electric Code), tray cable is defined as "a factory assembly of two or more insulated conductors, with or without associated bare



ITER Cabling Handbook

All cable trays must be equipped with an earth cable (usually bare copper cable 25 mm² cross section). It shall be fixed on the external part of the cable tray's wall.

Installation Of Cable In Cable Trays: NEC, Safety

Installation of Cable in Cable Trays ensures proper routing, cable management, NEC



compliance, grounding, fire safety, and load capacity.



Types of Cable Typically Used in Cable Tray

TC cables are rated for 600 volts and can be used in industrial power or control circuits, where flame retardant cables are desired. Allowed installations include



Master Cable Tray Installation: A Professional Step-by

Learn how to install cable trays for large-scale projects with our professional, step-by-step guide covering industry standards, safety protocols,



Ceiling Cable Tray, Cable Tray Electrical Manufacturer

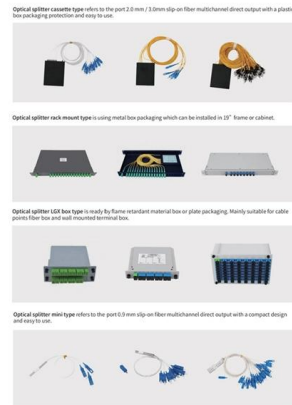
Maximize cable management with our Ceiling Cable Trays that are customizable and perforated. Offering a variety of accessories and can be easily modified or





Cable Tray Questions , Cable Tray Institute

Answer: Yes, there are NEC rules. Instrumentation, signal, and telecommunications cabling should be separated from power cabling. There are NEC requirements, but also for noise and electromagnetic



Cable Tray

Cable trays with a rail height of 60 mm, in widths of 100 to 300 mm (RS 60.100 OV - RS 60.300 OV) are used for ceiling and wall mounting. The cable trays are

Practices for grounding and bonding of cable trays

Grounding and bonding of cable trays There are three wiring options for providing an EGC in a cable tray wiring system: An EGC conductor in or on



CABLE TRAY SYSTEMS GUIDE

FEATURES Supports horizontal/vertical and overhead cable management Durable black or gray powder coat finish Supports UTP or fiber cabling Complete family of accessories includes: wall supports and



Network Cable Tray Systems: Choosing the Best

Investing in the right cable tray system is essential for creating a safe, organized, and scalable network infrastructure. Whether you're setting up a new office in the

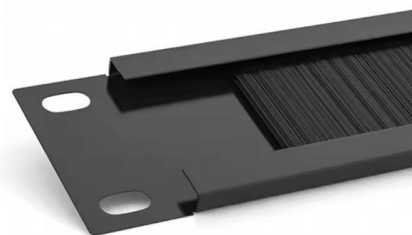


Cable Tray Technical Guide A practical guide to product selection and

Cable tray is considered to be a system. It must provide continuous support for cables, and the electrical continuity of the cable tray system must be maintained.

B-Line series Cable Tray Design Considerations

Our wind certification report provides you with list of acceptable B-Line series cable tray supports, fittings and covers based off of the environmental conditions, cable loading, and type of cable tray in your



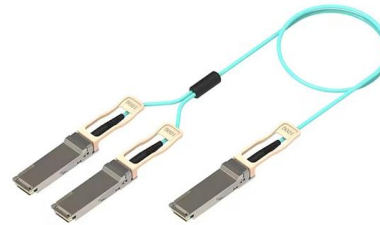


Cable Tray Installation

Learn everything about cable tray installation with our complete guide. Discover types, steps, and safety tips for efficient electrical cable management.

Ceiling Cable Tray, Cable Tray Electrical Manufacturer

NewReach's Ceiling Cable Tray is designed to simplify the process of adding or removing cables, making it easier to adapt to future changes and expansions in



LoRa handheld portable base station



Conceal wiring for safety in open-ceiling environments

Solid-bottom cable-tray systems are also available with service-pole adapters to run communications wiring down to open areas in retail and manufacturing

Best Practice Guide to Cable Ladder and Cable Tray Systems

This guide covers cable ladder systems, cable tray systems, channel support systems and associated supports intended for the support and accommodation of cables and possibly other electrical



Guide to cable support systems

Universal systems for cable support structures are used for small loads. The systems are suspended from the ceiling with threaded rods, stand-off brackets allow raised floor mounting of cable trays,



Workplace Design Elevated with our Cable Trays

Learn how to upgrade workplace design using Snake Tray cable trays, merging aesthetics & functionality in open ceiling spaces.



Guide to cable support systems

Four different mesh cable tray types are available, depending on the requirements, area of application and cable quantity. The innovative Magic connection system of the GRM and G-GRM mesh cable





Network cable management above t-bar ceilings

Cable trays would definitely be the way to go, but I would also look in to just hanging J-Hooks on the vertical bars. When I worked for an electrical



How to Install Cable Tray: A Comprehensive Guide to Different Cable

Welcome to our step-by-step guide on installing cable trays! In this video, we'll explore the different types of cable trays available and provide detailed instructions for their installation.

Cable Trays & Baskets , Electrical Cable Tray Solutions

Cable Trays & Baskets Electrical trays and cable baskets offer a secure open option for cable and wire routing. Cable electrical trays are a track that allows cables and wires to be routed throughout a



Contact Us

For datasheets, pricing, or custom telecom energy solutions, please visit:
<https://www.koskolong.co.za>