



Adam Tas Corridor Energy

Bidi optical module requirements for optical fibers



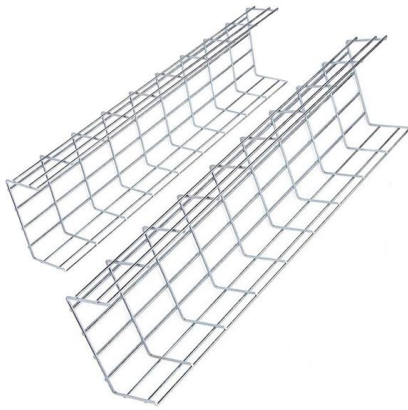


Overview

While specs vary by model, common BiDi SFP parameters include: Data Rates: 1 Gbps (SFP), 10 Gbps (SFP+), higher speeds with QSFP BiDi. A BiDi SFP module is a bidirectional fiber optic transceiver that enables simultaneous transmit and receive over a single strand of single-mode fiber, instead of the traditional two-fiber setup. In practical network deployments, this makes BiDi SFP modules a highly effective solution for. By reading this blog, you will understand how SFP BiDi technology allows you to save fiber, reduce costs, and simplify installation while enabling your network to increase. Traditional classic dual-fiber optical modules use a full-duplex LC interface, requiring two fibers to handle signal transmission and reception respectively.



Bidi optical module requirements for optical fibers



LC vs SC Connectors in BiDi SFP+ Modules: How to Pick the Right

When planning or upgrading a fiber optic network, engineers often prioritise speed, wavelength and transmission distance, but the interface type -- for example, whether the optical module uses LC or

What is BiDi Transceiver: A Beginner's Guide

What is a BiDi Transceiver? BiDi transceiver, or Bidirectional or simplex optical transceiver, is an optical module that uses Wavelength Division



BiDi Optical Modules: Unlocking Single-Fiber

Comprehensive guide on BiDi Optical modules, detailing single-fiber bidirectional connectivity, deployment tips, troubleshooting, and multi-speed

An Introduction to BiDi Optical Transceivers , FluxLight

Bi-Directional transceivers, called BiDi's for short, use two different wavelengths to achieve



transmission in both directions on just one fiber. The modules are deployed in pairs, one for the upstream ("U")



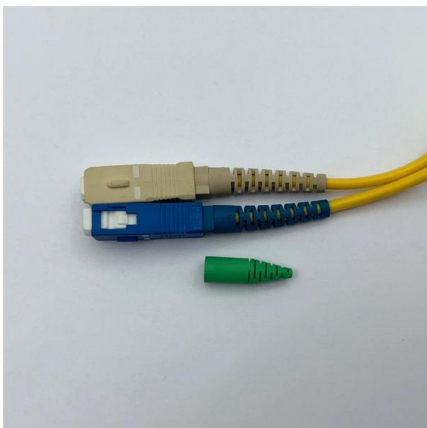
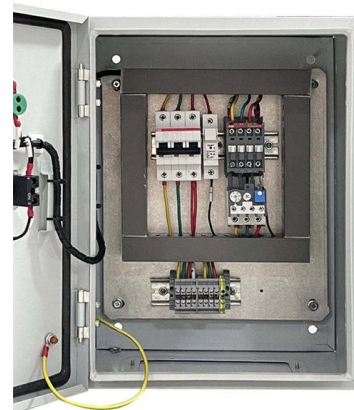
400G Optical Modules Explained: SR4 Vs. DR4 Vs. FR4

Key differences between SR4, DR4, FR4, and LR4 400G optical modules. Expert advice from Asterfusion engineers to optimize your data center



100G Bidi Guide: Avoiding Common Deployment Pitfalls

100G dual-fiber optical modules use a full-duplex LC optical interface, requiring two optical fibers to handle signal transmission and reception respectively. This results in lower signal



Transceivers, optical modules

RELIABLE SUPPLIER OF SFP MODULES Our SFP transceivers are compliant with the MSA (Multi-Source Agreement) Specification, as well as electrical and electromagnetic requirements.



How to choose the right optical module

Optical modules, as key components for achieving high-speed optical fiber communication, are being more widely applied in data centers, communication networks, cloud



BiDi SFP: The Complete Guide to Bidirectional SFP Transceivers and

Learn everything about BiDi SFP and BiDi fiber, including working principles, 1310nm/1550nm wavelength design, single fiber advantages, wiring diagrams, and key differences

BiDi SFP Module: A Complete Guide for Fiber Networks

A BiDi SFP module is a bidirectional fiber optic transceiver that enables simultaneous transmit and receive over a single strand of single-mode fiber, instead of the traditional two-fiber setup.



The Complete Guide to BiDi Transceiver

Unlike traditional optical modules that use separate fibers for transmitting and receiving data, BiDi modules accomplish this bidirectional data



BiDi 10G SFP: BXD/BXU Pairing & Brand Mismatch Audit

? Decoding the Fundamentals of BiDi 10G SFP Technology The architectural foundation of BiDi 10G SFP technology rests on the integration of a Bidirectional Optical Sub-Assembly (BOSA), which replaces



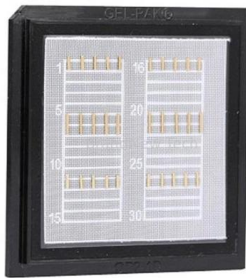
BiDi Transceivers Explained: Saving Fiber with Bidirectional Optics for

Distance Requirements: Confirm the maximum link distance and fiber type (single-mode vs multi-mode) to select appropriate BiDi optics with matching reach. Switch Compatibility: Ensure

The Essential Guide to BiDi Transceivers: Everything

Cost-Saving - BiDi modules eliminate the need for multiple cables and save money by achieving high density data transmission with minimal wiring.





BiDi Transceivers Explained: Saving Fiber with Bidirectional Optics for

Bidirectional transceivers, commonly known as BiDi SFP+ modules, offer a clever solution to fiber optic infrastructure challenges by transmitting and receiving data over a single fiber

Compatibility Analysis of Optical Modules: Covering Global

25G BiDi ZR module: single-fiber bidirectional transmission, saving optical fiber resources, compatible with Huawei and ZTE base station equipment, and supports 80km ultra-long



What is the BiDi Fiber Optical Transceives and How to

How to Choose two Different Types of Transceivers? The single-fiber BiDi optical module is more expensive, but it saves fiber resources and only

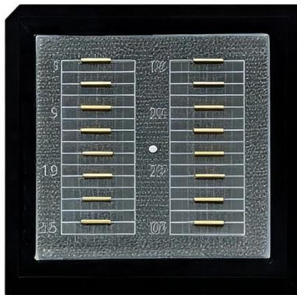
100G QSFP28 Single Fiber (BiDi) Modules: Technology, Benefits

Single fiber QSFP28 modules (commonly called BiDi transceivers) enable full-duplex 100G communication over a single optical strand. They do this by using Wavelength Division



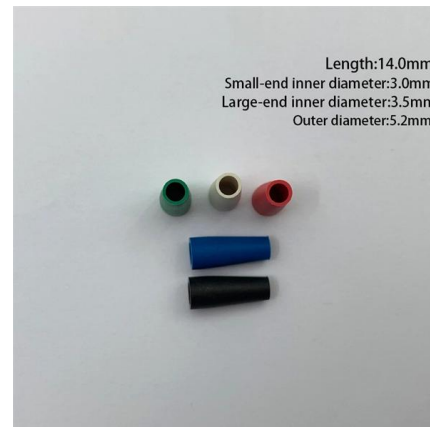
BiDi SFP Module: A Complete Guide for Fiber Networks

Learn what a BiDi SFP module is, how it works, key types, benefits, and when to use BiDi optics in fiber networks.



Considerations on 100G and 200G Bidi Optics

oTechnical situation faced by this TF is more complicated than the previous 802.3cp project, where 10/25/50G bidi optics each has a best single lambda choice available.



Optical Transceivers , Coherent

Get the pluggable module performance you need from the manufacturer of choice for all major networking equipment vendors worldwide.



SFP Optical Transceiver , SFP Optical Module , Perle

Perle SFP Optical Transceivers are hot-swappable, compact media connectors that provide instant fiber connectivity for your networking gear. They are a cost



Guide to 10G BiDi SFP+ Optical Transceivers Modules(2025)

In this guide, we dive into Fibrecross's portfolio of 10G SFP+ Optical Transceivers, explain how BiDi optics work, compare module options, and share best practices for deployment.

What is a Bidi Transceiver? A Complete Guide

Unlike the standard dual-fiber modules requiring two fibers, one for Tx and one for Rx, a Bidi transceiver uses only a single fiber to support two-way



Contact Us

For datasheets, pricing, or custom telecom energy solutions, please visit: <https://www.koskolong.co.za>