



Adam Tas Corridor Energy

Body load capacity of communication equipment room batteries





Body load capacity of communication equipment room batteries

NFPA 70 and NFPA 70E Battery-Related Codes Update

Abstract Two code documents have a dramatic impact on the acceptance or rejection of a battery installation by an inspector. These are the National Electrical Code (NEC /NFPA 70)1 and the



Finding the Right Battery System for Your Telecom Site:

Capacity: Determine the capacity of the battery system based on the site's load requirements and the expected duration of backup power needed



Battery Room Design and Safety Standards

This document outlines design requirements for battery rooms containing vented lead acid batteries. It specifies that battery rooms must be properly ventilated,



Finding the Right Battery System for Your Telecom Site:

To ensure uninterrupted communication services, it's crucial to have a reliable and



efficient backup power system in place. We will guide you through



Telecom Cabinet Power System and Telecom Batteries

By understanding the methods for calculating battery capacity, charge/discharge rates, and cycle life, you can optimize the performance of your



Lithium-ion Battery For Communication Energy Storage System

With a low energy-to-weight ratio and volume ratio, heavy battery weight, large volume, and large footprint, the valve regulated lead acid battery has a high requirement for floor load bearing



How to Accurately Size Batteries for Telecom Systems Using a

Telecom battery sizing calculators determine the correct battery capacity needed to power telecom infrastructure during outages. These tools factor in load requirements, autonomy time, temperature,





Battery Room

Battery Room In subject area: Engineering A battery room is defined as a designated area for backup and uninterruptible power supplies (UPS) that houses large lead storage batteries, typically located



Safety Conditions in Battery Rooms for Renewable Energy Systems

Abstract This chapter analyzes the safety conditions in battery rooms for renewable energy installations, focusing on sizing, ventilation, and classification according to the ATEX directive.

Types of Batteries Used in Telecom: A Practical Guide

Choosing the right type of battery is not a one-size-fits-all decision. It depends on climate, installation environment, load demands, maintenance



BATTERY ROOM REGULATIONS AND SAFETY

There are many different rules, regulations and standards affecting stationary battery selection, installation, operation and maintenance. Some of these address the battery while others address the



Optimizing Telecommunications Spaces : Sizing

Telecommunications spaces are the backbone of structured cabling systems in commercial buildings. Proper sizing and layout are critical for functionality,



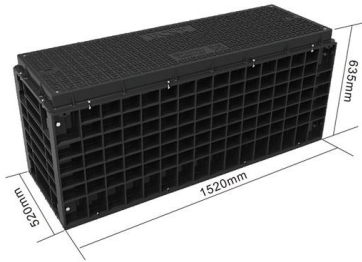
Battery Room Safety Standards Guide

This document provides standards for battery room design and operation. It outlines requirements for civil construction including fire resistance of walls and floors, as

Do Lithium Ion Batteries Require a Battery Room? Storage

Lithium-ion batteries need a battery room if their capacity exceeds 20 kWh, according to fire codes. NFPA 855 outlines ventilation and safety requirements.





Annex 1

For guidance, the nominal battery capacity to comply with the minimum capacity requirements at all times is 1.4 times the load determined in paragraph 2.4 multiplied by the intended period of operation

White Paper on Lithium Batteries for Telecom Sites

This white paper provides an overview for lithium batteries focusing more on lithium iron phosphate (LFP) technology application in the telecom industry, and contributes to ensuring safety across the



How to Build a Battery Room for Lithium-ion, Traction,

Build a safe, efficient battery room for lead-acid, lithium-ion & EV batteries. Learn layout, ventilation & charging tips to maximise safety &

Guidance on the Safety of BESS on board ships

FR 1 The battery room should only contain equipment associated with the BESS, minimizing the risk of increased temperature, fire, liquid leakages, condensation, dust and presence of other hazardous



Annex A

In general, amendments to operational methods or procedures shall not be accepted as an alternative to the safe design of a battery system and its installation in a vessel, whether this be regarding location,



Designing Rugged, Thermally Stable Batteries for

Designing batteries for military and emergency communication systems demands meticulous attention to chemistry, packaging, thermal control,



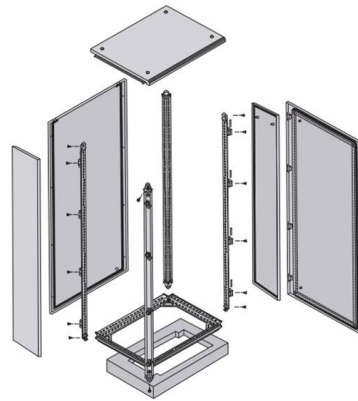
Comprehensive Guide to Telecom Batteries

Telecom batteries play a crucial role in powering equipment, supporting backup systems, and facilitating smooth operations. This comprehensive guide will delve into the types of telecom



Types of Batteries Used in Telecom Systems: A Guide

Telecom systems play a crucial role in keeping our world connected. From mobile phones to internet service providers, these networks need reliable



How to Choose the Right Battery for Your Communication Equipment

In this blog, we will walk you through the key considerations for a Communication Equipment System Battery, enabling you to make an informed choice that supports the life and performance of your

Telecom Battery Sizing: How to Calculate Backup Power Capacity for

In this guide, we explain how telecom battery sizing works, how engineers calculate battery capacity for network equipment, and what factors must be considered when designing



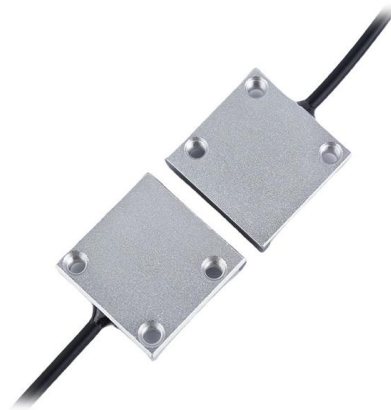
COMMUNICATION SITE BUILDING DESIGN AND INSTALLATION

When determining equipment placement in an existing structure or when developing building specifications for an equipment shelter, attention shall be given to the Structural Live Load capacity



Telecommunications Rooms 101

A comprehensive guide to understanding the importance and best practices of telecommunications rooms in building technology, ensuring reliable and efficient data transmission.



Telecom Battery Requirements for Indoor Equipment Rooms

This article outlines the key requirements for telecom batteries used in indoor equipment rooms, with a focus on system design considerations rather than specific battery chemistries.

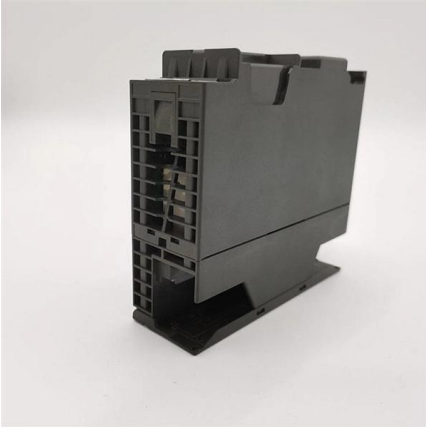
Telecommunication Battery

Large base stations typically have dedicated battery rooms or cabinets, using large-capacity (e.g., 500Ah, 1000Ah) 2V lead-acid battery packs



White Paper on Lithium Batteries for Telecom Sites

There are various types of batteries for telecom sites, including the lead-acid battery and lithium-ion battery. These types of batteries may differ in energy density, charge and discharge efficiency, as



D60 -Communications Equipment Room

The Communications Equipment room Facilities Standard establishes a series of guidelines for specifying this particular item on any construction project at the University. This Facilities Standard is



Contact Us

For datasheets, pricing, or custom telecom energy solutions, please visit:
<https://www.koskolong.co.za>