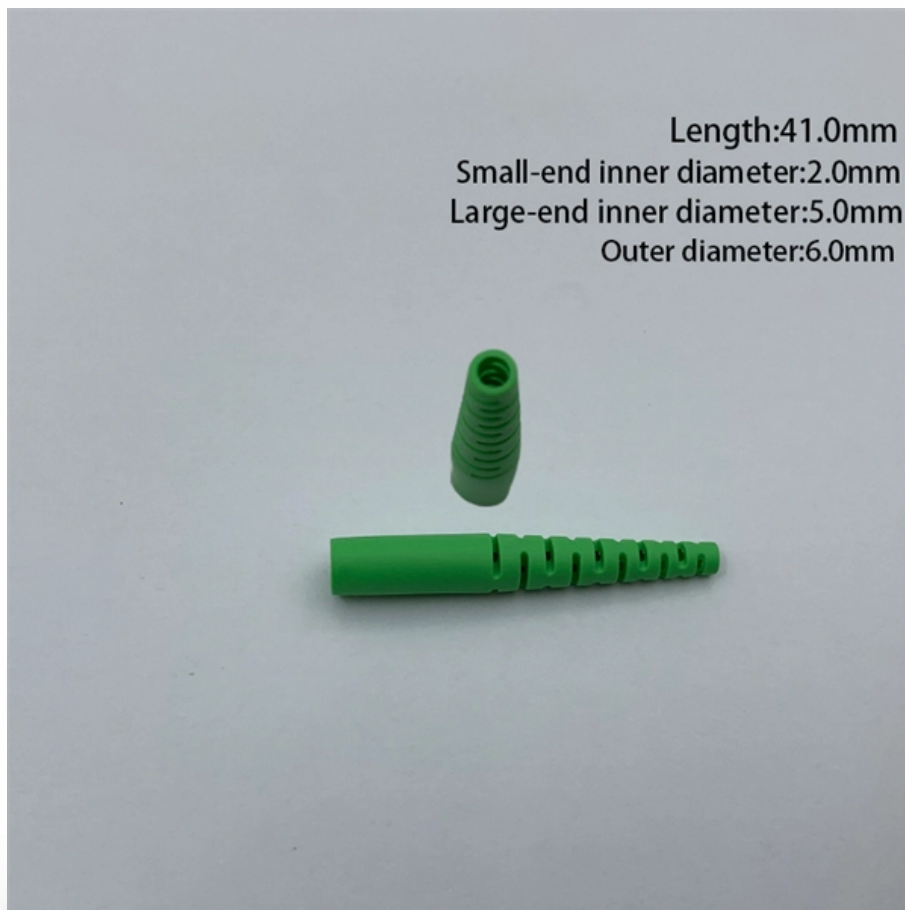




Adam Tas Corridor Energy

Brazil Direct-Buried Well Logging Fiber Optic Cable Connector





Brazil Direct-Buried Well Logging Fiber Optic Cable Connector



Buried Installation of Optic Fiber Cable: Application Notes

Application Notes Buried Installation of Optic Fiber Cable Issued November 2013 Abstract Buried cable is a kind of communications cable which is especially

Distributed Fiber Optic Vibration Signal Logging Well

However, the currently distributed fiber optic vibration signal logging also fails to fully utilize the technical advantages to form a systematic production



Production logging via coiled tubing fiber optic

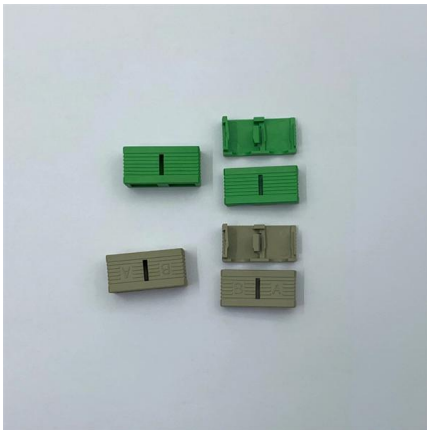
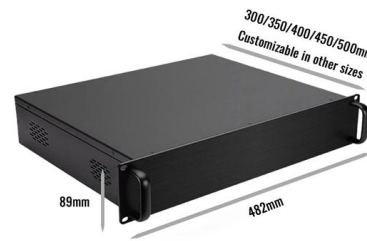
Photoelectric signal converter It can connect the cable production logging platform without replacing the coiled tubing with cable and other cable logging equipment.

Brazil Underwater Fiber Optic Connector Market Demand Forecast

The Brazil Underwater Fiber Optic Connector Market market is comprehensively segmented by



product type, application, end-use industry, and region, providing a detailed view of

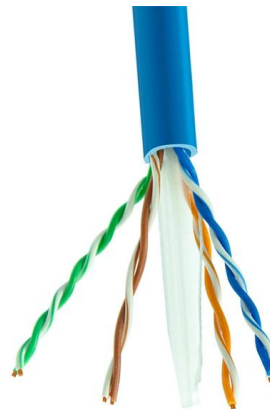


Enhancing Production Profiling with Fiber Optic Technology

By using slickline cable, risks associated with tool lift and wellbore debris were effectively mitigated, preventing the utilization of conventional PLT strings.

Brazil Directly Buried Cable Market Size and Forecasts 2031

Rising investments in underground cabling for telecommunications, power distribution, and data infrastructure are fueling market expansion. Direct burial cables are designed to withstand



The High-Temperature Resistant Well Logging Optical Cable

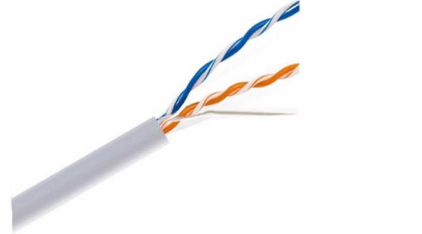
The range of cables for direct buried installation includes all our four basic designs: concentric core, grooved core tape, DryTech and tape in loose tubes. The cables are reinforced with corrugated steel





Direct Buried Fiber Optic Cables , Optical

Designed to meet the demands of today's data-intensive world, these cables are comprised of multiple optical fibers bundles in a flat ribbon format that is high



Direct Buried Fiber Optic Cable

Whether it's a solid armored fiber optic cable buried directly in the ground, or a conduit that can pass anything, a direct burial fiber optic cable is an ideal

Cable Logging? Optical Fiber Logging?--JASON is

Utilize optical fiber sensor instead of electrical-based sensor for logging operations, and use optical fiber composite loaded detection cable or optical fiber goes



Well Logging with Carina 100Xlog Fiber Optic , Silixa Ltd.

Carina 100Xlog is a high-efficiency retrievable fibre optic well logging service that visualizes entire well dynamics in real-time much more rapidly than conventional



Bazaid et al No 1

Common well integrity problems where fiber optics can be effectively deployed include identifying sources of sustained annulus pressure, confirming packer integrity, pinpointing leak locations, and



Well and Reservoir Surveillance Using Permanent Distributed Fiber

This paper investigates the state-of-the-art of Distributed Fiber Optic Sensing technologies applied to the surveillance of offshore wells and reservoirs. It highlights reported

Direct Burial Fiber Optic Cable Market in Brazil , Report

Demand for direct burial fiber optic cable in Brazil is segmented by cable type, application, and end-use sector. By cable type, single-mode direct burial cables dominate with an





Direct-Buried Installation of Fiber Optic Cable

2.3. Direct-buried installations are often combined with duct installations to go under obstacles like roads, driveways, etc. At the transition point between the direct-buried section and the conduit, the

Fiber-Optic Technology Reduces Production Logging

The new technique uses coiled tubing equipped with optical fibers to acquire real-time measurements from the downhole logging string. The advantages of this conveyance option include



Well and reservoir surveillance , FOWell , FEBUS Optics

FOWell, a distributed fiber optic sensing well monitoring solution, enables for real-time detection of leaks or deformations in the tubing or casing structure.



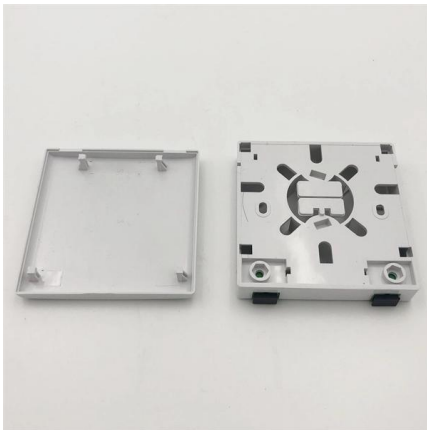
Direct Buried Fiber Optic Cables , Optical

Loose tube fiber optic cables are high-density, lightweight, and durable for easy handling and installations. They contain buffer tubes with either 12 or 24 single



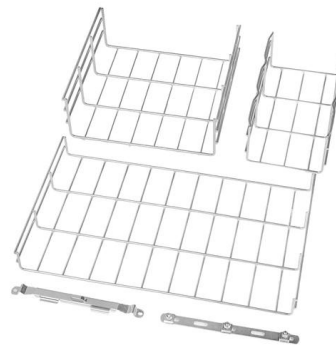
Downhole Fiber Optic Cable , Fibercore

Fibercore offers a range of designs for downhole fiber optic cable to meet the specific requirements of your oil or gas well. These types of cables are permanently



Optical fiber logging cable Special cable

Optical fiber logging cable enables the transmission of detailed data over long distances, making it an essential component in oilfield service



Brazil Directly Buried Cable Market Size and Forecasts 2031

By 2031, the Brazil Directly Buried Cable Market will evolve toward higher voltage capacities, hybrid fiber solutions, and eco-friendly insulation technologies.



Reducing Intervention in Subsea Wells With Fiber-Optic

Fiber-optic-system installations have reduced the need for intervention by logging tools and have given crucial insights into wellbore integrity and



Bazaid et al No 1

Fiber-optic wireline/slickline/coiled tubing conveyed through tubing Fiber-optic cable clamped outside screens (Fig. 6b): This is challenging when completions are multistage as a downhole wet connect is

Buried Installation of Optic Fiber Cable

2. Introduction Buried plant is usually placed into a narrow trench or plowed directly in the ground. Sometimes a fiber cable is placed in an open trench with several empty sub-ducts for use when



Well logging with Carina 100Xlog, retrievable fibre optic

Optimize well placement and completion design using Silixa's fiber-optic surveillance for fractured reservoirs.



150M Direct-Burial Fiber Optic Cable

Underground Cables without Conduits Direct-burial fiber optic cables can be directly buried in the ground, which eliminates the need for additional protective conduits



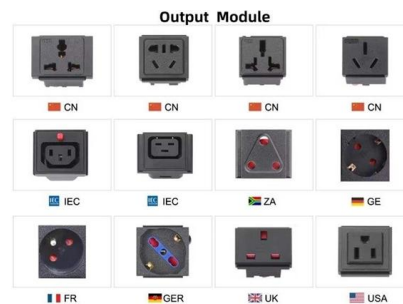
The FOA Reference For Fiber Optics -Outside Plant

Typically, optical fiber cables do not carry electrical power, but the metallic components of a conductive cable are capable of transmitting current. When the



A High Data Rate Fiber Optic Well Logging Cable

This development has led to a new logging cable with superior mechanical properties, containing eight electrical wires and three optical fibers with a data rate of at least 10 Mbits/ second each. This fiber



Why Choose Us

- 20 Years of OEM/ODM**
20 Years factory manufacturing experience.
- Professional R & D team**
10-years appearance/rework/ electronic engineer.
- Fully Certified**
Our are certified: CE,UL,IEV, ISO9001,ISO13485, etc.
- Timely Delivery**
21 production lines, 500+ employees, timely delivery guaranteed.
- Quality Assurance**
Professional QC team with full process inspection.
- After-sales service**
After Sales Service and Customer Satisfaction.



5 rules for placing fiber-optic cable in underground plant



OFS notes that innerduct may be direct buried or placed in larger diameter conduits. Or in some applications, the innerduct may be lashed to an aerial strand. The

CT logging service leverages powers of fiber-optic

The fiber-optic telemetry allows the BHA to communicate with the logging system, which provides real-time production logging data from the coiled



Contact Us

For datasheets, pricing, or custom telecom energy solutions, please visit:
<https://www.koskolong.co.za>