



**Adam Tas Corridor Energy**

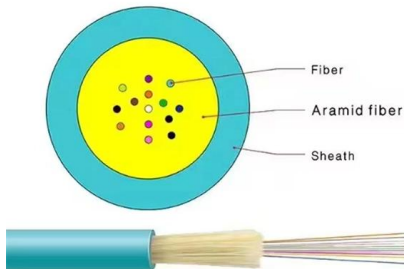
# **Busway Connection Box High Voltage Busbar**





## Busway Connection Box High Voltage Busbar

---

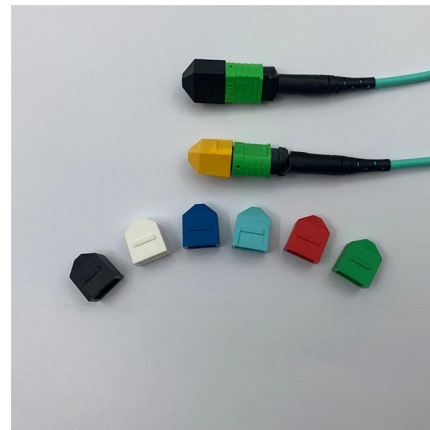


### Vertiv(TM) Powerbar , Busway and Busduct

Add and remove tap off boxes with ease Make changes and scale up in a cost-efficient and timely manner We take pride in catering to top data center players

### Busway Systems

A complete power solution for transformer to main panel board connections. Vertiv(TM) PowerBar HPB is a 1000V totally encased, non-ventilated and low impedance busbar.



### Busbar Systems

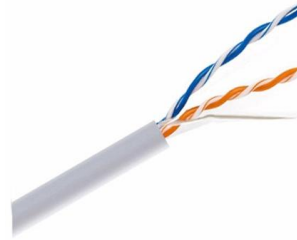
Providing an extremely cost-effective alternative to HV cable connections, our GKW Busduct is supplied in pre-assembled modules and is ideal for connections

### Flexible tiered busbar enclosure for high current application

Flexible tiered busbar enclosure for high current application in hazardous areas. Stainless steel ex-



rated junction box with ATEX & IECEx approval.



### **Busbar enclosure for temporary power & high current**

Suitable for connectors over 400mm<sup>2</sup>, the enclosure can connect three-phase plus neutral supplied with up to six conductors per phase. Manufactured from 316L

### **High-voltage Busbar**

Robust HV busbar and enclosed busbar solutions up to 35kV, designed for substations, mining, and offshore platforms. Dust-proof, moisture-resistant, and compliant with IEC/ANSI standards.



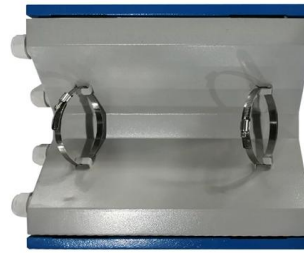
### **What is the difference between a busbar and a busway?**

A busbar is the conductive metal strip (usually copper or aluminum) inside electrical equipment like panels or switchgear. A busway (or bus duct) is a prefabricated,



## High Voltage Busbars

To connect various high voltage (HV) components to the HV system, we also deliver a wide variety of busbars. In cooperation with the customer, these can also feature our Bus Bar Insulation Tubing (BBIT).

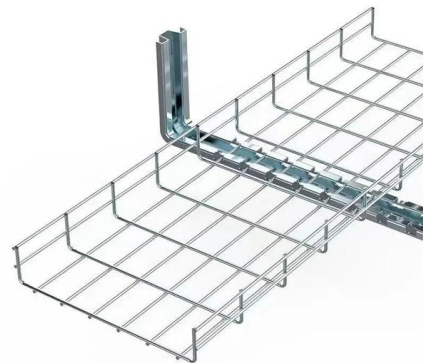


## What is Busbar? Types, Advantages (2026 Updated Guide)

Advantage of Electrical Busbar Busbars are often preferred over cable wiring. Some key roles include: 1. Simplified Power Distribution: Busbars

## Why Renewable Energy Plants Are Replacing Traditional Power

From sprawling solar farms to offshore wind parks and battery energy storage systems (BESS), the demand for high-current transmission is rising. Increasingly, engineers are moving away from



## Understanding Electrical Busbars: Types and Applications

Learn what electrical busbars are, their key types, voltage ranges, and how they improve efficiency and safety in modern power distribution systems.



## High-Current High-Voltage Solutions

Molex provides a versatile range of high-current high-voltage busbar solutions suitable for various applications and environments. Busbars and busbar



## Optimizing Data Center Power Distribution Through Innovative Busway

Busway is an alternative to traditional PDU and RPP power distribution. Modern busway power distribution architecture typically includes an end feed unit connected to an upstream LV electrical

## Busbar & Busway , Legrand Data Center Solutions English

Unleash the power of efficient and flexible power distribution with our innovative busbar and busway solutions. Streamline your electrical infrastructure with these





## High Power Busway

The systems' enclosed design provides a high level of reliability, protection, and safety in mission critical environments. High Power Busway systems are compact, maximizing space efficiency and reducing



## Busbar Systems

We are one of the most experienced busbar manufacturing and installation companies in the UK. Currently we're the only one that designs, manufactures,



## Busway , ABB Electrification U.S.

Busway NEMA defines a busway as a prefabricated electrical distribution system consisting of bus bars in a protective enclosure, including straight lengths, fittings, devices and accessories. In electric

## Powerbus Plug-in Busway

Powerbus(TM) plug-in busway, manufactured by Schneider Electric, was designed specifically to address the low power distribution needs of industrial and commercial customers.



### FTTH BOOK-TYPE TERMINAL BOX

Sleek Design. Reliable Connectivity.



COMPACT & DURABLE

EASY INSTALLATION

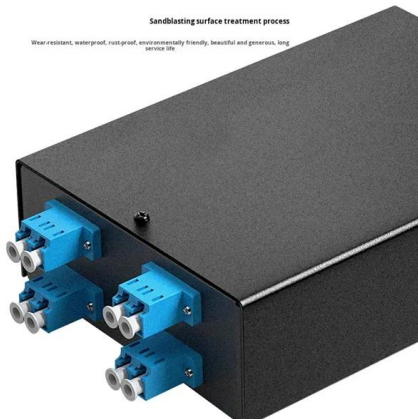
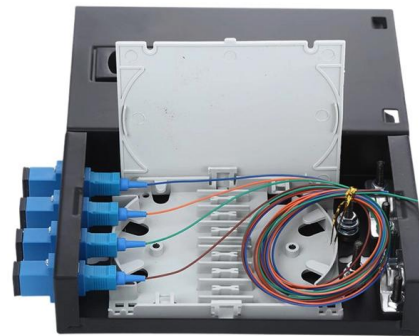
### Busbar enclosure for temporary power & high current

Hazardous Area Busbar enclosure for 3kA  
Designed to accommodate inflexible high current cables, the BusBar Box can safely terminate conductors up to 3200 amps



### Square D I-Line and Power-Zone Busway Systems Catalog

Square D I-Line and Power-Zone Busway Systems Catalog This catalog includes information on features, construction, application, installation,



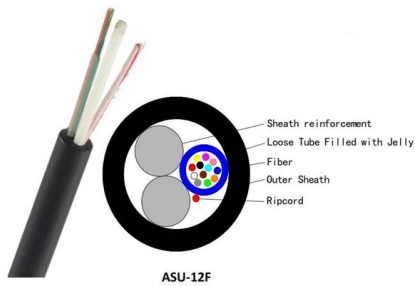
### Busbars

Available in copper and aluminum, sheet, bar and rod form options. Feature braided cables that provide flexibility. Available in rounded rope braids that offer 360



## Busbars for High-Voltage Power Systems: The Key to

High Voltage Custom Copper BusBars  
Introduction High-voltage power systems form the backbone of the modern economy, ensuring the efficient



## High Voltage Busbars by Intercable Automotive Solutions

One of the signature products developed by Intercable Automotive Solutions are our custom made high-voltage busbars manufactured to client specifications. Busbars

## Electrical busway system , low

Track busway is a continuous rail design where tap-off boxes can be installed or removed nearly anywhere along the busway system. The tap-off boxes come equipped with cord whips and fixed



## Busbar Systems , Power Busbars , EAE Electric

Power Busbar Systems are designed for the safe transport and distribution of electrical energy, ranging from 32A to 6300A, ensuring efficiency and reliability.



## 2CDC446001D0201

Technical data Busbar systems and installation accessories When connecting aluminum conductors, ensure that the contact surfaces of the conductors are cleaned, brushed and treated with grease. Re



### **Flexible Busbar Solution for High Current Density Applications**

This paper discusses the advantages and limitations of cable connections, rigid bus bar connection and flexible bus bar connections for high current density applications.

## **Contact Us**

---

For datasheets, pricing, or custom telecom energy solutions, please visit:  
<https://www.koskolong.co.za>