



**Adam Tas Corridor Energy**

# **C5 Channel Steel Cable Tray Support**





## C5 Channel Steel Cable Tray Support

---



### Guide to cable support systems

The load capacity of the cable trays according to the support width can be read off in the diagram using load curves - here, shown as an example for a cable tray with the tray widths 100 to 600 mm.

### Cable Tray Support Systems

Manufacturer of Cable Tray Support Systems - Cable Tray Fittings, C1 Channels, C2 Channel and C Channels offered by Premier Steel & Galvanizers Pvt. Ltd., New



### Steel Basket Tray , Strong And Reliable Cable Support

Built for strength and durability, these trays provide secure support for cables while allowing ventilation to prevent overheating. Ideal for heavy-duty installations, they



### Cable Tray Support Channel , Toros Engineering

Secure and streamline cable management with our Cable Tray Support Channel. Simplify



installation for an organized and efficient setup.



## C-CHANNEL AND ACCESSORIES

ISP -Support Systems ISP - Integrated Steel Plant Cable Tray Support System Produces Various Kinds Of Support Systems In Accordance With BS 6946:1988.

## Cable Tray Technical Guide A practical guide to product selection and

SOLID-BOTTOM CABLE TRAY Providing additional cable protection, solid-bottom cable tray is sometimes preferred to support and protect numerous small instrumentation and control cables.



## Unistrut Channel

Unistrut channels are versatile support systems used in cable tray installations, piping frameworks, HVAC, and solar mounting structures. Known for their



## Steel Cable Tray , Strong And Reliable Cable

Steel cable trays offer a practical and durable solution for cable management in industrial and commercial applications. Built from high-quality materials, these



## Cable Management Support Systems

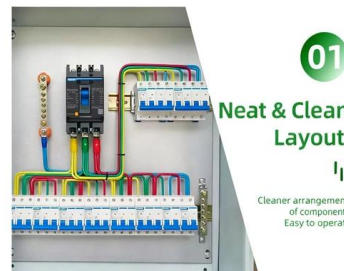
Cable Support Systems are well designed to provide necessary support for cable trays, cable ladders and trunkings. Cable supports are manufactured according to

## Best Practice Guide to Cable Ladder and Cable Tray Systems

This publication is intended as a practical guide for the proper and safe\* installation of cable ladder systems, cable tray systems, channel support systems and associated supports.

### DETAILS DISPLAY

Focus On Every Detail



## High-Quality Cable Tray Systems , Light, Medium

Explore our premium cable tray systems at Direct Channel. Available in light, medium, and heavy-duty options, with pre-galvanized & hot-dipped finishes.



## Channel Cable Tray Manufacturer and Supplier in China

Premier Channel Cable Tray Supplier in China  
Our wide array of channel cable trays can support cables due to its high loading capacity, beautiful appearance, and



## Beama Best Practice Guide , Installation Of The System , Cable

The following recommendations are intended to be a practical guide to ensure the safe and proper installation of cable ladder and cable tray systems and channel support and other support systems.

## C Channel/Uni-Strut Channel/Support Channel

These fittings are used in conjunction with cable trays to support cables in ventilation holes, assist with directional change of piping systems, and cable channeling



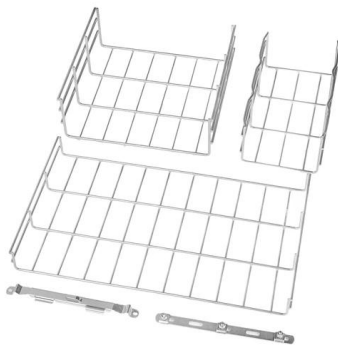


## C Series

The C Series is a non-penetrating rooftop support designed to support gas and refrigeration piping, cable trays, electrical conduit, HVAC equipment, and multiple

## Channel & Support Systems

The Aitkens range of Channel Support Systems, are provided to supply an economical, flexible and efficient method of universal support and fixing for cable



## C-Channel Cable Trays

Features 1. Cable support: Provides a secure platform for cables. 2. Easy installation: Designed for straightforward installation. 3. Flexibility: Available in various sizes and configurations. Applications 1.

## The complete Kabelschlepp (2024/26)

Support trays An even surface is required for reliable unrolling of the unsupported cable carrier. If this is not already provided on site, a support tray has to be used. If required, we supply our cable carriers

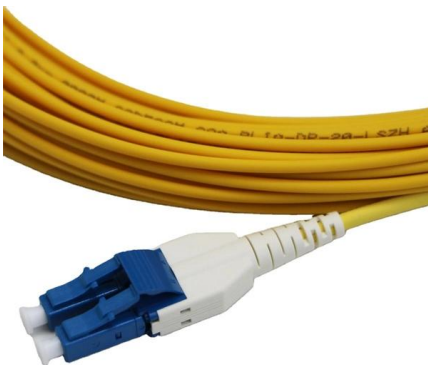


### **C Channel for Cable Tray Support , Ajay Industrial**

High-strength C channels for supporting cable trays. Available in various sizes and materials for industrial, structural, and heavy-duty applications.

### **C Channel Strut Cable Tray Ceiling**

C Channel Strut Cable Tray Ceiling Product  
Item:TPWGA009 Mounting the wire tray by using threaded rod with hold down plate,hanging from ceiling. Matching



### **C5 Rubber Support with Raised 1 5/8" Galvanized Steel**

C510 & C6 Rubber Support with Raised 1 5/8" Galvanized Steel Channel to support of gas and refrigeration piping systems, cable tray, etc.



## Cable Management Support Systems

Cable Management Support Systems Cable Support Systems are well designed to provide necessary support for cable trays, cable ladders and trunkings. Cable



## Cable Tray Support Systems, Supplier, India

We are Manufacturer, Supplier, Exporter of Cable Trays, Cable Tray Support Systems, Horizontal Bend for Cable Trays, from Pune, Maharashtra, India.

## Channel Support Systems & Cantilever Arms

Browse our channel support systems & cantilever arms for electrical conduit runs & cable trays. IN STOCK & FREE next-day delivery over £100 ex VAT.



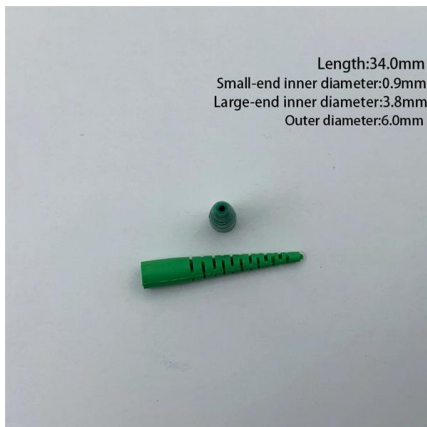
## Galvanized Steel Channel UAE , C Channel Galvanized

Discover high-strength galvanized steel channels from a trusted UAE supplier. Custom sizes and delivery are available for cable trays and support systems



## Unistrut Channel Cable Tray Support

Unistrut Channel Cable Tray Support is a specially designed system that offers a strong and flexible framework for organizing and supporting cables.



## Master Your Cable Tray Installation with These

Tired of struggling with cable tray installations? At Direct Channel we have the perfect range of brackets and supports to make things much easier. From wall to

## Contact Us

For datasheets, pricing, or custom telecom energy solutions, please visit:  
<https://www.koskolong.co.za>