



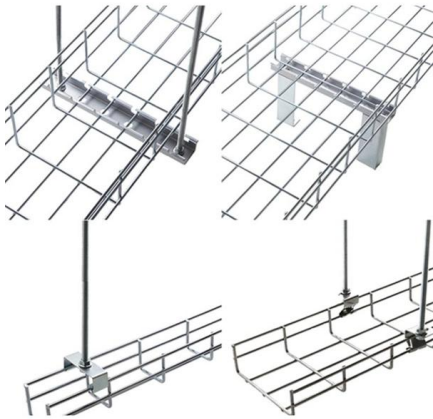
Adam Tas Corridor Energy

Cable Tray Installation Procedure Diagram





Cable Tray Installation Procedure Diagram



Cable Tray Installation Procedure Guide

This document provides procedures for installing cable trays according to international standards.

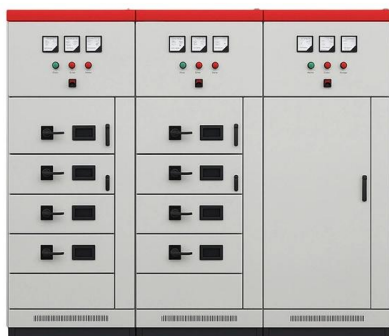
INSTALLATION GUIDE

To ensure that the complete ladder tray wiring system performs as designed, it is important that it is properly installed. Personal injury as well as property damage will result if proper installation and



Cable Tray and Conduit Installation Method Statement

Step-by-step cable tray and conduit installation method with safety, quality and inspection procedures as per IEEE standards.



Cable Tray Installation

Whether you're building a commercial setup or upgrading an industrial plant, proper cable tray installation ensures neat wiring, safe access, and



easy maintenance. But before you lay the first tray



Method Statement installation of Cable Trays and Ladders

This method statement covers the site installation of the cable tray & ladders and the requirements of checks to be carried out.

Cable tray manual

Nearly every aspect of cable tray design and installation has been explored for the use of the reader. If a topic has not been covered sufficiently to answer a specific question or if additional information is



Cable Tray and Trunking Installation Guide

Method Statement for Installation of Cable Tray or Trunking - Free download as PDF File (.pdf), Text File (.txt) or read online for free.





INSTALLATION GUIDE

Center hung tray supports allow for quicker and easier cable installation by allowing cables to be deposited into tray systems from each side. There is a maximum load capacity per hanger of 318 kg



Cable Tray Installation 211215 , PPTX

The document provides information about cable tray systems, including: - The six main types of cable trays: ladder, solid bottom, trough, channel, wire mesh, and

Cable Tray Installation Procedure Guide

The document outlines the procedure for installing cable trays, including essential tools, equipment, and safety measures. It emphasizes the importance of thorough



Cable Tray Installation Method Statement

This document provides a method statement for installing cable trays and trunking systems for building electrical services. It outlines 14 steps for the installation



Cable tray manual

These documents: ANSI/NEMA VE-1, Metal Cable Tray Systems; NEMA VE-2, Cable Tray Installation Guidelines; and NEMA FG-1, Non Metallic Cable Tray Systems, are an excellent industry resource in



DIY Installation: Mastering Light Duty Cable Tray Setup

Explore our comprehensive DIY guide to master the installation of light-duty cable trays. From planning to cable organization, follow step-by-step instructions for a tidy and efficient cable

Cable Tray Installation Method Statement , PDF

This document provides the method statement for installing cable trays and ladders at a data center project site. It outlines the scope, materials, equipment,





Cable Tray Installation Guidelines , PDF , Galvanization

This document provides details on installing cable trays and their support systems. It includes diagrams showing how to mount cable trays on walls using pre

Cable Tray Technical Guide A practical guide to product selection and

Cable tray length is selected based on the load to be supported, the distance between the supports (also referred to as the span), and handling and installation constraints.



Instrumentation Cable Tray Installation Checklist and

Step-by-step instrumentation cable tray installation guide with safety tips, standards, inspections, and downloadable Excel checklist.



Complete cable tray manual for electrical engineers and

Complete cable tray manual for electrical engineers and designers (on photo: power cable management ladder tray systems assembled aluminum cable tray ladder

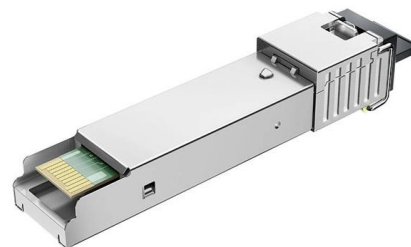


Cable Tray Installation Method Statement

The document provides guidelines for installing cable trays at project sites in 3 steps: (1) receiving and storing material, (2) installation procedure, and (3) precautions.

Best Practice Guide to Cable Ladder and Cable Tray Systems

This publication is intended as a practical guide for the proper and safe* installation of cable ladder systems, cable tray systems, channel support systems and associated supports.



Best Practice Guide to Cable Ladder and Cable Tray Systems

Introduction This publication is intended as a practical guide for the proper and safe* installation of cable ladder systems, cable tray systems, channel support systems and associated supports.



CABLE TRAY INSTALLATION PROCEDURE

CABLE TRAY INSTALLATION PROCEDURE / METHOD STATEMENT 1. All cable trays & accessories received at site shall be inspected, handled and stored upon

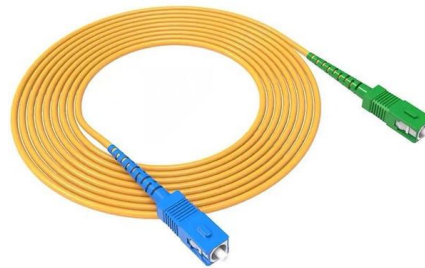


Cable Tray Technical Guide A practical guide to product selection and

A practical guide to product selection and installation This guide for engineers and installers has been developed by ABB as a practical reference regarding cable tray characteristics, installation, and

Fiber Cable Tray System

Installation and maintenance of cable tray wiring systems should be performed by a minimum of two qualified technicians. For the purposes of this guideline, a qualified technician is one who is familiar



Method Statement installation of Cable Trays and Ladders

The Cable Tray system is installed in electrical rooms, plant rooms, and service corridors. This section will guide you through the necessary steps to



Best Practices for Installing Cables in Trays

Learn the best practices for installing cables in trays. This guide covers essential steps, technical requirements, and key details



Cable Tray Installation Procedure Guide

The document outlines the installation procedure for cable trays which includes: 1) Ensuring the work area is prepared according to specifications and standards



Contact Us

For datasheets, pricing, or custom telecom energy solutions, please visit:
<https://www.koskolong.co.za>