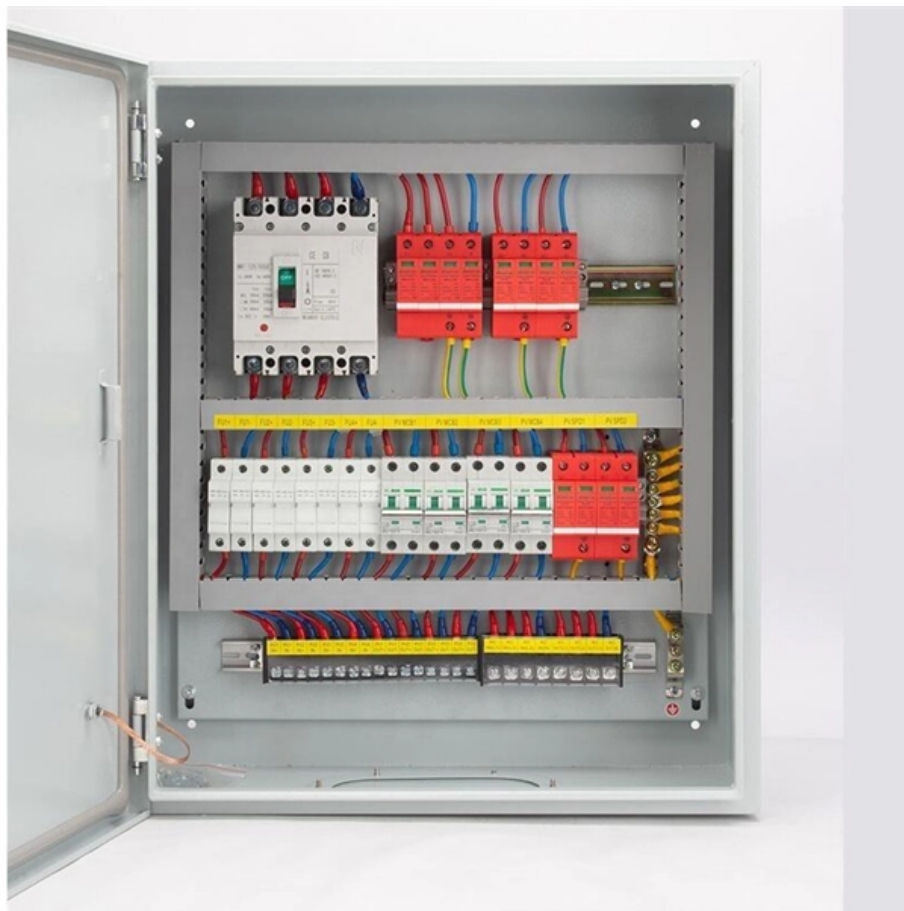




Adam Tas Corridor Energy

Cable routing frame cross binding in the computer room





Cable routing frame cross binding in the computer room



How to Route Cables Behind Your Desk

To route cables behind your desk, start by assessing your cable needs and planning an organized route. Gather necessary tools like cable clips,

Planning Your Office Network: Cable Routing and

Furthermore, correct cable management improves airflow and cooling in your server room or network closet. Investing time in planning your cable routing and



Structured Cabling, Grounding & Equipotential Bonding

Excessive crushing of the cables (e.g. due to cable ties) and severe traction on the cable ends must be avoided. The twisting of the single cable pairs should be maintained as far as possible.

Elements of a Structured Cabling System

Use appropriate cable routing and dressing fixtures in the wiring closet to eliminate stress



caused by tension and to effectively organize cables. Backbone cabling is the structured cabling element that



Wiring Plans

This chapter covers structured wiring and methods of routing it from equipment rooms to desktops. It also discusses types of wire and cable, equipment rooms and telecommunications pathways and



Best practices for underfloor cable management

Good cable organization ensures optimal performance and simplifies cable maintenance, reducing downtime. All cables should be supported in cable tray that is run overhead, above the equipment or



Rack Dressing and Arrangement: Effortless Cable

Discover expert techniques implemented by Texas Systems, for effective rack dressing and cable arrangement to optimize your setup.





Structured Cabling Specifications and Standards

Backbone cabling consists of not only the cables that connect the telecommunications rooms, equipment rooms, and building entrances but also



Structured Wiring Installation: Everything You Need To

Also known as the cable backbone, this subsystem carries aggregated traffic between telecommunications rooms, equipment rooms, and entrance

The FOA Reference For Fiber Optics

The Role of Fiber Optics In Premises Networks
While UTP copper has dominated premises cabling, fiber optics has become increasingly popular as computer



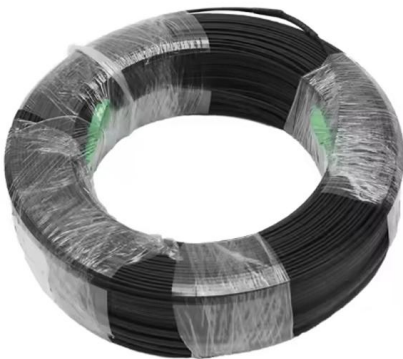
Cable routing , Tips for proper cabling , Simply explained

In this guide, you can find out about appropriate practices and installation tips for cable management and everything else you need to know about cable management. Firstly, we will focus on the different



The FOA Reference For Fiber Optics

The main cross-connect (MXC) or equipment room contains the network and telco hardware. For traditional POTS (plain old telephone service) telephones, their



Cable routing in computer centres , OBO

Reliable cable routing in the data centre Depending on the purpose, both cable trays, mesh cable trays and cable ladders can be used in computer centres, in order to

7 Components of Structured Cabling

Best practices include maintaining proper clearance, securing power redundancy, and implementing effective cable routing to minimize crosstalk and



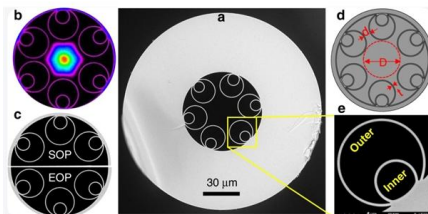
Cable management guidelines

Bind and route the cables neatly inside the rack, and make sure they are not kinked or bent. Figure 104: Correct and incorrect cable binding The cable bend radius at connectors must be a minimum of 5



Structured Cabling Installation: The Complete Guide (2025)

In this guide, we'll break down everything you need to know about structured cabling - from its definition to the installation process.



Ultimate Guide to Cable Management for a Clean Desk Setup in Your Home

Tired of messy wires? Learn how to manage cables under your desk with this ultimate guide. Create a clutter-free home office

How do I feed an ethernet cable through a doorway

How can I feed a connecting internet cable from the router in my office to the adjoining room so that my wife can have an Ethernet cable connection, while





Cable Routing

Basic Rules Lay out and bind cables of different types (such as power and signal cables) separately. Cables of the same type must be in the same direction. Route cables near each other in crossover

Underfloor cable systems explained in details

Under Floor Cable Runs Tee (source: Wikipedia)
This method of construction is referred to as 'suspended flooring' or 'computer flooring'. Whereas this was traditionally confined to



A Full Guide To Structured Cabling in Data Centers

Structured cabling is a standardized method for organizing and managing network cables in a data center. It connects servers, switches, and

The step-by-step guide for perfect PC cable management

PC cable management is an important part of the PC building process. Here's a step-by-step PC cable management guide to help you get started.





Length:14.5mm
Small-end inner diameter:2.0mm
Large-end inner diameter:3.5mm
Outer diameter:5.2mm



Cable management and labeling

The necessity for detailed cable management and labeling is due to the complexity of today's configurations, potential distances between solution components and the increased number

What Is a Crossover Cable?

What Is a Crossover Cable? An ordinary patch cable connects different types of devices, for example, a computer and a network switch. A



Cable Routing 101: Standards and Best Practices for PC

Learn how to follow the cable routing standards and best practices for different PC cases. Improve your PC's appearance, airflow, cooling, and performance.

Contact Us

For datasheets, pricing, or custom telecom energy solutions, please visit:
<https://www.koskolong.co.za>