



**Adam Tas Corridor Energy**

# **Cable tray and hanger span**





## Overview

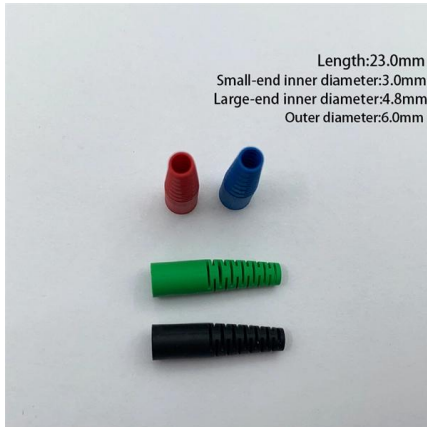
---

When the bridge span cable tray is installed indoors, the short span of the bridge support hanger is generally 1. The mechanical and electrical characteristics, tests, certifications, overall quality management, recommendations mentioned in this technical guide only apply to our own cable management ranges and cannot under any circumstances be transposed to silicone, overheating or. Cable tray (or cable ladder) systems are a popular alternative to electrical conduit systems, as they have an outstanding record for dependable service, design flexibility and cost savings in commercial and industrial applications. OBO BETTERMANN has offered products and solutions for electrical installation for over 100 years.



## Cable tray and hanger span

---

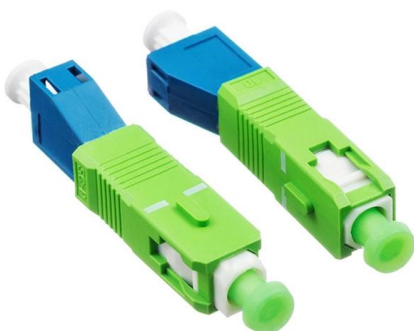


### Load over Span Considerations

In the case of electrical products such as cable tray or ladder (which are load rated in kilograms per metre), the span is the distance between support points, separate

### GUIDE CABLE TRAYS TECHNICAL

NEMA VE 1-2017 Specifies requirements for metal cable trays and associated fittings designed for use in accordance with the rules of Canadian Electrical Code, Part I and the National Electrical Code®



### Cable Support Distances

This provides distances for cables based on their diameter and cable type. Prysmian was instrumental in providing this information and an extract is provided in this document.

### Cable Tray Technical Guide A practical guide to product selection and

Cable Tray Technical Guide A practical guide to



product selection and installation This guide for engineers and installers has been developed by ABB as a practical reference regarding cable tray



### Guide to cable support systems

The systems allow large support spacings of wide span systems or the multilayer arrangement of cable trays and cable ladder systems. The systems comprise I hanging supports, support brackets, head

### How Far Can Cable Tray Support Span?

If you've ever wondered how far cable trays can span and what makes them a crucial component, you're in the right place. In this article, we'll



### Cable Tray Spacing Standards for Installation and Safety

The Importance of Cable Tray Spacing in Electrical Infrastructure Cable tray spacing is a critical aspect of electrical infrastructure, influencing both



## A Guide to Installing and Supporting Electrical Cable Trays

A professional guide to installing electrical cable tray systems per NEC Article 392. Covers support, securing cables, and fill calculations.



## Cable Tray Accessories, Cable Tray Hangers & Support , RS

Cable trays are components used in the wiring of buildings to support insulated cables and organise them to be hidden from view. They offer an alternative to open wiring or electrical conduit systems



## TECHNICAL AND SIZING DATA

Span loads are conservatively estimated to be 50% at each end support and 125% at each intermediate support for multiple span continuous ladder trays, uniformly loaded, with equal spans and loads, at a

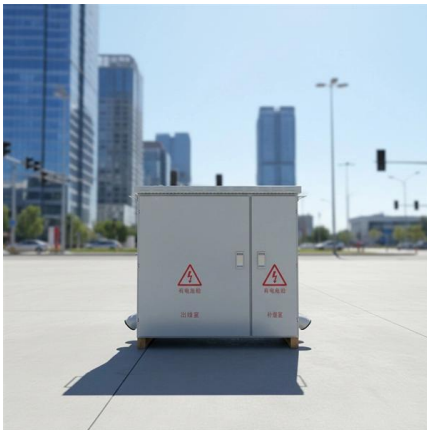
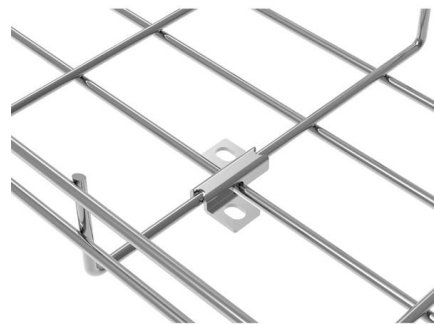
## Chapter 14 Cable Support systems

For three-phase, single conductor cables, these forces cause violent thrashing of the individual conductors, frequently resulting in inadequately supported cables jumping out of their cable tray or



## B-Line series Cable Tray Design Considerations

Our wind certification report provides you with list of acceptable B-Line series cable tray supports, fittings and covers based off of the environmental conditions, cable loading, and type of cable tray in your



## CABLE TRAY SYSTEMS GUIDE

Commonly called the Load Class, this defines the load-carrying capability of the tray for a specific support span distance. The design and cost of the cable tray is greatly affected by this designation.

## Best Practice Guide to Cable Ladder and Cable Tray Systems

This guide covers cable ladder systems, cable tray systems, channel support systems and associated supports intended for the support and accommodation of cables and possibly other electrical





## Keine Ergebnisse für ecuadorian multi span cable tray hangers

Weitere Ergebnisse sind möglicherweise in Englisch für ecuadorian multi span cable tray hangers auf Machinio verfügbar

## Best Practice Guide to Cable Ladder and Cable Tray Systems

This publication is intended as a practical guide for the proper and safe\* installation of cable ladder systems, cable tray systems, channel support systems and associated supports.

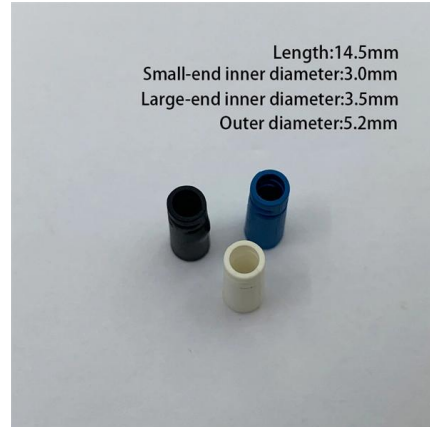


## Guide to cable support systems

The systems are suspended from the ceiling with threaded rods, stand-off brackets allow raised floor mounting of cable trays, ladders and mesh cable trays. The universal systems comprise ceiling

## Cable Support Distances

Cable Support Distances Although BS 7671 touches on the subject of cable supports, it does not detail specifically what these support distances should be. Section 522.8 (Other Mechanical Stresses (A))



## TECHNICAL AND SIZING DATA

The optimum span, which varies according to the tray type, the type of support method and labour rates (field vs. shop) can be determined by doing estimates of cost installed for a few trial spans.



## Cable Tray Support Spacing: Key Guidelines Explained

Explore the essential cable tray support spacing requirements for safe and efficient installations. Learn NEC guidelines for perforated, ladder, and wire



## HANGERS & BRACKETS Lengths Cable Ladder

QQ QQ Maximum QQ 300mm, the tray overhead hangers are suitable for use with all types of Vantrunk cable tray. The loading table below gives the recommended maximum load for each size of tray





## TECHNICAL GUIDE

This standard defines configurations for the mechanical tests to be performed on cable trays, brackets, hangers and other accessories. It also specifies the requirements and methods for the electrical



### Safe Working Load (SWL)

3. CM150 Wire Cable Tray SWL Considering safety and costs, the wire cable trays are suggested to be supported at a span of 2.0m by trapeze, wall, floor or channel mounting methods. Make the first span

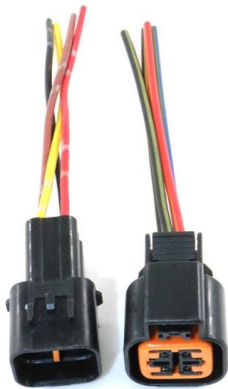
### Cable Tray Spacing Standards for Installation and Safety

Discover the essential cable tray spacing requirements for safe and efficient installation. Learn key standards, horizontal and vertical spacing, and more.



### What are the specifications and standards for cable tray brackets and

When the bridge span cable tray is installed indoors, the short span of the bridge support hanger is generally 1.5m~2m, and the long span can be 3m, 4m or 6m. When the cable bridge is installed



## Contact Us

---

For datasheets, pricing, or custom telecom energy solutions, please visit:  
<https://www.koskolong.co.za>