



**Adam Tas Corridor Energy**

# **Cable tray connection to main cable tray**





## Overview

---

The main cable tray connection methods include splice plates, bolted connections, quick connect systems, fish plates, clamps, and welding. maintain spacing or to keep cables in place when the tray is ect the minimum bend ra-dius for cables as they exit the bottom of the cable tray. A rung spacing of 6 to 9 inches (150 to 230 mm) is preferable when the cable tray cont d for instrumentation and control applications that require. The mechanical and electrical characteristics, tests, certifications, overall quality management, recommendations mentioned in this technical guide only apply to our own cable management ranges and cannot under any circumstances be transposed to si osure, overheating or. In accordance with National Electrical Code (NEC) Article 392 "Cable trays" first determine the Maximum Fuse Ampere Rating or Circuit Breaker Ampere Trip Setting or Circuit Breaker Protective Relay Ampere Trip Setting for Ground-Fault Protection s the minimum.



## Cable tray connection to main cable tray

---



### Cable Tray Installation and Cable Handling Method

Cables must be installed in the designated cable trays as specified in the contract drawings. Install cables neatly and professionally, adhering to the provided

### Cable Tray Systems: A Complete Guide to Types

Discover the essential guide to cable tray systems. Learn about ladder, trough, and wire mesh types, key components, and expert installation tips



### Cable Trays , Cable Management Systems , Snake Tray

Snake Tray manufactures cable trays, power distribution solutions and cost-effective cable management systems for data centers, solar installations, transit & more.

### Complete cable tray manual for electrical engineers and

Complete cable tray manual for electrical engineers and designers (on photo: power cable



management ladder tray systems assembled  
aluminum cable tray ladder



### **Cablofil COTJGS Pre-Galvanised Steel Cable Tray Divider Connector**

Pre-galvanised steel divider connector for mounting separation plates to cable trays. Designed specifically for cable trays and uses screw fixing for stable, vibration-resistant installation in cable



### **CABLE TRAYS CONNECTION INSTRUCTIONS**

Introduction The purpose of this document is to describe the correct process to install the connectors in our cable trays.



### **Cable Tray Technical Guide A practical guide to product selection and**

Cable Tray Technical Guide A practical guide to product selection and installation This guide for engineers and installers has been developed by ABB as a practical reference regarding cable tray





## Technical Guidelines for Cable Tray Installation and

Cable tray installation must comply with specific technical standards to ensure electrical safety, system reliability, and long-term maintainability. This document



SC connector  X 12

## How to install Cable Trays - Best Guide in 2026

Step-by-step on-site guide: learn how to plan, mark, support, and install cable trays correctly, from shop drawing approval to final checks.

## Cable Tray And Fittings , Graybar Store

A cable tray system is used to support insulated electrical cables used for power distribution, control, and communication. Cable trays are used as an alternative to open wiring or electrical conduit



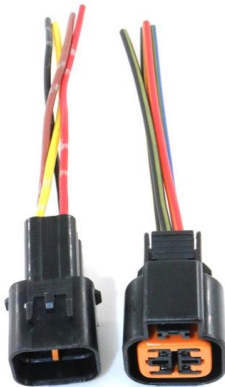
## How to Install Cable Tray: A Comprehensive Guide to Different Cable

Welcome to our step-by-step guide on installing cable trays! In this video, we'll explore the different types of cable trays available and provide detailed instructions for their installation.



### **Cablofil CE40 Zinc Magnesium Cable Tray Hold Down Clamp Plate**

Cablofil CE40 hold down clamp plate provides secure retention of cable trays within cable support systems, ensuring stable fixing to wire mesh tray geometry. Two clamp plates are used per



### **Cablofil Hot Dip Galvanised Steel Wire Cable Tray Support Rail 1m**

Hot dip galvanised steel S-profile support rail for wire cable tray mounting. Back perforated for flexible and secure fixing, delivering corrosion resistance and 1 kN load capacity for industrial use.

### **Cable Tray Design, Layout, and Overall Wiring Planning**

Learn about effective Cable Tray Design and Layout for electrical systems. Our guide covers planning, material choice, safety,



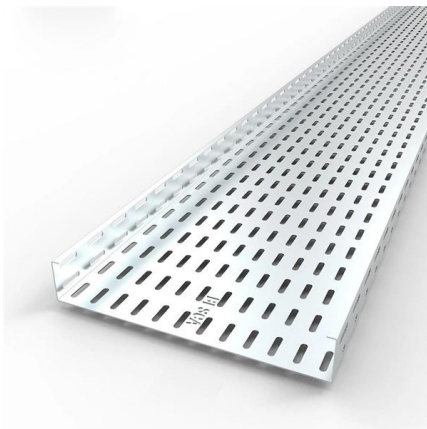


## Mastering Cable Tray Installation , Step-by-Step Guide for a Seamless

Mastering cable tray installation is crucial for creating a safe, organised, and efficient cable management system. By following this step-by-step guide, you can ensure a seamless setup that

### Cable Tray Installation

Whether you're building a commercial setup or upgrading an industrial plant, proper cable tray installation ensures neat wiring, safe access, and easy maintenance. But before you lay the first tray

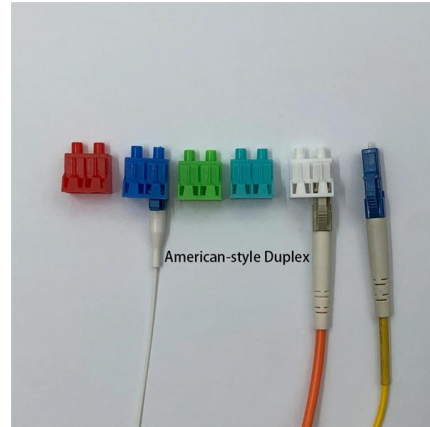


### EAE Electric , Busbar Energy Distribution Systems

Since 1973, EAE Electric has been your reliable partner in busbar, cable trays, fit-out solutions, support systems and much more!

### Cablofil PA4 Electro-Zinc Steel Wire Cable Tray 105mm Radius Support

Radius support connector for wire cable trays. Forms secure horizontal hinged joints for 100 to 600 mm tray widths. Electro-zinc plated steel delivers corrosion resistance and durable performance in cable



### **Cablofil FASLOCKSDC Hot Dip Galvanised Steel Wire Cable Tray**

Hot dip galvanised steel small bend connector for rapid joining of wire mesh cable trays. Horizontal hinged joint supports flexible routing for 100-200 mm trays, providing corrosion resistant, halogen



### **Connecting Cable Trays: Your Guide to Secure and**

Learn common methods for connecting cable trays safely and efficiently. Our guide covers splice plates, quick-connects, and key tips for secure



### **Cable tray manual**

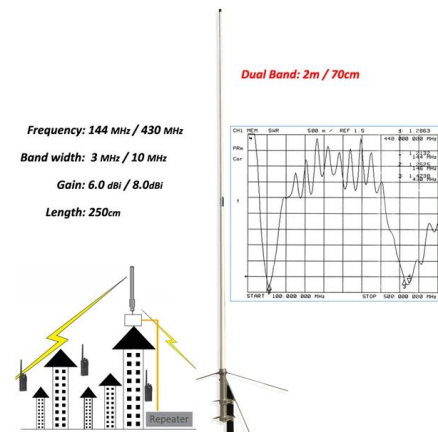
Instead of large conduits, cable channel may be used very effectively to support cable drops from the cable tray run to the equipment or device being serviced and is ideal for cable tray runs involving a





## Cable Tray Installation

Learn everything about cable tray installation with our complete guide. Discover types, steps, and safety tips for efficient electrical cable management.



## Cablofil Electro-Zinc Steel Cable Tray Radius Support 150mm

Electro-zinc steel radius support for wire mesh cable trays, enabling horizontal hinged direction changes. Compatible with 100-600 mm trays with 50 mm side height for controlled cable routing.

## Cable Tray Technical Guide A practical guide to product selection and

A practical guide to product selection and installation This guide for engineers and installers has been developed by ABB as a practical reference regarding cable tray characteristics, installation, and



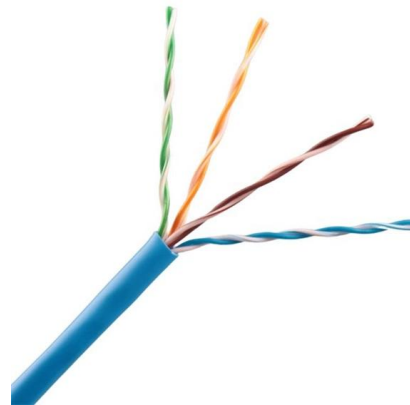
## A Guide to Installing and Supporting Electrical Cable Trays

This guide covers the critical steps, from selecting the right electrical cable tray and performing accurate cable fill calculations to managing a safe cable pull through



## EzyStrut , Cable & Pipe Supports

Innovative Products Download our Quick Order Guide and start browsing more than 2,500 innovative cable and pipe support products. Mesh Cable Supports EM2+



## GUIDE CABLE TRAYS TECHNICAL

The cable management system's electromagnetic performance characterises its ability to protect its cables from external electromagnetic disturbance; if this is controlled, the data carried by the cables

## Contact Us

---

For datasheets, pricing, or custom telecom energy solutions, please visit:  
<https://www.koskolong.co.za>