



Adam Tas Corridor Energy

Cable tray crossarm fabrication





Overview

Galvanized crossarms for cable trays are typically made of Q235 low-carbon steel via rolling. Cable tray making machines are used to manufacture cable trays – an important component in electrical installations and industrial buildings for routing cables and wires safely. Wide range standard cable management products & bespoke CMS solutions designed and manufactured in house. Combining local manufacture and distribution with an extensive product range, these facilities ensure we.



Cable tray crossarm fabrication



How to Produce Cable Trays: A Comprehensive Guide

Discover the detailed process on how to produce cable trays, covering everything from material selection to assembly and surface treatment.

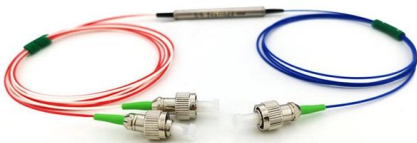
Crossarms , Hubbell Power Systems

Support power lines and other pole-mounted assets with strong and durable crossarms from Hubbell. Available in fiberglass or apitong wood, our high-strength crossarms are built to last. Resist fire, rot,



Cable Tray Fabrication Method Statement

The document outlines procedures for cable tray fabrication and installation for the HA MBD project. It includes sections on scope of work, reference documents,



Cable Tray Crossarm Roll Forming Machine

See our Cable Tray Crossarm Roll Forming Machine as seen by our client in Tajikistan. This



video showcases the machine's robust performance and the quality of the final product in a



Perforated, GI, MS & Ladder Type Cable Trays

Explore a wide range of industrial cable trays, including ladder type, perforated, and powder-coated options. Heavy-duty designs for power plants and factories.



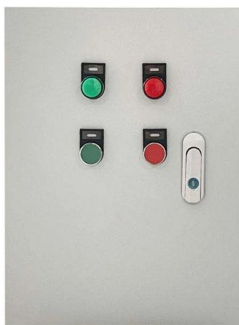
Cable Tray Technical Guide A practical guide to product selection and

Cable Tray Technical Guide A practical guide to product selection and installation This guide for engineers and installers has been developed by ABB as a practical reference regarding cable tray



Armorduct Systems Ltd , Manufacturing Cable

Armorduct Systems are a UK manufacturer of steel cable management systems including cable trunking, tray, basket, floor boxes, power track & more. Wide





Fabrication and Cable Tray System

We shop fabricate steel plates, cable tray and ladders, culverts and heat shields, pre-assembled piping and tank structures, supplying them directly to your site for



cable tray system

Straight sections of solid bottom cable trays constructed from single sheet of metal, providing excellent protection from external damage. They are used primarily for intrumental control,

Crossarms

From impact-resistant end caps to patented internal bushings, Our Crossarms are built to last. Available in the braced, center mount, and alley arm applications, our Crossarms are sure to have products to



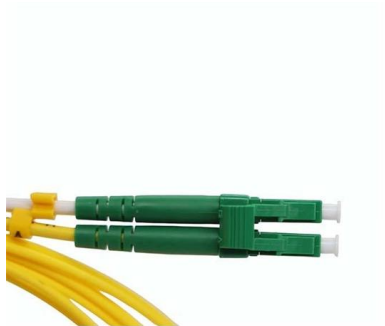
Cable tray

ABB designs and manufactures cable tray systems, including perforated tray, cable ladder, channel tray and strut (metal framing).



Best practice guide to cable ladder and cable tray

Cable ladder and cable tray systems The following recommendations are intended to be a practical guide to ensure the safe and proper installation of



Distribution Crossarms

We have produced a large range of electrical crossarms and fittings for utilities companies around the world; with over 200 designs currently deployed and an

Guide to cable support systems

A cable support system consists of cable support lengths and system components, such as cable support fittings, support elements, mounting elements and system accessories. The cable support





Method Statement installation of Cable Trays and Ladders

This method statement covers the site installation of the cable tray & ladders and the requirements of checks to be carried out.

Fabrication and Cable Tray System

Fabrication & Cable Tray System Fabrication & Cable Tray System Supermec offers specialised fabrication solutions to meet your project needs. Thanks to many

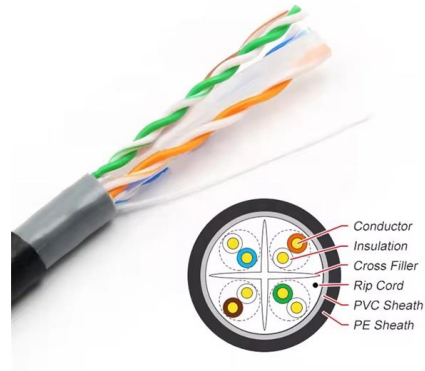


The Ultimate Guide to Electrical Cross Arms for Power

Explore the world of electrical cross arms in this comprehensive guide covering types, materials, and applications. Learn how to choose the right cross arm

Comprehensive Guide to Electrical Cross Arms: Types,

Explore the world of electrical cross arms with our comprehensive guide. Discover various types, materials, and applications to optimize power line



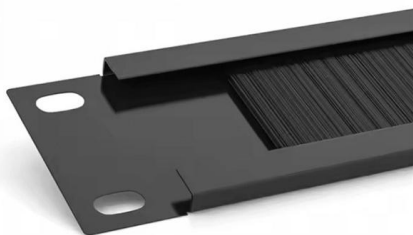
Types Of Crossarms In Power Fittings And Detailed

Features of distribution line hardware crossarm
4. overhead line connectors assembled crossarm
Assembled crossarms include ground wire



Cable tray

ABB designs and manufactures cable tray systems, including perforated tray, cable ladder, channel tray and strut (metal framing), directly from production facilities in



Steel Cross Arm, Cross Arms in Transmission Line and

Cross arms supplier offers 11KV/33KV overhead line cross arm and customized steel cross arm, which is Hot-dip galvanized according to ISO1461.



Horizontal Cross Cable Tray

Versatile Design for Cable Management The Horizontal Cross junction provides effective four-way branching for cable tray support systems, accommodating complex wiring layouts in industrial and



Cable Tray Installation Method Statement

The document provides guidelines for installing cable trays and accessories. It outlines 15 steps for the installation process including preparing cable tray

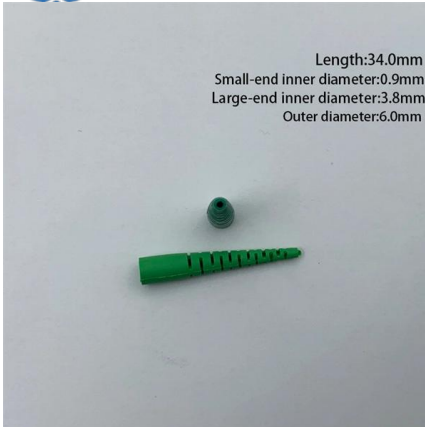
Beama Best Practice Guide , Installation Of The System , Cable

The following recommendations are intended to be a practical guide to ensure the safe and proper installation of cable ladder and cable tray systems and channel support and other support systems.



What is Cable Tray and How it is used in Industrial

What is Cable Tray? In electrical cabling, a cable tray is a metallic structure used to handle insulated electrical power distribution, control, and



Cable Tray Making Machine

A cable tray making machine, also known as a cable tray roll former, is an automated machine that forms metal coil strips into cable tray sections through a series of progressive dies and



Cable Tray Installation Method Statement

Below is the detailed cable tray installation method statement not only for cable tray but also applicable for GI ladder and trunking for indoor and outdoor applications

Technical Specification for Cable tray installation and cable laying work

1. Scope :- This specification covers the following major activities; - Fabrication and installation of Mild Steel (MS) support structure for Galvanized Iron (GI) Cable tray. - Installation of perforated GI Cable



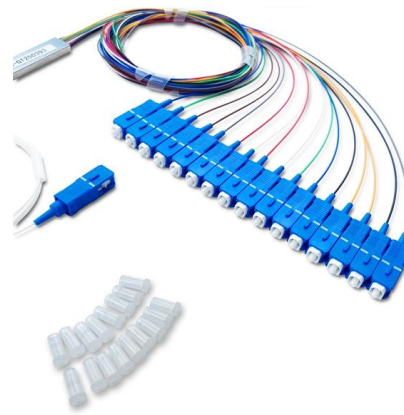


Galvanized Crossarms for Cable Trays: Analysis of Functions,

Galvanized crossarms for cable trays are typically made of Q235 low-carbon steel via rolling. Their cross-sectional forms are mostly U-shaped or L-shaped, and their thickness is classified

Cable Tray Installation Accessories

Explore essential cable tray installation accessories for secure, stable, and safe cable management systems: hoisting frames, cross arms, wall



How to Install Cable Tray: A Comprehensive Guide to Different Cable

Welcome to our step-by-step guide on installing cable trays! In this video, we'll explore the different types of cable trays available and provide detailed instructions for their installation.

Contact Us

For datasheets, pricing, or custom telecom energy solutions, please visit:
<https://www.koskolong.co.za>