



**Adam Tas Corridor Energy**

# **Cable tray final exit**





## Overview

---

Exit Plates used to safely support cables over the side rail or ends of cable trays and OE cable ladders. Cable tray (or cable ladder) systems are a popular alternative to electrical conduit systems, as they have an outstanding record for dependable service, design flexibility and cost savings in commercial and industrial applications. The mechanical and electrical characteristics, tests, certifications, overall quality management, recommendations mentioned in this technical guide only apply to our own cable management ranges and cannot under any circumstances be transposed to silicone, overheating or. The final drawings for a cable tray wiring system may be completed and sent out for bid or construction more quickly than for a conduit wiring system.



## Cable tray final exit

---



### Tripp Lite SRWBDRP Cable Exit Clip/Dropout Waterfall for Wire

Metal cable dropout maintains a proper bend radius for copper cables that are routed down through the wire mesh cable tray in your data center. Maintains a bend radius while dropping cables through the

## Best Practice Guide to Cable Ladder and Cable Tray Systems

This guide covers cable ladder systems, cable tray systems, channel support systems and associated supports intended for the support and accommodation of cables and possibly other electrical



## CABLE TRAYS CONNECTION INSTRUCTIONS

It is possible to use cable trays as grounding conductor equipment. In accordance with National Electrical Code (NEC) Article 392 "Cable trays" first determine the Maximum Fuse Ampere Rating or

## B-Line series Cable Tray Design Considerations

Is your cable tray system optimized for safety, dependability, space and cost savings? Cable



tray (or cable ladder) systems are a popular alternative to electrical conduit systems, as they have an



### Exit plate SPB/OE

Can be used on the end of cable trays or on the side rails at any position. Exit Plates used to safely support cables over the side rail or ends of cable trays and OE

### Method Statement For Cable Pulling and Final Electrical

This procedure covers the method for all the cable pulling, electrical connections and terminations for cables running on cable ladders and cable trays. Electrical



### Cable Tray Technical Guide A practical guide to product selection and

Cable Tray Technical Guide A practical guide to product selection and installation This guide for engineers and installers has been developed by ABB as a practical reference regarding cable tray



## Cable tray

Several types of tray are used in different applications. A solid-bottom tray provides the maximum protection to cables, but requires cutting the tray or using fittings to

Various specifications optional



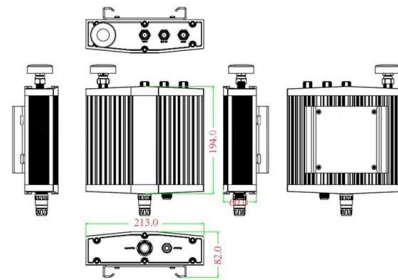
## 2005

Small diameter cables may exit the ventilated trough cable tray through the bottom ventilation holes as well as out the top of the cable tray. For installations where the cables exit the bottom of the cable

### Solved: Describe how cables are placed in the tray. Discuss the

Describe how cables are placed in the tray. Discuss the various ways in which cable can exit a cable tray. Explain why some of these methods of cable exit may not be allowed.

Mechanical drawing



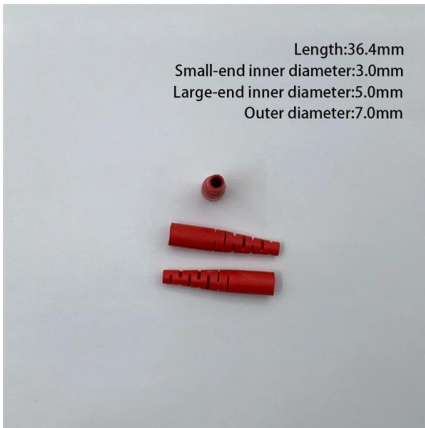
## Best Practices for Cable Tray Design

Cable tray design is an essential practice in electrical infrastructure and network projects. It ensures the organization, safety, and efficiency of the system,



## GUIDE CABLE TRAYS TECHNICAL

NEMA VE 1-2017 Specifies requirements for metal cable trays and associated fittings designed for use in accordance with the rules of Canadian Electrical Code, Part I and the National Electrical Code®



## Cable exit plate , OBO

Accessories, mesh cable trays - Cable exit plate.  
Hotline: +49 (0)2373 89-1700 Faxnumber: +49 (0)2373 89-1238 E-mail: export @obo Opening hours: Mon.-Thur.: 7.30

## Complete cable tray manual for electrical engineers and

The final drawings for a cable tray wiring system may be completed



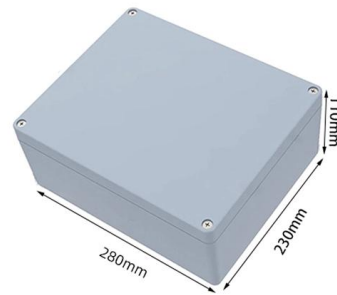


## Cable Tray Technical Guide A practical guide to product selection and

Cable tray installed in a hazardous location must contain only those cables that are appropriate for this type of environment as defined in Chapter 5 of the NEC.

### Waterfall Exit Fittings

TechLine manufactures waterfall exit fittings to enhance ease of use for our cable tray systems as mount directly to existing tray without alterations!



### Cablofil 941299 CABLEXIT100 Cable Exit

Cablofil 941299 Description Cablofil Cable Exit, Series: CABLEXIT100, 0.06 in L x 1.772 in W x 6.7 in H, 1008 Carbon Steel, For Use With: Wire Mesh Cable Tray, Black Painted 941299 Application Cable

### B-Line series Cable Tray Design Considerations

For installations where cables exit the bottom of the cable tray, and the overall system is subject to vibration, it is advisable to use B-Line series Cable Channel Bushings (Cat. No. 99-1125).



### Cable Tray Blind End Plate

Snap Track End of Tray Exit drop outs are designed to allow cables to freely spill out of the end of the tray while providing the proper bend radius protection.



### What Is A Cable Tray Layout And Section , Hutaib Electricals

Hutaib Electricals is a leading cable tray manufacturer in Pune, offering top-quality, durable, and cost-effective cable management solutions for industrial and commercial needs.



### Cable Tray Type Selection

Cable Tray Type Selection What type of cable tray should be used for the main runs of a cable tray wiring system? The cable tray types to choose from are ladder, ventilated trough, or solid bottom.





## CABLE TRAY SYSTEMS GUIDE

Hubbell's NEXTFRAME® Ladder Tray is the effective and widely used cable runway that supports and delivers bundles of cable between cabinets, racks, and closets, along walls, and suspended from



## Cable Pulling and Termination Method Statement

The process involves isolating power, inspecting materials and tools, pulling cables through trays and ladders while maintaining bending radii, securely fastening

## Annex I

This document deals with cables trays, cables and connector installation and segregation, cable trays earthing and E.M.C. directives. These rules shall be applied in the cabling engineering workflow for



## Contact Us

---

For datasheets, pricing, or custom telecom energy solutions, please visit:  
<https://www.koskolong.co.za>