



**Adam Tas Corridor Energy**

# **Cable tray funnel tilt**





## Cable tray funnel tilt

---



### **B-Line series Cable Tray Design Considerations**

Available in 3, 4, and 6-inch widths with ventilated or solid bottoms, channel cable tray is ideal for smaller instrumentation cables and cable tray runs involving a small number of cables.

### **Best Practices for Installing Cables in Trays**

Learn the best practices for installing cables in trays. This guide covers essential steps, technical requirements, and key details for efficient cable



### **Complete cable tray manual for electrical engineers and**

Complete cable tray manual for electrical engineers and designers (on photo: power cable management ladder tray systems assembled aluminum cable tray ladder



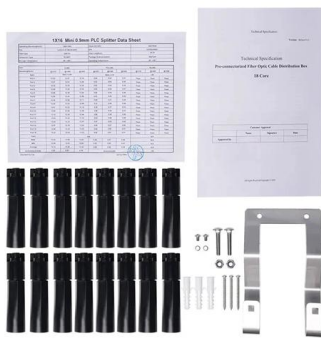
### **Fixed Tilt Arrays**

Discover Snake Tray Utility-Grade Solar Snake Tray for fixed-tilt ground-mounted solar arrays -- durable cable tray systems built for robust PV



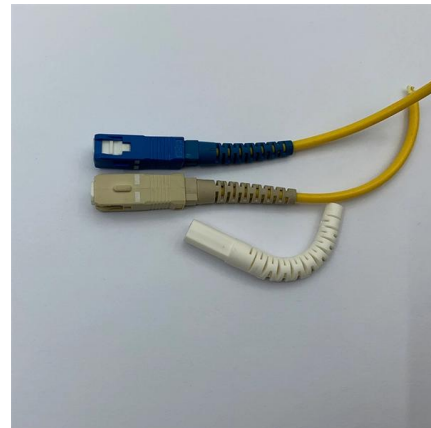
### Types of Cable Trays - Purpose, Advantages,

Cable tray is alternatives to wire ways and electrical conduits, which completely enclose cables. Study types of cable trays, purpose, advantages.



### Tilt-Up Construction for Hotels: How Snake Tray is

Tilt-Up Construction with Snake Tray's 701 Series MC Cable Management System, speeds up hotel builds with efficiency and cost-effectiveness



### CABLE TRAY SYSTEMS GUIDE

Some applications may require the cable tray to support the weight of a single, dead object in addition to the cable loads. Specifications typically require this to be applied at the midpoint of the span between





## Types of Cable Trays: Ladder, Perforated, Basket, Solid

Explore all types of cable trays--ladder, perforated, basket, solid, and channel. Learn their uses, materials, pros, cons, and key differences.

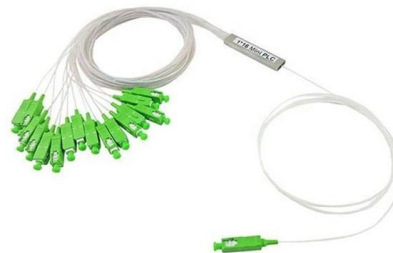


### cable tray system

All cable trays are manufactured in accordance with the NEMA standard publication VE 1-3.02 1979, TITLED "Cable Tray Systems". Thus they meet and/or exceed the loading capability of

### Cable tray systems support cables' journey through the data center

In many cases, a data center contains a significant number of cables to accommodate the network's high-volume, high-density connections. That being the case, we asked providers of cable tray



### Testrite Instrument Co., Inc. , Cable Waterfalls

When you need custom waterfalls for datacom cable management--whether for fiber optics, Cat 5e, Cat 6, Cat 6A, or Cat 7--Testrite OEM designs and manufactures wire management solutions in



## Cable Tray Design and Components Guide

This document provides information about cable trays and accessories, including straight cable trays, perforated trays, returned edge and flange types, and bent

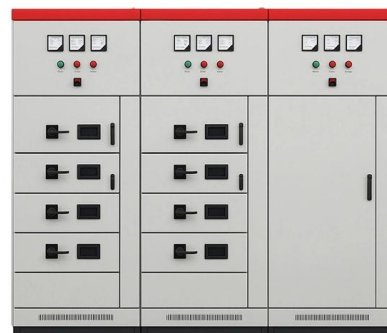


## Tilted cable trays

Dear Forumusers, I'm modelling existing cable trays and they are tilted under different angles. I can only draw them horizontal and can't pick a

## Cable Trays

A cable tray bend is a connecting element used at points where the cable tray changes direction. It ensures that the cable trays smoothly change face at





## The Complete Guide to Cable Trays , Snake Tray

Learn about the benefits and applications of cable trays, and the specific advantages of using Snake Tray products.

### GENERAL INFORMATION

Cable trays or raceways often provide a convenient, safe and efficient method of fiber optic cable installation. Trays can be installed in ceilings, below floors and in riser shafts. When installing fiber



### how to install cable tray systems ? , What is the difference between

What is the difference between cable ladders and cable trays? Cable tray use for easier to lay new cables onto a tray system as the needs of a project change over time. ladder tray, cable runway

### Cable Management Systems Explained for Your Needs

Explore the best cable management systems for safe, scalable cable routing -- including trays, ladders, trunking, and more.



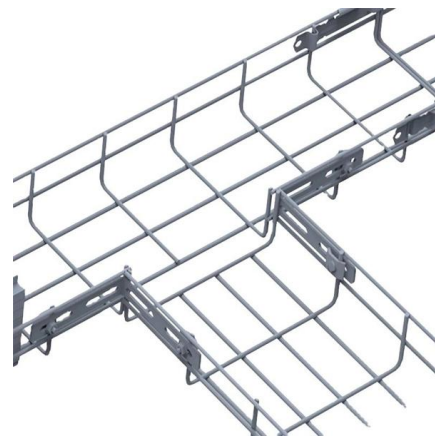


## Tilttable cable tray

This tilttable cable tray hides cables and wires but also helps you keep them organised. Comparing it with the metal cable tray this cable tray offers a lot more

## Cable Tray Technical Guide A practical guide to product selection and

Cable tray is considered to be a system. It must provide continuous support for cables, and the electrical continuity of the cable tray system must be maintained.



## Cable Management Systems

Snake Tray offers innovative cable management systems that are easy to install and affordable, for industries including data centers, transit, solar installations and more.

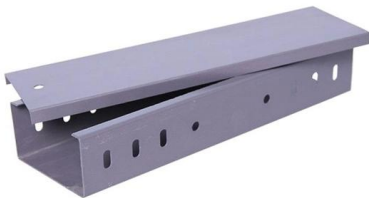
## Guide to cable support systems

Widths of 8 and 15 millimetres enable flexible adjustment to different cable trays, cable ladders and cable volumes. With the help of the matching SBV tightening strap locks and 576 spring chuck, the



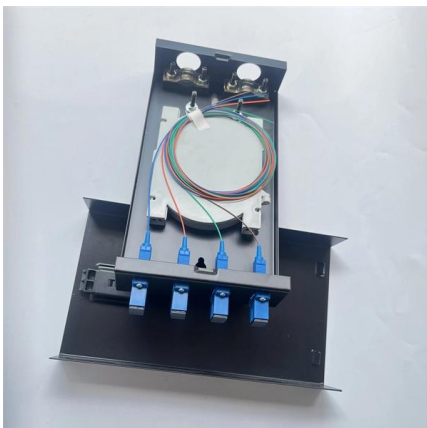
## Annex I

This document deals with cables trays, cables and connector installation and segregation, cable trays earthing and E.M.C. directives. These rules shall be applied in the cabling engineering workflow for



## CABLE TRAY INSTITUTE

The Cable Tray Institute (CTI) was founded in 1991 to support the cable tray industry by engaging in research, development, education, and the dissemination of



## 7 Types of Cable Trays: How to Choose the Right One

Cable tray systems are engineered support structures designed to route, support, and protect insulated electrical cables used for power distribution,



## **Katimex® Cable Guiding Equipment**

For this kind of cable laying technique, KATIMEX® offers a robust and effective solution to guide cables through cable ducts from different manufacturers. The cable tray rollers from Katimex are specifically



## **Contact Us**

---

For datasheets, pricing, or custom telecom energy solutions, please visit:  
<https://www.koskolong.co.za>