



Adam Tas Corridor Energy

Cable tray laying construction on the ground





Cable tray laying construction on the ground



Cable Tray Installation

Whether you're building a commercial setup or upgrading an industrial plant, proper cable tray installation ensures neat wiring, safe access, and easy maintenance. But before you lay the first tray

How to lay ground cable trays?

The laying of ground cable trays is a professional electrical engineering task that mainly involves the following steps and requirements: 1. Design and preparation: Firstly, it is necessary to



Cable Tray SHIB NAL

Where a cable tray includes only multiconductor cables, there is generally no need to use the tray as an equipment grounding conductor because each multiconductor cable should have integral equipment



Underground Cable Laying All You Need to Know

What is underground cable laying? In areas where space for cables is limited and crunched,



especially the urban regions, underground laying of



Method Statement for Cable Tray Installation

a) Issued for construction drawing and lay-out will be made readily available for reference on the installation of cable tray system. b) Cable trays are used for the support of single conductor

Equipment Grounding Conductors for Cable Tray Systems

Cable tray wiring systems have excellent safety and dependability records. These excellent records are the result of cable tray's unique features plus the proper



Cable Tray Grounding Wire: What You Need to Know

Cable tray grounding wire is the safety connection that links your electrical system's cable tray to the ground. This provides a safe path for any





Cable Tray Installation Rules (NEC 392) - Electrical Trader

Core rules for selecting, installing, grounding, and filling cable trays--clearances, materials, separation, and bonding explained.



Practices for grounding and bonding of cable trays

A bare copper equipment grounding conductor should not be placed in an aluminum cable tray due to the potential for electrolytic corrosion of the aluminum cable tray in a moist environment. For such

Cable Tray Trunking & Ladder Installation Method for

Resources For Electrical & Electronic Engineers
Cable Tray Trunking & Ladder Installation Method for Projects The purpose of this article is to define the



Best Practice Guide to Cable Ladder and Cable Tray Systems

This guide covers cable ladder systems, cable tray systems, channel support systems and associated supports intended for the support and accommodation of cables and possibly other electrical



Method Statement installation of Cable Trays and Ladders

This method statement covers the site installation of the cable tray & ladders and the requirements of checks to be carried out.



Practices for grounding and bonding of cable trays

Cable tray may be used as the Equipment Grounding Conductor (EGC) in any installation where qualified persons will service the installed cable tray system. There is no restriction as to where the

Method Statement for Installation of Cable Tray or Trunking

On completion of cable tray/ ladder installation including fittings, inspect exposed finish. Remove burrs & construction debris and repair damages finishes





Understanding Cable Tray Grounding: A

Cable tray grounding is an indispensable aspect of electrical installations that plays a pivotal role in ensuring safety, reliability, and efficiency. It

A Guide to Installing and Supporting Electrical Cable Trays

A professional guide to installing electrical cable tray systems per NEC Article 392. Covers support, securing cables, and fill calculations.

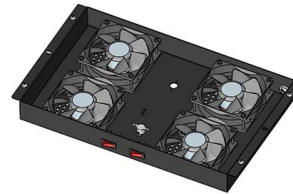


Cable Tray Technical Guide A practical guide to product selection and

Cable Tray Technical Guide A practical guide to product selection and installation This guide for engineers and installers has been developed by ABB as a practical reference regarding cable tray

Understanding Cable Pathways, Cable Conduits, Cable

Cable trays and cable ladders are both support systems used in industrial and construction settings to manage electrical and data cables. Cable trays are flat,



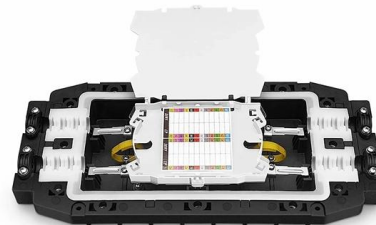
Best Practice Guide to Cable Ladder and Cable Tray Systems

This publication is intended as a practical guide for the proper and safe* installation of cable ladder systems, cable tray systems, channel support systems and associated supports.



Cable Tray Installation Method Statement

Below is the detailed cable tray installation method statement not only for cable tray but also applicable for GI ladder and trunking for indoor and outdoor applications



Cable Tray Installation Method Statement

Ensure the gaps between the trays which are mounted in tiers are sufficient for the cable laying as per the approved installation details drawings. Cable Ladder and



Cable Tray, Cable Bus, Wire Mesh Cable Trays , MP

MP Husky manufacturers Cable Tray Systems, Cable Bus System, Wire Mesh/Wire,Cable Tray, & Cable Management Systems. Our cable support



Contact Us

For datasheets, pricing, or custom telecom energy solutions, please visit:
<https://www.koskolong.co.za>