



Adam Tas Corridor Energy

Cable tray modification with downward bend





Overview

This guide explains how to make 90° bends, vertical bends, tees, and offsets in wire mesh cable trays safely and professionally. Cable ladder systems and cable tray systems shall be manufactured in accordance with BS EN 61537, channel support. Since the jaws of the bolt cutter drags a layer of zinc across the cut end and forms a protective layer. You can buy a manufactured 90 degree bend or make one on a cable tray bending machine but in this video I show you h. Is your cable tray system optimized for safety, dependability, space and cost savings?

Cable tray (or cable ladder) systems are a popular alternative to electrical conduit systems, as they have an outstanding record for dependable service, design flexibility and cost savings in commercial and. Ya I reduced down dropped cables off at a heat trace controller and carried the tray on with less cables Nice fab work, I don't know the details either but it looks well executed.



Cable tray modification with downward bend

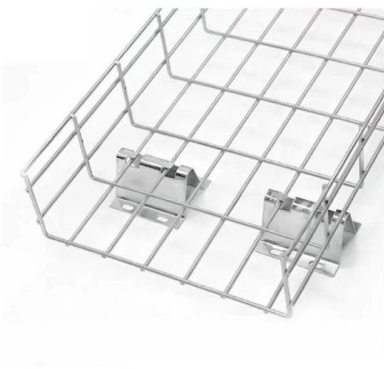
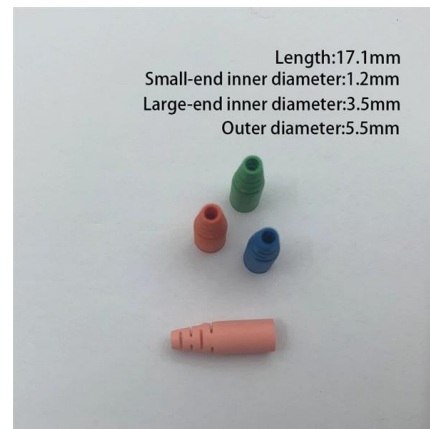


Bending Cable Tray

You can buy a manufactured 90 degree bend or make one on a cable tray bending machine but in this video I show you how to make one using a metal bar.

Bending Cable Tray

Students trading aid on how best to put an internal 90 degrees bend in steel cable tray. Includes a full demonstration on how bend steel cable tray using a crimping to. You can buy a manufactured



Best Practice Guide to Cable Ladder and Cable Tray Systems

This guide covers cable ladder systems, cable tray systems, channel support systems and associated supports intended for the support and accommodation of cables and possibly other electrical

HOW TO BEND 90 DEGREE OF CABLE TRAY SUPPORT TO SUPPORT BASIC TUTORIAL

In the electrical wiring of buildings, a cable tray



system is used to support insulated electrical cables used for power distribution, control, and communication.



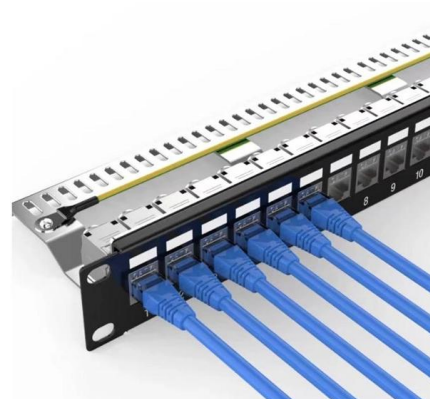
Aveva E3d

In this video I'm sharing how we can Align Bend / Riser correctly during Cable Tray Modification in Aveva E3d. #cabletray #e3d #avevae3d #learne3d #oilandgas



How to Make an Internal Bend in Steel Cable Tray Using a

You can buy a manufactured 90 degree bend or make one on a cable tray bending machine but in this video I show you how to make one using a metal bar.



B-Line series Cable Tray Design Considerations

Our wind certification report provides you with list of acceptable B-Line series cable tray supports, fittings and covers based off of the environmental conditions, cable loading, and type of cable tray in your



Ladder Type Cable Tray Vertical Inside Bend

A ladder type cable tray vertical inside bend is a fitting used to redirect cables vertically downward within a ladder cable tray system, typically at a 90-degree angle. This accessory is ideal for managing cable



Assembly Guide

The assembly guide below will help the cable tray installer make the bends and others without difficulty even he had never installed wire mesh cable trays before.

Cable Tray Design and Components Guide

This document provides information about cable trays and accessories, including straight cable trays, perforated trays, returned edge and flange types, and bent



How to Bend Cable Tray Students trading aid on how best to put an

Includes a full demonstration on how bend steel cable tray using a bending machine. This is a step by set guide on how to make (fabricate) a 90 degree bend in metal cable tray and use



Assembly Guide

When a wire cable tray is cut, the fact that a wire has been cut does not affect the level of protection. Let alone we have rubber caps to protect the cut ends. The assembly guide below will help the cable tray



Cable Tray Technical Guide A practical guide to product selection and

Cable tray installed in a hazardous location must contain only those cables that are appropriate for this type of environment as defined in Chapter 5 of the NEC.

CableTray Book English db

Aluminum Cable trays fabricated of extruded aluminum are often used for their high strength-to-weight ratio, superior resistance to certain corrosive environments and ease of installation. They also offer



Cable Tray side bend (45),, how to make side bend of Cable Tray

16.6K subscribers Subscribed 954 41K views 5 years ago #Electrical_wiring #Trunking_Modification #Cable_Ladar_modification



Cable Tray Bend , Information by Electrical Professionals for

There is no minimum radius bend for cabletray or low voltage conductors that I'm aware of in the NEC, unless the specific manufacturer establishes a minimum. NEC 392.18 (A) states that



Ladder Type Cable Tray Vertical Outside Bend

A ladder type cable tray vertical outside bend is a fitting used to change the direction of cables vertically, typically at a 90-degree angle, but in the opposite direction

Exploring the Different Bending Types for Wire Mesh

Wire mesh cable trays have become a vital component in modern electrical installations, offering flexibility, durability, and easy customization for



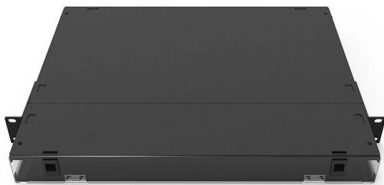


Cable tray modification : r/electricians

Every benderpre-made 90 or 45 degree bend is made with the minimum bend raduis of cables and wire taken into consideration. That's why you supposed to use

Cable Tray Bend and Offset Formulas

The document discusses Metstrut cable tray systems, including their configuration, materials, dimensions, and compliance with industry standards. Key points: -



Make a 90 Bend in Electrical Cable Tray

The Easy Guide to How to make a 90 electrical cable tray bend to measurement of your choice. Great if you are new or just forgot how to do it, this easy

B-Line series Cable Tray Design Considerations

As an industry leader in cable tray, Eaton offers one of the widest ranges of cable management solutions available in the market today with its B-Line series portfolio. With unmatched quality and service, we

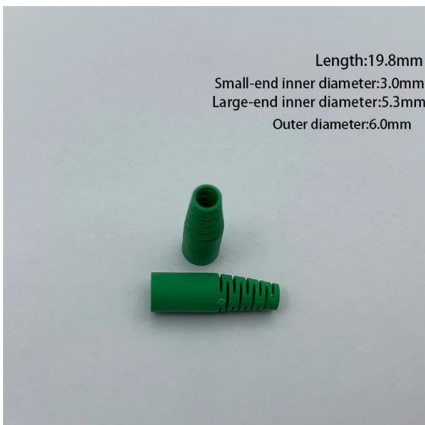


CABLE TRAY SYSTEMS GUIDE

The Ladder Tray features light, rugged, tubular steel construction. It is designed for mechanical support and strain relief in long runs of cable and creates a smooth gradual bend for cable. Rail and stringer

90 degree bend in 102mm cable tray

Enjoy the videos and music you love, upload original content, and share it all with friends, family, and the world on .



Cable trays bend for on-the-job retrofits , Cabling Installation

So, if cable trays are meant to simply support the weight of cable through a space, why differ from the traditional, two-sided, ladder-type system? The answer lies in the variety of installation challenges



How to Create Bends in Wire Mesh Cable Trays (Step-by-Step Guide)

Creating bends in wire mesh cable trays is simple, fast, and cost-effective when done correctly. With proper cutting and bending techniques, you can achieve professional cable routing without additional



Contact Us

For datasheets, pricing, or custom telecom energy solutions, please visit:
<https://www.koskolong.co.za>