



Adam Tas Corridor Energy

Cable tray parallel to vertical





Overview

In general, cable trays run in parallel to building walls and electrical panels. maintain spacing or to keep cables in place when the tray is ect the minimum bend ra-dius for cables as they exit the bottom of the cable tray. A rung spacing of 6 to 9 inches (150 to 230 mm) is preferable when the cable tray cont d for instrumentation and control applications that require. Proper installation can significantly reduce electromagnetic interference, prevent fire hazards, and improve overall efficiency. Most of them tend to be some sort of vertical rail with hooks attached in which the cable hangs. Hubbell's NEXTFRAME® Ladder Tray is the effective and widely used cable runway that supports and delivers bundles of cable between cabinets, racks, and closets, along walls, and suspended from ceilings.



Cable tray parallel to vertical



Cable Tray Technical Guide A practical guide to product selection and

Cable tray installed in a hazardous location must contain only those cables that are appropriate for this type of environment as defined in Chapter 5 of the NEC.

GENERAL INFORMATION

In vertical installations, the weight of the suspended cable creates a tensile load on itself and is the factor, from a cable perspective, that limits the height of vertical installation for a tight buffer cable.



Cable tray installation requirements- ZM Technology Co., Ltd.

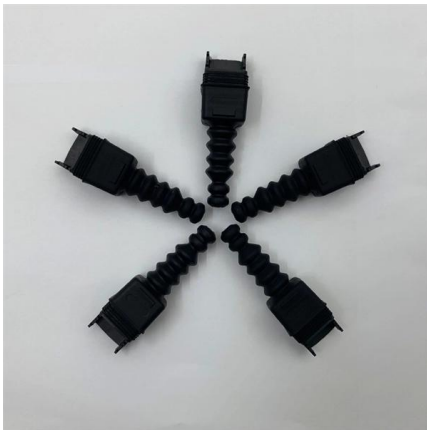
As a supporting project of the wiring project, the cable tray has no special normative guidance, and the specifications and forms of various manufacturers lack universality.

Vertical & Overhead Installation of Cable Trays and Wire Mesh

Yes, wire mesh baskets and cable trays can be installed vertically or overhead, and they



absolutely should be in many cabling projects. Whether routing Cat 6 cables in a tight riser space or



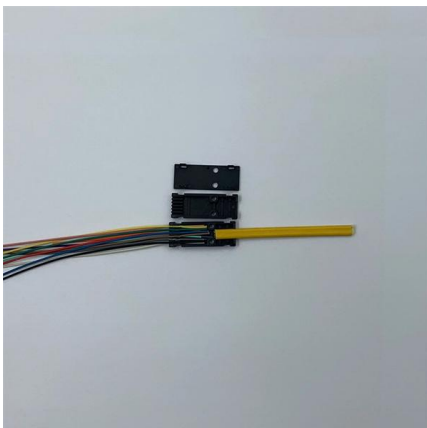
Typical Design Philosophy of Cable Trays for Power

The trays shall be strong enough to keep the deflection of the fully loaded tray within permissible limits. In general, cable trays run in parallel to building walls and

Verticals Cable Tray Management Solutions , Cable

Hutaib Electricals, a trusted cable tray manufacturer in India, offers vertical cable management solutions for high-rise buildings. Their basket cable trays and wire

LoRawan outdoor base station



Cable Tray Fill Rules (NEC 392)

Cable Tray Fill and Installation per NEC 392 Cable tray types, fill rules for single-conductor and multiconductor cables, ampacity derating, separation



Guide to cable support systems

A cable support system consists of cable support lengths and system components, such as cable support fittings, support elements, mounting elements and system accessories. The cable support



WBT - nVent Wire Basket Tray

The construction of the nVent Wire Basket Tray shaped tray eliminates stress and pressure point on today's high speed/performance cabling media. Minimally 400% increased support, and cable strain

How to create vertical cable tray in Revit

How to create a vertical cable tray in Revit to match the one shown in the image: This can be done with the free Revit MEP Fabrication extension. Use



Annex I

If two cables belonging to incompatible families (for the definition of families, refer to ITER EDH Electromagnetic Compatibility) have to share the same cable tray, a metal vertical cable tray divider



Cable Tray Technical Guide A practical guide to product selection and

Cable Tray Technical Guide A practical guide to product selection and installation This guide for engineers and installers has been developed by ABB as a practical reference regarding cable tray



Best Practice Guide to Cable Ladder and Cable Tray Systems

This guide covers cable ladder systems, cable tray systems, channel support systems and associated supports intended for the support and accommodation of cables and possibly other electrical



Cable Trays Installed Vertical In A Different Manner , Eng-Tips

Cable side rails provide the support for the cable tray. They are designed as I-beams, channels or extruded shapes to support the weight in the "normal" vertical direction.





CABLE TRAY SYSTEMS GUIDE

Hubbell's NEXTFRAME® Ladder Tray is the effective and widely used cable runway that supports and delivers bundles of cable between cabinets, racks, and closets, along walls, and suspended from

Core Principles for Electrical and Instrumentation Cable

Spacing Standards: Electrical (power) and instrumentation (signal/control) cable trays should maintain a minimum vertical and horizontal distance. Industry



Types of Cable Trays - Advantages, Applications and Sizes

Explore the types of cable trays, their advantages, applications, and standard sizes. Learn how they improve cable management and support various industries.

A Guide to Cable Tray Accessories and Their Functions

Explore a detailed guide to cable tray accessories and understand their uses in ensuring safety, stability, and efficiency in electrical system



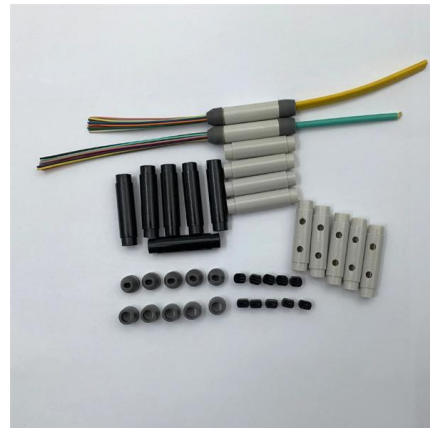
What is a Vertical Cable Tray?

What is a vertical cable tray? This guide explains its types (ladder, solid-bottom), benefits for safety & organization, and key applications in data



Typical Design Philosophy of Cable Trays for Power

In general, cable trays run in parallel to building walls and electrical panels. Vertical distance between adjacent cable trays, measured from the bottom of upper tray



Vertical Straight Cable Tray Support Spacing , Eng-Tips

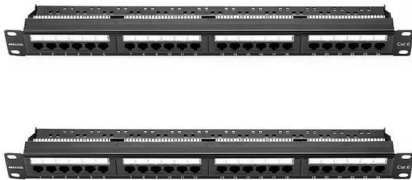
In vertical trays, cables shall also be secured at intermediate locations as necessary to keep all cables completely within and secured to the tray." So, it is no indication what could be the





Cable Tray Spacing Standards for Installation and Safety

Discover the essential cable tray spacing requirements for safe and efficient installation. Learn key standards, horizontal and vertical spacing, and more.



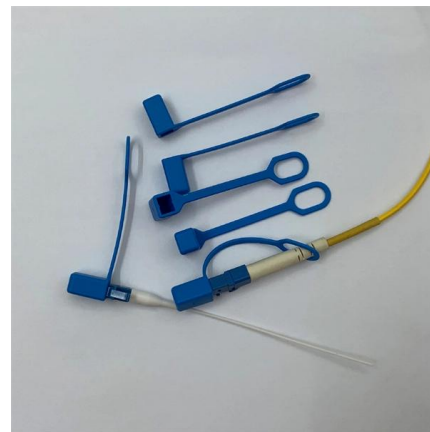
Precautions for Cable Tray Installation

We have summarized the precautions for cable tray installation to help customers quickly and correctly install cable trays.



How to Install Cable Tray: A Comprehensive Guide to Different Cable

Welcome to our step-by-step guide on installing cable trays! In this video, we'll explore the different types of cable trays available and provide detailed instructions for their installation.



Cable Tray Spacing Standards for Installation and Safety

Key Factors Impacting Cable Tray Spacing
Understanding cable tray spacing is key to meeting safety regulations and maintaining system



Cable tray manual

Instead of large conduits, cable channel may be used very effectively to support cable drops from the cable tray run to the equipment or device being serviced and is ideal for cable tray runs involving a



Guide to cable support systems

Four different mesh cable tray types are available, depending on the requirements, area of application and cable quantity. The innovative Magic connection system of the GRM and G-GRM mesh cable



Contact Us

For datasheets, pricing, or custom telecom energy solutions, please visit:
<https://www.koskolong.co.za>