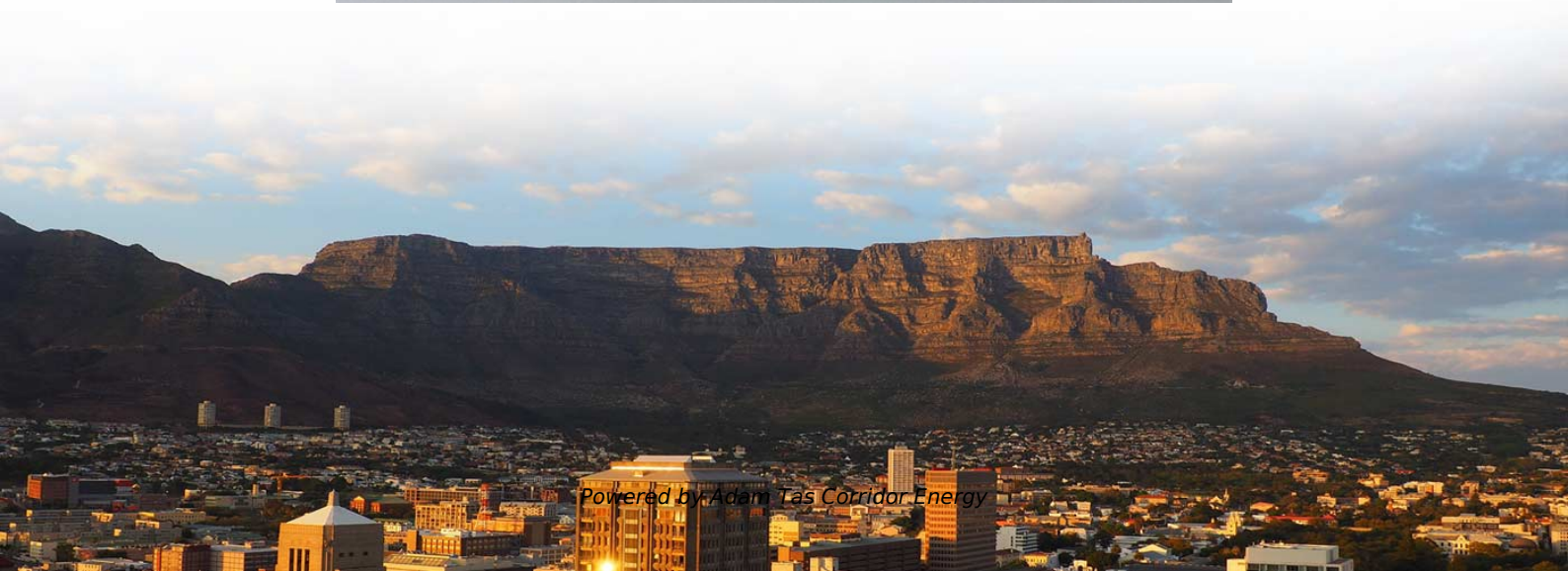
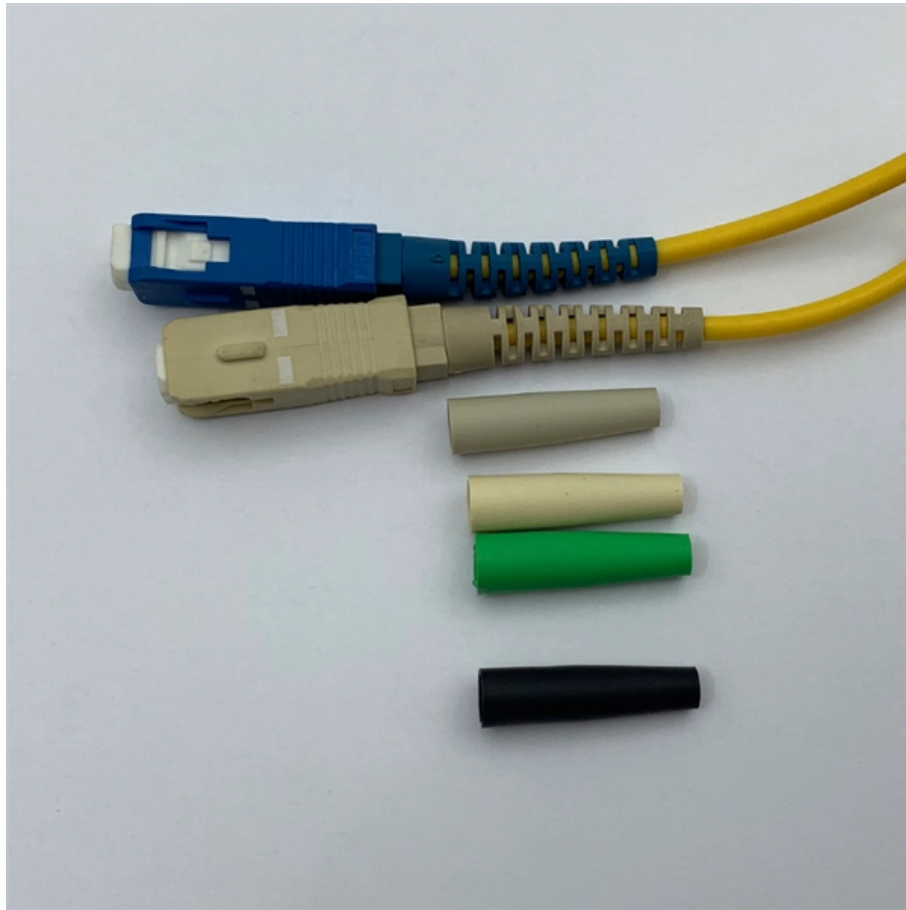




**Adam Tas Corridor Energy**

# **Cable tray seismic support factory site**





## Cable tray seismic support factory site

---



### Westinghouse AP1000 Design Control Document Rev. 19

This appendix provides the design criteria for seismic Category I cable trays and their supports. Seismic Category II cable trays and their supports are also designed utilizing the design criteria of this appendix.

### Seismic design and qualification of cable trays in nuclear power plants

Cable trays are light equipment components. They consist of steel ladder type cable trays and a support system. In case of horizontal cable trays, the trays are supported by cantilevers



### Seismic Supports

Seismic Supports Cable trays are systems used for the safe transportation and protection of electrical cables, designed to fit the pathways within buildings and

### Test-based approach to cable tray support system analysis and

Nuclear power plant safety-related cable tray support systems subjected to seismic loadings



were originally understood and designed to behave as linear elastic systems. This



### **Seismic Supports-Guangdong Tianlai Steel Conduit & Cable Tray Co.,**

Guangdong Tianlai Steel Pipe Cable Tray Co., Ltd. has customized and developed a cable tray solution suitable for the Guangzhou Tower scene in response to the demands of super high-rise landmarks.



### **E-Line Seismic**

EAE Seismic Support Systems offer rigid solutions for installations that require earthquake protection. The seismic supports, which can be utilized in any type of



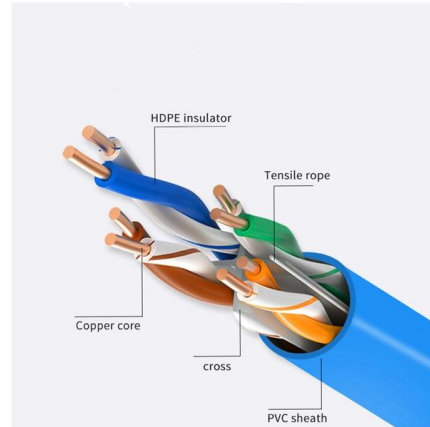
### **Rev 7 to Procedure SAG.CP3, "Seismic Design Criteria for Cable Tray**

A cable tray hanger is classified as a \_ seismic Category I structure, and therefore, it shall be adequately designed for the effect of the postulated seismic event combined with other applicable and'



## What are the seismic design considerations for cable trays?

Engineers typically use seismic design codes and standards to determine the appropriate design parameters for cable trays based on the seismic hazard level



## Cable Tray and Conduit System Seismic Evaluation Guidelines

Guidelines are presented here for conducting in-plant seismic ruggedness review of conduit, cable trays, and their support systems. The in-plant review has two purposes.

## Seismic Bracing Kit , Seismic Bracing , Wire and Cable Hangers , Wire

Cablofil Wiremesh Cable Tray concept based upon performance, safety and economy; three qualities which make Cablofil Wiremesh Cable Tray system preferred by installers. Cablofil adapts to the most



## Vogle Electric Generating Plant (VEGP) Units 3 and 4 Updated

Cable Trays and Cable Tray Supports This appendix provides the design criteria for seismic Category I cable trays and their supports. Seismic Category II cable trays and their supports are also designed



## Understanding the Seismic Resistance of Cable Trays

This article discusses the importance of seismic resistance for cable trays, detailing when seismic braces are necessary, the factors that affect seismic



## Cable Trays Seismic Design: Protecting Power in Quake

Learn how I approach Cable Trays Seismic Design to protect power and data in earthquake-prone areas. Understand key principles, methods, and

## A Method for Seismic Qualification of Cable Tray Systems in Nuclear

This paper presents an approach to seismically qualify cable tray systems in nuclear power plants. The approach allows the use of standard tray and support designs by giving realistic consideration to the



## Cable tray bracket

Types of Cable Tray Brackets A cable tray bracket is a vital structural component in electrical installations, providing secure support for cable trays that carry power, control, and communication



### Evaluation of cable tray and conduit systems using the seismic

A method is developed for utilizing this data in defensible, simple seismic qualification criteria and configuration controls. Qualitative comparisons are used to demonstrate the applicability



### Engineer certified designs and site inspections

Engineer certified designs and site inspections 1170.4. Our one-stop solution for seismic bracing, cable tray, pipe hangers, strut systems and fasteners takes the guesswork out of your nex



### Study on the Seismic Response of Cable Tray Considering Sliding Motion

In various industrial plants such as thermal power plants, nuclear power plants, and chemical plants, many cable trays are generally used to support cables for control signals. Cable





## Engineer certified designs and site inspections

Engineer certified designs and site inspections  
Ezystrut offers a range of seismic solutions that comply with Australian Standard AS1170.4. Our one-stop solution for seismic bracing, cable tray, pipe

## Performance-based optimum seismic design of cable tray system

The results show that the proposed performance index (drift ratio between adjacent supports) for cable tray systems is a reasonable criterion for performance-based seismic design and

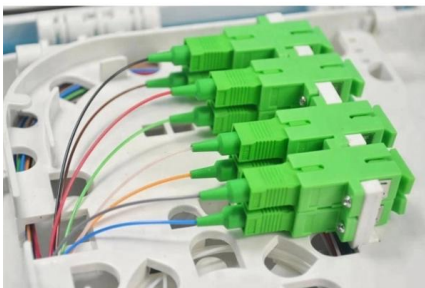
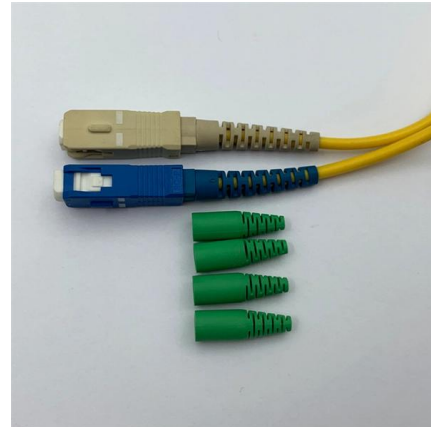


## Evaluation of cable tray and conduit systems using the

A method is developed for utilizing this data in defensible, simple seismic qualification criteria and configuration controls. Qualitative comparisons are used

## Installing Seismic Restraints for Electrical Equipment

Raceways/Conduits/Cable Trays: Covers the different ways to install raceways, conduits, and cable trays. Attachment Types: Gives instructions on installing equipment in different arrangements known



## Appendix 3F Cable Trays and Cable Tray Supports

This appendix provides the design criteria for seismic Category I cable trays and their supports. Seismic Category II cable trays and their supports are also designed utilizing the design criteria of this appendix.

## Cable Tray Checklist for High-Seismicity Projects

When those elements are coordinated early, cable tray systems can perform far more reliably under earthquake demands. Planning a project in a high-seismicity region? Contact our team



## Contact Us

---

For datasheets, pricing, or custom telecom energy solutions, please visit:  
<https://www.koskolong.co.za>