



**Adam Tas Corridor Energy**

# **Cable tray sleeve elbow dimensions**





## Cable tray sleeve elbow dimensions

---

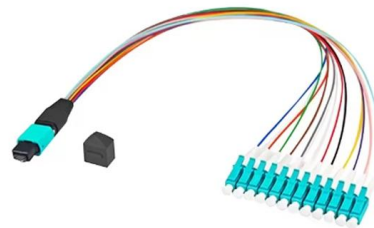
### Cable Tray Design and Components Guide



This document provides information about cable trays and accessories, including straight cable trays, perforated trays, returned edge and flange types, and bent

### STANDARD PERFORATED CABLE TRAY

Coupler Plate Used to join two cable trays in a straight line, ensuring proper alignment and structural continuity.



### Cable Tray

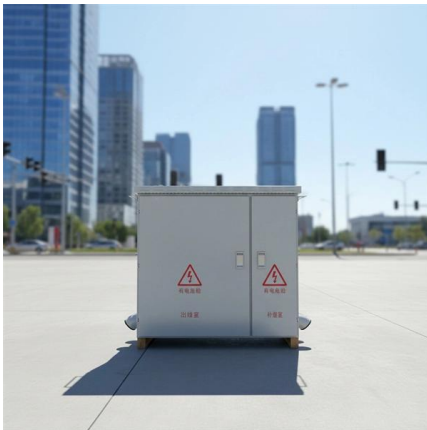
Cable Ladders Straight sections of ladder type cable trays consist of two longitudinal side rails, connected by individual transverse members, or rungs, which are welded to the side rails or bolted in

### Cable Tray and Trunking Overview , PDF , Length

The document discusses different types of cable containment systems including cable trays, cable



ladders, and cable trunking. It provides details on the



## Cable Tray Technical Guide A practical guide to product selection and

In designing supports for a cable tray system, consideration should be given to the loads associated with future cable additions and any additional loading that may be applied to the cable tray system (e.g.,

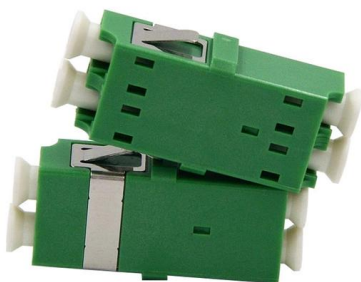
### Contents sre cable tray , PDF

The document describes the various types, components, and specifications of cable tray systems manufactured by SR Electrical Co. It includes ladder cable trays,



### Cable Tray Dimensions Guide: Standard Sizes, Tray

Standard Cable Tray Dimensions Cable tray dimensions are not chosen at random. Across most global markets, they follow well-established





## CABLE TRAY, CABLE LADDER, CABLE TRUNKING CATALOGUE

Fitting and accessories. Fittings are accessories that connect this cable tray to another cable tray to change direction with the same or different width of the cable run. All fittings are available in sizes



## LADDER CABLE TRAY SYSTEM 90° Vertical Elbow Outside

LADDER CABLE TRAY SYSTEM 90° Vertical Elbow Outside & Inside OUTSIDE (90) INSIDE (9I) CSA Certified for CSA Systems 90°



## 90 Degree Horizontal Elbows Catalog , PDF , Dimension

The document provides specifications for metallic cable tray elbows and fittings, including catalog numbers, dimensions, and fitting series. It details the standard

### DETAILS DISPLAY

Focus On Every Detail



01

Neat & Clean Layout

Cleaner arrangement of components. Easy to operate

## CABLE TRAY SYSTEMS GUIDE

Some applications may require the cable tray to support the weight of a single, dead object in addition to the cable loads. Specifications typically require this to be applied at the midpoint of the span between



## Cable Tray Size and Dimensions: How to Choose the

Learn how to calculate the perfect cable tray size and dimensions for your electrical project. This guide covers load capacity, fill ratios, and industry



Integrated Aluminum Alloy  
Die Casting

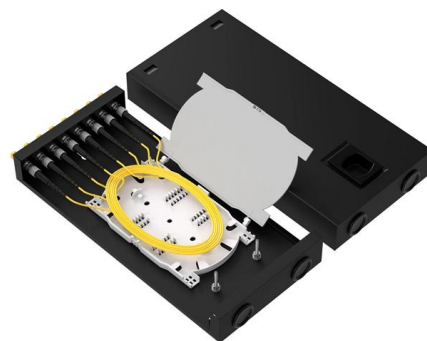


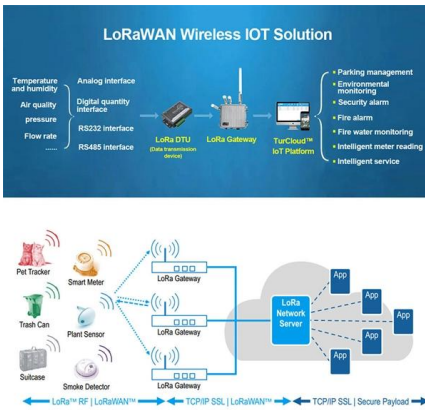
## TECHNICAL AND SIZING DATA

When vertically stacking ladder trays always maintain adequate clearance above each tray run to allow for the installation of the cable and start with the narrowest (lightest) tray on top and work downwards

## Channel tray

T& B channel tray systems are fabricated from a corrosion-resistant metal (low-carbon steel, stainless steel or an aluminum alloy) or from a metal with a corrosion-resistant finish (zinc or epoxy). The





## Cable Tray Dimensions Guide: Standard Sizes, Tray

Explore standard sizes by tray type, understand width and depth limits, and see how to calculate and choose compliant cable tray sizes for real projects.

## TECHNICAL AND SIZING DATA

The cable ampacity installed in solid tray will be similar to cable installed without spacing in accordance with CEC Rule 12-1210 (3). Solid tray will carry the same type of conductors as ventilated trays.



## Cable Tray Technical Guide A practical guide to product selection and

A practical guide to product selection and installation This guide for engineers and installers has been developed by ABB as a practical reference regarding cable tray characteristics, installation, and

## SWIFTS CABLE TRAY

Designed to integrate with the existing Swifts cable tray system, Swiftclip can be used with medium (MRF and heavy duty (SRF) in 50 to 300mm widths. The entire system offers excellent earth





## LEGRAND CABLE TRAYS TECHNICAL GUIDE

Not all cable trays are equivalent. The mechanical and electrical characteristics, tests, certifications, overall quality management, recommendations mentioned in this technical guide only apply to our

## CABLE TRAY, CABLE LADDER, CABLE TRUNKING CATALOGUE

Fitting and accessories, with the same or different width of the cable run. All fittings are available in sizes and types corresponding to the straight cable tray sections. These fittings include: elbow,



## 90° Vertical Elbow , Cable Tray Systems , PUPCO

Discover our 90° Vertical Elbow for cable tray systems. Contact us today for availability and receive a quote. Fast shipping guaranteed



## B-Line series Cable Tray Design Considerations

As an industry leader in cable tray, Eaton offers one of the widest ranges of cable management solutions available in the market today with its B-Line series portfolio. With unmatched quality and service, we





## Full cable tray systems specification document

A. Submittal Drawings: Submit drawings of cable tray and accessories including clamps, brackets, hanger rods, splice plate connectors, expansion joint assemblies, and fittings, showing accurately



### SWIFTS CABLE TRAY

Swifts cable tray and ladder ranges have been designed and manufactured in Scarborough (UK) since the 1960's. Our inhouse galvanising facility and strict quality control guidelines ensure that every



### Vertical Cable Support Elbow , Ladder Trays , Cable Tray and Reels

The aluminum I-beam design of ITray is perfect for industrial installations with large diameter cables in long span situations, minimizing total tray width and creating a smooth transition between straight



### CABLE LADDER SYSTEM

Cable Ladder Specifications: A. CABLE TRAY DESIGN Cable Tray shall be made of straight sections, fittings and accessories as defined in the latest NEMA standards per NEMA VE-1. Standard cable



## Full cable tray systems specification document

B. Cable tray systems are defined to include, but are not limited to straight sections of [ladder type] [trough type] [solid bottom type] [channel type] cable trays, bends, tees, elbows, drop-outs, supports

## Contact Us

---

For datasheets, pricing, or custom telecom energy solutions, please visit:  
<https://www.koskolong.co.za>