



Cable tray support fabrication dimensions

Pre-Terminated Patch Panel



Standard 19" width



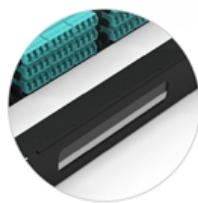
Max 144 fibers in 1U



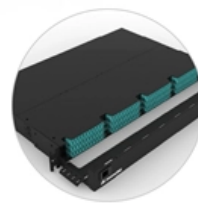
MPO/Fusion Dual-Purpose



Removable Cable Management Tray



Transparent Front Cover



High-Quality Matte Coated Steel





of materials to suit your needs.



B-Line series Cable Tray Design Considerations

Our wind certification report provides you with list of acceptable B-Line series cable tray supports, fittings and covers based off of the environmental conditions, cable loading, and type of cable tray in your

Full cable tray systems specification document

B. Cable tray systems are defined to include, but are not limited to straight sections of [ladder type] [trough type] [solid bottom type] [channel type] cable trays, bends, tees, elbows, drop-outs, supports



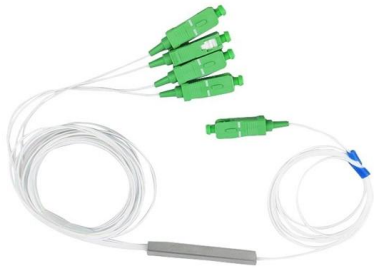
Ethiopia Cable Tray Design Details , PDF

The document contains engineering drawings for: 1) A ladder type cable tray system with general notes specifying materials, finishes, and dimensions. 2) A hold down



Cable Tray Design and Standards Guide

2. Design and construction requirements specify that cable trays must be ladder or perforated type depending on cable, fabricated from hot rolled steel sheet. Tray



Cable Tray Installation Best Practices for Ugandan Industrial

AI SUMMARY This guide by Build Matt Ltd. covers step-by-step cable tray installation practices tailored to Uganda's industrial warehouses. It explains how to select the right cable tray

Cable Tray Size and Dimensions: How to Choose the

Learn how to calculate the perfect cable tray size and dimensions for your electrical project. This guide covers load capacity, fill ratios, and industry



CABLE TRAY

Cable Support Systems are well designed to provide necessary support for cable trays, cable ladders and trunkings. Cable supports are manufactured according to common standards from high quality

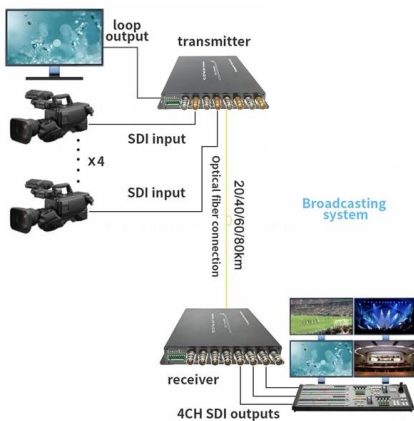


Cable Tray Technical Guide A practical guide to product selection and

SOLID-BOTTOM CABLE TRAY Providing additional cable protection, solid-bottom cable tray is sometimes preferred to support and protect numerous small instrumentation and control cables.

LEGRAND CABLE TRAYS TECHNICAL GUIDE

Not all cable trays are equivalent. The mechanical and electrical characteristics, tests, certifications, overall quality management, recommendations mentioned in this technical guide only apply to our



Technical Specification for Cable tray installation and cable laying work

Scope :- This specification covers the following major activities; - Fabrication and installation of Mild Steel (MS) support structure for Galvanized Iron (GI) Cable tray.

Cable Tray Installation Details , PDF , Hvac , Machines

This document contains reference information for typical cable tray support details, including cable tray data sheets, cable lists, and HVAC system specifications for



Guide to cable support systems

The load capacity of the cable trays according to the support width can be read off in the diagram using load curves - here, shown as an example for a cable tray with the tray widths 100 to 600 mm.



B-Line series Cable Tray Design Considerations

As an industry leader in cable tray, Eaton offers one of the widest ranges of cable management solutions available in the market today with its B-Line series portfolio. With unmatched quality and service, we



Cable Tray Dimensions Guide: Standard Sizes, Tray

Standard Cable Tray Dimensions Cable tray dimensions are not chosen at random. Across most global markets, they follow well-established





26 05 36 Cable Trays for Electrical Systems

Install cable tray as a complete system, including fasteners, hold-down clips, support systems, barrier strips, adjustable horizontal and vertical splice plates, elbows, reducers, tees, crosses, cable



CABLE TRAY SYSTEMS GUIDE

The design and cost of the cable tray is greatly affected by this designation. In order to determine the most appropriate and economical system, a class should be selected that reflects the actual total

Ladder Type Cable Tray Drawings

Cable tray & tray support drawings.pdf - Free download as PDF File (.pdf), Text File (.txt) or view presentation slides online. This document contains engineering



TECHNICAL AND SIZING DATA

Small diameter flexible cables i.e. control cables (require continuous bearing support) - use ventilated or solid tray. Large diameter more rigid cable i.e. telephone/control cables - use ladder tray. Rung



Cable Tray Dimensions Guide: Standard Sizes, Tray

Explore standard sizes by tray type, understand width and depth limits, and see how to calculate and choose compliant cable tray sizes for real projects.

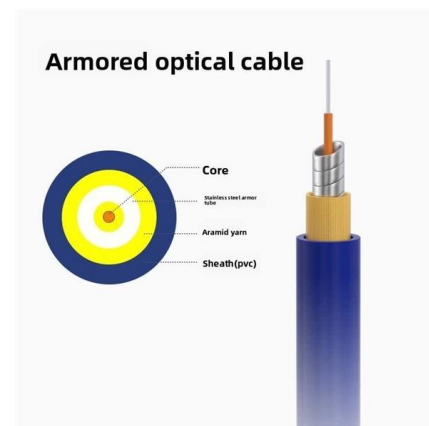


Cable Tray Size Chart and Selection Guide

Selecting the appropriate electrical cable tray dimensions is a critical decision that directly impacts the safety, efficiency, and longevity of any industrial or commercial electrical installation.

Cable tray

In the electrical wiring of buildings, a cable tray system is used to support insulated electrical cables used for power distribution, control, and communication. Cable



Contact Us

For datasheets, pricing, or custom telecom energy solutions, please visit:
<https://www.koskolong.co.za>