



Adam Tas Corridor Energy

Cable tray supports are usually grounded with round steel





Cable tray supports are usually grounded with round steel



(B) Steel or Aluminum Cable Tray Systems

Steel and aluminum cable tray systems can serve as equipment grounding conductors if specific criteria are met. These include proper identification of the trays, adherence to minimum cross-sectional area

Grounding Inspection of Steel and Aluminum Cable Tray Systems

The grounding of cable tray systems, including the cables in the tray systems must be inspected for compliance with the grounding requirements in the NEC.



Cable Tray SHIB NAL

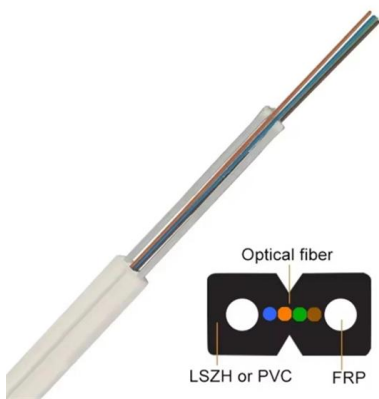
Cable trays are not raceways, but they are treated as a structural component of a facility's electrical system. Cable trays are a part of a planned cable management system to support, route, protect and

FactSheet

Cable trays feature flexibility unmatched by conduit, as cables are easier to mark, remove and find in cable trays. Cable trays are available



in a number of different configurations, including ladder,

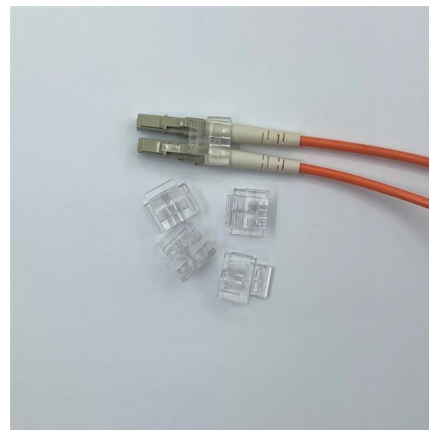


Cable Tray Grounding: Electrical and Non-Power Conductors

Cable tray systems that contain signal and communication circuits should be grounded and, in some situations shielded from external electrical and magnetic disturbances.

What Is A Cable Tray? 5 Types Of Cable Trays

A cable tray is a structural system used to support and manage electrical cables in various settings, such as industrial, commercial, and residential environments.



What Are Equipment Grounding Conductors (EGC) for

Due to this fact, the steel trays tend to be larger or thicker to manage the same power. Aluminum Trays: These are the kings of electricity transport.



Grounding Inspection of Steel and Aluminum Cable Tray Systems

Steel and aluminum cable tray systems are excellent equipment grounding conductors if they are properly designed, specified, installed, and inspected. The NEC requirements for cable tray



Beama Best Practice Guide , Installation Of The System , Cable

The following recommendations are intended to be a practical guide to ensure the safe and proper installation of cable ladder and cable tray systems and channel support and other support systems.

Guide to cable support systems

In addition, a cable support system can be used to separate and arrange cables in groups. The systems are installed on ceilings, walls or floors. The material of a cable support system is normally steel or



Guide to cable support systems

I support systems for cable support structures are used to bridge large loads and support spacings and to cre-ate complex section routes. The systems allow large sup-port spacings of wide span systems



NEC Article 392 Guide: Ensuring Compliance for Cable

To ensure that a cable tray is safe, all the bolts should be tight, and all the connections should also be clean. Without a properly bonded tray, the tray

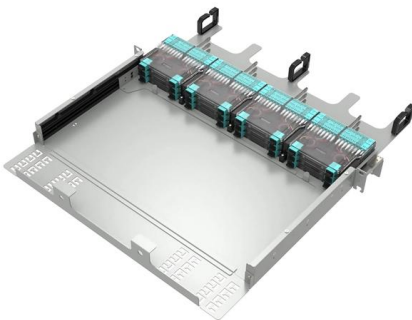
EFFICIENT FIELD TERMINATION



1. **PREPARE** - Strip and clean the fiber
2. **INSERT** - Fast and easy insertion
3. **LOCK** - Secure connection achieved

No Polishing | No Epoxy

Eliminates cable excess length and pigtail splice storage.
Designed for high-efficiency onsite installation.



Cable tray

In the electrical wiring of buildings, a cable tray system is used to support insulated electrical cables used for power distribution, control, and communication. Cable

Equipment Grounding Conductors for Cable Tray Systems

Cable tray wiring systems have excellent safety and dependability records. These excellent records are the result of cable tray's unique features plus the proper



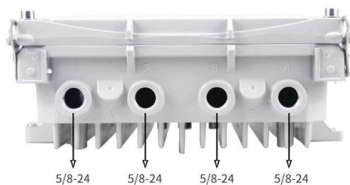


Grounding Requirements for Electrical Cables, Cable Trays, and

Copper stranded wire, galvanized flat steel, or metal components used to install supports along the cable trays can serve as the main grounding conductor. If the cable tray length is 30m or

Grounding Overhead Cable Tray Outdoors , Eng-Tips

The tray shall be bonded to building steel and earth, at least every 60 ft. This is only required when the cable tray system is not inherently bonded (connected) to building steel and earth



Cable Tray Support: Rod vs. Angle Steel

Learn about the different types of cable tray support, including rod supports and angle steel supports, and how to choose the right one for your

Equipment Grounding Conductors for Cable Tray Systems

Cable tray have excellent safety and dependability records, because of the result of cable tray's unique features plus the proper design and installation.



Cable Tray Technical Guide A practical guide to product selection and

Cable tray is considered to be a system. It must provide continuous support for cables, and the electrical continuity of the cable tray system must be maintained.



Grounding for Cable Trays , Information by Electrical Professionals for

If the cable tray is being supported by a strut rack and that rack is also supporting metal power circuit conduits, then I would deem it sufficiently bonded because of all the metal raceways



Cable Tray Grounding: Electrical and Non-Power Conductors

In most installations bonding to the facility ground network is achieved through the cable tray support structure. Steel trapeze or other steel supports securely clamp to the building steel



Grounding cable trays: requirements, norms, instructions

Although the trays are interconnected by means of bolts, due to which they have a continuous connection of the structure and some electrical conductivity, they must be connected with additional



Understanding Cable Tray Grounding: A

This comprehensive guide delves into the complexities of cable tray grounding, offering in-depth insights into its importance, principles, design

How to Properly Ground and Bond Structured Cabling Systems, CMW

The correct way to ground and bond a cabling system is to ensure all conductive components, such as cable trays, patch panels, racks, and metallic enclosures, are electrically



Contact Us

For datasheets, pricing, or custom telecom energy solutions, please visit:
<https://www.koskolong.co.za>