



**Adam Tas Corridor Energy**

# **Cable tray three-way right angle elbow**

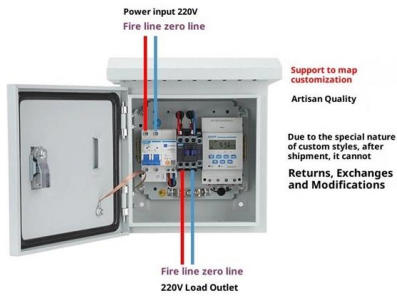




## Cable tray three-way right angle elbow

---

### Product Wiring Diagram



### Cable Tray Accessories Archives

We Offer Products that are used in parallel with cable trays including brackets, ground clamps and splices. Cable Tray Accessories The several Cable Tray fixtures available are:

### Cable Tray Orientation and Fittings

The first reason it does not work is that the cable tray MEPSystem property is null, so the connectors cannot be found. Instead, the cable tray element has its own



### Horizontal Elbow 90 degree, Angle Corner

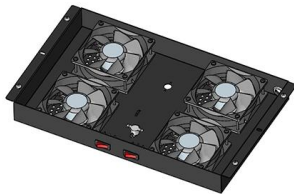
Horizontal Elbow 90 degrees is a product of bestray It belongs to the wire mesh cable tray product line We are committed to the quality of our products

### A Comprehensive Guide to Electrical Conduit Elbow (2024)

There are many types of electrical conduit elbows, each designed for specific applications,



and the elbows used in different countries could be little



### **SDTC Tech 1/2" 3 Way PVC Fitting Furniture Grade**

SDTC Tech 1/2" 3 Way PVC Fitting Furniture Grade Pipe Right Angle Three-Dimensional Elbow Connector for DIY PVC Shelf Garden Support Structure

## **CABLE TRAY SYSTEMS GUIDE**

Hubbell's NEXTFRAME® Ladder Tray is the effective and widely used cable runway that supports and delivers bundles of cable between cabinets, racks, and closets, along walls, and suspended from



### **CABLE TRAY, CABLE LADDER, CABLE TRUNKING CATALOGUE**

Fitting and accessories. with the same or different width of the cable run. All fittings are available in sizes and types corresponding to the straight cable tray sections. These fitting are including: elbow,





## Solved: Cable Tray Elbow

Solved: Good day, In need to create an elbow that starts at a right angle and that has the ability adopt the angle of the routing of the cable tray.



## Galvanized Steel Cable Tray Elbow and Horizontal Bending Fittings

We are a professional manufacturing and trading company of cable and cable support system. We currently sell domestically and export worldwide to places such as South East Asia, Africa, North

## Elbow 45° KKC

GRP-Elbow 45° for cable tray, with unperforated side rails, with moulded connector, various dimensions, glass fiber reinforced polyester, pressed, RAL 7032, pebble



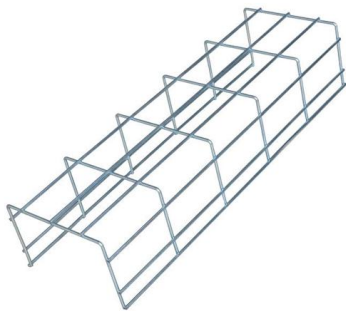
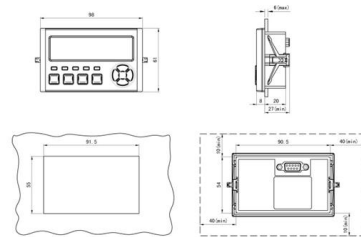
## Cable tray fittings and accessories

These fittings allow installers to navigate obstacles, elevation changes, and multi-level layouts without compromising cable safety. They are essential in industrial,



### 45° Vertical Elbow , Cable Tray Systems , PUPCO

Discover our 45° Vertical Elbow for cable tray systems. Seamlessly transition between sections and fittings, reducing tray width. Contact us today!



### CABLE TRAY SYSTEM

SUNWOO LADDER TYPE CABLE TRAY SYSTEM IS DESIGNED TO REDUCE OVERALL WEIGHT IN WEIGHT SENSITIVE ENVIRONMENTS WHILE INCREASING STRENGTH. IDEAL FOR

### LADDER CABLE TRAY SYSTEM 90° Vertical Elbow Outside

LADDER CABLE TRAY SYSTEM 90° Vertical Elbow Outside & Inside OUTSIDE (90) INSIDE (91) CSA Certified for CSA Systems 90°





## **Itray Aluminum Ladder Tray Elbow Horizontal Fittings**

Horizontal elbows provide directional transitions in cable tray systems, with 4"-7" rail heights, 6"-36" widths, and 12"-36" radii. Available in ladder and solid bottom aluminum designs.

## **Elbow for electrical supply cables , wire channels , trays , metal**

Metal elbows for cable trays are specialized components designed for electrical installations, allowing for efficient and safe routing of cable pathways at corners.



## **90° Horizontal Elbow , Cable Tray Systems , PUPCO**

The 90° Horizontal Elbow provides essential support and enables seamless cable management throughout your cable routing system. All fittings have 3" tangents



## **cable tray system**

A cable tray system is an assembly of metallic cable tray sections and accessories, that forms a rigid structural system to support cables.



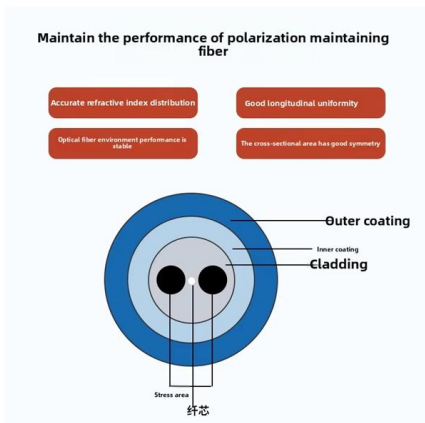
### Angular Ladder Type Cable Trays (ALTCT) , Patny Systems

Patny Systems offers a wide range of Angular Ladder Type Cable Trays that are lightweight, durable, and easy to install. Contact us today for a quote!



### Wire Mesh Cable Tray , Cable Tray Support

WM wire mesh cable trays are ideal for commercial and data center cable management, providing a flexible way to adjust your cable trays to suit your job site applications.



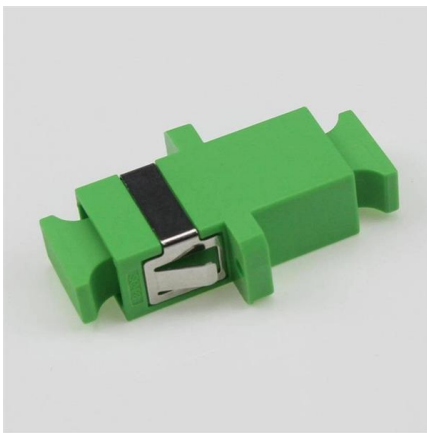
### Cable Tray Elbow 90 Degree

Yes, cable tray elbow 90 degree elbow can be deployed in hazardous environments with the right specifications. For areas with explosive atmospheres or chemical exposure, trays made of materials



## Horizontal Elbow 90 Degrees

horizontal elbow 90 degrees is a product of bestray It belongs to the cable tray product line We are committed to the quality of our products when



**5"**

Create a 45° or 90° downward angle in fiber cable trays with this elbow. Tool-free installation, flame-retardant PVC construction, and snap-on cover included.

## 90 degree cable tray elbow

A 90-degree cable tray elbow is a crucial component in electrical and data cabling systems, specifically engineered to enable smooth right-angle turns in cable routing.



## Cable Tray Accessories Archives

We Offer Products that are used in parallel with cable trays including brackets, ground clamps and splices. The several Cable Tray fixtures available are: an



可选配件



## Solved: Cable Tray Elbow

Good day, In need to create an elbow that starts at a right angle and that has the ability adopt the angle of the routing of the cable tray. We need to



## Contact Us

For datasheets, pricing, or custom telecom energy solutions, please visit:  
<https://www.koskolong.co.za>