



Adam Tas Corridor Energy

Cable trays and integrated support structures





Cable trays and integrated support structures



Cable Tray - Structured Cable Routing and Support System

A cable tray is a cabling infrastructure element used to route and organize cables. It supports and guides power, low-voltage, or fiber optic lines, ensuring structure, protection, and easier maintenance.

Modular Support Systems

Whether you're planning MEP installations such as pipe and cable tray supports, or access platforms and integrated floors for energy and industry projects, you'll only



Cable Tray Systems

EzyStrut offers some of the strongest cable trays in their classes, and produces them to a very high structural and visual standard. Cable trays offer continuous support of cables, are lightweight, quick

7 Types of Cable Trays: How to Choose the Right One

Cable tray systems are engineered support structures designed to route, support, and



protect insulated electrical cables used for power distribution,

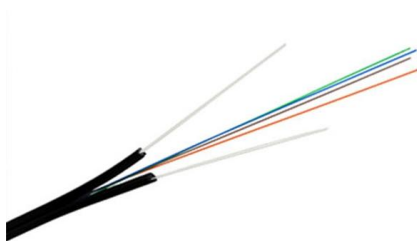


Cable Trays

Spina Group designs and manufactures a complete range of cable trays brackets, supports, and hardware components to ensure fast, safe, and durable installation

Cable Tray

With the RS 60 cable tray installation system, Niedax offers a standard support structure installation type that allows integrated circuit integrity maintenance.



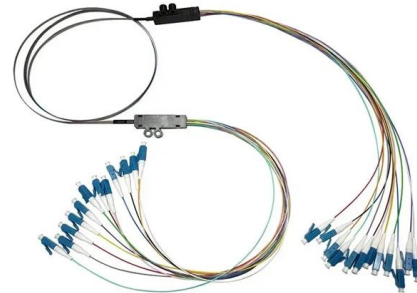
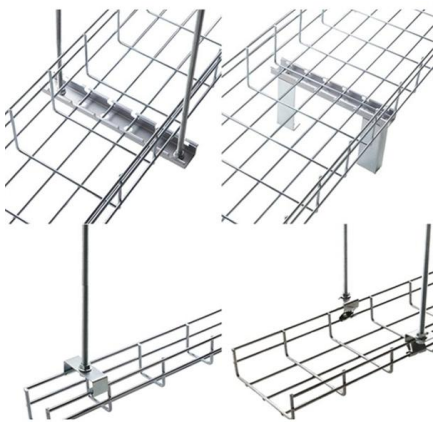
Best Practice Guide to Cable Ladder and Cable Tray Systems

Introduction This publication is intended as a practical guide for the proper and safe* installation of cable ladder systems, cable tray systems, channel support systems and associated supports.



Modular Support Systems

At Hilti we can help from the moment you start your design to the moment you install the final solution. Easy-to-design and simple to assemble, Hilti's MT System

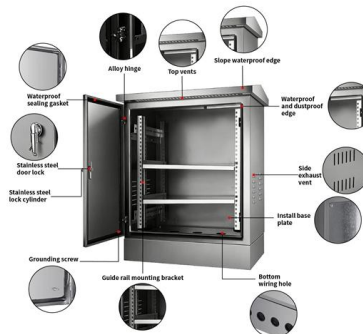


Substation Solutions

Our cost-saving, integrated solution for raised floors combines cabinet supports, panel stands, electrical tray and floor tile supports in one structure. Benefit from

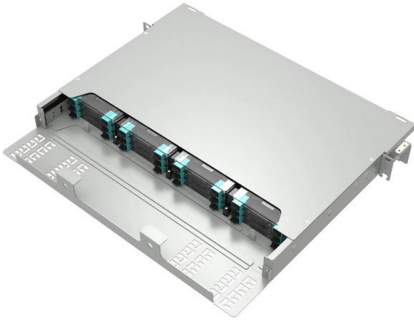
Best Practice Guide to Cable Ladder, Cable Tray

Associated supports Bespoke supports for cable tray and cable ladder other than BS 6946 channel supports Cable cleats Used within an electrical installation to



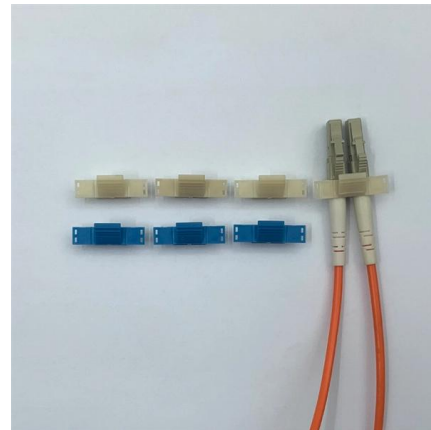
100+ Essential Questions Answered About Cable Trays:

Discover over 100 expert answers about cable trays, covering key topics like material selection, load capacity, installation methods, and maintenance.



Steel Cable Trays in Commercial Buildings: Balancing

Learn how to integrate steel cable trays in commercial spaces without compromising on aesthetics. Explore design tips for functionality, safety, and



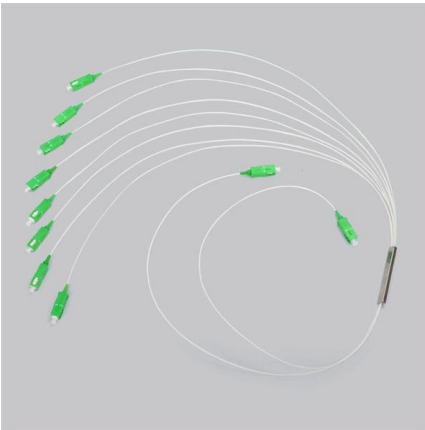
A Guide to Installing and Supporting Electrical Cable Trays

A professional guide to installing electrical cable tray systems per NEC Article 392. Covers support, securing cables, and fill calculations.

Eurostrut Cable Trays , cable tray, cable route and

Cable trays for industrial and marine use. Includes distribution trays, cable routes and NATO-type models. Request a quote directly via our webshop.



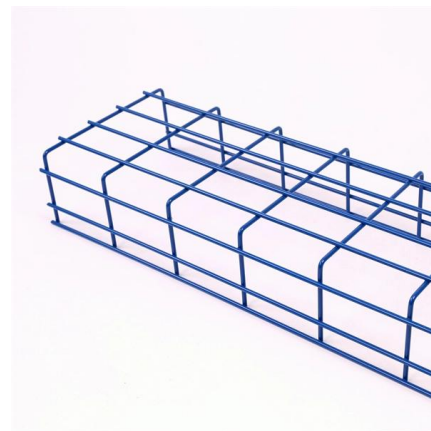


Can cable trays and strut systems be integrated into the same support

Yes. Strut framing can support both ladder and solid-bottom cable trays, offering a fully integrated system for cable management. This hybrid setup is commonly used in commercial

Raised Floor Solutions

All-in-one structure supports floor tiles, cabinets and cable trays - for easier adjustments and greater versatility . Channels and girders can



Best practice guide to cable ladder and cable tray

Cable ladder and cable tray systems The following recommendations are intended to be a practical guide to ensure the safe and proper installation of

Cable tray

In the electrical wiring of buildings, a cable tray system is used to support insulated electrical cables used for power distribution, control, and communication. Cable





Cable support system

The MKS and SKS cable tray systems from OBO Bet-termann have a long tradition. For 45 years, the ro-bust systems, which have been tested for various areas of application, have been successfully em

Cable Support Systems, steel

Wide Span Systems Wide span cable trays and ladders, fittings, barrier strip, covers, accessories
Wide Span Cable Trays Wide Span Cable Ladders Fittings Barrier Strips Covers System Accessories



Cable Tray

Cable Tray Cable trays are mechanical support systems that provide a rigid structural system for electrical cables, raceways, and insulated conductors used

Overview of support systems for cable and equipment

There are six major types of cable supports: cable runway, center-rail systems, cable tray, wire basket, bridle rings or cable hooks, and wireway. Each is designed for



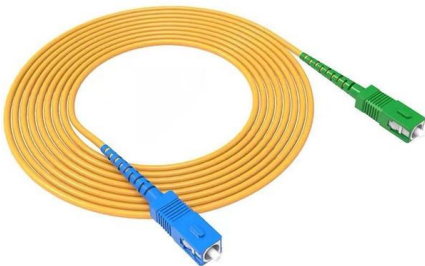


Cable Trays

Cable trays are systems that distribute bundles of insulated electrical cables from power supplies to electrical equipment, consisting of metallic trays supported from structures like walls and ceilings.

Cable Trays , PohlCon - Partner from start to future.

Cable trays are an integrated, highly flexible cable support system when used in combination with the matching support structures, covers and system-specific accessories.



Modular Supports Design Center

Easy-to-design and simple to assemble, Hilti's MT System offers an integrated solution with hardware, software, and services for mechanical, electrical, and

Cable trays

We offer a wide range of cable tray systems to support tubing, electrical cables and instrumentation. Our cable trays are produced in fit for purpose materials like



Decoding Cable Tray Support Structures: Tips and Insights

Discover efficient cable tray support structures for optimal cable management. Learn about hanger, wall-mounted, and Unistrut systems for safer

Contact Us

For datasheets, pricing, or custom telecom energy solutions, please visit:
<https://www.koskolong.co.za>